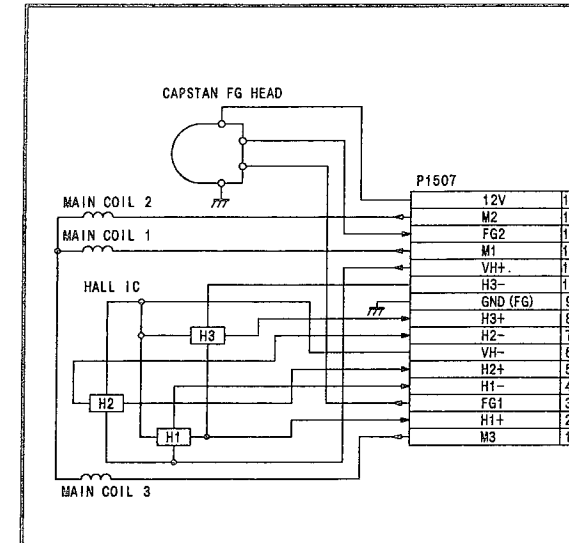


3-2. SYSTEM CONTROL & SERVO BLOCK DIAGRAM

DD CAPSTAN MOTOR



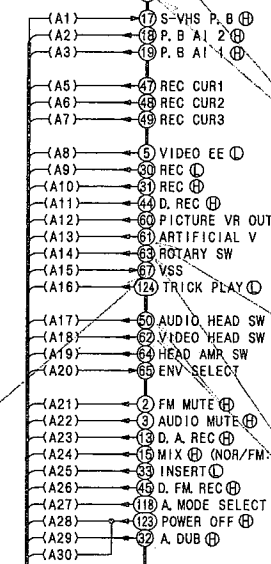
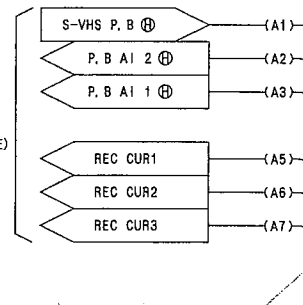
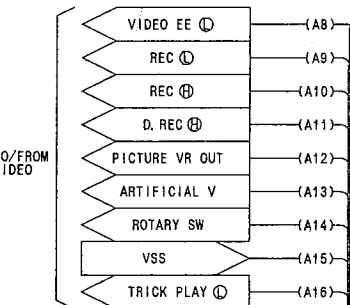
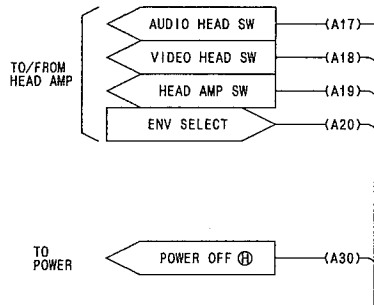
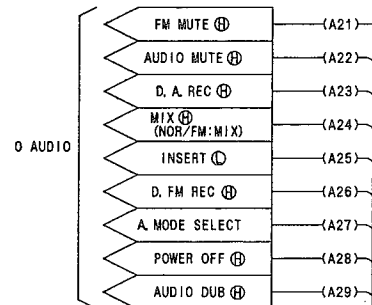
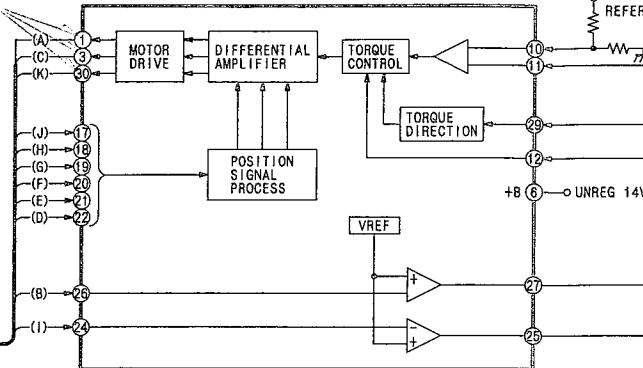
IC2501-1, 3, 30 REC/PLAY
2.0Vp-p (50msec. div.)

REG 12V

NON SW

5V

IC2501 CAPSTAN MOTOR DRIVE IC



IC6001-36 REC
4.0Vp-p (50msec. div.)

IC6001-38 REC
4.8Vp-p (50msec. div.)

IC6001-72, 73 REC
1.1Vp-p (1msec. div.)

IC6001-81 STILL
5.0Vp-p (10msec. div.)

IC6001-82, 83 REC
5.0Vp-p (10msec. div.)

IC6001-50 PLAY
5.0Vp-p (10msec. div.)

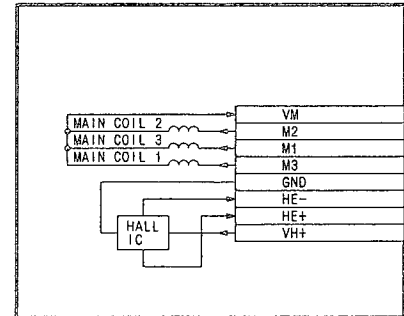
IC6001-66 PLAY
4.0Vp-p (10msec. div.)

IC6001-70, 71 REC
7.0Vp-p (1sec. div.)

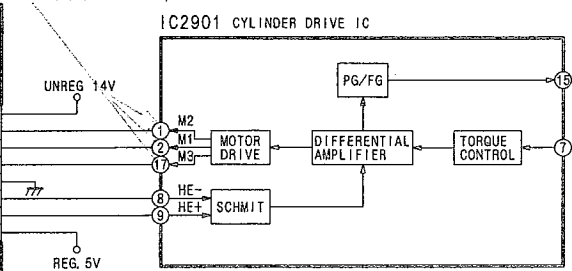
IC6001-74 REC
4.0Vp-p (10msec. div.)

IC6001-82, 83 REC
5.0Vp-p (10msec. div.)

DD CYLINDER MOTOR

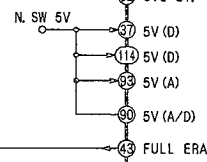


IC2901 CYLINDER DRIVE IC



TO FULL ERASE
P4002 1

QR4007, Q4010
T4002
FULL ERASE
CONTROL
FOR A. DUB



3-6

3-5

UNREG. 14

WHEN SERVICING THE SUPER CAPACITOR,
DO NOT SHORT BOTH (+) AND (-) TERMINAL.

