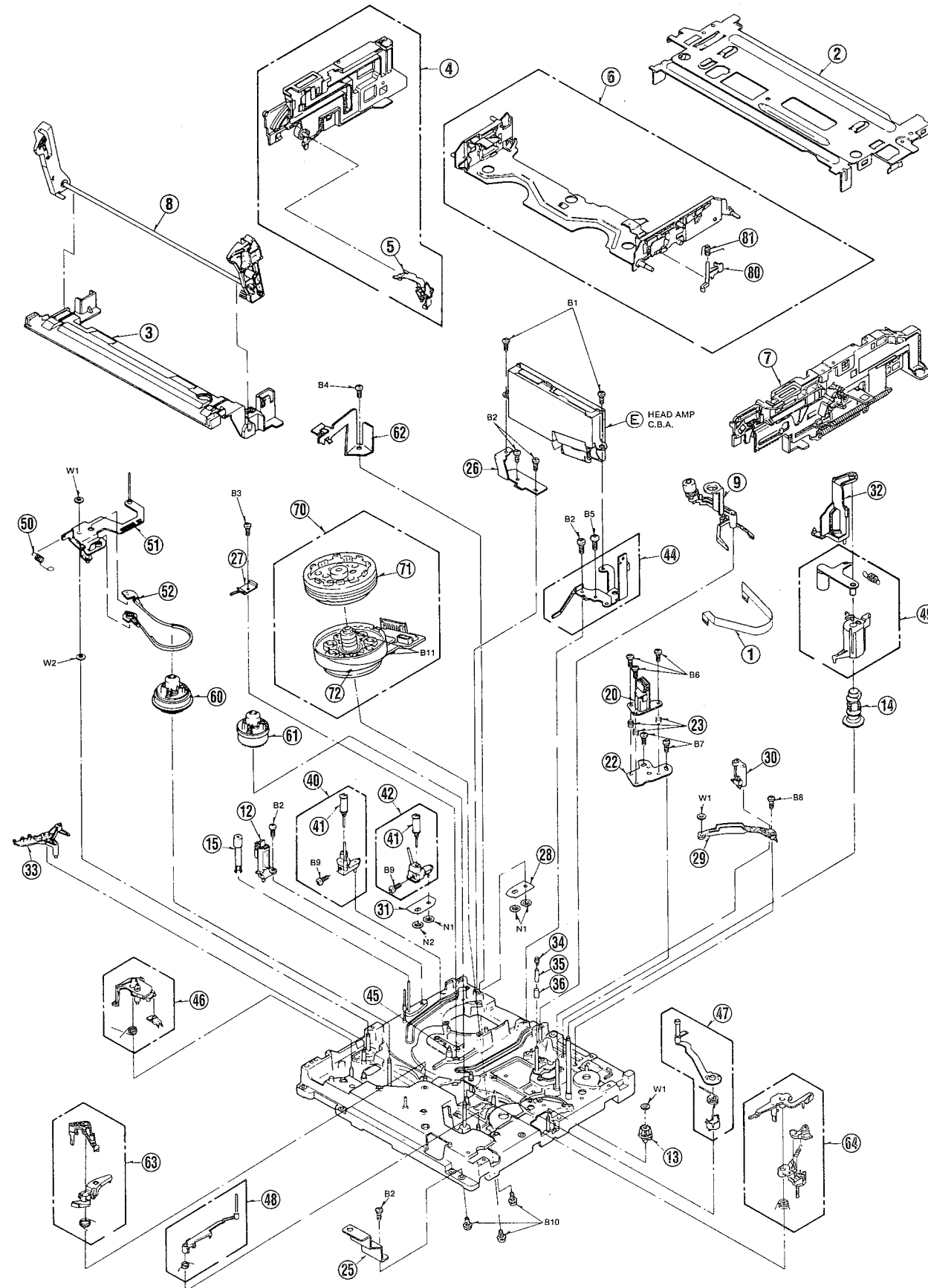


SECTION 5 EXPLODED VIEWS & PARTS LIST

5-1. EXPLODED VIEW & MECHANICAL REPLACEMENT PARTS LIST

CHASSIS PARTS SECTION (1)



Note: 1.* Be sure to make your orders of replacement parts according to this list.
2. IMPORTANT SAFETY NOTICE
Components identified with the mark (!) have the special characteristics for safety. When replacing any of these components, use only the same type.

Ref.No.	Part No.	Part Name & Description	Pcs	Remarks
1 (1)	VWJ0743	FLAT CARD CABLE (6P)	1	P4003-P1501
2 (1)	VMA8644	TOP PLATE	1	
3 (1)	VMA8787	CASSETTE GUIDE	1	
4 (1)	VXA4660	SIDE PLATE (L) UNIT	1	
5 (1)	VML2902	OPENER LEVER	1	
6 (1)	VXA4661	CASSETTE HOLDER PLATE UNIT	1	
7 (1)	VXA4806	SIDE PLATE (R) UNIT	1	
8 (1)	VXP1339	MAIN SHAFT UNIT	1	
9 (1)	VXL2440	CLEANER ARM UNIT	1	
12 (1)	VBS0052	FE HEAD	1	
13 (1)	VDG0871	CARRIAGE CONNECTION GEAR	1	
14 (1)	VDG0886	PINCH CAM GEAR	1	
15 (1)	VXP1402	IMPEDANCE ROLLER UNIT	1	
20 (1)	VED0217	A/C HEAD (1) UNIT	1	
22 (1)	VMA8624	A/C HEAD BASE	1	
23 (1)	VMB2515	A/C HEAD SPRING	3	
25 (1)	VMA8761	MOUNT ANGLE	1	
26 (1)	VMA9158	HEAD AMP MOUNT ANGLE (L)	1	
27 (1)	VMO0917	EARTH SPRING	1	
28 (1)	VMA8874	INCLINE BASE HOLDER (S)	1	
29 (1)	VMD2078	P5 STOPPER BASE	1	
30 (1)	VXA4927	P5 POST STOPPER	1	
31 (1)	VMA8873	INCLINE BASE HOLDER (T)	1	
32 (1)	VMD2101	OPENER PIECE	1	
33 (1)	VML2776	TENSION SPRING ARM	1	
34 (1)	VMX1544	P4 UPPER LIMITER	1	
35 (1)	VMX2175	P4 SLEEVE	1	
36 (1)	VMX2176	P4 LOWER LIMITER	1	
40 (1)	VXA5245KIT	INCLINED BASE (S) UNIT	1	OR VXA4982KIT
41 (1)	VXP1415	ROLLER POST	2	
42 (1)	VXA5247KIT	INCLINED BASE (T) UNIT	1	OR VXA4984KIT
44 (1)	VXA4974	HEAD AMP MOUNT ANGLE (R) U.	1	
45 (1)	VMS5383	CASSETTE POSITION FIXTURE	1	
46 (1)	VXL2310	REVIEW ARM UNIT	1	
47 (1)	VXL2306	P5 ARM UNIT	1	
48 (1)	VXL2394	TAKE UP TENSION REGULATOR	1	
49 (1)	VXL2246	PINCH ARM UNIT	1	
50 (1)	VMB2434	TENSION SPRING	1	
51 (1)	VXL2309	TENSION ARM (1) UNIT	1	
52 (1)	VXZ0310	TENSION BAND UNIT	1	
60 (1)	VXR0236	SUPPLY REEL TABLE UNIT	1	
61 (1)	VXR0237	TAKE UP REEL TABLE UNIT	1	
62 (1)	VXS0241	EARTH PLATE	1	
63 (1)	VXZ0312	SUPPLY BRAKE ARM UNIT	1	
64 (1)	VXZ0313	TAKE UP BRAKE ARM UNIT	1	
70 (1)	VEG1233	CYLINDER UNIT	1	
71 (1)	VXP1575	UPPER CYLINDER UNIT	1	
72 (1)	VSC4137	CYLINDER SHIELD PLATE	1	
80 (1)	VML2680	RELEASE LEVER	1	
81 (1)	VMB2013	RELEASE SPRING	1	
B1 (1)	VHD0773	SCREW	2	
B2 (1)	XTV26+6F	SCREW	5	
B3 (1)	XTV26+4F	SCREW	1	
B4 (1)	XTN3+8FF2	SCREW	1	
B5 (1)	XTV26+10F	SCREW	1	
B6 (1)	VHD0762	SCREW	3	
B7 (1)	XTV26+6F2	SCREW	2	
B8 (1)	XTV26+8F	SCREW	2	
B9 (1)	XQN2+AJ4	SCREW	2	
B10 (1)	VHD0342	SCREW	3	
B11 (1)	XYNW0029	SCREW	2	
N1 (1)	VHN0192	NUT	3	
N2 (1)	VHN0193	NUT	1	
W1 (1)	VMX2208	WASHER	3	
W2 (1)	XWGV26D5G	WASHER	1	

Note: 1.* Be sure to make your orders of replacement parts according to this list.
2. IMPORTANT SAFETY NOTICE
Components identified with the mark (!) have the special characteristics for safety. When replacing any of these components, use only the same type.

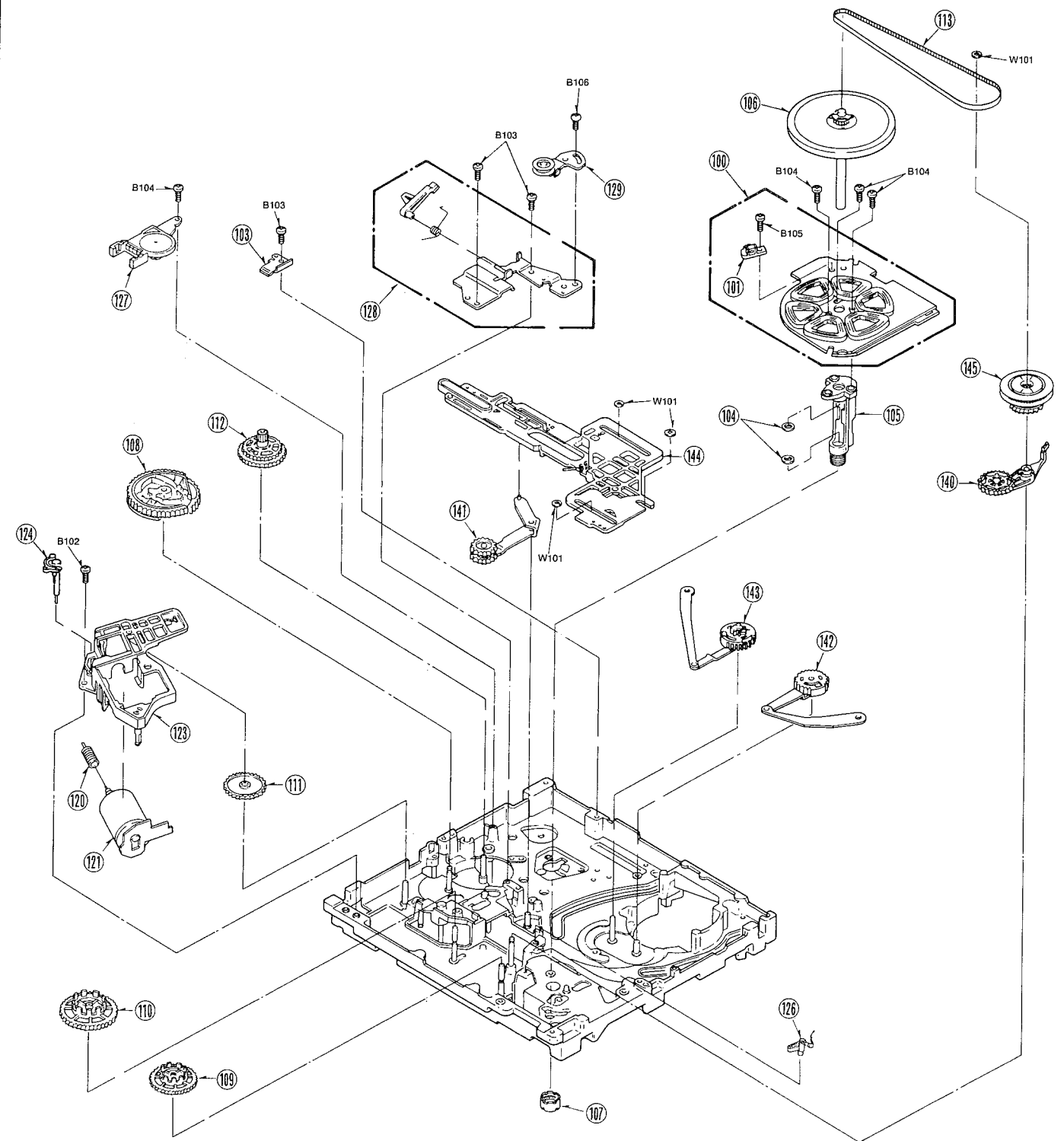
Ref.No.	Part No.	Part Name & Description	Pcs	Remarks
100 (2)	VEK5927	CAPSTAN STATOR UNIT	1	
101 (2)	VBR0061	FG HEAD	1	
103 (2)	VMA8930	ROTOR STOPPER	1	
104 (2)	VMX1927	OIL SEAL	2	
105 (2)	VXD0140	HOUSING UNIT	1	
106 (2)	VXP1519	CAPSTAN ROTOR UNIT	1	
107 (2)	VXQ0297	THRUST SCREW UNIT	1	
108 (2)	VDG0913	MAIN CAM GEAR	1	
109 (2)	VDG0956	SUPPLY REEL GEAR	1	
110 (2)	VDG0957	TAKE UP REEL GEAR	1	
111 (2)	VDG0868	WORM WHEEL GEAR	1	
112 (2)	VDG0885	SUB CAM GEAR	1	
113 (2)	VDV0235	TIMING BELT	1	
120 (2)	VDG0866	WORM GEAR	1	
121 (2)	VEM0427	LOADING MOTOR (1) UNIT	1	
123 (2)	VMD1942	MOTOR BRACKET	1	
124 (2)	VMD2552	S-VHS SW ACTUATOR	1	
126 (2)	VML2725	IDLER CONTROL LEVER	1	
127 (2)	VSS0365	MODE SW	1	
128 (2)	VXA5138	SS BRAKE BASE UNIT	1	
129 (2)	VXA4799	TENSION ROLLER UNIT	1	
140 (2)	VXL2378	IDLER ARM UNIT	1	
141 (2)	VXL2372	DIRECT LEVER UNIT	1	
142 (2)	VXL2299	SUPPLY LOADING ARM UNIT	1	
143 (2)	VXL2300	TAKE UP LOADING ARM UNIT	1	
144 (2)	VXL2307	MAIN LEVER UNIT	1	
145 (2)	VXP1409	CENTRE CLUTCH	1	
B102 (2)	XTV26+8F	SCREW	1	
B103 (2)	XTV26+6F	SCREW	3	
B104 (2)	VHD0753	SCREW	4	
B105 (2)	VHD0754	SCREW	1	
B106 (2)	XSB26+4F2	SCREW	1	
W101 (2)	VMX2208	WASHER	4	

② CHASSIS PARTS SECTION (2)

Note:1.* Be sure to make your orders of replacement parts according to this list.
2.IMPORTANT SAFETY NOTICE
Components identified with the mark (!) have the special characteristics for safety. When replacing any of these components, use only the same type.

Note:1.* Be sure to make your orders of replacement parts according to this list.
2.IMPORTANT SAFETY NOTICE
Components identified with the mark (!) have the special characteristics for safety. When replacing any of these components, use only the same type.

Ref.No.	Part No.	Part Name & Description	Pcs	Remarks	Ref.No.	Part No.	Part Name & Description	Pcs	Remarks
1 (1)	VMJ0743	FLAT CARD CABLE (6P)	1	P4003-P1501	100 (2)	VEK5927	CAPSTAN STATOR UNIT	1	
2 (1)	VMA8644	TOP PLATE	1		101 (2)	VBK0061	FG HEAD	1	
3 (1)	VMA8787	CASSETTE GUIDE	1		103 (2)	VMA8930	ROTOR STOPPER	1	
4 (1)	VXA4660	SIDE PLATE (L) UNIT	1		104 (2)	VMX1927	OIL SEAL	2	
5 (1)	VML2902	OPENER LEVER	1		105 (2)	VXD0140	HOUSING UNIT	1	
6 (1)	VXA4661	CASSETTE HOLDER PLATE UNIT	1		106 (2)	VXP1519	CAPSTAN ROTOR UNIT	1	
7 (1)	VXA4806	SIDE PLATE (R) UNIT	1		107 (2)	VXQ0297	THRUST SCREW UNIT	1	
8 (1)	VXP1339	MAIN SHAFT UNIT	1		108 (2)	VDG0913	MAIN CAM GEAR	1	
9 (1)	VXL2440	CLEANER ARM UNIT	1		109 (2)	VDG0956	SUPPLY REEL GEAR	1	
12 (1)	VBS0052	FE HEAD	1		110 (2)	VDG0957	TAKE UP REEL GEAR	1	
13 (1)	VDG0871	CARRIAGE CONNECTION GEAR	1		111 (2)	VDG0868	WORM WHEEL GEAR	1	
14 (1)	VDG0886	PINCH CAM GEAR	1		112 (2)	VDG0885	SUB CAM GEAR	1	
15 (1)	VXP1402	IMPEDANCE ROLLER UNIT	1		113 (2)	VDV0235	TIMING BELT	1	
20 (1)	VED0217	A/C HEAD (1) UNIT	1		120 (2)	VDG0866	WORM GEAR	1	
22 (1)	VMA8624	A/C HEAD BASE	1		121 (2)	VEY0427	LOADING MOTOR (1) UNIT	1	
23 (1)	VMB2515	A/C HEAD SPRING	3		123 (2)	VMD1942	MOTOR BRACKET	1	
25 (1)	VMA8761	MOUNT ANGLE	1		124 (2)	VMD2552	S-VHS SW ACTUATOR	1	
26 (1)	VMA9158	HEAD AMP MOUNT ANGLE (L)	1		126 (2)	VML2725	IDLER CONTROL LEVER	1	
27 (1)	VMC0917	EARTH SPRING	1		127 (2)	VSS0365	MODE SW	1	
28 (1)	VMA8874	INCLIND BASE HOLDER (S)	1		128 (2)	VXA5138	SS BRAKE BASE UNIT	1	
29 (1)	VMD2078	P5 STOPPER BASE	1		129 (2)	VXA4799	TENSION ROLLER UNIT	1	
30 (1)	VXA4927	P5 POST STOPPER	1		140 (2)	VXL2378	IDLER ARM UNIT	1	
31 (1)	VMA8873	INCLIND BASE HOLDER (T)	1		141 (2)	VXL2372	DIRECT LEVER UNIT	1	
32 (1)	VMD2101	OPENER PIECE	1		142 (2)	VXL2299	SUPPLY LOADING ARM UNIT	1	
33 (1)	VML2776	TENSION SPRING ARM	1		143 (2)	VXL2300	TAKE UP LOADING ARM UNIT	1	
34 (1)	VMX1544	P4 UPPER LIMITER	1		144 (2)	VXL2307	MAIN LEVER UNIT	1	
35 (1)	VMX2175	P4 SLEEVE	1		145 (2)	VXP1409	CENTRE CLUTCH	1	
36 (1)	VMX2176	P4 LOWER LIMITER	1		B102 (2)	XTV26+8F	SCREW	1	
40 (1)	VXA5245KIT	INCLINED BASE (S) UNIT	1	OR VXA4982KIT	B103 (2)	XTV26+6F	SCREW	3	
41 (1)	VXP1415	ROLLER POST	2		B104 (2)	VHD0753	SCREW	4	
42 (1)	VXA5247KIT	INCLINED BASE (T) UNIT	1	OR VXA4984KIT	B105 (2)	VHD0754	SCREW	1	
44 (1)	VXA4974	HEAD AMP MOUNT ANGLE (R) U.	1		B106 (2)	XSB26+4FZ	SCREW	1	
45 (1)	VMS5383	CASSETTE POSITION FIXTURE	1		W101 (2)	VMX2208	WASHER	4	
46 (1)	VXL2310	REVIEW ARM UNIT	1						
47 (1)	VXL2306	P5 ARM UNIT	1						
48 (1)	VXL2394	TAKE UP TENSION REGULATOR ARM UNIT	1						
49 (1)	VXL2246	PINCH ARM UNIT	1						
50 (1)	VMB2434	TENSION SPRING	1						
51 (1)	VXL2309	TENSION ARM (1) UNIT	1						
52 (1)	VXZ0310	TENSION BAND UNIT	1						
60 (1)	VXR0236	SUPPLY REEL TABLE UNIT	1						
61 (1)	VXR0237	TAKE UP REEL TABLE UNIT	1						
62 (1)	VXS0241	EARTH PLATE	1						
63 (1)	VXZ0312	SUPPLY BRAKE ARM UNIT	1						
64 (1)	VXZ0313	TAKE UP BRAKE ARM UNIT	1						
70 (1)	VEG1233	CYLINDER UNIT	1						
71 (1)	VXP1575	UPPER CYLINDER UNIT	1						
72 (1)	VSC4137	CYLINDER SHIELD PLATE	1						
80 (1)	VML2680	RELEASE LEVER	1						
81 (1)	VMB2013	RELEASE SPRING	1						
B1 (1)	VHD0773	SCREW	2						
B2 (1)	XTV26+6F	SCREW	5						
B3 (1)	XTV26+4F	SCREW	1						
B4 (1)	XTN3+8FFZ	SCREW	1						
B5 (1)	XTV26+10F	SCREW	1						
B6 (1)	VHD0762	SCREW	3						
B7 (1)	XTV26+6FZ	SCREW	2						
B8 (1)	XTV26+8F	SCREW	2						
B9 (1)	XQN2+AJ4	SCREW	2						
B10 (1)	VHD0342	SCREW	3						
B11 (1)	XVNV0029	SCREW	2						
N1 (1)	VHN0192	NUT	3						
N2 (1)	VHN0193	NUT	1						
W1 (1)	VMX2208	WASHER	3						
W2 (1)	XWGV26D5G	WASHER	1						



③ CASING PARTS SECTION



Note: 1. * Be sure to make your orders of replacement parts according to this list.
2. **IMPORTANT SAFETY NOTICE**
Components identified with the mark (!) have the special characteristics for safety. When replacing any of these components, use only the same type.

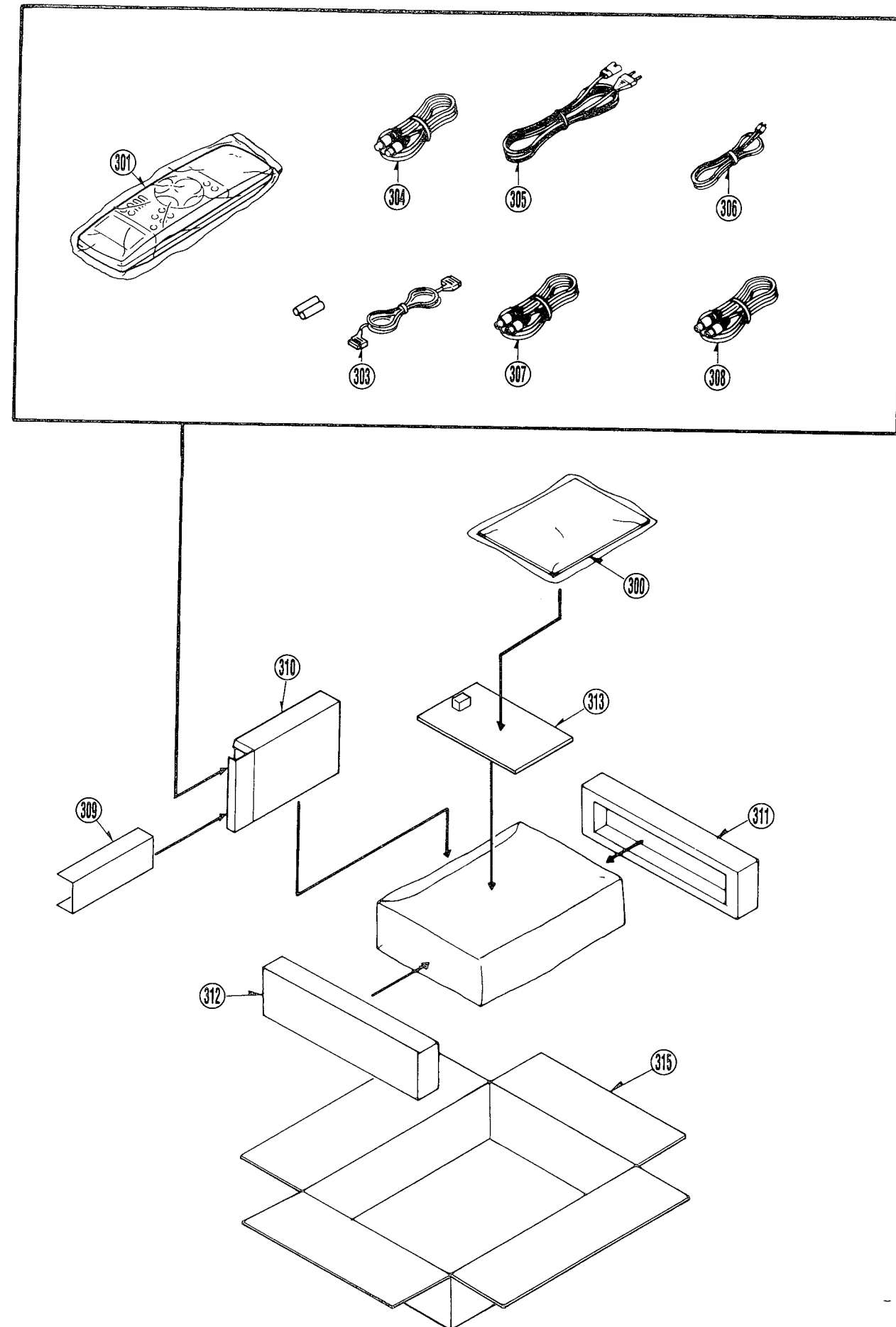
[illegible]

Note:1.* Be sure to make your orders of replacement parts according to this list.
2. IMPORTANT SAFETY NOTICE
Components identified with the mark (!) have the special characteristics for safety. When replacing any of these components, use only the same type.

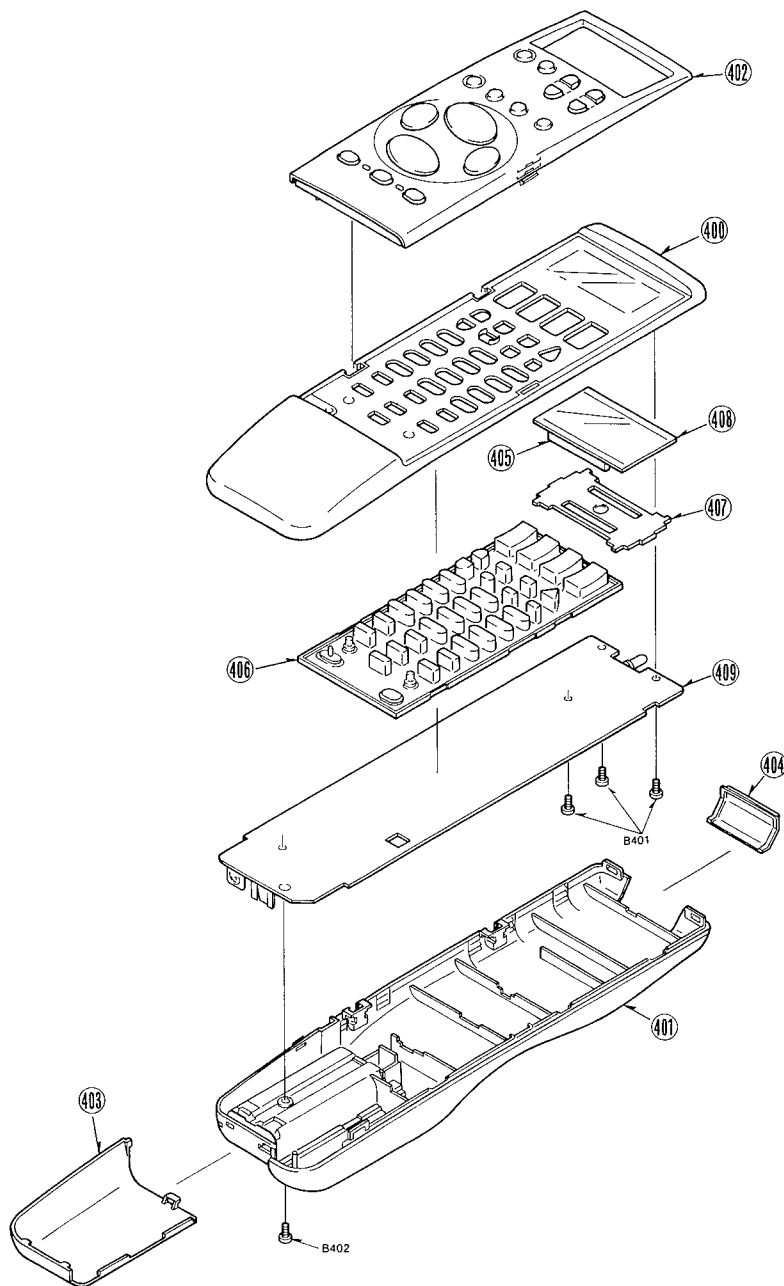
Note:1.* Be sure to make your orders of replacement parts according to this list.
2. IMPORTANT SAFETY NOTICE
Components identified with the mark (!) have the special characteristics for safety. When replacing any of these components, use only the same type.

Ref.No.	Part No.	Part Name & Description	Pcs	Remarks
200 (3)	VGM1150	TOP PANEL	1	
201 (3)	VYP6154	FRONT PANEL (1) UNIT	1	
202 (3)	VGQ2216	DOOR MAGNET	2	
203 (3)	VKF2551	BLINDER PANEL	1	
204 (3)	VDR0148	BLINDER CAM	1	
205 (3)	VMB2521	BLINDER SPRING	1	
206 (3)	VMT0502	BLINDER CUSHION	1	
207 (3)	VKA0197	LEG	1	
208 (3)	VKA0122	FOOT	2	
210 (3)	VVF2316	DOOR PANEL UNIT	1	
211 (3)	VXA5429	DOOR ANGLE (R) UNIT	1	
212 (3)	VXA5431	DOOR ANGLE (L) UNIT	1	
213 (3)	VGU5966	JOG DIAL	1	
214 (3)	VGU6967	SHUTTLE RING	1	
216 (3)	VGH3832	ANTENNA PLATE	1	
217 (3)	VKU0412	BOTTOM PLATE	1	
218 (3)	VJH0832	ANTENNA JACK PLATE	1	
219 (3)	VMC1213	ANTENNA EARTH SPRING	1	
220 (3)	VMP4717	AC PLATE	1	
221 (3)	VM22394	POWER BARRIER	1	
222 (3)	VSC4467	HEAT SINK	1	
223 (3)	ZSB1370YD01E	POWER TRANSISTOR	1	
224 (3)	VJR3	CLAMPER	1	
225 (3)	VMX2233	C.B.A. SPACER	1	
226 (3)	VMC1062	JACK EARTH SPRING	1	
227 (3)	VMC1065	POWER EARTH SPRING	1	
228 (3)	VKF2371	REAR COVER	1	
229 (3)	VMC0357	TR. HOLDER SPRING	1	
231 (3)	VWJ0904	FLAT CARD CABLE (15P)	1	P2004-P1507
232 (3)	VWJ0954	FLAT CARD CABLE (32P)	1	P3003-P7501
233 (3)	VWJ0956	FLAT CARD CABLE (20P)	1	P3001-P501
234 (3)	VEE8564	WIRE CABLE	1	P2003-POWER TR.
235 (3)	VEE9371	WIRE CABLE	1	P3902-P6502
236 (3)	VEE9372	WIRE CABLE	1	P4001-P6503
237 (3)	VEE9373	WIRE CABLE	1	P6002-P3901
238 (3)	VEE9374	WIRE CABLE	1	P4002-P1509
240 (3)	VEE9376	WIRE CABLE	1	P6504-P301
241 (3)	VEE9791	WIRE CABLE	1	P1203-P2002
242 (3)	VEE9792	WIRE CABLE	1	P1202-P2902
243 (3)	VEE9793	WIRE CABLE	1	P1201-P302
245 (3)	VJF0215	BAIND	1	
246 (3)	VJF0977	WIRE LOCK	1	
247 (3)	VM22615	BARRIER	1	
B201 (3)	XTW3+10TFZ	SCREW	4	
B202 (3)	VHD0773	SCREW	3	
B203 (3)	VHD0168	SCREW	3	
B204 (3)	VHD0874	SCREW	1	
B205 (3)	XTV26+8FR	SCREW	3	
B206 (3)	XTV26+10F	SCREW	1	
B207 (3)	XTN2+5GFZ	SCREW	4	
B208 (3)	VHD0418	SCREW	1	
B209 (3)	XTV3+8J	SCREW	4	
B210 (3)	XTV3+12JFZ	SCREW	2	
B211 (3)	XTV3+8GFZ	SCREW	4	
B212 (3)	XTB26+6G	SCREW	1	

4 PACKING PARTS SECTION



⑤ REMOTE CONTROLLER UNIT



Note:1.* Be sure to make your orders of replacement parts according to this list.

2. **IMPORTANT SAFETY NOTICE**
Components identified with the mark (<I>) have the special characteristics for safety. When replacing any of these components, use only the same type.

Ref.No.	Part No.	Part Name & Description	Pcs	Remarks
400 (5)	VYK6508	TOP COVER UNIT	1	
401 (5)	VYK5446	BOTTOM COVER UNIT	1	
402 (5)	VYK6505	DOOR PANEL UNIT	1	
403 (5)	VKF2152	BATTERY COVER	1	
404 (5)	VKW1802	IR WINDOW	1	
405 (5)	VSQ0830	CONDUCTIVE RUBBER	2	
406 (5)	VSP0878	RUBBER CONTACT	1	
407 (5)	VSQ0829	LCD SPACER	1	
408 (5)	VSLO308	LCD	1	
409 (5)	-----	REMOTE CONTROLLER C.B.A.	1	THE C.B.A. IS NOT SUPPLIED AS SPARE PART.
B401 (5)	XTB2+6G	SCREW	3	
B402 (5)	XTB2+8GFZ	SCREW	1	

[illegible]

5-2. ELECTRICAL REPLACEMENT PARTS LIST

Note: 1. Be sure to make your orders of replacement parts according to this list.
 2. IMPORTANT SAFETY NOTICE : Components identified with the mark (!) have the special characteristics for safety. When replacing any of these components, use only the same type.
 3. Unless otherwise specified, All resistors are in OHMS, K=1,000 OHMS. All capacitors are in MICRO-FARADS(uf), P=uuF.
 4. The P.C. Board units marked with '!' show below the main assembled parts.
 5. The marking (RTL) indicates the retention time is limited for this item. After the discontinuation of this assembly in production, it will no longer be available.

Ref.No.	Part No.	Part Name & Description	Pcs	Remarks
	VEPO3B73B	MAIN C.B.A.	1	(RTL)
		(Page:5-8)		INCLUDING THE
		Hi-Fi AUDIO PACK		
		C.B.A. (VEPO4447PR),		
		NICAM DECODER PACK		
		C.B.A. (VEPO7787L),		
		TV DEMODULATOR PACK		
		C.B.A. (VEPO7797D).		
	VEPO4447PR	Hi-Fi AUDIO PACK C.B.A.	1	(RTL)
				INCLUDED IN MAIN
				C.B.A. (VEPO3B73B).
	VEPO7787L	NICAM DECODER PACK C.B.A.	1	(RTL)
				INCLUDED IN MAIN
				C.B.A. (VEPO3B73B).
	VEPO7797D	TV DEMODULATOR PACK C.B.A.	1	(RTL)
				INCLUDED IN MAIN
				C.B.A. (VEPO3B73B).
	VEPO3B90A	LUMINANCE & CHROMINANCE	1	(RTL)
		C.B.A. (Page:5-15)		
	VEPO3B75B	INPUT/OUTPUT C.B.A.	1	(RTL)
		(Page:5-17)		
	VEPO5176G	HEAD AMP C.B.A.	1	(RTL)
		(Page:5-18)		
	VEPO6A17B	VR C.B.A.	1	(RTL)
		(Page:5-19)		INCLUDING THE
		FRONT JACK C.B.A.		
		(VEPO4531A).		
	VEPO4531A	FRONT JACK C.B.A.	1	(RTL)
				INCLUDED IN VR
				C.B.A. (VEPO6A17B).
	VEPO8178A	TRANSCODER C.B.A.	1	(RTL)
		(Page:5-20)		
	VEPO7808B	TIMER C.B.A.	1	(RTL)
		(Page:5-21)		
	VEPO1639B	POWER C.B.A.	1	(RTL) (!)
		(Page:5-22)		
	VEPO1637A	SUB POWER C.B.A.	1	(RTL) (!)
		(Page:5-23)		
	VEX0231	CYLINDER DRIVE C.B.A.	1	(RTL)
		(Page:5-23)		
	-----	MOTOR C.B.A.	1	C.B.A. IS INCLUDED
		(Page:5-23)		IN LOADING MOTOR (1)
				UNIT(VE90427).
	ENV57C01H6	TUNER	1	(!)
F1101	XBA2C16TH15	FUSE	1	(!)

Ref.No.	Part No.	Part Name & Description	Pcs	Remarks
	VEPO3B73B	MAIN C.B.A.		(RTL)
C0701	ECUX1H1032FV	C.CAPACITOR CH 50V 0.01U	1	
C0702	ECUX1H100DCV	C.CAPACITOR CH 50V 10P	1	
C0703-10	ECUX1H1032FV	C.CAPACITOR CH 50V 0.01U	8	
C0711	ECUM1H080DPN	C.CAPACITOR CH 50V 8P	1	
C0712	ECQV1H104JM	P.CAPACITOR 50V 0.1U	1	
C0714	ECEA1HKA2R2	E.CAPACITOR 50V 2.2U	1	
C0715,16	ECEA1CKA220	E.CAPACITOR 16V 22U	2	
C0717	ECUX1H1032FV	C.CAPACITOR CH 50V 0.01U	1	
C0718,19	ECEA1HKA2R2	E.CAPACITOR 50V 2.2U	2	
C0720-22	ECUX1H1032FV	C.CAPACITOR CH 50V 0.01U	3	
C0723	ECEA1CKA100	E.CAPACITOR 16V 10U	1	
C0727	ECEA1CKA100	E.CAPACITOR 16V 10U	1	
C0728	ECEA1HKA0R1	E.CAPACITOR 50V 0.1U	1	
C0729	ECUX1H1032FV	C.CAPACITOR CH 50V 0.01U	1	
C0730	ECEA1CKA100	E.CAPACITOR 16V 10U	1	
C0731	ECEA1CKA101	E.CAPACITOR 16V 100U	1	
C0733	ECEA1HKA2R2	E.CAPACITOR 50V 0.22U	1	
C0734,35	ECUX1H560JCV	C.CAPACITOR CH 50V 56P	2	
C0737	ECUM1H333KBN	C.CAPACITOR CH 50V 0.033U	1	
C0738	ECUX1H180JCV	C.CAPACITOR CH 50V 18P	1	
C1001	ECUM1H1032FN	C.CAPACITOR CH 50V 0.01U	1	
C1002	ECEA1CU470	E.CAPACITOR 16V 47U	1	
C1003	ECEA1CU101	E.CAPACITOR 16V 100U	1	
C1004	ECUM1H1032FN	C.CAPACITOR CH 50V 0.01U	1	
C1005	ECEA1KA220	E.CAPACITOR 10V 22U	1	
C1006	ECEA0JKA101	E.CAPACITOR 6.3V 100U	1	
C1007	ECUM1H1032FN	C.CAPACITOR CH 50V 0.01U	1	
C1008	ECEA1KA220	E.CAPACITOR 10V 22U	1	
C1009	ECEA0JKA101	E.CAPACITOR 6.3V 100U	1	
C1013	ECUM1H1042FN	C.CAPACITOR CH 50V 0.1U	1	
C1018	ECUM1H1032FN	C.CAPACITOR CH 50V 0.01U	1	
C1020	ECEA0JKA101	E.CAPACITOR 6.3V 100U	1	
C1021	ECUM1H1032FN	C.CAPACITOR CH 50V 0.01U	1	
C1022	ECEA1KA220	E.CAPACITOR 10V 22U	1	
C1023	VCE0073	E.CAPACITOR	1	
C2004	ECEA0JKA221	E.CAPACITOR 6.3V 220U	1	
C2005	ECUM1H472KBN	C.CAPACITOR CH 50V 4700P	1	
C2006	ECQV1H683JM	P.CAPACITOR 50V 0.068U	1	
C2007,08	ECUM1H102KBN	C.CAPACITOR CH 50V 1000P	2	
C2009,10	ECUM1C1052FN	C.CAPACITOR CH 16V 1U	2	
C2011	ECEA1EKA4R7	E.CAPACITOR 25V 4.7U	1	
C2012,13	ECEA1EKN3R3	E.CAPACITOR 25V 3.3U	2	
C2014	ECUM1H222KBN	C.CAPACITOR CH 50V 2200P	1	
C2015	ECUM1H471JCN	C.CAPACITOR CH 50V 470P	1	
C2016	ECEA0JKA221	E.CAPACITOR 6.3V 220U	1	
C2017	ECEA1CKA100	E.CAPACITOR 16V 10U	1	
C2018	ECUM1H223KBN	C.CAPACITOR CH 50V 0.022U	1	
C2019	ECUM1H1042FN	C.CAPACITOR CH 50V 0.1U	1	
C2020	ECUM1H392KBN	C.CAPACITOR CH 50V 3900P	1	
C2021	ECUM1H222KBN	C.CAPACITOR CH 50V 2200P	1	
C2022,23	ECUM1H102KBN	C.CAPACITOR CH 50V 1000P	2	
C2027	ECEA1HKA4R7	E.CAPACITOR 50V 0.47U	1	
C2028	ECUM1H101JCN	C.CAPACITOR CH 50V 100P	1	
C2029	ECEA1CKA470	E.CAPACITOR 16V 47U	1	
C2030	ECEA0JKA470	E.CAPACITOR 6.3V 47U	1	
C2501,02	ECEA1HKA2R2	E.CAPACITOR 50V 2.2U	2	
C2503	ECEA1B4470	E.CAPACITOR 25V 47U	1	
C2504	ECEA1HKNR22	E.CAPACITOR 50V 0.22U	1	
C2505	ECEA1HKA010	E.CAPACITOR 50V 1U	1	
C2507,08	ECUM1E333KBN	C.CAPACITOR CH 25V 0.033U	2	
C2509	ECUM1H1032FN	C.CAPACITOR CH 50V 0.01U	1	
C2510	ECA0JM221	E.CAPACITOR 6.3V 220U	1	
C2513-15	ECUM1E333KBN	C.CAPACITOR CH 25V 0.033U	3	
C2516,17	ECUM1H680JCN	C.CAPACITOR CH 50V 68P	2	
C2518,19	ECUM1C4742FN	C.CAPACITOR CH 16V 0.47U	2	
C2521	ECA1CM221	E.CAPACITOR 16V 220U	1	
C2522	ECEA1HKA2R2	E.CAPACITOR 50V 2.2U	1	
C2523	ECUM1E104KBN	C.CAPACITOR CH 25V 0.1U	1	
C2524	ECQV1H683JM	P.CAPACITOR 50V 0.068U	1	
C3001,02	ECUM1H1032FN	C.CAPACITOR CH 50V 0.01U	2	
C3003	ECEA1HKA010	E.CAPACITOR 50V 1U	1	

Ref.No.	Part No.	Part Name & Description	Pcs	Remarks	Ref.No.	Part No.	Part Name & Description	Pcs	Remarks
C3004	ECUM1H1042FN	C. CAPACITOR CH 50V 0.1U	1		C4027	ECUM1H1032FN	C. CAPACITOR CH 50V 0.01U	1	
C3005	ECA0JM331	E. CAPACITOR 6.3V 330U	1		C4028	ECQB1H472JF	P. CAPACITOR 50V 4700P	1	
C3006-08	ECEA1HKA010	E. CAPACITOR 50V 1U	3		C4029	ECEA1CKA100	E. CAPACITOR 16V 10U	1	
C3009	ECUM1H1032FN	C. CAPACITOR CH 50V 0.01U	1		C4030	ECEA1AKA101	E. CAPACITOR 10V 100U	1	
C3010	ECA0JM331	E. CAPACITOR 6.3V 330U	1		C4031	ECUM1C1052FN	C. CAPACITOR CH 16V 1U	1	
C3011	ECEA1CKA100	E. CAPACITOR 16V 10U	1		C4032	ECEA1CKA100	E. CAPACITOR 16V 10U	1	
C3012	ECA0JM331	E. CAPACITOR 6.3V 330U	1		C4501	ECQB1H152JZ	F. CAPACITOR 50V 1500P	1	
C3013	ECEA1CKA100	E. CAPACITOR 16V 10U	1		C4502	ECUX1C1042FV	C. CAPACITOR CH 16V 0.1U	1	
C3016	ECUM1H180JCN	C. CAPACITOR CH 50V 18P	1		C4503	ECUX1H152KBV	C. CAPACITOR CH 50V 1500P	1	
C3017	ECUM1H150JCN	C. CAPACITOR CH 50V 15P	1		C4504,05	ECEA1CU470	E. CAPACITOR 16V 47U	2	
C3018	ECEA1CKA470	E. CAPACITOR 16V 47U	1		C4506	ECEA1CU100	E. CAPACITOR 16V 10U	1	
C3019	ECUM1H560JCN	C. CAPACITOR CH 50V 56P	1		C4507	ECQB1H223JF	P. CAPACITOR 50V 0.022U	1	
C3020-22	ECUM1H1032FN	C. CAPACITOR CH 50V 0.01U	3		C4508	ECEA1EB24R7	E. CAPACITOR 25V 4.7U	1	
C3023	ECUM1H102JCN	C. CAPACITOR CH 50V 1000P	1		C4509	ECEA1AU470	E. CAPACITOR 10V 47U	1	
C3024	ECUM1H820JCN	C. CAPACITOR CH 50V 82P	1		C4510	ECQB1H103JF	P. CAPACITOR 50V 0.01U	1	
C3025	ECUM1H100DCN	C. CAPACITOR CH 50V 10P	1		C4511	ECQB1H332JF	P. CAPACITOR 50V 3300P	1	
C3026	ECUM1H560JCN	C. CAPACITOR CH 50V 56P	1		C4512	ECUX1H561JV	C. CAPACITOR CH 50V 560P	1	
C3027	ECUM1H1032FN	C. CAPACITOR CH 50V 0.01U	1		C4513	ECUX1H681JV	C. CAPACITOR CH 50V 680P	1	
C3029	ECUM1H330JCN	C. CAPACITOR CH 50V 33P	1		C4514	ECUX1H561JV	C. CAPACITOR CH 50V 560P	1	
C3030	ECUM1H220JCN	C. CAPACITOR CH 50V 22P	1		C4515	ECEA1EU4R7	E. CAPACITOR 25V 4.7U	1	
C3032,33	ECUM1H1042FN	C. CAPACITOR CH 50V 0.1U	2		C4517	ECEA1AU101	E. CAPACITOR 10V 100U	1	
C3034	ECEA1HKA010	E. CAPACITOR 50V 1U	1		C4518	ECUX1C1042FV	C. CAPACITOR CH 16V 0.1U	1	
C3035	ECUM1H1032FN	C. CAPACITOR CH 50V 0.01U	1		C4521	ECUM1E473KBN	C. CAPACITOR CH 25V 0.047U	1	
C3036	ECUM1H101JCN	C. CAPACITOR CH 50V 100P	1		C4522	ECEA1HU3R3	E. CAPACITOR 50V 3.3U	1	
C3037	ECUM1H330JCN	C. CAPACITOR CH 50V 33P	1		C4528	ECUX1C1042FV	C. CAPACITOR CH 16V 0.1U	1	
C3039,40	ECUM1H1032FN	C. CAPACITOR CH 50V 0.01U	2		C4530	ECEA0JU470	E. CAPACITOR 6.3V 47U	1	
C3041,42	ECUM1H100DCN	C. CAPACITOR CH 50V 10P	2		C4533	ECEA1CU330	E. CAPACITOR 16V 33U	1	
C3043	ECUM1H101JCN	C. CAPACITOR CH 50V 100P	1		C4537	ECUX1H102JCV	C. CAPACITOR CH 50V 1000P	1	
C3044	ECUM1H680JCN	C. CAPACITOR CH 50V 68P	1		C4538	ECEA1HUR47	E. CAPACITOR 50V 0.47U	1	
C3045	ECUM1H820JCN	C. CAPACITOR CH 50V 82P	1		C4539	ECUX1C2242FV	C. CAPACITOR CH 16V 0.22U	1	
C3046,47	ECUM1H1032FN	C. CAPACITOR CH 50V 0.01U	2		C4541	ECUX1C1042FV	C. CAPACITOR CH 16V 0.1U	1	
C3048	ECUM1H101JCN	C. CAPACITOR CH 50V 100P	1		C4545	ECUX1H102KBV	C. CAPACITOR CH 50V 1000P	1	
C3049	ECUM1H271JCN	C. CAPACITOR CH 50V 270P	1		C4551	ECQB1H223JF	P. CAPACITOR 50V 0.022U	1	
C3050	ECUM1H1032FN	C. CAPACITOR CH 50V 0.01U	1		C4552	ECUX1C1042FV	C. CAPACITOR CH 16V 0.1U	1	
C3052-56	ECUM1H102KBN	C. CAPACITOR CH 50V 1000P	5		C4556	ECEA1CU100	E. CAPACITOR 16V 10U	1	
C3057	ECUM1H1042FN	C. CAPACITOR CH 50V 0.1U	1		C4558	ECEA1EB24R7	E. CAPACITOR 25V 4.7U	1	
C3058	ECUM1H1032FN	C. CAPACITOR CH 50V 0.01U	1		C4559	ECEA1AU470	E. CAPACITOR 10V 47U	1	
C3059	ECEA0JKA470	E. CAPACITOR 6.3V 47U	1		C4560	ECQB1H103JF	P. CAPACITOR 50V 0.01U	1	
C3060,61	ECUM1H1032FN	C. CAPACITOR CH 50V 0.01U	2		C4561	ECQB1H332JF	P. CAPACITOR 50V 3300P	1	
C3062	ECUM1H680JCN	C. CAPACITOR CH 50V 68P	1		C4562	ECUX1H561JV	C. CAPACITOR CH 50V 560P	1	
C3063	ECUM1H1032FN	C. CAPACITOR CH 50V 0.01U	1		C4563	ECUX1H681JV	C. CAPACITOR CH 50V 680P	1	
C3064	ECUM1H332KBN	C. CAPACITOR CH 50V 3300P	1		C4564	ECUX1H561JV	C. CAPACITOR CH 50V 560P	1	
C3065	ECEA0JKA101	E. CAPACITOR 6.3V 100U	1		C4565	ECEA1EU4R7	E. CAPACITOR 25V 4.7U	1	
C3066	ECUM1H1032FN	C. CAPACITOR CH 50V 0.01U	1		C4567	ECEA1AU101	E. CAPACITOR 10V 100U	1	
C3067	ECEA1HKA3R3	E. CAPACITOR 50V 3.3U	1		C4568	ECUX1C1042FV	C. CAPACITOR CH 16V 0.1U	1	
C3068	ECEA1CKA100	E. CAPACITOR 16V 10U	1		C4572	ECEA1HU3R3	E. CAPACITOR 50V 3.3U	1	
C3069	ECUM1H1032FN	C. CAPACITOR CH 50V 0.01U	1		C4576	ECUM1E473KBN	C. CAPACITOR CH 25V 0.047U	1	
C3070	ECUM1H1042FN	C. CAPACITOR CH 50V 0.1U	1		C4583	ECEA1CU330	E. CAPACITOR 16V 33U	1	
C3073,74	ECUM1H1032FN	C. CAPACITOR CH 50V 0.01U	2		C4585,86	ECEA1AU101	E. CAPACITOR 10V 100U	2	
C3075,76	ECEA1AKA330	E. CAPACITOR 10V 33U	2		C4591	ECUX1C1042FV	C. CAPACITOR CH 16V 0.1U	1	
C3077	ECEA1CKA100	E. CAPACITOR 16V 10U	1		C4592	ECUX1H152KBV	C. CAPACITOR CH 50V 1500P	1	
C3079	ECUM1H1042FN	C. CAPACITOR CH 50V 0.1U	1		C4593	ECUX1H221JCV	C. CAPACITOR CH 50V 220P	1	
C3080	ECUM1H470JCN	C. CAPACITOR CH 50V 47P	1		C4594,95	ECUX1H101JCV	C. CAPACITOR CH 50V 100P	2	
C3081-84	ECUM1H1032FN	C. CAPACITOR CH 50V 0.01U	4		C4596	ECEA1CU100	E. CAPACITOR 16V 10U	1	
C3085	ECUM1H180JCN	C. CAPACITOR CH 50V 18P	1		C4597	ECUX1H330JCV	C. CAPACITOR CH 50V 33P	1	
C3086	ECUM1H1042FN	C. CAPACITOR CH 50V 0.1U	1		C4598	ECUX1H102JCV	C. CAPACITOR CH 50V 1000P	1	
C3087-89	ECUM1H102JCN	C. CAPACITOR CH 50V 1000P	3		C4604	ECUM1H182JN	C. CAPACITOR CH 50V 1800P	1	
C3091	ECUM1H222KBN	C. CAPACITOR CH 50V 2200P	1		C4606	ECEA0JU470	E. CAPACITOR 6.3V 47U	1	
C3092	ECUM1H1042FN	C. CAPACITOR CH 50V 0.1U	1		C4611	ECQB1H182JZ	F. CAPACITOR 50V 1800P	1	
C3093	ECUM1H1032FN	C. CAPACITOR CH 50V 0.01U	1		C4613	ECUX1H821JCV	C. CAPACITOR CH 50V 820P	1	
C4001	ECEA1AKA220	E. CAPACITOR 10V 22U	1		C4616	ECUX1H1022FV	C. CAPACITOR CH 50V 1000P	1	
C4002	ECEA1HKA3R3	E. CAPACITOR 50V 3.3U	1		C4617	ECEA10M22	E. CAPACITOR 10V 22U	1	
C4003	ECUM1H1042FN	C. CAPACITOR CH 50V 0.1U	1		C4618	ECQB1H822JZ	P. CAPACITOR 50V 8200P	1	
C4004,05	ECUM1H1032FN	C. CAPACITOR CH 50V 0.01U	2		C4621	ECEA0JU101	E. CAPACITOR 6.3V 100U	1	
C4006,07	ECEA1CKA100	E. CAPACITOR 16V 10U	2		C4629	ECQB1H562JF	P. CAPACITOR 50V 5600P	1	
C4008	ECCD2H181J	C. CAPACITOR 500V 180P	1		C4636	ECUX1H471JV	C. CAPACITOR CH 50V 470P	1	
C4009	ECQP1222JZ	P. CAPACITOR 100V 2200P	1		C4638	ECQB1H822JZ	P. CAPACITOR 50V 8200P	1	
C4010	ECQB1H223JF	P. CAPACITOR 50V 0.022U	1		C4652,53	ECUM1C1052FN	C. CAPACITOR CH 16V 1U	2	
C4011	ECUM1H1032FN	C. CAPACITOR CH 50V 0.01U	1		C6001	ECUM1H1042FN	C. CAPACITOR CH 50V 0.1U	1	
C4012	ECEA1CKA100	E. CAPACITOR 16V 10U	1		C6002	ECEA1HKA2R2	E. CAPACITOR 50V 2.2U	1	
C4013	ECUM1H102JCN	C. CAPACITOR CH 50V 1000P	1		C6004	ECUM1H270JCN	C. CAPACITOR CH 50V 27P	1	
C4022	ECQB1H102JZ	P. CAPACITOR 50V 1000P	1		C6005	ECUM1H150JCN	C. CAPACITOR CH 50V 15P	1	
C4023	ECQB1H103JZ	P. CAPACITOR 50V 0.01U	1		C6006	ECUM1H1042FN	C. CAPACITOR CH 50V 0.1U	1	
C4024	ECEA16M33	E. CAPACITOR 16V 33U	1		C6007	ECEA0JKA470	E. CAPACITOR 6.3V 47U	1	
C4025	ECQV1H104JM	P. CAPACITOR 50V 0.1U	1		C6008	ECUM1H102KBN	C. CAPACITOR CH 50V 1000P	1	

Ref.No.	Part No.	Part Name & Description	Pcs	Remarks
DU7601	ENV57001H6	TUNER	1	<1>
FL3001	VLFO765	FILTER	1	
FL3002	VLFI120	FILTER	1	
FL7301,02	VLFO633	FILTER	2	
IC0701	TDA9814T/V3	IC	1	
IC2501	BA6871BS	IC	1	
IC3001	AN3581S	IC	1	
IC3003	M52376FP	IC	1	
IC3004	NJM2233BWA	IC	1	
IC3005	HA17431PA	IC	1	
IC3006	M52055FP	IC	1	
IC3007	AN3916	IC	1	
IC3008	UPC78L05J	IC	1	
IC4001	NJM4565DD	IC	1	
IC4501	XLH7773AKS	IC	1	
IC4601	BA7755AF	IC	1	
IC6001	MN6755486H4H	IC	1	
IC6002,03	ON1387T	IC	2	
IC6004	BA6887-V3	IC	1	
IC6701	MC74HCL161AF2	IC	1	
IC6702	ST24C08CB1	IC	1	
IC6703	MC74HCL164FL2	IC	1	
IC6704	SAA52812PM3	IC	1	
IC6705	TDA8501	IC	1	
IC6706	P83C528MAAA	IC	1	
IC6707	M52055FP	IC	1	
IC6708	MC74HC573AF2	IC	1	
IC6709	NJM2234MA	IC	1	
IC6710	M27C512MFNA	IC	1	
IC6711	NJM2235MA	IC	1	
IC6712	UPC393G2	IC	1	
IC7301	MSP3410-15	IC	1	
IC7302	PST7043	IC	1	
IC7303	M5238FP	IC	1	
IC7304	HA17431PA	IC	1	
IC7305	MN15540ZVZDB	IC	1	
IC7306	PST7043	IC	1	
K2	ERJ3GEYOR00	M.RESISTOR CH1/16W	0	1
K4	ERJ3GEYOR00	M.RESISTOR CH1/16W	0	1
K6	ERJ3GEYOR00	M.RESISTOR CH1/16W	0	1
K0702	ERJ3GEYOR00	M.RESISTOR CH1/16W	0	1
K0705	ERJ3GEYOR00	M.RESISTOR CH1/16W	0	1
K2001,02	ERJ6GM2OR00	M.RESISTOR CH 1/10W	0	2
K3001,02	ERJ6GM2OR00	M.RESISTOR CH 1/10W	0	2
K3005-07	ERJ6GM2OR00	M.RESISTOR CH 1/10W	0	3
K6004	ERJ6GM2OR00	M.RESISTOR CH 1/10W	0	1
K6703,04	ERJ6GM2OR00	M.RESISTOR CH 1/10W	0	2
K7304	ERJ3GEYOR00	M.RESISTOR CH1/16W	0	1
K7306	ERJ3GEYOR00	M.RESISTOR CH1/16W	0	1
K7316,17	ERJ3GEYOR00	M.RESISTOR CH1/16W	0	2
K7603	ERJ6GM2OR00	M.RESISTOR CH 1/10W	0	1
L0701	VLQ0163JR15	COIL	0.15UH	1
L0702,03	VLQ0163JR47	COIL	0.47UH	2
L0704-07	ELJFA151KB	COIL		4
L0709	VLQEL05S100K	COIL	10UH	1
L2001	ERJ6GM2OR00	M.RESISTOR CH 1/10W	0	1
L2005	VLQ0569	COIL		1
L2501	ELESE102KA	COIL	1000UH	1
L3001	VLQ0599J680	COIL	68UH	1
L3002	ELESE681KA	COIL	680UH	1
L3003	VLQ0599J680	COIL	68UH	1
L3004	VLQ0599J470	COIL	47UH	1
L3005	VLQ0599J120	COIL	12UH	1
L3006	VLQ0599J100	COIL	10UH	1
L3007	VLQ0599J120	COIL	12UH	1

Ref.No.	Part No.	Part Name & Description	Pcs	Remarks
L3009	VLQ0599J270	COIL	27UH	1
L3010	VLQ0599J820	COIL	82UH	1
L3012	VLQ0599J181	COIL	180UH	1
L3013	VLQ0599J151	COIL	150UH	1
L3017	VLQ0599J270	COIL	27UH	1
L3018	VLQ0599J680	COIL	68UH	1
L4001	VLQ0599J680	COIL	68UH	1
L4002	ELESE471KA	COIL		1
L4501,02	ELESE101KA	COIL	100UH	2
L4601	VLQEL07F153J	COIL		1
L6001-03	VLQ0599J680	COIL	68UH	3
L6004	VLP0074	COIL		1
L6006-12	VLP0145	COIL		7
L6701	VLP0083	COIL		1
L6702	VLQ0599J680	COIL	68UH	1
L6703	ELESE3R3KA	COIL	3.3UH	1
L6704	VLQ0599J680	COIL	68UH	1
L6705	VLQ0599J390	COIL	39UH	1
L6706-08	VLP0083	COIL		3
L6709	VLQ0599J680	COIL	68UH	1
L7301	ELEXH100JBV	COIL	10UH	1
L7302	VLP0150	INDUCTOR		1
L7601,02	VLQ0599J1R0	COIL	1UH	2
L7603-05	VLQ0599J680	COIL	68UH	3
L7608	VLQ0599J2R7	COIL	2.7UH	1
LB3001	VLP0085	COIL		1
P1001	VJS3631A011A	CONNECTOR (FEMALE)	11P	1
P2002	VJP1232T	CONNECTOR (MALE)	5P	1
P2003	VJP3483	CONNECTOR (MALE)	3P	1
P2004	VJS3537A015G	CONNECTOR (FEMALE)	15P	1
P3001	VJS3537A020G	CONNECTOR (FEMALE)	20P	1
P3003	VJS3537A032G	CONNECTOR (FEMALE)	32P	1
P4001	VJP1932T	CONNECTOR (MALE)		1
P4002	TJS118601T	CONNECTOR		1
P4003	VJS3675A006G	CONNECTOR (FEMALE)	6P	1
P6001	VJS3821	CONNECTOR (FEMALE)	4P	1
P6002	VJP1230T	CONNECTOR (MALE)	3P	1
P6003	VJS3640A002	CONNECTOR (FEMALE)	2P	1
PK0701	VJR0816A010W	CONNECTOR (MALE)	10P	1
PK3001	VJP3043G014W	CONNECTOR (MALE)	14P	1
PK3002	VJP3043A012W	CONNECTOR (MALE)	12P	1
PK3003	VJP3043A013W	CONNECTOR (MALE)	13P	1
PK4001-03	VJR0757B018T	CONNECTOR (MALE)	18P	3
PK7301	VJR0777B009W	CONNECTOR (MALE)	9P	1
PK7302	VJR0777B008W	CONNECTOR (MALE)	8P	1
PP0701	VJP3589A004B	CONNECTOR (MALE)	4P	1
PP3001	VJP3043A012W	CONNECTOR (MALE)	12P	1
PP3002	VJP3043A010W	CONNECTOR (MALE)	10P	1
PP3003,04	VJP3043G011W	CONNECTOR (MALE)	11P	2
Q0701	2SC2377	TRANSISTOR		1
Q0702	MSD601-S	TRANSISTOR		1
Q0703	MSB709	TRANSISTOR		1
Q0704	2SD1994	TRANSISTOR		1
Q0705	2SC3311	TRANSISTOR		1
Q1002,03	2SD1996	TRANSISTOR		2
Q1004	2SB1321A	TRANSISTOR		1
Q1005	2SD1991A	TRANSISTOR		1
Q1006	2SD602A	TRANSISTOR		1
Q1007	2SD601A	TRANSISTOR		1
Q1008,09	2SD1996	TRANSISTOR		2
Q1010,11	2SD1328	TRANSISTOR		2
Q3001	MSD602	TRANSISTOR		1
Q3002	2SC2404	TRANSISTOR		1
Q3003	MSD601	TRANSISTOR		1
Q3004	2SC2404	TRANSISTOR		1

Ref.No.	Part No.	Part Name & Description	Pcs	Remarks
Q3005,06	MSB709	TRANSISTOR	2	
Q3007,08	MSD601	TRANSISTOR	2	
Q3009,10	MSC2295	TRANSISTOR	2	
Q3011	MSD602	TRANSISTOR	1	
Q3012	MSB710	TRANSISTOR	1	
Q3013	MSD602	TRANSISTOR	1	
Q3014	MSB710	TRANSISTOR	1	
Q3015,16	MSD601	TRANSISTOR	2	
Q3017	MSB709	TRANSISTOR	1	
Q3018	MSD601	TRANSISTOR	1	
Q3019	2SD1996	TRANSISTOR	1	
Q3021	MSC2295	TRANSISTOR	1	
Q3022	MSB709	TRANSISTOR	1	
Q4002	2SD601A	TRANSISTOR	1	
Q4006	MSB710	TRANSISTOR	1	
Q4007,08	MSD601	TRANSISTOR	2	
Q4009	2SD602A-R	TRANSISTOR	1	
Q4010	MSB710	TRANSISTOR	1	
Q4011	2SD601A	TRANSISTOR	1	
Q4012	2SD1328	TRANSISTOR	1	
Q4501	2SD655T2	TRANSISTOR	1	
Q4551	2SB561	TRANSISTOR	1	
Q4552	2SD1819A	TRANSISTOR	1	
Q4601,02	2SD1819A	TRANSISTOR	2	
Q6001	MSB709	TRANSISTOR	1	
Q6002,03	PN205LT-NCVT	PHOTO TRANSISTOR	2	
Q6004	MSD601	TRANSISTOR	1	
Q7301,02	2SD1996	TRANSISTOR	2	
Q7303,04	2SC2404	TRANSISTOR	2	
Q7307	2SB709A	TRANSISTOR	1	
Q7310	2SB709A	TRANSISTOR	1	
Q7312,13	2SD1328-S	TRANSISTOR	2	
QR0701	XN4213	TRANSISTOR-RESISTOR	1	
QR0702	XN4211	TRANSISTOR-RESISTOR	1	
QR0703	XN4213	TRANSISTOR-RESISTOR	1	
QR0704	MKN1404	TRANSISTOR-RESISTOR	1	
QR1001	MUN2111	TRANSISTOR-RESISTOR	1	
QR1002	MUN2213	TRANSISTOR-RESISTOR	1	
QR1003,04	MUN2211	TRANSISTOR-RESISTOR	2	
QR2001,02	MUN2213	TRANSISTOR-RESISTOR	2	
QR2003	MUN2112	TRANSISTOR-RESISTOR	1	
QR2004	UN2116	TRANSISTOR-RESISTOR	1	
QR3001	MUN2211	TRANSISTOR-RESISTOR	1	
QR3003	MUN2111	TRANSISTOR-RESISTOR	1	
QR3004	MUN2211	TRANSISTOR-RESISTOR	1	
QR3006-08	MUN2212	TRANSISTOR	3	
QR3009	MUN2111	TRANSISTOR-RESISTOR	1	
QR3011	MUN2212	TRANSISTOR	1	
QR3012	DTC363EK	TRANSISTOR-RESISTOR	1	
QR3013	MUN2211	TRANSISTOR-RESISTOR	1	
QR3015	MUN2212	TRANSISTOR	1	
QR3016,17	MUN2211	TRANSISTOR-RESISTOR	2	
QR3019	MUN2211	TRANSISTOR-RESISTOR	1	
QR3021	MUN2211	TRANSISTOR-RESISTOR	1	
QR3023	UN2213	TRANSISTOR-RESISTOR	1	
QR4001	MUN2211	TRANSISTOR-RESISTOR	1	
QR4002-04	MUN2213	TRANSISTOR-RESISTOR	3	
QR4005	MUN2212	TRANSISTOR	1	
QR4006	MUN2211	TRANSISTOR-RESISTOR	1	
QR4007	MUN2212	TRANSISTOR	1	
QR4008	MUN2211	TRANSISTOR-RESISTOR	1	
QR4508,09	UN5113	TRANSISTOR-RESISTOR	2	
QR4510	UN5212	TRANSISTOR-RESISTOR	1	
QR4602	UN5111	TRANSISTOR-RESISTOR	1	
QR4603	UN5213	TRANSISTOR-RESISTOR	1	
QR6002,03	MUN2211	TRANSISTOR-RESISTOR	2	
QR6006	MUN2212	TRANSISTOR	1	
QR6007	XN1211	TRANSISTOR-RESISTOR	1	
QR6701	UN2216	TRANSISTOR-RESISTOR	1	
QR6702	UN2215	TRANSISTOR-RESISTOR	1	
QR7301	MUN2213	TRANSISTOR-RESISTOR	1	
QR7302	MUN2112	TRANSISTOR-RESISTOR	1	

Ref.No.	Part No.	Part Name & Description	Pcs	Remarks
RO701	ERJ6GEYJ821	M.RESISTOR CH 1/10W 820	1	
RO702	ERJ6GEYJ472	M.RESISTOR CH 1/10W 4.7K	1	
RO703	ERJ6GEYJ561	M.RESISTOR CH 1/10W 560	1	
RO704	ERJ6GEYJ680	M.RESISTOR CH 1/10W 68	1	
RO705	ERJ3GEYJ220	M.RESISTOR CH 1/16W 22	1	
RO706,07	ERJ3GEYJ223	M.RESISTOR CH 1/16W 22K	2	
RO708	ERJ3GEYJ562	M.RESISTOR CH 1/16W 5.6K	1	
RO709,10	ERJ3GEYJ223	M.RESISTOR CH 1/16W 22K	2	
RO711	ERJ3GEYJ562	M.RESISTOR CH 1/16W 5.6K	1	
RO713	ERJ3GEYJ222	M.RESISTOR CH 1/16W 2.2K	1	
RO714	ERJ3GEYJ471	M.RESISTOR CH 1/16W 470	1	
RO715	ERJ3GEYJ223	M.RESISTOR CH 1/16W 22K	1	
RO716	ERJ3GEYJ821	M.RESISTOR CH 1/16W 820	1	
RO717	ERJ3GEYJ392	M.RESISTOR CH 1/16W 3.9K	1	
RO718	ERJ3GEYJ562	M.RESISTOR CH 1/16W 5.6K	1	
RO719	ERJ3GEYJ182	M.RESISTOR CH 1/16W 1.8K	1	
RO720	ERJ3GEYJ102	M.RESISTOR CH 1/16W 1K	1	
RO721,22	ERJ3GEYJ471	M.RESISTOR CH 1/16W 470	2	
RO723	ERJ3GEYJ562	M.RESISTOR CH 1/16W 5.6K	1	
RO724	ERJ8GEYJ151	M.RESISTOR CH 1/8W 150	1	
RO725	VRE0040E471	M.RESISTOR CH 1/10W 470	1	
RO726,27	ERJ3GEYJ101	M.RESISTOR CH 1/16W 100	2	
RO728	ERJ3GEYJ471	M.RESISTOR CH 1/16W 470	1	
RO729	ERJ3GEYJ181	M.RESISTOR CH 1/16W 180	1	
RO730,31	ERJ3GEYJ333	M.RESISTOR CH 1/16W 33K	2	
RO732	ERJ8GEYJ102	M.RESISTOR CH 1/8W 1K	1	
RO733	ERJ3GEYJ563	M.RESISTOR CH 1/16W 56K	1	
RO734	ERJ3GEYJ333	M.RESISTOR CH 1/16W 33K	1	
RO735	ERJ3GEYJ101	M.RESISTOR CH 1/16W 100	1	
RO736,37	ERJ3GEYJ471	M.RESISTOR CH 1/16W 470	2	
RO738	ERJ3GEYJ000	M.RESISTOR CH 1/16W 0	1	
RO740	ERJ3GEYJ000	M.RESISTOR CH 1/16W 0	1	
RO741	ERJ3GEYJ182	M.RESISTOR CH 1/16W 1.8K	1	
RO742	ERJ3GEYJ122	M.RESISTOR CH 1/16W 1.2K	1	
RO743	ERJ3GEYJ822	M.RESISTOR CH 1/16W 8.2K	1	
RO744	ERJ3GEYJ000	M.RESISTOR CH 1/16W 0	1	
RO748	ERJ3GEYJ152	M.RESISTOR CH 1/16W 1.5K	1	
RO749	ERJ3GEYJ103	M.RESISTOR CH 1/16W 10K	1	
RO750	ERJ3GEYJ272	M.RESISTOR CH 1/16W 2.7K	1	
RO751	ERJ3GEYJ271	M.RESISTOR CH 1/16W 270	1	
RO752	ERJ3GEYJ332	M.RESISTOR CH 1/16W 3.3K	1	
RO753	ERDS2TJ684	C.RESISTOR 1/4W 680K	1	
R1001	ERDS1TJ272	C.RESISTOR 1/2W 2.7K	1	
R1002	ERJ6GMJ102	M.RESISTOR CH 1/10W 1K	1	
R1003	ERJ6GMJ472	M.RESISTOR CH 1/10W 4.7K	1	
R1004,05	ERJ6GMJ103	M.RESISTOR CH 1/10W 10K	2	
R1006	ERJ6GMJ473	M.RESISTOR CH 1/10W 47K	1	
R1007	ERJ6GMJ562	M.RESISTOR CH 1/10W 5.6K	1	
R1008	ERJ6GMJ333	M.RESISTOR CH 1/10W 33K	1	
R1009	ERJ6GMJ562	M.RESISTOR CH 1/10W 5.6K	1	
R1010	ERJ6GMJ333	M.RESISTOR CH 1/10W 33K	1	
R1011	ERDS2TJ391	C.RESISTOR 1/4W 390	1	
R1013,14	ERJ6GMJ272	M.RESISTOR CH 1/10W 2.7K	2	
R1015	ERJ6GMJ103	M.RESISTOR CH 1/10W 10K	1	
R1016	ERDS2TJ122	C.RESISTOR 1/4W 1.2K	1	
R1017	ERJ6GMJ181	M.RESISTOR CH 1/10W 180	1	
R1018	ERJ6GMJ102	M.RESISTOR CH 1/10W 1K	1	
R2001	ERJ6GMJ103	M.RESISTOR CH 1/10W 10K	1	
R2002	ERJ6GMJ562	M.RESISTOR CH 1/10W 5.6K	1	
R2003-05	ERJ6GMJ103	M.RESISTOR CH 1/10W 10K	3	
R2006	ERJ6GMJ000	M.RESISTOR CH 1/10W 0	1	
R2007	ERJ6GMJ221	M.RESISTOR CH 1/10W 220	1	
R2008	ERJ6GMJ272	M.RESISTOR CH 1/10W 2.7K	1	
R2009	ERJ6GMJ332	M.RESISTOR CH 1/10W 3.3K	1	
R2010-12	ERJ6GMJ223	M.RESISTOR CH 1/10W 22K	3	
R2013	ERJ6GMJ392	M.RESISTOR CH 1/10W 3.9K	1	
R2014	ERJ6GMJ222	M.RESISTOR CH 1/10W 2.2K	1	
R2015	ERJ6GMJ223	M.RESISTOR CH 1/10W 22K	1	
R2016	ERJ6GMJ103	M.RESISTOR CH 1/10W 10K	1	
R2017	ERJ6GMJ471	M.RESISTOR CH 1/10W 470	1	
R2018	ERJ6GMJ103	M.RESISTOR CH 1/10W 10K	1	
R2019	ERJ6GMJ222	M.RESISTOR CH 1/10W 2.2K	1	
R2020	ERJ6GMJ103	M.RESISTOR CH 1/10W 10K	1	
R2501,02	ERDS2TJ560	C.RESISTOR 1/4W 56	2	

Ref.No.	Part No.	Part Name & Description	Pcs	Remarks	Ref.No.	Part No.	Part Name & Description	Pcs	Remarks
R2503	ERDS1TJ561	C.RESISTOR 1/2W 560	1		R3068	ERJ6GMYJ102	M.RESISTOR CH 1/10W 1K	1	
R2504	ERJ6GMYJ222	M.RESISTOR CH 1/10W 2.2K	1		R3069	ERJ6GMYJ152	M.RESISTOR CH 1/10W 1.5K	1	
R2505	ERJ6GMYG432	M.RESISTOR CH 1/10W 4.3K	1		R3070	ERJ6GMYJ102	M.RESISTOR CH 1/10W 1K	1	
R2506	ERJ6GMYG473	M.RESISTOR CH 1/10W 47K	1		R3072	ERJ6GMYJ102	M.RESISTOR CH 1/10W 1K	1	
R2507,08	ERJ6GMYJ105	M.RESISTOR CH 1/10W 1M	2		R3073	ERJ6GMYJ112	M.RESISTOR CH 1/10W 1.1K	1	
R2509,10	ERJ6GMYJ392	M.RESISTOR CH 1/10W 3.9K	2		R3076	ERJ6GMYJ332	M.RESISTOR CH 1/10W 3.3K	1	
R2511	ERDS2TJ560	C.RESISTOR 1/4W 56	1		R3077	ERJ6GMYJ473	M.RESISTOR CH 1/10W 47K	1	
R2512	ERX12SJR47	M.RESISTOR 1/2W 0.47	1		R3078	ERJ6GMYJ102	M.RESISTOR CH 1/10W 1K	1	
R2514	ERJ6GMYG821	M.RESISTOR CH 1/10W 820	1		R3079	ERJ6GMYJ183	M.RESISTOR CH 1/10W 18K	1	
R2515	ERJ6GMYG681	M.RESISTOR CH 1/10W 680	1		R3080	ERJ6GMYJ203	M.RESISTOR CH 1/10W 20K	1	
R2517	ERJ6GMYJ102	M.RESISTOR CH 1/10W 1K	1		R3082	ERJ6GMYJ102	M.RESISTOR CH 1/10W 1K	1	
R2520	ERJ6GMYJ105	M.RESISTOR CH 1/10W 1M	1		R3085	ERJ6GMYJ152	M.RESISTOR CH 1/10W 1.5K	1	
R2521	ERJ6GMYJ684	M.RESISTOR CH 1/10W 680K	1		R3086	ERJ6GMYJ392	M.RESISTOR CH 1/10W 3.9K	1	
R2522	ERJ6GMYG133	M.RESISTOR CH 1/10W 13K	1		R3087	ERJ6GMYJ222	M.RESISTOR CH 1/10W 2.2K	1	
R2523	ERJ6GMYG103	M.RESISTOR CH 1/10W 10K	1		R3088	ERJ6GMYJ822	M.RESISTOR CH 1/10W 8.2K	1	
R3001	ERJ6GMYJ152	M.RESISTOR CH 1/10W 1.5K	1		R3089	ERJ6GMYJ122	M.RESISTOR CH 1/10W 1.2K	1	
R3002	ERJ6GMYJ272	M.RESISTOR CH 1/10W 2.7K	1		R3090	ERJ6GEYJ222	M.RESISTOR CH 1/10W 2.2K	1	
R3003	ERJ6GMYJ102	M.RESISTOR CH 1/10W 1K	1		R3091	ERJ6GEYJ103	M.RESISTOR CH 1/10W 10K	1	
R3004	ERJ6GMYG102	M.RESISTOR CH 1/10W 1K	1		R3092	ERJ6GMYJ102	M.RESISTOR CH 1/10W 1K	1	
R3005	ERJ6GMYG471	M.RESISTOR CH 1/10W 470	1		R3094	ERJ6GMYJ392	M.RESISTOR CH 1/10W 3.9K	1	
R3006	ERJ6GEYJ102	M.RESISTOR CH 1/10W 1K	1		R3095	ERJ6GMYJ472	M.RESISTOR CH 1/10W 4.7K	1	
R3007	ERJ6GMYG911	M.RESISTOR CH 1/10W 910	1		R4001,02	ERJ6GMYJ392	M.RESISTOR CH 1/10W 3.9K	2	
R3009	ERJ6GMYJ122	M.RESISTOR CH 1/10W 1.2K	1		R4003	ERDS2TJ680	C.RESISTOR 1/4W 68	1	
R3010	ERJ6GMYJ332	M.RESISTOR CH 1/10W 3.3K	1		R4004,05	ERJ6GMYJ103	M.RESISTOR CH 1/10W 10K	2	
R3011	ERJ6GMYJ122	M.RESISTOR CH 1/10W 1.2K	1		R4006	ERDS2TJ680	C.RESISTOR 1/4W 68	1	
R3012,13	ERJ6GMYJ102	M.RESISTOR CH 1/10W 1K	2		R4007	ERJ6GMYJ103	M.RESISTOR CH 1/10W 10K	1	
R3014	ERJ6GMYJ821	M.RESISTOR CH 1/10W 820	1		R4009	ERDS2TJ221	C.RESISTOR 1/4W 220	1	
R3015	ERJ6GMYJ102	M.RESISTOR CH 1/10W 1K	1		R4010	ERJ6GMYJ332	M.RESISTOR CH 1/10W 3.3K	1	
R3016	ERJ6GMYJ471	M.RESISTOR CH 1/10W 470	1		R4011,12	ERJ6GMYJ393	M.RESISTOR CH 1/10W 39K	2	
R3017	ERJ6GMYJ821	M.RESISTOR CH 1/10W 820	1		R4013	ERG2SJ681	M.RESISTOR 2W 680	1	
R3018	ERJ6GMYJ391	M.RESISTOR CH 1/10W 390	1		R4014	ERG1SJ122	M.RESISTOR 1W 1.2K	1	
R3019	ERJ6GMYJ681	M.RESISTOR CH 1/10W 680	1		R4015	ERJ6GMYG100	M.RESISTOR CH 1/10W 10	1	
R3021	ERJ6GMYJ223	M.RESISTOR CH 1/10W 22K	1		R4016,17	ERJ6GMYJ562	M.RESISTOR CH 1/10W 5.6K	2	
R3022	ERJ6GMYJ472	M.RESISTOR CH 1/10W 4.7K	1		R4018	ERJ6GMYJ471	M.RESISTOR CH 1/10W 470	1	
R3023	ERJ6GMYJ103	M.RESISTOR CH 1/10W 10K	1		R4019,20	ERJ6GMYJ103	M.RESISTOR CH 1/10W 10K	2	
R3024	ERJ6GMYJ102	M.RESISTOR CH 1/10W 1K	1		R4021	ERJ6GMYJ471	M.RESISTOR CH 1/10W 470	1	
R3025	ERJ6GMYJ682	M.RESISTOR CH 1/10W 6.8K	1		R4022	ERJ6GMYJ392	M.RESISTOR CH 1/10W 3.9K	1	
R3026,27	ERJ6GMYJ681	M.RESISTOR CH 1/10W 680	2		R4023	ERJ6GMYJ562	M.RESISTOR CH 1/10W 5.6K	1	
R3028	ERJ6GMYJ182	M.RESISTOR CH 1/10W 1.8K	1		R4024	ERJ6GMYJ273	M.RESISTOR CH 1/10W 27K	1	
R3029	ERJ6GMYJ561	M.RESISTOR CH 1/10W 560	1		R4025	ERJ6GMYJ333	M.RESISTOR CH 1/10W 33K	1	
R3030	ERJ6GMYJ102	M.RESISTOR CH 1/10W 1K	1		R4026	ERJ6GMYJ273	M.RESISTOR CH 1/10W 27K	1	
R3031	ERJ6GMYJ222	M.RESISTOR CH 1/10W 2.2K	1		R4027	ERJ6GMYJ333	M.RESISTOR CH 1/10W 33K	1	
R3032	ERJ6GMYJ681	M.RESISTOR CH 1/10W 680	1		R4038	ERJ6GMYJ153	M.RESISTOR CH 1/10W 15K	1	
R3033	ERJ6GMYJ472	M.RESISTOR CH 1/10W 4.7K	1		R4039	ERJ6GMYJ223	M.RESISTOR CH 1/10W 22K	1	
R3034	ERJ6GMYJ102	M.RESISTOR CH 1/10W 1K	1		R4040	ERJ6GMYJ153	M.RESISTOR CH 1/10W 15K	1	
R3035	ERJ6GMYJ103	M.RESISTOR CH 1/10W 10K	1		R4041,42	ERJ6GMYJ332	M.RESISTOR CH 1/10W 3.3K	2	
R3036	ERJ6GMYG123	M.RESISTOR CH 1/10W 12K	1		R4047	ERJ6GMYJ103	M.RESISTOR CH 1/10W 10K	1	
R3037	ERJ6GMYG512	M.RESISTOR CH 1/10W 5.1K	1		R4048	ERJ6GMYJ471	M.RESISTOR CH 1/10W 470	1	
R3038	ERJ6GMYG272	M.RESISTOR CH 1/10W 2.7K	1		R4049	ERJ6GMYJ821	M.RESISTOR CH 1/10W 820	1	
R3039	ERJ6GMYG302	M.RESISTOR CH 1/10W 3K	1		R4050	ERJ6GMYJ153	M.RESISTOR CH 1/10W 15K	1	
R3040	ERJ6GMYJ102	M.RESISTOR CH 1/10W 1K	1		R4051	ERJ6GMYJ332	M.RESISTOR CH 1/10W 3.3K	1	
R3041	ERJ6GMYG821	M.RESISTOR CH 1/10W 820	1		R4052	ERJ6GMYJ103	M.RESISTOR CH 1/10W 10K	1	
R3042,43	ERJ6GMYJ102	M.RESISTOR CH 1/10W 1K	2		R4053	ERG1SJ680	M.RESISTOR 1W 68	1	
R3044	ERJ6GMYJ681	M.RESISTOR CH 1/10W 680	1		R4054	ERJ6GMYJ333	M.RESISTOR CH 1/10W 33K	1	
R3045	ERJ6GMYJ272	M.RESISTOR CH 1/10W 2.7K	1		R4501,02	ERJ3GEYOR00	M.RESISTOR CH 1/16W 0	2	
R3046	ERJ6GMYG622	M.RESISTOR CH 1/10W 6.2K	1		R4503	ERJ3GEYG223	M.RESISTOR CH 1/16W 22K	1	
R3047	ERJ6GMYG752	M.RESISTOR CH 1/10W 7.5K	1		R4504,05	ERJ3GEYJ393	M.RESISTOR CH 1/16W 39K	2	
R3048	ERJ6GMYG562	M.RESISTOR CH 1/10W 5.6K	1		R4506,07	ERJ3GEYJ473	M.RESISTOR CH 1/16W 47K	2	
R3049	ERJ6GMYG512	M.RESISTOR CH 1/10W 5.1K	1		R4508	ERJ3GEYG224	M.RESISTOR CH 1/16W 220K	1	
R3050	ERJ6GMYG332	M.RESISTOR CH 1/10W 3.3K	1		R4509	ERJ3GEYJ622	M.RESISTOR CH 1/16W 6.2K	1	
R3051	ERJ6GMYG562	M.RESISTOR CH 1/10W 5.6K	1		R4511	ERJ3GEYG273	M.RESISTOR CH 1/16W 27K	1	
R3052	ERJ6GMYJ562	M.RESISTOR CH 1/10W 5.6K	1		R4512	VRE0071E163	M.RESISTOR CH 1/10W 16K	1	
R3053	ERJ6GMYJ683	M.RESISTOR CH 1/10W 68K	1		R4513	ERJ3GEYG103	M.RESISTOR CH 1/16W 10K	1	
R3054	ERJ6GMYJ103	M.RESISTOR CH 1/10W 10K	1		R4514,15	ERJ3GEYJ223	M.RESISTOR CH 1/16W 22K	2	
R3055	ERJ6GMYJ332	M.RESISTOR CH 1/10W 3.3K	1		R4518,19	ERJ3GEYOR00	M.RESISTOR CH 1/16W 0	2	
R3056	ERJ6GMYJ102	M.RESISTOR CH 1/10W 1K	1		R4522	ERJ3GEYJ225	M.RESISTOR CH 1/16W 2.2M	1	
R3057	ERJ6GMYJ103	M.RESISTOR CH 1/10W 10K	1		R4527	VRE0071E333	M.RESISTOR 33K	1	
R3058	ERJ6GMYJ102	M.RESISTOR CH 1/10W 1K	1		R4528	VRE0071E153	M.RESISTOR 15K	1	
R3059	ERJ6GMYJ472	M.RESISTOR CH 1/10W 4.7K	1		R4529	ERJ3GEYG562	M.RESISTOR CH 1/16W 5.6K	1	
R3060	ERJ6GMYJ473	M.RESISTOR CH 1/10W 47K	1		R4530	ERJ3GEYJ334	M.RESISTOR CH 1/16W 330K	1	
R3061	ERJ6GMYJ123	M.RESISTOR CH 1/10W 12K	1		R4534	ERJ3GEYJ472	M.RESISTOR CH 1/16W 4.7K	1	
R3062	ERJ6GMYJ183	M.RESISTOR CH 1/10W 18K	1		R4535	ERJ3GEYJ104	M.RESISTOR CH 1/16W 100K	1	
R3063	ERJ6GMYJ103	M.RESISTOR CH 1/10W 10K	1		R4539	ERJ3GEYJ104	M.RESISTOR CH 1/16W 100K	1	
R3064,65	ERJ6GMYJ102	M.RESISTOR CH 1/10W 1K	2		R4541	ERJ3GEYJ152	M.RESISTOR CH 1/16W 1.5K	1	
R3066	ERJ6GMYJ332	M.RESISTOR CH 1/10W 3.3K	1		R4542	ERJ3GEYJ222	M.RESISTOR CH 1/16W 2.2K	1	

Ref.No.	Part No.	Part Name & Description	Pcs	Remarks
R4543	ERJ3GEYJ472	M.RESISTOR CH 1/16W 4.7K	1	
R4551,52	ERJ3GEYJ393	M.RESISTOR CH 1/16W 39K	2	
R4553,54	ERJ3GEYJ273	M.RESISTOR CH 1/16W 27K	2	
R4558	ERJ3GEYG224	M.RESISTOR CH 1/16W 220K	1	
R4561	ERJ3GEYG273	M.RESISTOR CH 1/16W 27K	1	
R4562	VRE0034E10C	M.RESISTOR CH 1/10W	1	
R4563	ERJ3GEYG272	M.RESISTOR CH 1/16W 2.7K	1	
R4568,69	ERJ3GEYJ273	M.RESISTOR CH 1/16W 27K	2	
R4573	ERJ3GEYJ152	M.RESISTOR CH 1/16W 1.5K	1	
R4577	ERJ3GEYJ473	M.RESISTOR CH 1/16W 47K	1	
R4578	VRE0071E473	M.RESISTOR CH 1/10W 47K	1	
R4581	ERJ3GEYJ104	M.RESISTOR CH 1/16W 100K	1	
R4583	ERJ3GEYJ102	M.RESISTOR CH 1/16W 1K	1	
R4584	ERJ3GEYJ152	M.RESISTOR CH 1/16W 1.5K	1	
R4585	ERJ3GEY0R00	M.RESISTOR CH 1/16W 0	1	
R4586	ERJ3GEYJ152	M.RESISTOR CH 1/16W 1.5K	1	
R4587,88	ERJ3GEYJ273	M.RESISTOR CH 1/16W 27K	2	
R4591	ERJ3GEYJ473	M.RESISTOR CH 1/16W 47K	1	
R4592	ERJ3GEYJ563	M.RESISTOR CH 1/16W 56K	1	
R4593	ERJ3GEYJ472	M.RESISTOR CH 1/16W 4.7K	1	
R4594	ERJ3GEYJ473	M.RESISTOR CH 1/16W 47K	1	
R4596	ERJ3GEYJ473	M.RESISTOR CH 1/16W 47K	1	
R4597	ERJ3GEYJ103	M.RESISTOR CH 1/16W 10K	1	
R4598,99	ERJ3GEYG104	M.RESISTOR CH 1/16W 100K	2	
R4603	ERJ3GEYGLB3	M.RESISTOR CH 1/16W 18K	1	
R4606	ERJ3GEYJ562	M.RESISTOR CH 1/16W 5.6K	1	
R4610	ERJ3GEYJ473	M.RESISTOR CH 1/16W 47K	1	
R4611	ERJ3GEYJ101	M.RESISTOR CH 1/16W 100	1	
R4612	ERJ3GEYJ331	M.RESISTOR CH 1/16W 33K	1	
R4613	ERJ3GEYJ394	M.RESISTOR CH 1/16W 390K	1	
R4615	ERJ3GEYJ133	M.RESISTOR CH 1/16W 13K	1	
R4616	ERJ3GEYJ105	M.RESISTOR CH 1/16W 1M	1	
R4638	ERJ3GEY0R00	M.RESISTOR CH 1/16W 0	1	
R4649	ERJ3GEYJ470	M.RESISTOR CH 1/16W 47	1	
R4651	ERJ3GEYJ101	M.RESISTOR CH 1/16W 100	1	
R4652	ERJ3GEYJ223	M.RESISTOR CH 1/16W 22K	1	
R4653	ERJ3GEYJ221	M.RESISTOR CH 1/16W 22K	1	
R4654	ERJ3GEYJ223	M.RESISTOR CH 1/16W 22K	1	
R4655	ERJ3GEYJ562	M.RESISTOR CH 1/16W 5.6K	1	
R4656	ERJ3GEYJ243	M.RESISTOR CH 1/16W 24K	1	
R4657	ERJ3GEYJ392	M.RESISTOR CH 1/16W 3.9K	1	
R4666	ERJ3GEYJ471	M.RESISTOR CH 1/16W 47K	1	
R4671	ERJ3GEYJ103	M.RESISTOR CH 1/16W 10K	1	
R6001	ERJ6GMZ0R00	M.RESISTOR CH 1/10W 0	1	
R6003	ERJ6GMJ102	M.RESISTOR CH 1/10W 1K	1	
R6006	ERJ6GMZ0R00	M.RESISTOR CH 1/10W 0	1	
R6007	ERJ6GMJ104	M.RESISTOR CH 1/10W 100K	1	
R6008	ERJ6GMZ0R00	M.RESISTOR CH 1/10W 0	1	
R6009	ERJ6GMJ101	M.RESISTOR CH 1/10W 100	1	
R6012	ERJ6GMJ222	M.RESISTOR CH 1/10W 2.2K	1	
R6013	ERJ6GMJ103	M.RESISTOR CH 1/10W 10K	1	
R6014	ERJ6GMJ474	M.RESISTOR CH 1/10W 470K	1	
R6015,16	ERJ6GMJ102	M.RESISTOR CH 1/10W 1K	2	
R6017,18	ERJ6GMJ103	M.RESISTOR CH 1/10W 10K	2	
R6019,20	ERJ6GMJ102	M.RESISTOR CH 1/10W 1K	2	
R6021	ERJ6GMJ101	M.RESISTOR CH 1/10W 100	1	
R6022	ERJ6GMJ103	M.RESISTOR CH 1/10W 10K	1	
R6024-26	ERJ6GMJ102	M.RESISTOR CH 1/10W 1K	3	
R6027,28	ERJ6GMZ0R00	M.RESISTOR CH 1/10W 0	2	
R6029,30	ERJ6GMJ103	M.RESISTOR CH 1/10W 10K	2	
R6033	ERJ6GMJ472	M.RESISTOR CH 1/10W 4.7K	1	
R6034	ERJ6GMJ183	M.RESISTOR CH 1/10W 18K	1	
R6035,36	ERJ6GMJ102	M.RESISTOR CH 1/10W 1K	2	
R6037,38	ERJ6GMJ272	M.RESISTOR CH 1/10W 2.7K	2	
R6040,41	ERJ6GMJ221	M.RESISTOR CH 1/10W 22K	2	
R6043	ERJ6GMJ272	M.RESISTOR CH 1/10W 2.7K	1	
R6044	ERJ6GMJ102	M.RESISTOR CH 1/10W 1K	1	
R6046,47	ERJ6GMJ221	M.RESISTOR CH 1/10W 22K	2	
R6048	ERJ6GMJ223	M.RESISTOR CH 1/10W 22K	1	
R6049	ERJ6GMJ333	M.RESISTOR CH 1/10W 33K	1	
R6050	ERJ6GMJ272	M.RESISTOR CH 1/10W 2.7K	1	
R6051,52	ERJ6GMJ333	M.RESISTOR CH 1/10W 33K	2	
R6053	ERJ6GMJ223	M.RESISTOR CH 1/10W 22K	1	
R6054	ERJ6GMJ201	M.RESISTOR CH 1/10W 20K	1	
R6055	ERJ6GMJ272	M.RESISTOR CH 1/10W 2.7K	1	

Ref.No.	Part No.	Part Name & Description	Pcs	Remarks
R6056,57	ERJ6GMJ102	M.RESISTOR CH 1/10W 1K	2	
R6058	ERDS2TJ102	C.RESISTOR 1/4W 1K	1	
R6059	ERX1S1R8	M.RESISTOR 1W 1.8	1	
R6060	ERJ6GMJG512	M.RESISTOR CH 1/10W 5.1K	1	
R6061	ERJ6GMJG913	M.RESISTOR CH 1/10W 91K	1	
R6062	ERJ6GMJG272	M.RESISTOR CH 1/10W 2.7K	1	
R6063	ERJ6GMJ102	M.RESISTOR CH 1/10W 1K	1	
R6064	ERDS2TJ271	C.RESISTOR 1/4W 27K	1	
R6065,66	ERJ6GMJG683	M.RESISTOR CH 1/10W 68K	2	
R6067	ERJ6GMJ223	M.RESISTOR CH 1/10W 22K	1	
R6068	ERJ6GMJ224	M.RESISTOR CH 1/10W 220K	1	
R6069	ERJ6GMJ104	M.RESISTOR CH 1/10W 100K	1	
R6070	ERJ6GMJ822	M.RESISTOR CH 1/10W 8.2K	1	
R6071	ERJ6GMJ243	M.RESISTOR CH 1/10W 24K	1	
R6072	ERJ6GMZ0R00	M.RESISTOR CH 1/10W 0	1	
R6074	ERJ6GMZ0R00	M.RESISTOR CH 1/10W 0	1	
R6701	ERJ6GMJ472	M.RESISTOR CH 1/10W 4.7K	1	
R6702	ERJ6GMJ102	M.RESISTOR CH 1/10W 1K	1	
R6703-05	ERJ6GMJ472	M.RESISTOR CH 1/10W 4.7K	3	
R6706,07	ERJ6GMJ221	M.RESISTOR CH 1/10W 22K	2	
R6708	ERJ6GMJ471	M.RESISTOR CH 1/10W 47K	1	
R6709	ERJ6GMJ511	M.RESISTOR CH 1/10W 51K	1	
R6710	ERJ6GMJ224	M.RESISTOR CH 1/10W 220K	1	
R6711	ERJ6GMJ472	M.RESISTOR CH 1/10W 4.7K	1	
R6712	ERJ6GMJ102	M.RESISTOR CH 1/10W 1K	1	
R6713	ERJ6GMJ273	M.RESISTOR CH 1/10W 27K	1	
R6715	ERJ6GMJ472	M.RESISTOR CH 1/10W 4.7K	1	
R6716	ERJ6GMJ682	M.RESISTOR CH 1/10W 6.8K	1	
R6718	ERJ6GMJ103	M.RESISTOR CH 1/10W 10K	1	
R6723	ERJ6GMJ332	M.RESISTOR CH 1/10W 3.3K	1	
R6724-26	ERJ6GMJ471	M.RESISTOR CH 1/10W 47K	3	
R6727	ERJ6GMJ222	M.RESISTOR CH 1/10W 2.2K	1	
R6728	ERJ6GMJ102	M.RESISTOR CH 1/10W 1K	1	
R6730	ERJ6GMJ105	M.RESISTOR CH 1/10W 1M	1	
R6731	ERJ6GMJ392	M.RESISTOR CH 1/10W 3.9K	1	
R6732,33	ERJ6GMJ105	M.RESISTOR CH 1/10W 1M	2	
R6734	ERJ6GMJ104	M.RESISTOR CH 1/10W 100K	1	
R6735,36	ERJ6GMJ103	M.RESISTOR CH 1/10W 10K	2	
R6737	ERJ6GMJ102	M.RESISTOR CH 1/10W 1K	1	
R6738	ERJ6GMJ101	M.RESISTOR CH 1/10W 100	1	
R6739	ERJ6GMJ182	M.RESISTOR CH 1/10W 1.8K	1	
R6740-47	ERJ6GEYJ101	M.RESISTOR CH 1/10W 100	8	
R6748	ERJ6GMJ122	M.RESISTOR CH 1/10W 1.2K	1	
R6749	ERJ6GMZ0R00	M.RESISTOR CH 1/10W 0	1	
R6750	ERJ6GEXJ101	M.RESISTOR CH 1/10W 100	1	
R6751	ERJ6GMJ101	M.RESISTOR CH 1/10W 100	1	
R7301	ERJ6GEYJ182	M.RESISTOR CH 1/10W 1.8K	1	
R7302	ERJ3GEYJ472	M.RESISTOR CH 1/16W 4.7K	1	
R7303	ERJ3GEYJ152	M.RESISTOR CH 1/16W 1.5K	1	
R7304	ERJ3GEYJ121	M.RESISTOR CH 1/16W 12K	1	
R7305	ERJ6GEYJ181	M.RESISTOR CH 1/10W 18K	1	
R7306	ERJ6GEYJ561	M.RESISTOR CH 1/10W 56K	1	
R7308	ERJ3GEYJ121	M.RESISTOR CH 1/16W 12K	1	
R7309,10	ERJ6GEYJ561	M.RESISTOR CH 1/10W 56K	2	
R7311	ERJ6GEYJ221	M.RESISTOR CH 1/10W 22K	1	
R7312	ERJ6GEYJ152	M.RESISTOR CH 1/10W 1.5K	1	
R7313,14	ERJ3GEYG272	M.RESISTOR CH 1/16W 2.7K	2	
R7315	ERJ3GEYJ114	M.RESISTOR CH 1/16W 11K	1	
R7316	ERJ3GEYJ223	M.RESISTOR CH 1/16W 22K	1	
R7317	ERJ3GEYJ473	M.RESISTOR CH 1/16W 47K	1	
R7326	ERJ3GEYJ104	M.RESISTOR CH 1/16W 100K	1	
R7327-29	ERJ3GEYJ333	M.RESISTOR CH 1/16W 33K	3	
R7330	ERJ3GEY0R00	M.RESISTOR CH 1/16W 0	1	
R7332	ERJ3GEYJ102	M.RESISTOR CH 1/16W 1K	1	
R7333	ERJ3GEYJ104	M.RESISTOR CH 1/16W 100K	1	
R7334-36	ERJ3GEYJ333	M.RESISTOR CH 1/16W 33K	3	
R7337	ERJ3GEY0R00	M.RESISTOR CH 1/16W 0	1	
R7339	ERJ3GEYJ102	M.RESISTOR CH 1/16W 1K	1	
R7341-43	ERJ6GEYJ471	M.RESISTOR CH 1/10W 47K	3	
R7344	ERJ3GEYJ102	M.RESISTOR CH 1/16W 1K	1	
R7346	ERJ3GEYJ473	M.RESISTOR CH 1/16W 47K	1	
R7350	ERJ3GEYJ102	M.RESISTOR CH 1/16W 1K	1	
R7351	ERJ3GEYJ473	M.RESISTOR CH 1/16W 47K	1	
R7352-56	ERJ3GEYJ103	M.RESISTOR CH 1/16W 10K	5	
R7357	ERJ3GEYJ472	M.RESISTOR CH 1/16W 4.7K	1	

Ref.No.	Part No.	Part Name & Description	Pcs	Remarks	Ref.No.	Part No.	Part Name & Description	Pcs	Remarks
C849	ECUM1H1032FN	C. CAPACITOR CH 50V 0.01U	1		L804-06	VLQ0633J680	COIL 68UH	3	
C850	ECEA1HKA0R1	E. CAPACITOR 50V 0.1U	1		L807	VLQ0633J470	COIL 37UH	1	
C851-53	ECUM1H1032FN	C. CAPACITOR CH 50V 0.01U	3		L808	VLQ0633J120	COIL 12UH	1	
C854	ECEA1CKA100	E. CAPACITOR 16V 10U	1		L809	VLQ0633J680	COIL 68UH	1	
C855	ECUM1H121JCN	C. CAPACITOR CH 50V 120P	1		L810	VLQ0633J150	COIL 15UH	1	
C856	ECUM1H1032FN	C. CAPACITOR CH 50V 0.01U	1		L811	VLQ0633J151	COIL 150UH	1	
C857	ECUM1H1042FN	C. CAPACITOR CH 50V 0.1U	1		L812	VLQ0633J270	COIL 27UH	1	
C858	ECUM1H1032FN	C. CAPACITOR CH 50V 0.01U	1		L813, 14	VLQ0633J150	COIL 15UH	2	
C859	ECEAOJKA470	E. CAPACITOR 6.3V 47U	1		L815, 16	VLQ0633J680	COIL 68UH	2	
C860	ECUM1H1042FN	C. CAPACITOR CH 50V 0.1U	1		L817	VLQ0633J101	COIL 100UH	1	
C861	ECUM1H1032FN	C. CAPACITOR CH 50V 0.01U	1		L819	VLQ0633J680	COIL 68UH	1	
C862	ECUM1H1042FN	C. CAPACITOR CH 50V 0.1U	1		L821	VLQ0633J680	COIL 68UH	1	
C863	ECUM1H270JCN	C. CAPACITOR CH 50V 27P	1		L822, 23	VLP0147	FILTER	2	
C864	ECEAOJKA470	E. CAPACITOR 6.3V 47U	1						
C865	ECUM1H1032FN	C. CAPACITOR CH 50V 0.01U	1						
C866	ECUM1H101JCN	C. CAPACITOR CH 50V 100P	1		P301	VJP1246T	CONNECTOR (MALE) 6P	1	
C867	ECUM1H561JCN	C. CAPACITOR CH 50V 560P	1		P302	VJP1244T	CONNECTOR (MALE) 4P	1	
C868	ECEA1HKAR47	E. CAPACITOR 50V 0.47U	1						
C869	ECQB1H472JF	P. CAPACITOR 50V 4700P	1						
C870	ECUM1H1032FN	C. CAPACITOR CH 50V 0.01U	1		PS301	VJS3043F014W	CONNECTOR (FEMALE) 14P	1	
C873	ECUM1H180JCN	C. CAPACITOR CH 50V 18P	1		PS302	VJS3043B012W	CONNECTOR (FEMALE) 12P	1	
C874	ECUM1H271JCN	C. CAPACITOR CH 50V 270P	1		PS303	VJS3043B013W	CONNECTOR (FEMALE) 13P	1	
C875	ECUM1H101JCN	C. CAPACITOR CH 50V 100P	1		PS801	VJS3042B020W	CONNECTOR (FEMALE) 20P	1	
C876-78	ECUM1H1032FN	C. CAPACITOR CH 50V 0.01U	3		PS802	VJS3042F016W	CONNECTOR (FEMALE) 16P	1	
C879	ECEAOJKA101	E. CAPACITOR 6.3V 100U	1						
C881	ECUM1H1032FN	C. CAPACITOR CH 50V 0.01U	1						
C883	ECEAOJKA470	E. CAPACITOR 6.3V 47U	1						
C887	ECUM1H1032FN	C. CAPACITOR CH 50V 0.01U	1						
D301	1SS263	DIODE	1		Q301	MSC2295	TRANSISTOR	1	
D302	MA151K	DIODE	1		Q302	MSB709	TRANSISTOR	1	
D305-07	MA151K	DIODE	3		Q303, 04	MSC2295	TRANSISTOR	2	
D308	MA723VT	DIODE	1		Q305	MSD601	TRANSISTOR	1	
DB01, 02	MA151K	DIODE	2		Q306	MSC2295	TRANSISTOR	1	
DB04	MA151K	DIODE	1		Q308	MSB709	TRANSISTOR	1	
DB07	MA151K	DIODE	1		Q309, 10	MSD601	TRANSISTOR	2	
DB08	MA151WK	DIODE	1		Q311	MSB709	TRANSISTOR	1	
DB10	MA151K	DIODE	1		Q312	MSC2295	TRANSISTOR	1	
DB12, 13	MA151WK	DIODE	2		QB03, 04	MSC2295	TRANSISTOR	2	
DB14	MA151K	DIODE	1						
DL802	EFDVR645A45A	DELAY LINE	1		QR301	MUN2211	TRANSISTOR-RESISTOR	1	
DL803	VLD0147	DELAY LINE	1		QR302	MUN2212	TRANSISTOR	1	
					QR303	MUN2213	TRANSISTOR-RESISTOR	1	
FL301	ELB4M022	FILTER	1		QR304	MUN2211	TRANSISTOR-RESISTOR	1	
FL302	VLFO639	FILTER	1		QR305	MUN2113	TRANSISTOR-RESISTOR	1	
FL303	VLFO786	FILTER	1		QR306	MUN2211	TRANSISTOR-RESISTOR	1	
FL304	ELB4R042	FILTER	1		QR308	MUN2213	TRANSISTOR-RESISTOR	1	
FL801	VLFO1079	FILTER	1		QR309	MUN2211	TRANSISTOR-RESISTOR	1	
FL852	VLFO143	FILTER	1		QR310	MUN2213	TRANSISTOR-RESISTOR	1	
					QR311	MUN2113	TRANSISTOR-RESISTOR	1	
					QR312	UN211D	TRANSISTOR-RESISTOR	1	
IC301	VCR0390	IC	1		QR313, 14	MUN2213	TRANSISTOR-RESISTOR	2	
IC302	MN3859S	IC	1		QR315	MUN2113	TRANSISTOR-RESISTOR	1	
IC303	AN1358S	IC	1		QR316	MUN2213	TRANSISTOR-RESISTOR	1	
IC304	M52055FP	IC	1		QR320-23	MUN2213	TRANSISTOR-RESISTOR	4	
IC801	VCR0383	IC	1		QR801, 02	MUN2213	TRANSISTOR-RESISTOR	2	
IC802	M52352FP	IC	1		QR803	MUN2212	TRANSISTOR	1	
IC803	TA1225N	IC	1		QR804	MUN2211	TRANSISTOR-RESISTOR	1	
IC804	BA7207S	IC	1		QR805	MUN2213	TRANSISTOR-RESISTOR	1	
IC805	BA7025L	IC	1		QR806	MUN2211	TRANSISTOR-RESISTOR	1	
					QR808	MUN2211	TRANSISTOR-RESISTOR	1	
L302	VLQ0633J180	COIL 18UH	1		R301	ERJ6QMYJ222	M.RESISTOR CH 1/10W 2.2K	1	
L304	VLQ0633J270	COIL 27UH	1		R302	ERJ6QMYJ102	M.RESISTOR CH 1/10W 1K	1	
L306	VLQ0633J390	COIL 39UH	1		R303	ERJ6QMYJ562	M.RESISTOR CH 1/10W 5.6K	1	
L309	VLQ0633J680	COIL 68UH	1		R304	ERJ6QMYJ102	M.RESISTOR CH 1/10W 1K	1	
L311	VLQ0633J680	COIL 68UH	1		R305	ERJ6QMYJ122	M.RESISTOR CH 1/10W 1.2K	1	
L312	VLQ0633J330	COIL 33UH	1		R306	ERJ6QMYJ102	M.RESISTOR CH 1/10W 1K	1	
L314	VLQ0599J560	COIL 56UH	1		R307	ERJ6QMYJ562	M.RESISTOR CH 1/10W 5.6K	1	
L801, 02	ELESE681KA	COIL 680UH	2		R308	ERJ6QMYJ104	M.RESISTOR CH 1/10W 100K	1	
L803	ELESE331KA	COIL 330UH	1		R309	ERJ6QMYJ471	M.RESISTOR CH 1/10W 470	1	
					R312	ERJ6QMYJ152	M.RESISTOR CH 1/10W 1.5K	1	
					R313	ERJ6QMYJ821	M.RESISTOR CH 1/10W 820	1	
					R314	ERJ6QMYJ103	M.RESISTOR CH 1/10W 10K	1	
					R315	ERJ6QMYJ152	M.RESISTOR CH 1/10W 1.5K	1	
					R316	ERJ6QMYJ472	M.RESISTOR CH 1/10W 4.7K	1	

Ref.No.	Part No.	Part Name & Description	Pcs	Remarks	Ref.No.	Part No.	Part Name & Description	Pcs	Remarks
QR8002,03	MUN2113	TRANSISTOR-RESISTOR	2		R8092	ERJ6GMYJ223	M.RESISTOR CH 1/10W 22K	1	
QR8004-06	MUN2213	TRANSISTOR-RESISTOR	3						
QR8007	MUN2112	TRANSISTOR-RESISTOR	1		T8001	ELM7Q207A	COIL	1	
QR8008	MUN2213	TRANSISTOR-RESISTOR	1						
QR8009	MUN2211	TRANSISTOR-RESISTOR	1		VC8001,02	ECRHA030E54	TRIMMER 3P	2	
QR8010,11	MUN2113	TRANSISTOR-RESISTOR	2						
QR8012	MUN2112	TRANSISTOR-RESISTOR	1		VR8001	EVMEASAO0B24	V.RESISTOR 20K	1	
QR8013	MUN2113	TRANSISTOR-RESISTOR	1		VR8002	EVNCYAA03B23	V.RESISTOR 2K	1	
QR8016	UN2213	TRANSISTOR-RESISTOR	1		VR8003	EVMEASAO0B13	V.RESISTOR 1K	1	
					VR8004	EVNCYAA03B53	V.RESISTOR 5K	1	
R8001	ERJ6GMYJ223	M.RESISTOR CH 1/10W 22K	1		VR8005	EVMEASAO0B52	V.RESISTOR 500	1	
R8002	ERJ6GMYG203	M.RESISTOR CH 1/10W 20K	1		VR8006	EVNCBAA00B53	V.RESISTOR 5K	1	
R8003	ERJ6GMYJ223	M.RESISTOR CH 1/10W 22K	1		VR8007	EVMEASAO0B53	V.RESISTOR 5K	1	
R8004	ERJ6GMYJ822	M.RESISTOR CH 1/10W 8.2K	1						
R8005	ERJ6GMYJ562	M.RESISTOR CH 1/10W 5.6K	1		X8001	VXS0066	CRYSTAL OSCILLATOR	1	
R8006	ERJ6GMYJ102	M.RESISTOR CH 1/10W 1K	1		X8002	VXS0225	CRYSTAL OSCILLATOR	1	
R8007	ERJ6GMYJ182	M.RESISTOR CH 1/10W 1.8K	1		X8003	VXS0807	CRYSTAL OSCILLATOR	1	
R8008	ERJ6GMYJ223	M.RESISTOR CH 1/10W 22K	1						
R8009	ERJ6GMYJ562	M.RESISTOR CH 1/10W 5.6K	1		ZB8001,02	VMIO199	C.B.A. SPACER	2	
R8010	ERJ6GMYJ104	M.RESISTOR CH 1/10W 100K	1						
R8011	ERJ6GMYG123	M.RESISTOR CH 1/10W 12K	1						
R8012	ERJ6GMYJ124	M.RESISTOR CH 1/10W 120K	1						
R8013	ERJ6GMYJ562	M.RESISTOR CH 1/10W 5.6K	1						
R8014	ERJ6GMYJ332	M.RESISTOR CH 1/10W 3.3K	1						
R8015	ERJ6GMYJ103	M.RESISTOR CH 1/10W 10K	1						
R8016	ERJ6GMYJ223	M.RESISTOR CH 1/10W 22K	1						
R8017	ERJ6GMYJ101	M.RESISTOR CH 1/10W 100	1			■ VEPO7808B	TIMER C.B.A.		(RTL)
R8018	ERJ6GMYJ392	M.RESISTOR CH 1/10W 3.9K	1						
R8019	ERJ6GMYJ682	M.RESISTOR CH 1/10W 6.8K	1						
R8020	ERJ6GMYG103	M.RESISTOR CH 1/10W 10K	1		C7501	ECUM1H101JCN	C.CAPACITOR CH 50V 100P	1	
R8022	ERJ6GMYJ122	M.RESISTOR CH 1/10W 1.2K	1		C7504	ECUM1H103ZFN	C.CAPACITOR CH 50V 0.01U	1	
R8023	ERJ6GMYJ683	M.RESISTOR CH 1/10W 68K	1		C7505	ECUM1H221JCN	C.CAPACITOR CH 50V 220P	1	
R8024	ERJ6GMYJ472	M.RESISTOR CH 1/10W 4.7K	1		C7506	ECUM1H101JCN	C.CAPACITOR CH 50V 100P	1	
R8025	ERJ6GMYJ562	M.RESISTOR CH 1/10W 5.6K	1		C7507	ECEAOJKS470	E.CAPACITOR 6.3V 47U	1	
R8026	ERJ6GMYJ122	M.RESISTOR CH 1/10W 1.2K	1		C7508	ECUM1H104ZFN	C.CAPACITOR CH 50V 0.1U	1	
R8027	ERJ6GMYJ471	M.RESISTOR CH 1/10W 470	1		C7509	ECEAIHKS100	E.CAPACITOR 50V 10U	1	
R8028	ERJ6GMYJ683	M.RESISTOR CH 1/10W 68K	1		C7510	ECUM1H103ZFN	C.CAPACITOR CH 50V 0.01U	1	
R8029	ERJ6GMYJ183	M.RESISTOR CH 1/10W 18K	1		C7511	ECUM1H560JCN	C.CAPACITOR CH 50V 56P	1	
R8031	ERJ6GMYJ103	M.RESISTOR CH 1/10W 10K	1		C7513	ECUM1H270JCN	C.CAPACITOR CH 50V 27P	1	
R8032	ERJ6GMYJ222	M.RESISTOR CH 1/10W 2.2K	1		C7514	ECUM1H220JCN	C.CAPACITOR CH 50V 22P	1	
R8033	ERJ6GMYJ561	M.RESISTOR CH 1/10W 560	1		C7515	ECUM1H104ZFN	C.CAPACITOR CH 50V 0.1U	1	
R8034,35	ERJ6GMYJ391	M.RESISTOR CH 1/10W 390	2		C7516	ECEAIKKS221	E.CAPACITOR 10V 220U	1	
R8036	ERJ6GMYJ222	M.RESISTOR CH 1/10W 2.2K	1		C7517,18	ECUM1H103ZFN	C.CAPACITOR CH 50V 0.01U	2	
R8037	ERJ6GMYG202	M.RESISTOR CH 1/10W 2K	1		C7519,20	ECEAIKKS4R7	E.CAPACITOR 25V 4.7U	2	
R8038	ERJ6GMYJ392	M.RESISTOR CH 1/10W 3.9K	1		C7521	ECUM1H223KBN	C.CAPACITOR CH 50V 0.022U	1	
R8039	ERJ6GMYJ153	M.RESISTOR CH 1/10W 15K	1		C7522	ECEAOJKS220	E.CAPACITOR 6.3V 22U	1	
R8040	ERJ6GMYJ222	M.RESISTOR CH 1/10W 2.2K	1		C7524	ECUM1H104ZFN	C.CAPACITOR CH 50V 0.1U	1	
R8041	ERJ6GMYJ473	M.RESISTOR CH 1/10W 47K	1		C7525	ECUM1H103ZFN	C.CAPACITOR CH 50V 0.01U	1	
R8042	ERJ6GMYJ103	M.RESISTOR CH 1/10W 10K	1		C7526,27	ECUM1H104ZFN	C.CAPACITOR CH 50V 0.1U	2	
R8043	ERJ6GMYJ333	M.RESISTOR CH 1/10W 33K	1		C7528,29	ECUM1H473ZFN	C.CAPACITOR CH 50V 0.047U	2	
R8044	ERJ6GMYG223	M.RESISTOR CH 1/10W 22K	1						
R8045	ERJ6GMYG333	M.RESISTOR CH 1/10W 33K	1		D7501	MA151K	DIODE	1	
R8046	ERJ6GMYJ122	M.RESISTOR CH 1/10W 1.2K	1		D7502-06	1SS254	DIODE	5	
R8047	ERJ6GMYJ681	M.RESISTOR CH 1/10W 680	1		D7507	MA151K	DIODE	1	
R8048,49	ERJ6GMYJ103	M.RESISTOR CH 1/10W 10K	2		D7510-12	MA151K	DIODE	3	
R8050	ERJ6GMYJ512	M.RESISTOR CH 1/10W 5.1K	1		D7514	MA151K	DIODE	1	
R8051	ERJ6GMYJ222	M.RESISTOR CH 1/10W 2.2K	1		D7516,17	MA151K	DIODE	2	
R8052,53	ERJ6GMYJ103	M.RESISTOR CH 1/10W 10K	2		D7519	MA151K	DIODE	1	
R8054	ERJ6GMYJ390	M.RESISTOR CH 1/10W 39	1		D7521	MA151K	DIODE	1	
R8055	ERJ6GMYJ154	M.RESISTOR CH 1/10W 150K	1		D7523	MA151K	DIODE	1	
R8056	ERJ6GMYJ472	M.RESISTOR CH 1/10W 4.7K	1		D7528	MA151K	DIODE	1	
R8057	ERJ6GMYJ102	M.RESISTOR CH 1/10W 1K	1		D7529	MA723VT	DIODE	1	
R8058	ERJ6GMYJ152	M.RESISTOR CH 1/10W 1.5K	1		D7530	MA151K	DIODE	1	
R8059	ERJ6GMYJ391	M.RESISTOR CH 1/10W 390	1		D7531	1SS254	DIODE	1	
R8060	ERJ6GMYJ182	M.RESISTOR CH 1/10W 1.8K	1		D7532	MA4220	DIODE	1	
R8061	ERJ6GMYJ223	M.RESISTOR CH 1/10W 22K	1		D7542	MA151K	DIODE	1	
R8063	ERJ6GMYOR00	M.RESISTOR CH 1/10W 0	1		D7544	MA151K	DIODE	1	
R8064	ERJ6GMYJ183	M.RESISTOR CH 1/10W 18K	1		D7546	1SS254	DIODE	1	
R8065	ERJ6GMYJ101	M.RESISTOR CH 1/10W 100	1						
R8066	ERJ6GMYJ102	M.RESISTOR CH 1/10W 1K	1						
R8083-85	ERJ6GMYJ472	M.RESISTOR CH 1/10W 4.7K	3		DP7501	VSL0348	DISPLAY TUBE	1	
R8086-89	ERJ6GMYJ473	M.RESISTOR CH 1/10W 47K	4						
R8090	ERJ6GMYJ124	M.RESISTOR CH 1/10W 120K	1						
R8091	ERJ6GMYJ683	M.RESISTOR CH 1/10W 68K	1						

Ref.No.	Part No.	Part Name & Description	Pcs	Remarks	Ref.No.	Part No.	Part Name & Description	Pcs	Remarks
IC7501	M37507V6AD	IC	1		C1101-03	ECKMWS102MEH	C.CAPACITOR 1000P	3	<1>
IC7503	RPM675CBRX10	IR RECEIVER UNIT	1		C1105,06	ECQU2A154MW	P.CAPACITOR 100V 0.15U	2	<1>
IC7504	PST7023	IC	1		C1107	ECEC2GG121HZ	E.CAPACITOR 400V 120U	1	
IC7505	S80743AL	IC	1		C1108	EOCD3A121KGE	C.CAPACITOR 1KV 120P	1	
IC7506	BA6810F	IC	1		C1109	ECKD2H103PU	C.CAPACITOR 500V 0.01U	1	
					C1110	ECAOGKLV331	E.CAPACITOR 4V 330U	1	
K7504	ERJ6GMZOR00	M.RESISTOR CH 1/10W 0	1		C1111	ECKF1H102KB	C.CAPACITOR 50V 1000P	1	
					C1112	ECQB1H822JF	P.CAPACITOR 50V 8200P	1	
					C1113	ECQE6104KF	P.CAPACITOR 630V 0.1U	1	
P7501	VJS3537A032G	CONNECTOR (FEMALE) 32P	1		C1114	ECA1VXLV470	E.CAPACITOR 35V 47U	1	
P7504	VJS3405A013A	CONNECTOR (FEMALE) 13P	1		C1121	EEUFA1E272E	E.CAPACITOR 25V 2700U	1	
					C1122	EEUFA1E102	E.CAPACITOR 25V 1000U	1	<1>
PP7501	VJS3301	CONNECTOR (FEMALE)	1		C1123	ECKD2H101KB	C.CAPACITOR 500V 100P	1	
					C1124	EEUFA1A332E	E.CAPACITOR 10V 3300U	1	
					C1125	EEUFA1A102B	E.CAPACITOR 10V 1000U	1	
QR7505-08	MUN2113	TRANSISTOR-RESISTOR	4		C1126	ECKD2H101KB	C.CAPACITOR 500V 100P	1	
QR7509-11	MUN2111	TRANSISTOR-RESISTOR	3		C1127	EEUFA1H820B	E.CAPACITOR 50V 82U	1	
QR7512,13	MUN2112	TRANSISTOR-RESISTOR	2		C1128	ECKF1H1032F	C.CAPACITOR 50V 0.01U	1	
					C1129	ECKD2H101KB	C.CAPACITOR 500V 100P	1	
					C1130	EEUFA1V151B	E.CAPACITOR 35V 150U	1	
R7501-04	ERJ6GMJ221	M.RESISTOR CH 1/10W 220	4		C1131	ECKF1H1032F	C.CAPACITOR 50V 0.01U	1	
R7505,06	ERJ6GMJ332	M.RESISTOR CH 1/10W 3.3K	2		C1132	ECKD2H101KB	C.CAPACITOR 500V 100P	1	
R7508-10	ERJ6GMJ332	M.RESISTOR CH 1/10W 3.3K	3		C1133	EEUFA0J561B	E.CAPACITOR 6.3V 560U	1	
R7512	ERJ6GMJ103	M.RESISTOR CH 1/10W 10K	1		C1134,35	ECQB1H103JF	P.CAPACITOR 50V 0.01U	2	
R7513	ERJ6GMJ332	M.RESISTOR CH 1/10W 3.3K	1						
R7514	ERJ6GMJ221	M.RESISTOR CH 1/10W 220	1		D1102	S1WBA60S	DIODE	1	<1>
R7515	ERDS2TJ470	C.RESISTOR 1/4W 47	1		D1103	AP01C	DIODE	1	
R7516	ERJ6GMJ332	M.RESISTOR CH 1/10W 3.3K	1		D1104	MA178	DIODE	1	
R7517	ERJ6GMJ102	M.RESISTOR CH 1/10W 1K	1		D1105	MA700	DIODE	1	
R7518	ERJ6GMJ221	M.RESISTOR CH 1/10W 220	1		D1106	MA4200H	DIODE	1	
R7519	ERJ6GMJ102	M.RESISTOR CH 1/10W 1K	1		D1107	1SS254	DIODE	1	
R7520, 21	ERJ6GMJ221	M.RESISTOR CH 1/10W 220	2		D1108,09	ERA15-08	DIODE	2	
R7522	ERJ6GMZOR00	M.RESISTOR CH 1/10W 0	1		D1110	RD100E	DIODE	1	
R7523	ERJ6GMJ101	M.RESISTOR CH 1/10W 100	1		D1121	F5KF20B	DIODE	1	
R7524	ERJ6GMJ331	M.RESISTOR CH 1/10W 330	1		D1122	F5KQ40	DIODE	1	
R7525	ERJ6GMJ224	M.RESISTOR CH 1/10W 220K	1		D1123	ERA22-02	DIODE	1	
R7527	ERJ6GMJ223	M.RESISTOR CH 1/10W 22K	1		D1124	MA185	DIODE	1	
R7528	ERJ6GMJ102	M.RESISTOR CH 1/10W 1K	1		D1125	11EQS04	DIODE	1	
R7529,30	ERJ6GMJ473	M.RESISTOR CH 1/10W 47K	2		D1126	MA4047-M	DIODE	1	
R7531	ERJ6GMJ564	M.RESISTOR CH 1/10W 680K	1		D1127	MA4043L	DIODE	1	
R7532	ERJ6GMJ272	M.RESISTOR CH 1/10W 2.7K	1						
R7533	ERJ6GMJ564	M.RESISTOR CH 1/10W 560K	1		IC1101	STRM6559LF	IC	1	
R7534,35	ERJ6GMJ132	M.RESISTOR CH 1/10W 1.3K	2						
R7536	ERJ6GMZOR00	M.RESISTOR CH 1/10W 0	1						
R7537,38	ERJ6GMJ223	M.RESISTOR CH 1/10W 22K	2						
					L1101,02	ELF18D221F	COIL 220UH	2	<1>
					L1103,04	VLPO083	COIL	2	
RX7501,02	EXBF6E104J	RESISTOR-RESISTOR	2		L1105	VLPO085	COIL	1	
RX7503	EXBF8E104J	RESISTOR-RESISTOR	1		L1106	VLPO083	COIL	1	
					L1121,22	VLQ0611K220	COIL 22UH	2	
					L1123,24	ELESE101KA	COIL 100UH	2	
S7501-11	EVQ11409K	SWITCH	11						
S7512	VSQ0822	ROTARY SWITCH	1						
					P1101	VJS3306	AC INLET	1	<1>
					P1102	VJP3631A011W	CONNECTOR (MALE) 11P	1	
VC7501	ECRHA010A54R	V.CAPACITOR 0.05U	1						
					Q1101	PC120FY	TRANSISTOR	1	<1>
VR4004	EVNCA03B53	V.RESISTOR 5K	1						
					QR1121	UN6213	TRANSISTOR-RESISTOR	1	
X7501	VSX0608	CRYSTAL OSCILLATOR	1						
X7502	VSX0094	CRYSTAL OSCILLATOR	1						
					R1101	ERC12AGM334	S.RESISTOR 1/2W 330K	1	<1>
					R1102	ERG1SJ393	M.RESISTOR 1W 39K	1	
ZB7501	VJF1139	FIP HOLDER	1		R1105	ERDS1TJ395	C.RESISTOR 1/2W 3.9M	1	
ZB7502	VMD2247	IR RECEIVER HOLDER	1		R1106	ERDS1TJ475	C.RESISTOR 1/2W 4.7M	1	
ZB7503	VMD2035	JOG SHUTTLE HOLDER	1		R1107	ERDS2FJ224	C.RESISTOR 1/4W 220K	1	
					R1108	ERDS2FJ101	C.RESISTOR 1/4W 100	1	
					R1109	ERDS2FJ152	C.RESISTOR 1/4W 1.5K	1	
					R1110	ERDS2FJ103	C.RESISTOR 1/4W 10K	1	
	VEPO1639B	POWER C.B.A.		(RTL) <1>	R1111	ERDS2FJ561	C.RESISTOR 1/4W 560	1	
					R1112	ERDS2FJ331	C.RESISTOR 1/4W 330	1	

Ref.No.	Part No.	Part Name & Description	Pcs	Remarks	Ref.No.	Part No.	Part Name & Description	Pcs	Remarks
R1113	ERX1SJ82	M.RESISTOR 1W 0.82	1		TH2901	VRHO017-1A	THERMISTOR	1	
R1114	ERDS2FJ222	C.RESISTOR 1/4W 2.2K	1						
R1115	ERDS2FJ220	C.RESISTOR 1/4W 22	1				MISCELLANEOUS		
R1121	ERDS2TJ220	C.RESISTOR 1/4W 22	1			VMA9138	MAIN HOLDER	1	
R1122	ERDS2TJ221	C.RESISTOR 1/4W 220	1						
T1101	ETE28K100BY	TRANSFORMER	1	<1>					
ZA1101,02	EYF52BC	FUSE HOLDER	2	<1>					
ZA1103	VSC4205	SHIELD CASE	1						
ZA1104,05	VSC3434	SHIELD CASE	2						
ZA1106	VSC4259	SHIELD CASE	1						
ZA1109,10	XTN3+8G	SCREW	2						
ZA1111	XTN3+10G	SCREW	1						
ZB1101,02	VM22212	CAPACITOR COVER	2	<1>					
	VEPO1637A	SUB POWER C.B.A.		(RTL)<1>					
C1201	ECKFIH103ZF	C.CAPACITOR 50V 0.01U	1						
C1202,03	ECEA1CGE101	E.CAPACITOR 16V 100U	2						
D1201-07	11ES1	DIODE	7						
IC1201	UPC393C	IC	1						
IC1202	SI309OCLF	IC	1						
P1201	VJP1231T	CONNECTOR (MALE) 4P	1						
P1202,03	VJP1232T	CONNECTOR (MALE) 5P	2						
Q1201	2SB1398-Q	TRANSISTOR	1						
R1201,02	ERDS2TJ152	C.RESISTOR 1/4W 1.5K	2						
R1203	ERDS2TJ103	C.RESISTOR 1/4W 10K	1						
R1204	ERDS2TJ122	C.RESISTOR 1/4W 1.2K	1						
R1205	EROS2CKG2000	M.RESISTOR 1/4W 200	1						
R1206	EROS2CKG2201	M.RESISTOR 1/4W 2.2K	1						
R1207	EROS2CKG2000	M.RESISTOR 1/4W 200	1						
VR1201	EVMEASA00B22	V.RESISTOR 200	1						
	VEX0231	CYLINDER DRIVE C.B.A.		(RTL)					
C2901-03	ECEA1VSN2R2	E.CAPACITOR 35V 2.2U	3						
C2904-06	ECUM1E104KBM	C.CAPACITOR CH 25V 0.1U	3						
C2907	ECUM1E683KBM	C.CAPACITOR CH 25V 0.068U	1						
C2908	ECUM1E473KBM	C.CAPACITOR CH 25V 0.047U	1						
C2910	ECEA1CKS100	E.CAPACITOR 16V 10U	1						
IC2901	AN3814K	IC	1						
P2901	VJP2603W	CONNECTOR (MALE)	1						
P2902	VJP1232T	CONNECTOR (MALE) 5P	1						
R2901	ERX12SJR68	M.RESISTOR CH 1/2W 0.68	1						