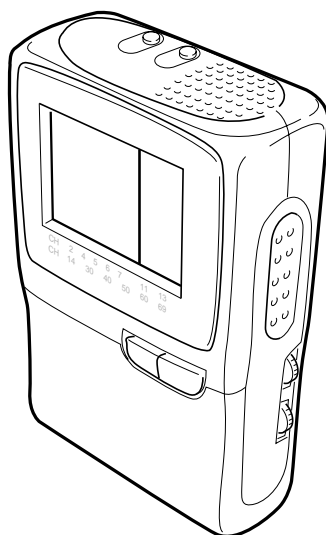


SERVICE MANUAL & PARTS LIST (without price)

TV-770B (KX-503B)
(For NTSC)

JUN. 1996



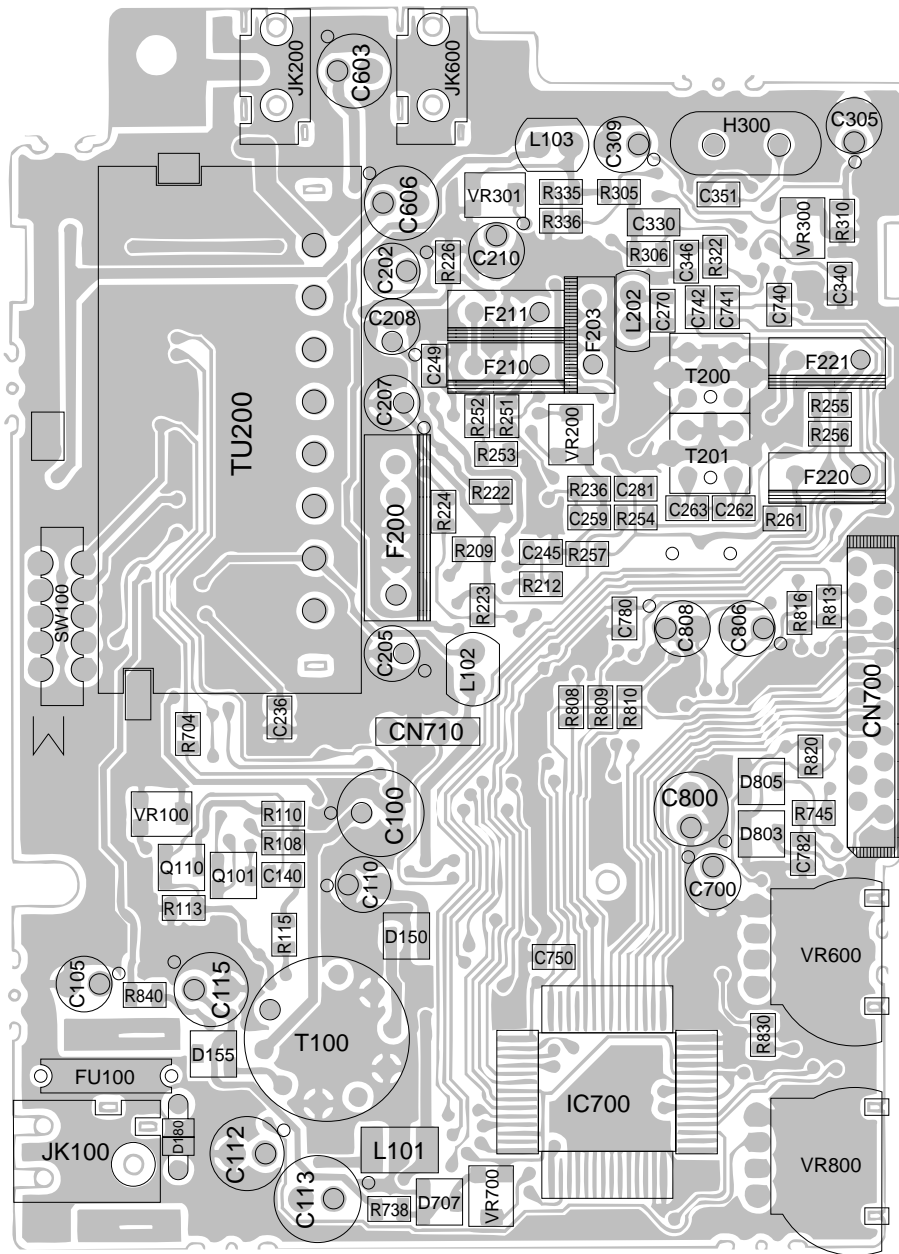
TV-770B

CASIO®

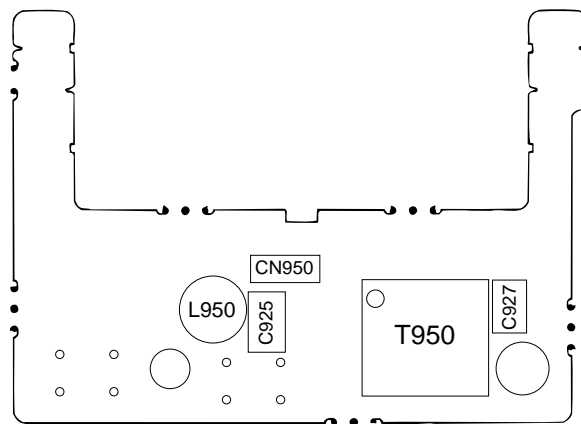
PRINTED CIRCUIT BOARDS

TOP VIEWS

Linear



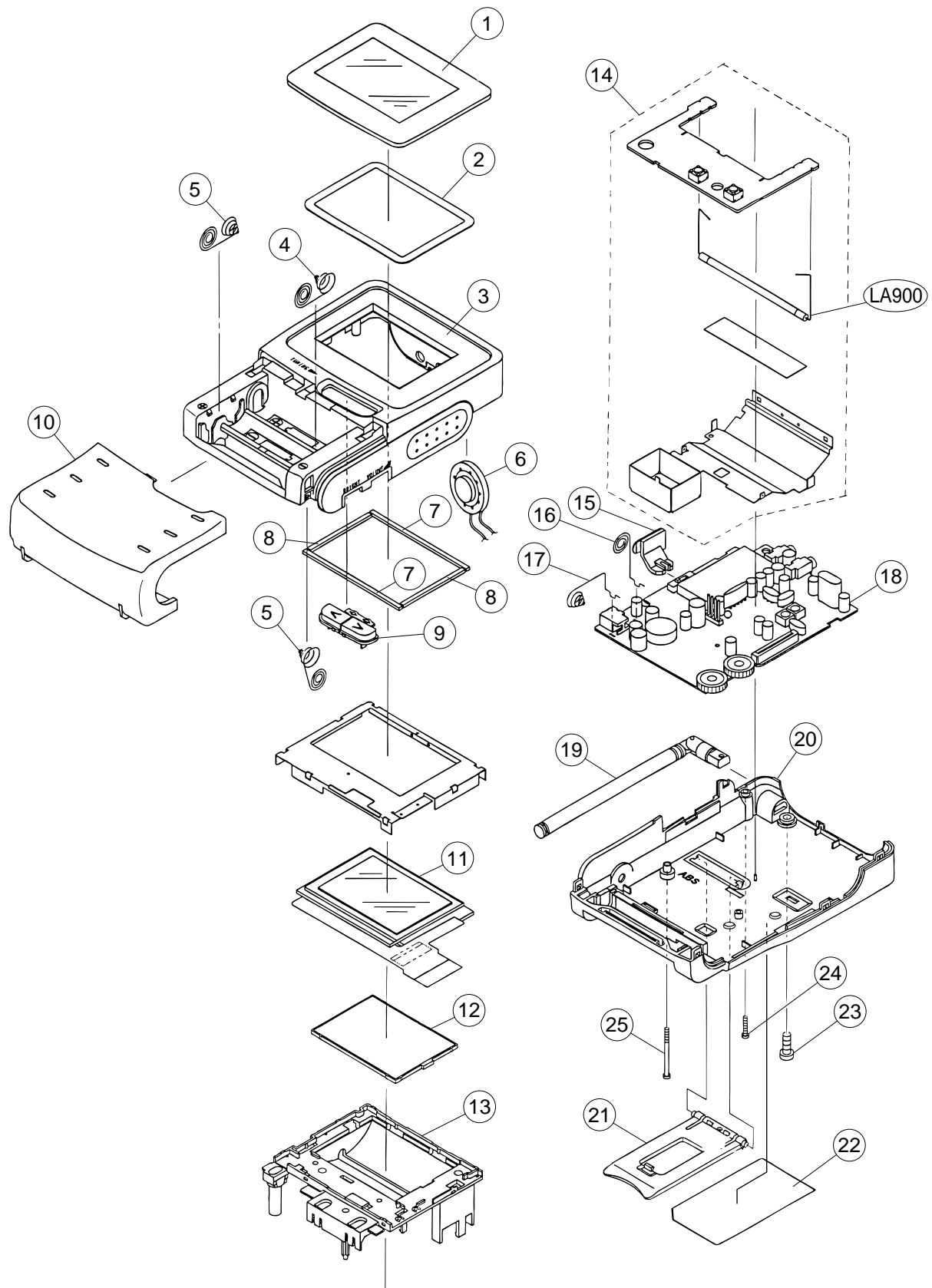
Back Light



Linear



EXPLODED VIEW



IC AND TRANSISTOR LEAD IDENTIFICATION

IC/LSI

IC200 M51348FP-T1

IF AGC OUT	1	24	IF AGC ADJ
IF AGC IN	2	23	SyOUT
RF AGC	3	22	SyIN
AGCDL	4	21	AFTC
VCCv	5	20	LLD
IFIN	6	19	LLD
IFIN	7	18	VIDEO
GNDv	8	17	AFT
VCCs	9	16	SIFOUT
SIFIN	10	15	FMD
FB	11	14	ATT
GNDs	12	13	AUDIO

IC300 M52042FP

VIDEO	1	24	VCC
SY IN	2	23	VCXO OUT
ACCF	3	22	NC
SY OUT	4	21	VCXO IN
HDIN	5	20	COLOR
Y CLAMP	6	19	TINT
Y LPF	7	18	KILLER F
Y OUT	8	17	APCF
CONT	9	16	APCREF
R	10	15	KILLER OUT
G	11	14	PIX
B	12	13	GND

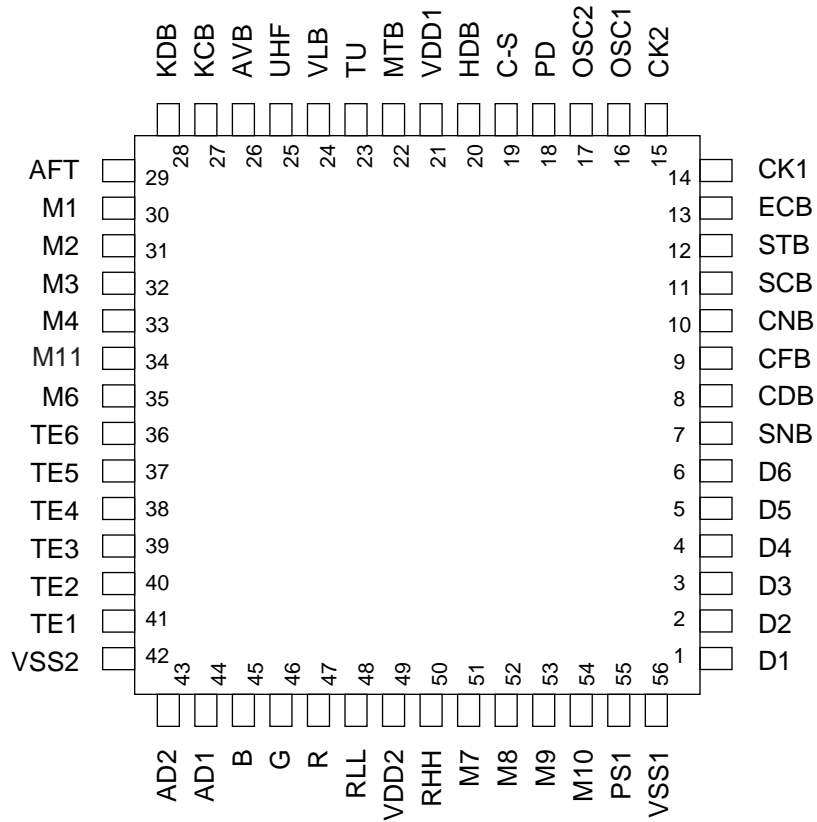
IC500 MSC1169MS-K-620

Vref	1	16	VCC
U1	2	15	BS
U2	3	14	BT
VL1	4	13	IN
VL2	5	12	OUT
VH1	6	11	TU
VH2	7	10	H/L
GND	8	9	U/V

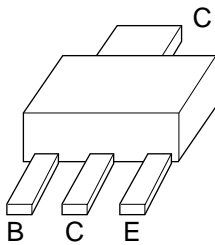
IC600 NJM2070M-T1

NC	1	8	NC
+IN	2	7	VCC
-IN	3	6	OUT
GND	4	5	GND

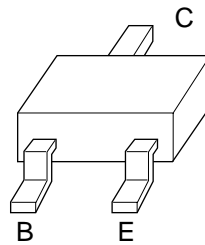
IC700
MSM6625-02GSK-640F



TRANSISTORS



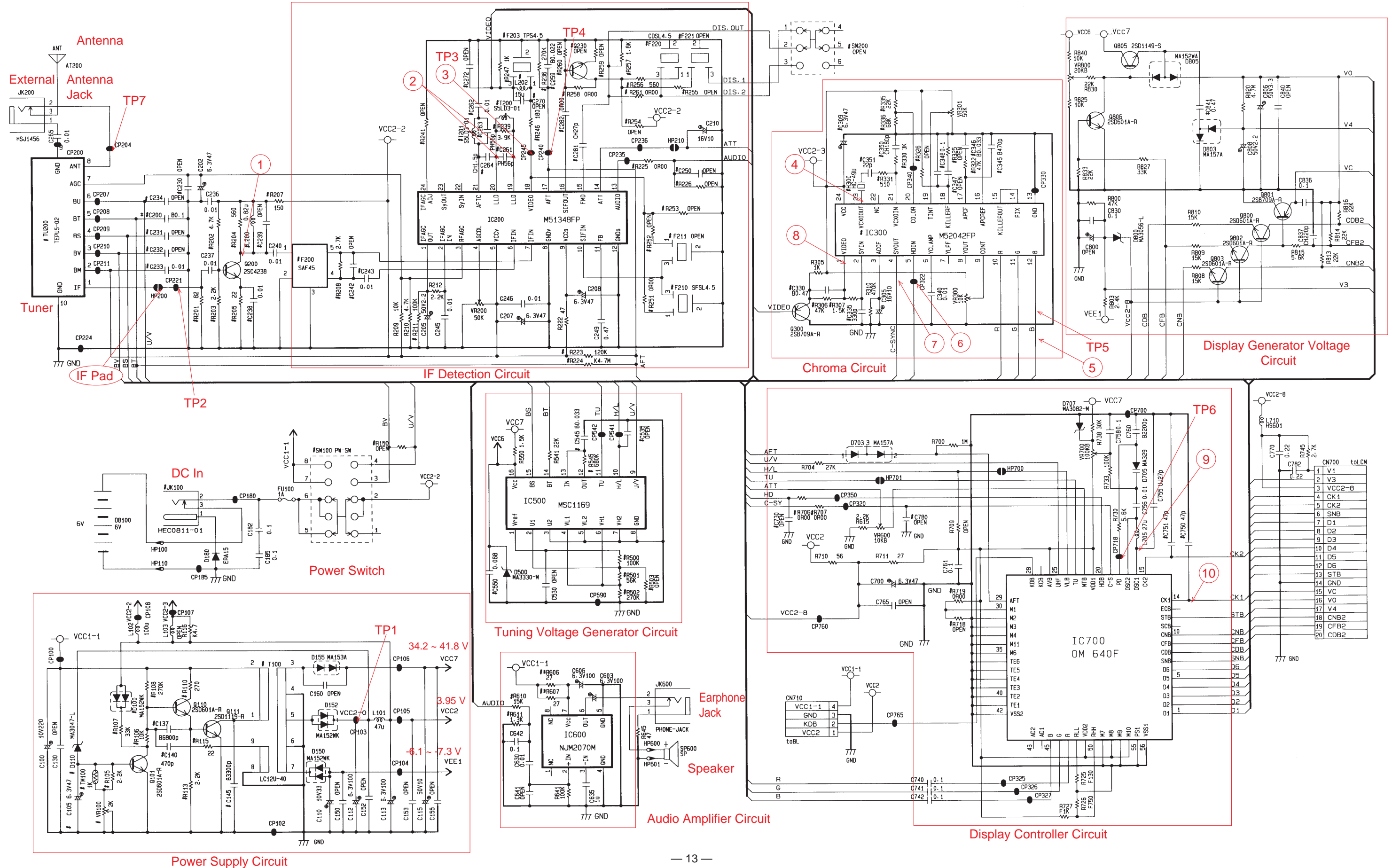
2SD1119



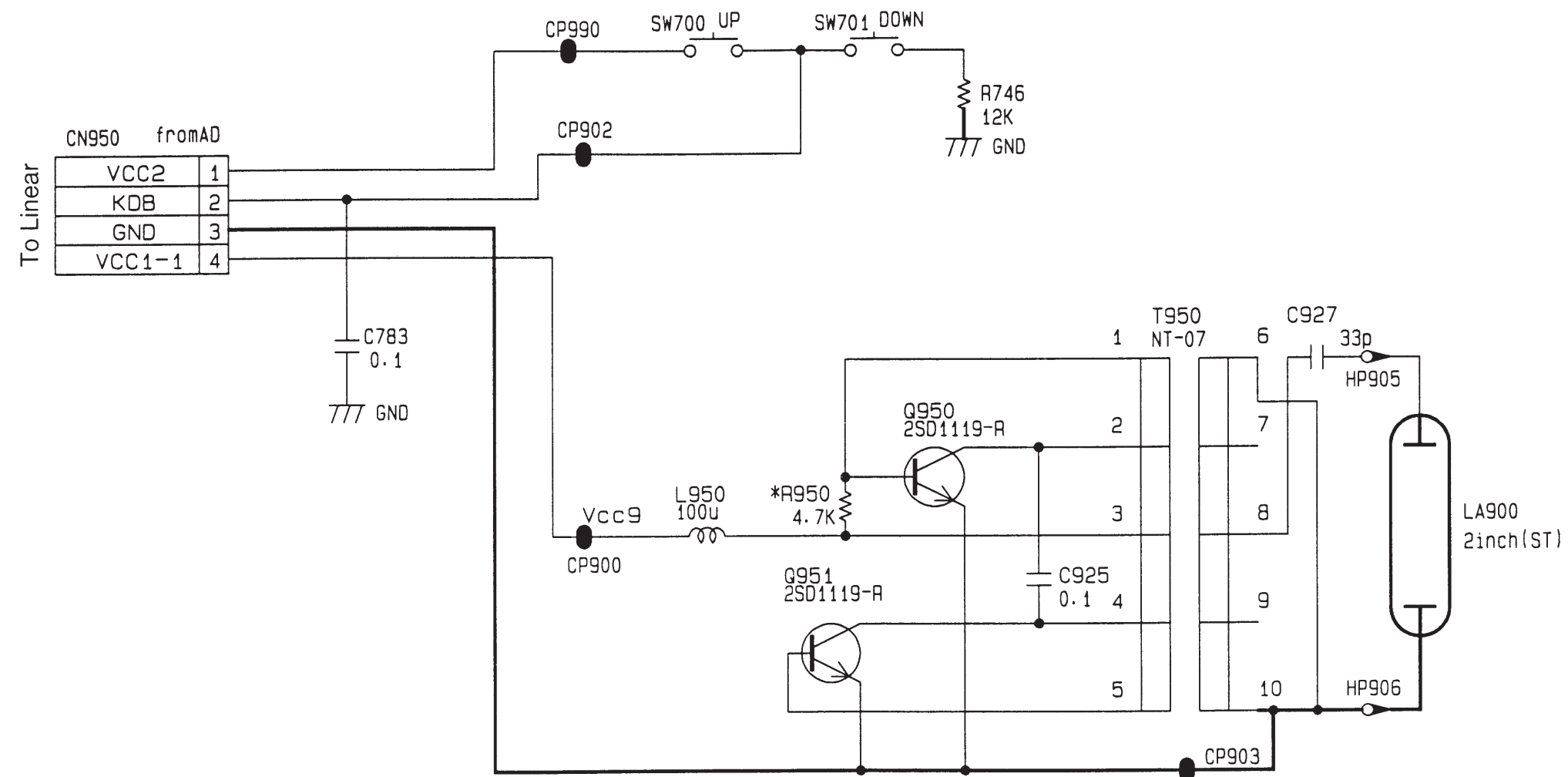
2SB709A 2SD601A
2SC4238 2SD1149-S

SCHEMATIC DIAGRAMS

LINEAR



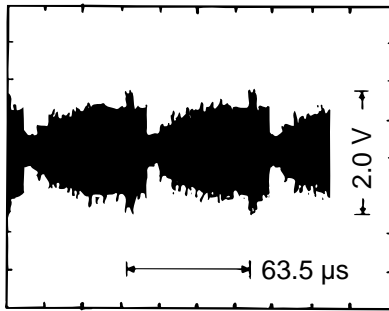
BACK LIGHT



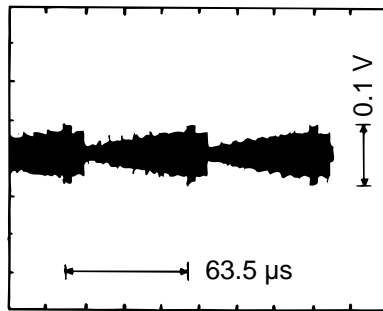
Notes:

1. All resistance values are indicated in "ohms" ($k=10^3$ ohms, $M=10^6$ ohms).
2. All capacitance values are indicated in " μF " ($p=10^{-6}$ μF).
3. All inductance values are indicated in " μH ."

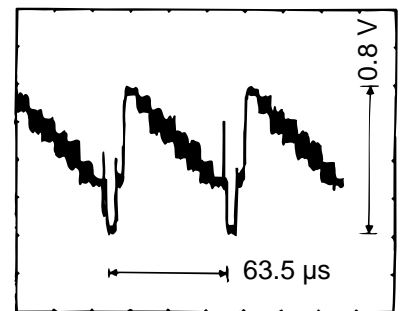
WAVEFORMS



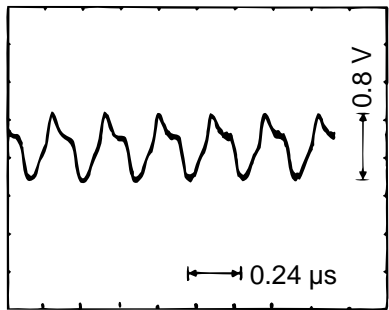
① Q200 collector



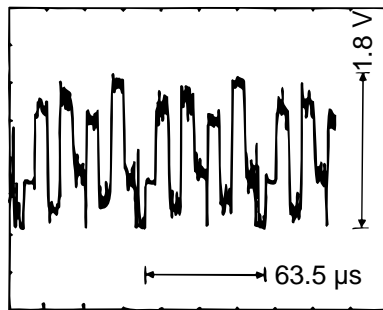
② IC200 pin 19



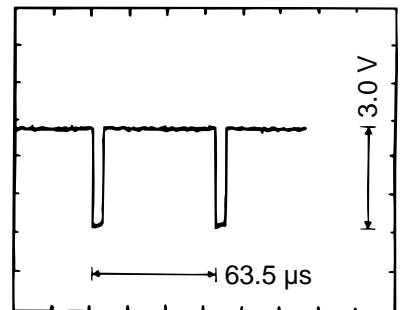
③ IC200 pin 18



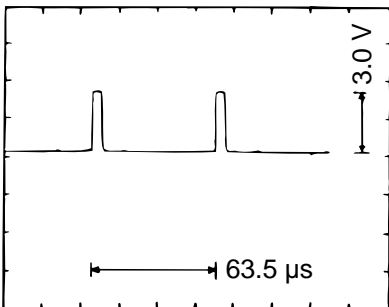
④ IC300 pin 23



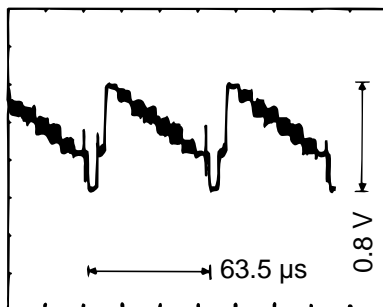
⑤ IC300 pin 12



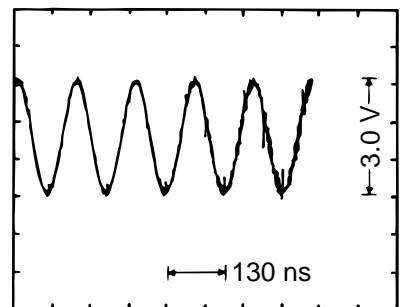
⑥ IC300 pin 5



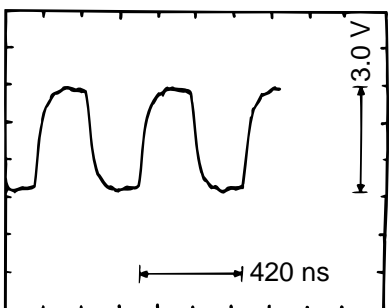
⑦ IC300 pin 4



⑧ IC300 pin 1



⑨ IC700 pin 16



⑩ IC700 pin 14