

SERVICE MANUAL **& PARTS LIST** (with price)

POCKET TELEVISION

TV-350B

SEPTEMBER 1994

	Page
Specifications.....	2
Block Diagram	3
Adjustment	
Linear PCB.....	4
Printed Circuit Boards	8
Wiring Diagram	10
Electrical Parts List	11
Mechanical Parts List.....	17
Exploded Views / Disassembly	18
Schematic Diagrams and Waveforms	19

CASIO®

ADJUSTMENT

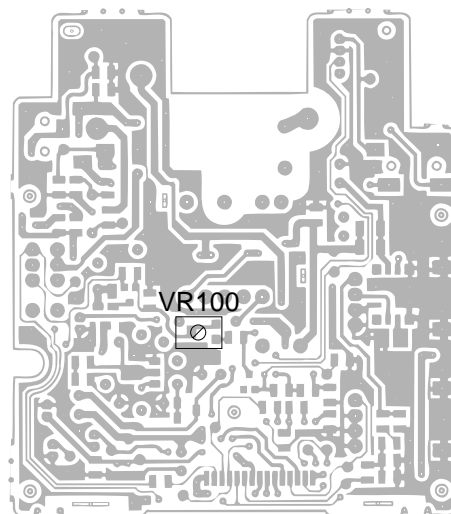
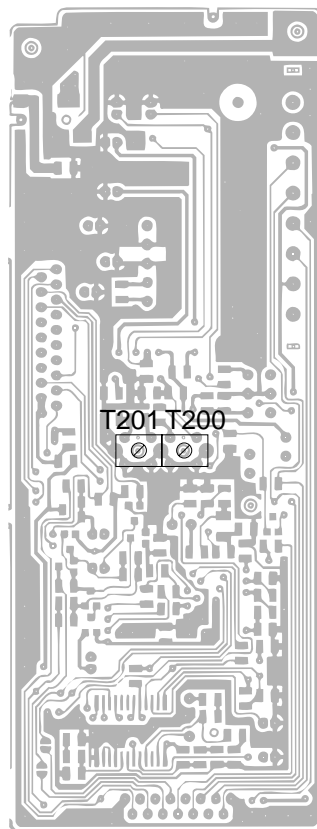
Linear PCB

1) Items to Be Adjusted

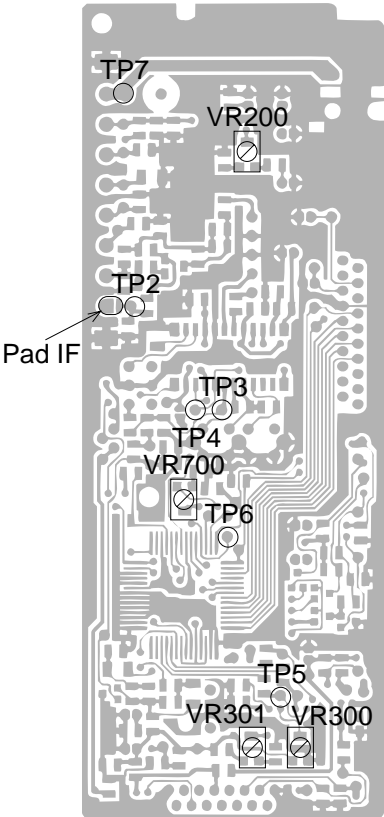
Item	Measuring Instrument
VCC2 voltage setting	Voltmeter
Video detection coil adjustment	TV signal generator, Pattern generator, Oscilloscope, Low-pass filter
AFT coil adjustment	Sweep generator, Oscilloscope, Voltmeter
Contrast adjustment	TV signal generator, Pattern generator, Oscilloscope
AGC adjustment	TV signal generator, Pattern generator, IF levelmeter
Clock adjustment	Voltmeter

2) Adjustment and Test Point Locations

TOP VIEW



BOTTOM VIEW

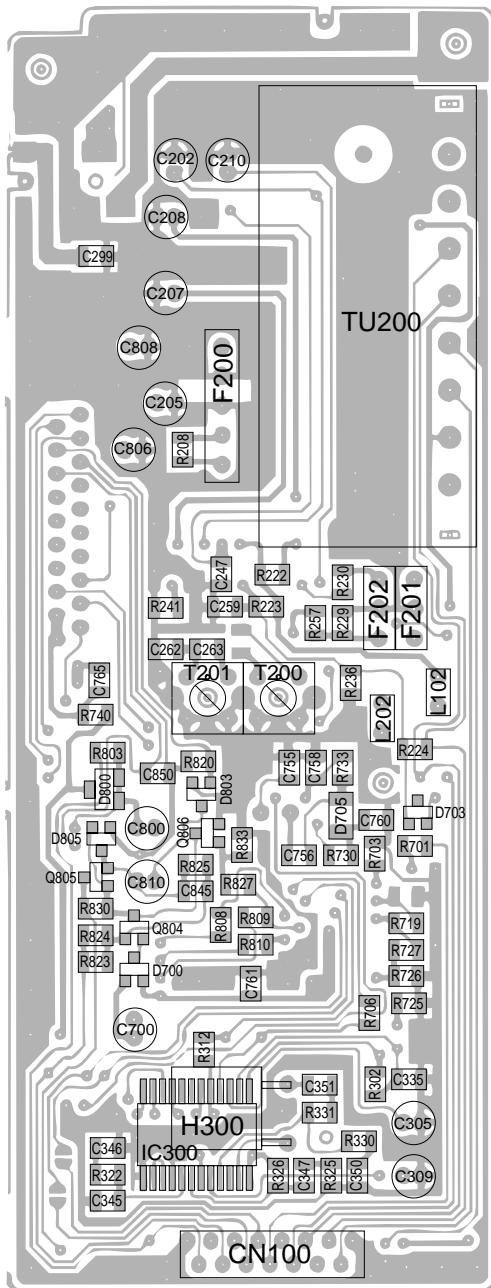


3) Equipment Connection / Procedure

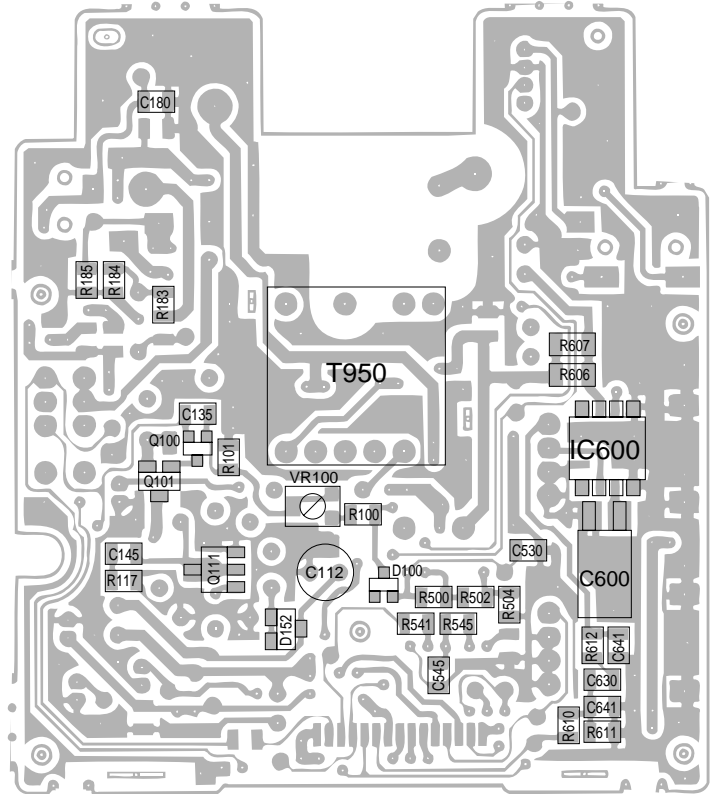
VCC2 Voltage Setting						
<div><div>TV-350 Set</div><div>Output TP1</div><div>Voltmeter</div></div>						
Input Connection	Input Point	Input Signal	Adjust	Output Connection	Output Point	Result
_____	_____	_____	VR100	Voltmeter	TP1	Adjust for $3.95 \pm 0.02V$ reading on voltmeter.

PRINTED CIRCUIT BOARDS

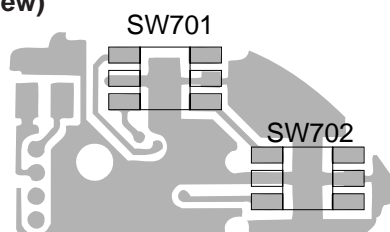
Linear PCB (Top View)



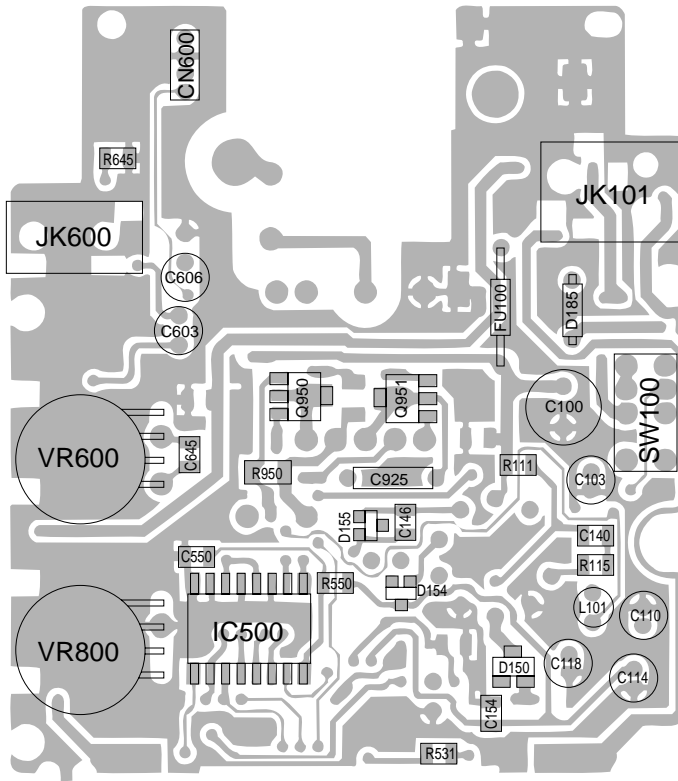
PW PCB
(Top View)



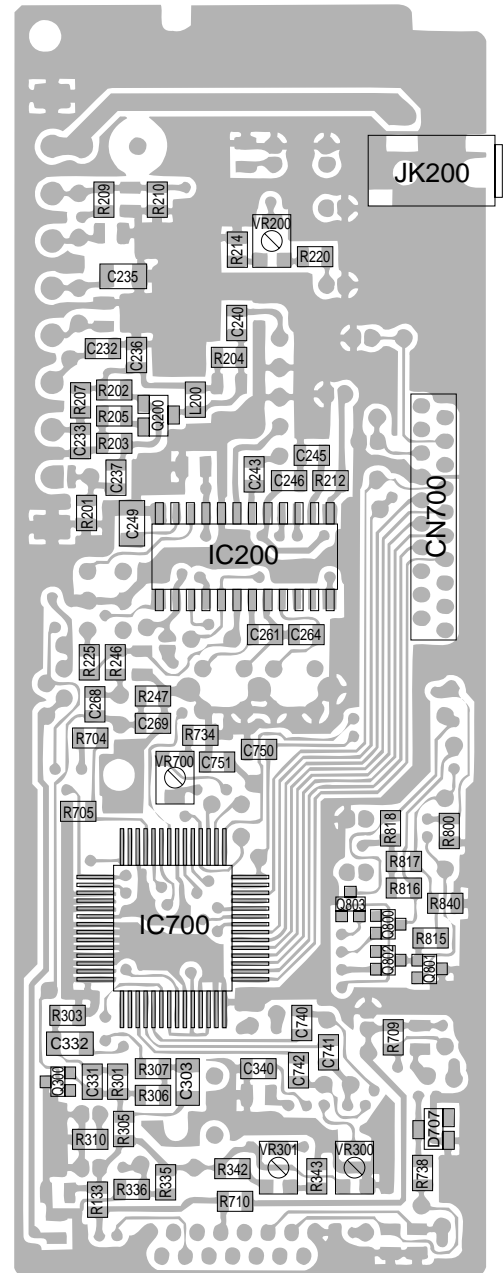
**KY PCB
(Top View)**



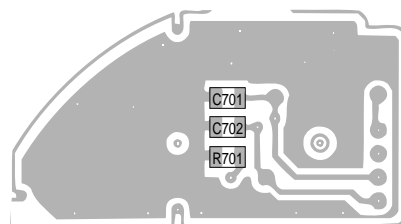
PW PCB
(Bottom View)



Linear PCB
(Bottom View)

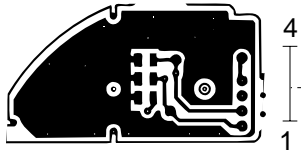


KY PCB
(Bottom View)



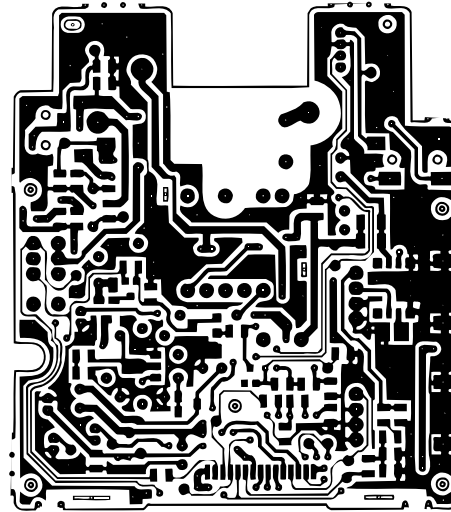
WIRING DIAGRAM

KY PCB



4
1

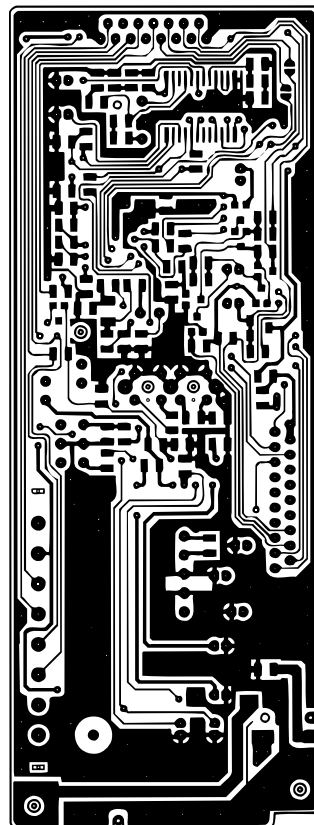
PW PCB



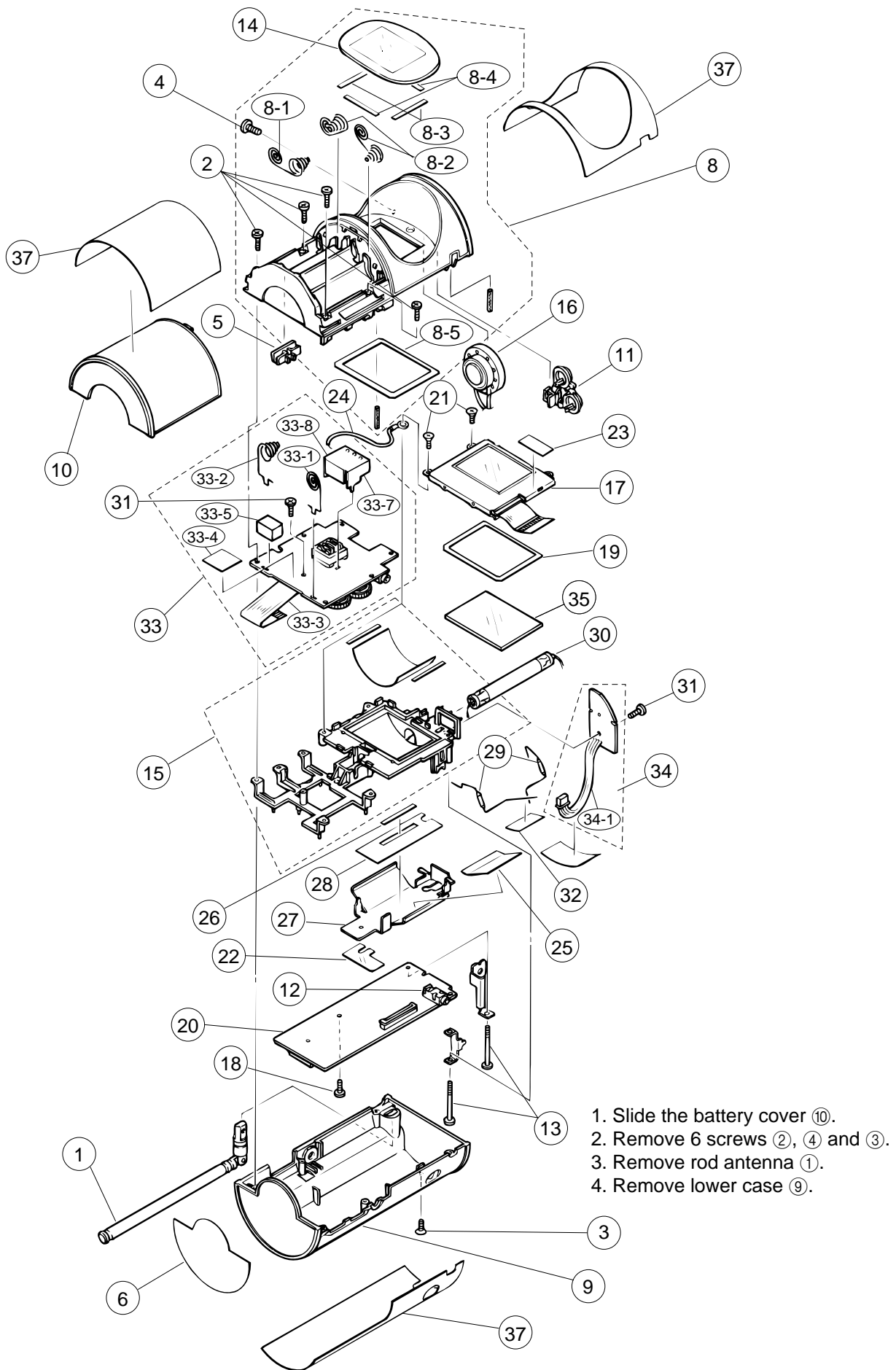
15 1

15 1

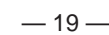
Linear PCB



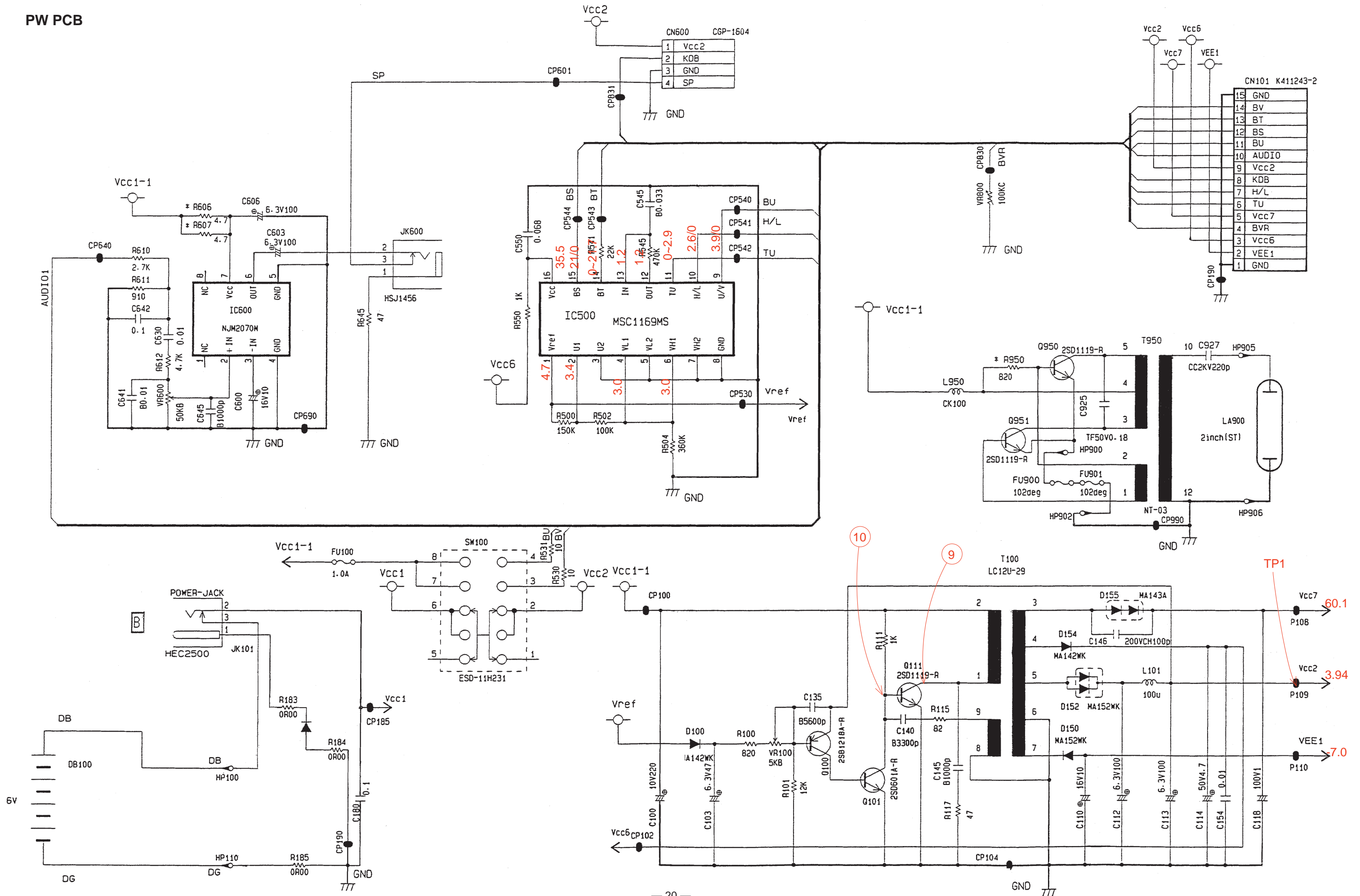
EXPLODED VIEWS / DISASSEMBLY



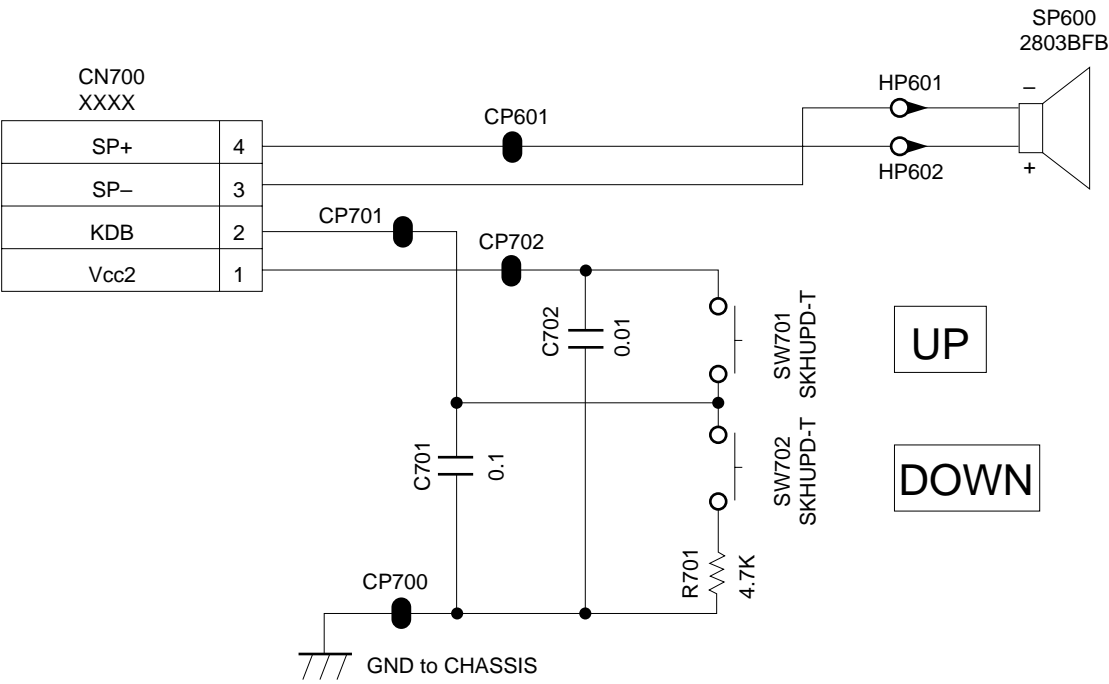
Linear PCB



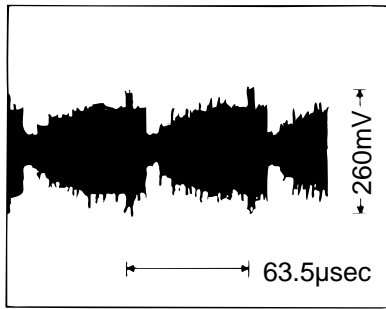
PW PCB



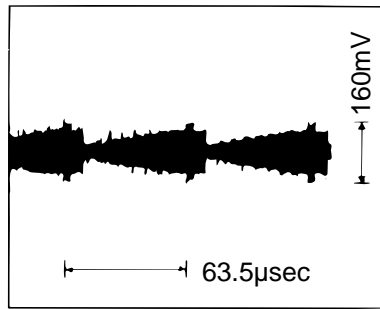
KY PCB



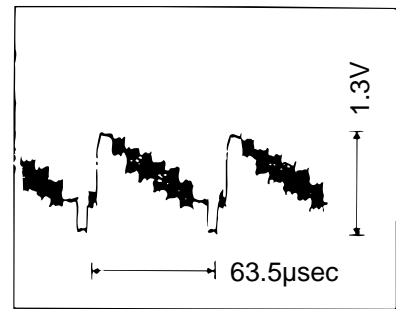
WAVEFORMS



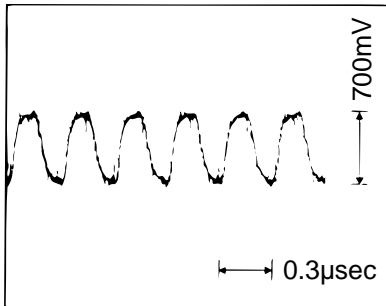
① Q200 Collector



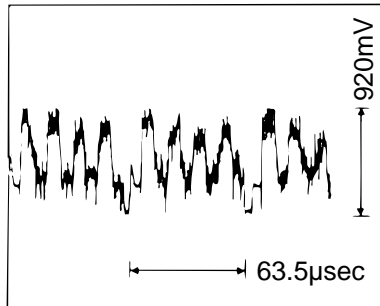
② IC200 Pin 19



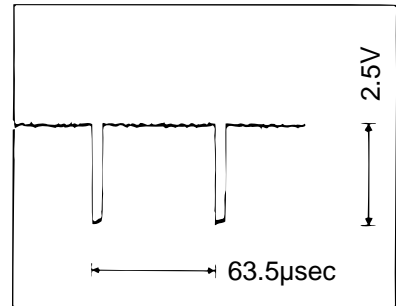
③ IC200 Pin 18



④ IC300 Pin 23



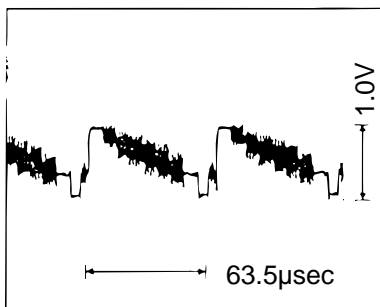
⑤ IC300 Pins 10,11,12



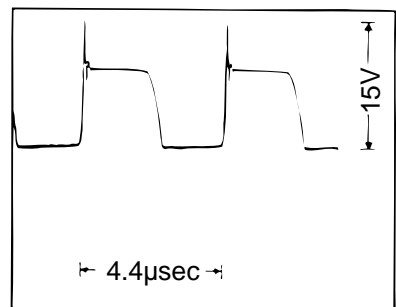
⑥ IC300 Pin 5



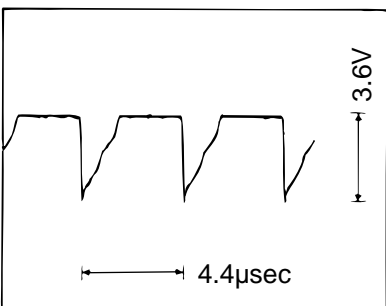
⑦ IC300 Pin 4



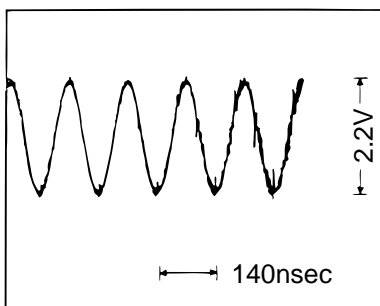
⑧ IC300 Pin 1



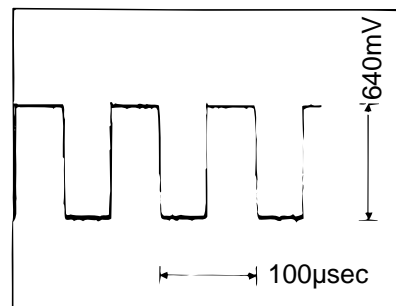
⑨ Q111 Collector



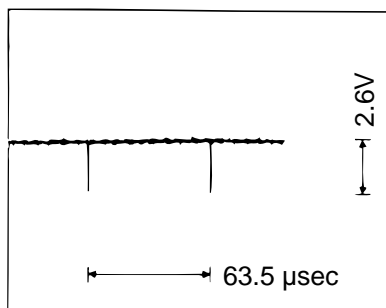
⑩ Q111 Base



⑪ IC700 Pin 17



⑫ Q806 Base



⑬ IC700 Pin 12