

SERVICE MANUAL **& PARTS LIST** (with price)

LCD VIDEO MONITOR

VM-570B

JUNE 1994

	Page
Specifications.....	1
Block Diagram	2
Power Supply.....	3
Adjustment	
Linear PCB.....	4
A/D PCB	6
Printed Circuit Boards	7
Wiring Diagram	10
Electrical Parts List	11
Mechanical Parts List.....	16
Exploded View / Disassembly	17
Waveforms	18
Schematic Diagrams	19

CASIO®

POWER SUPPLY

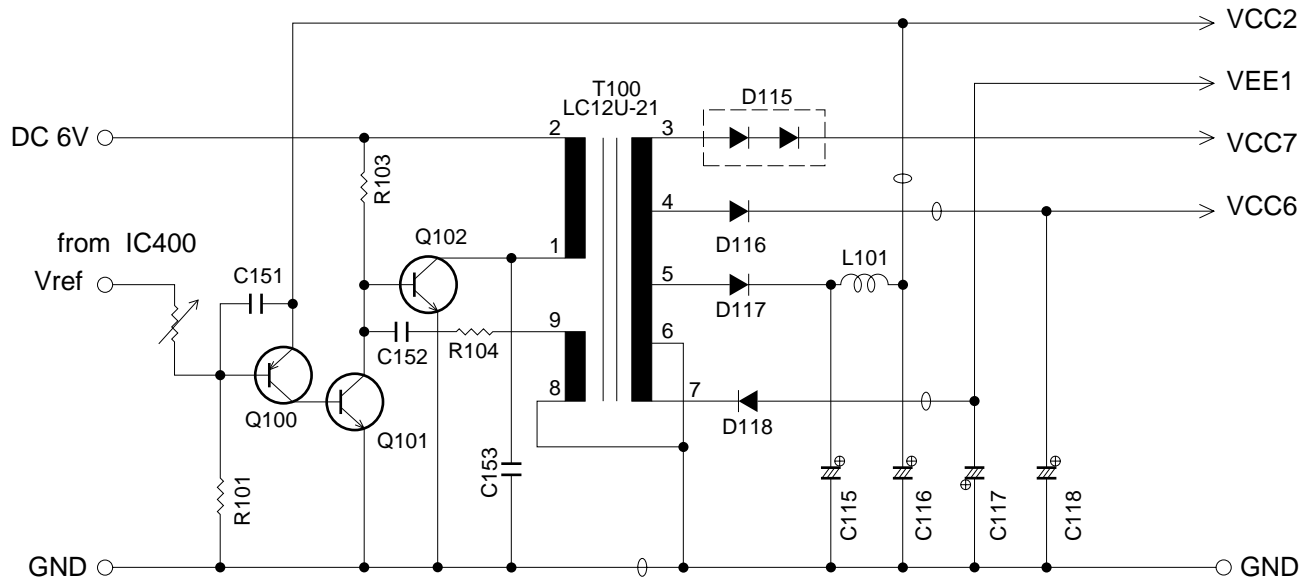


Fig. 3

The power supply consists of DC-DC converter, and causes the voltages to be output as shown in Table - 2.

Name	Voltage	Function
VCC2	$4.0 \pm 0.02V$	Main voltage
VCC6	48.0 ~ 72.0V	Tuning voltage
VCC7	28.0 ~ 40.0V	Display voltage
VEE1	-8.4 ~ -5.6V	Display voltage

Table - 2

ADJUSTMENT

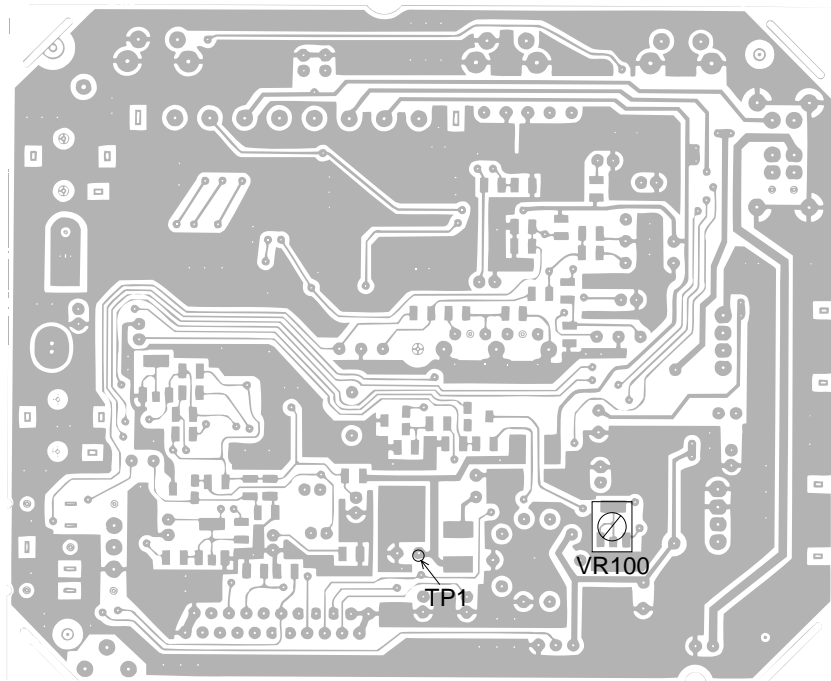
Linear PCB

1) Items to Be Adjusted:

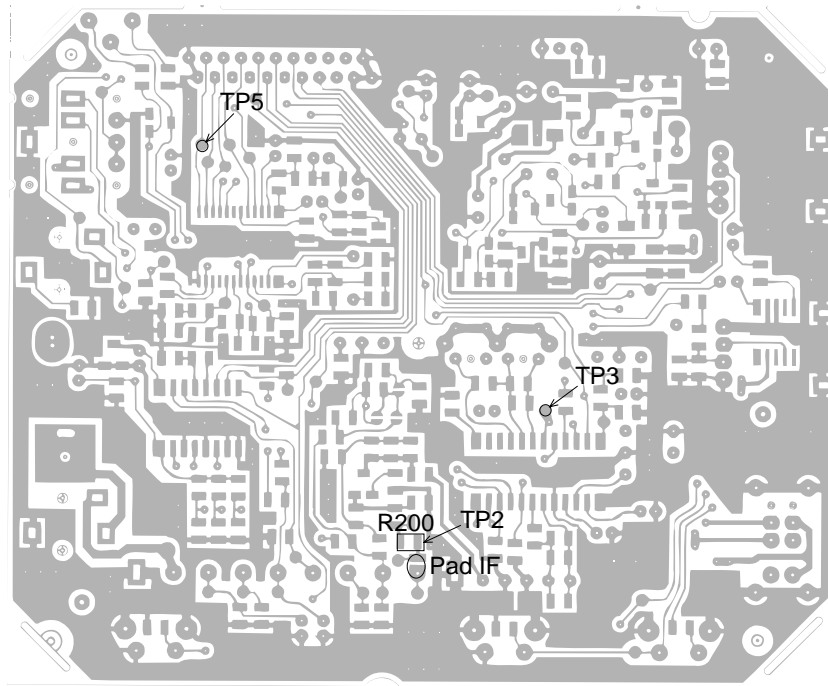
Item	Measuring Instrument
VCC2 voltage setting	Voltmeter
Contrast adjustment	TV signal generator, Pattern generator, Oscilloscope
AGC adjustment	TV signal generator, Pattern generator, IF levelmeter

2) Adjustment and Test Point Locations:

TOP VIEW



BOTTOM VIEW



3) Equipment Connection / Procedure

Vcc2 Voltage Setting						
Input Connection	Input Point	Input Signal	Adjust	Output Connection	Output Point	Adjust for
_____	_____	_____	VR100	Voltmeter	TP1	Adjust for $4.00 \pm 0.02V$ reading on voltmeter.
Contrast Adjustment						
<p>* Open soldering pad IF.</p>						
VCR	AV Jack	Color bar	VR300	Oscilloscope	TP5	Adjust step form wave to read $0.8 \pm 0.05 V_{p-p}$.

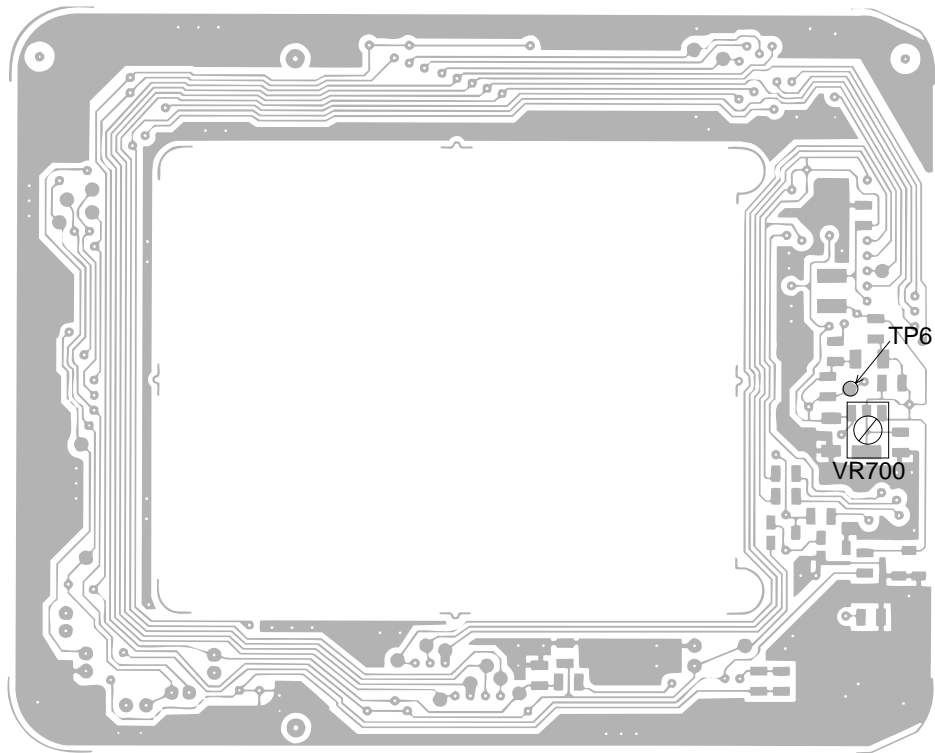
A/D PCB

1) Item to Be Adjusted:

Item	Measuring Instrument
Clock adjustment	Voltmeter

2) Adjustment and Test Point Locations:

TOP VIEW

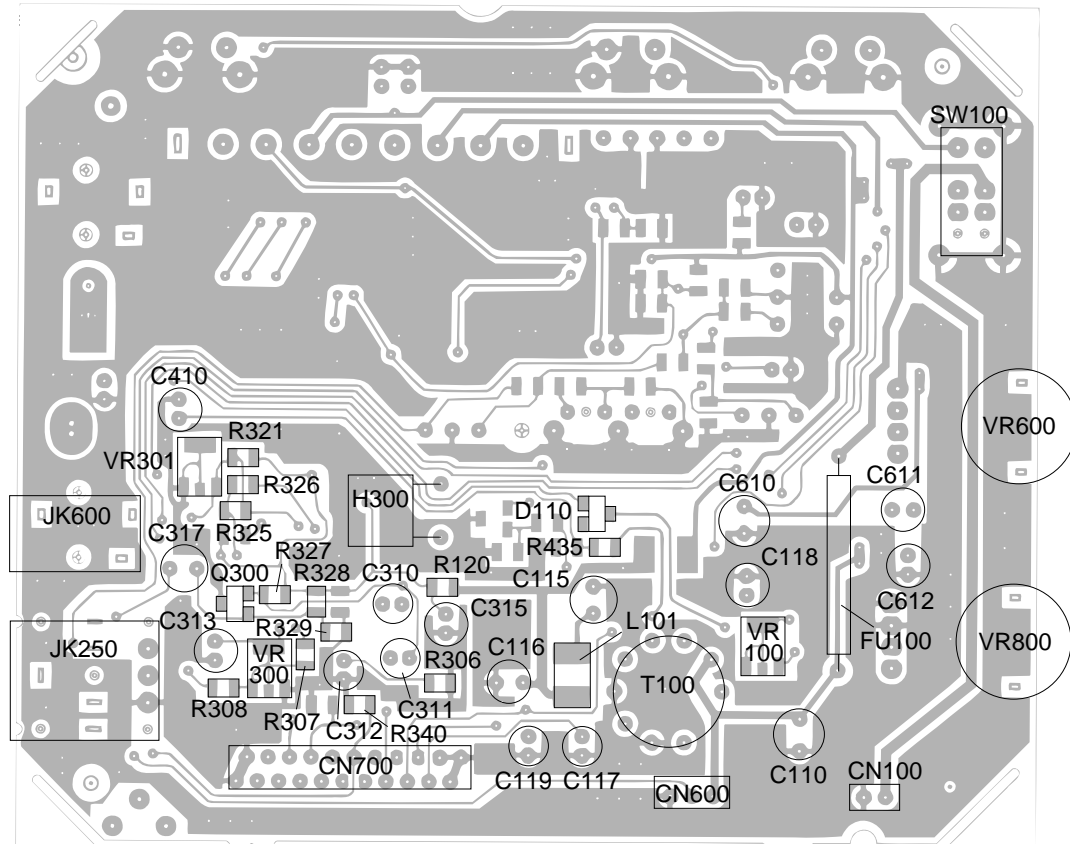


3) Equipment Connection / Procedure

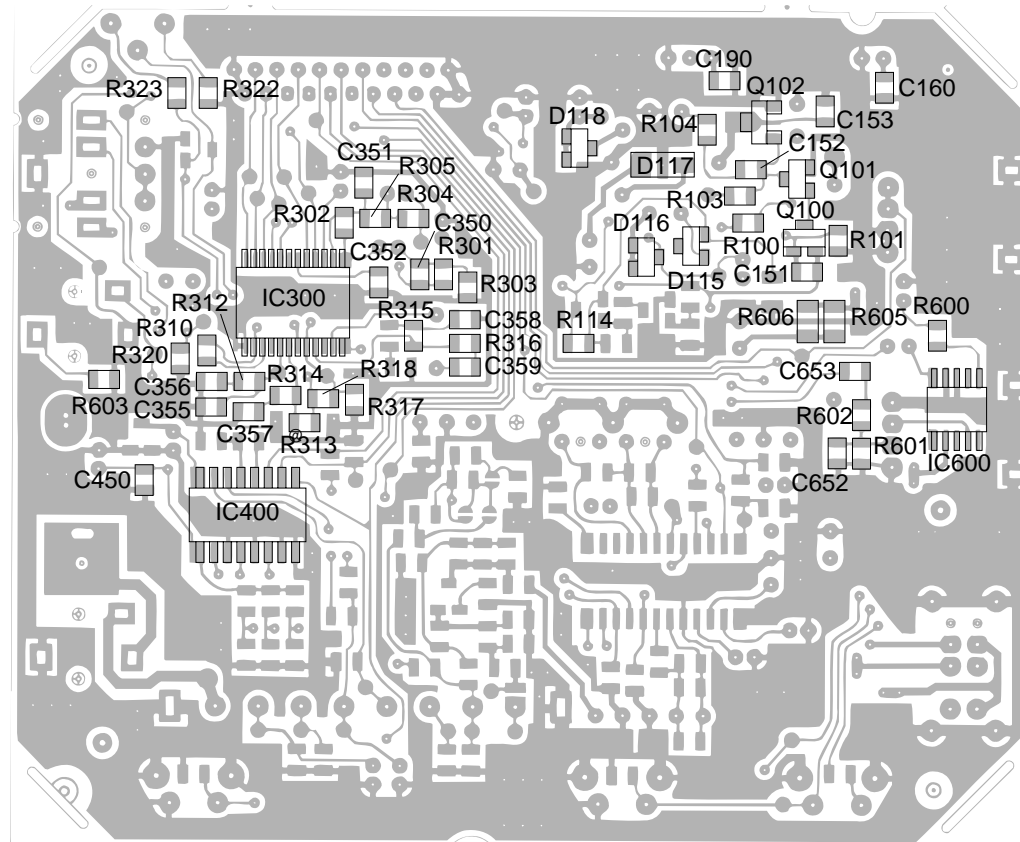
Clock Adjustment						
Input Connection	Input Point	Input Signal	Adjust	Output Connection	Output Point	Adjust for
_____	_____	_____	VR700	Voltmeter	TP6	Adjust for $2.00 \pm 0.05V$ reading on voltmeter.

PRINTED CIRCUIT BOARDS

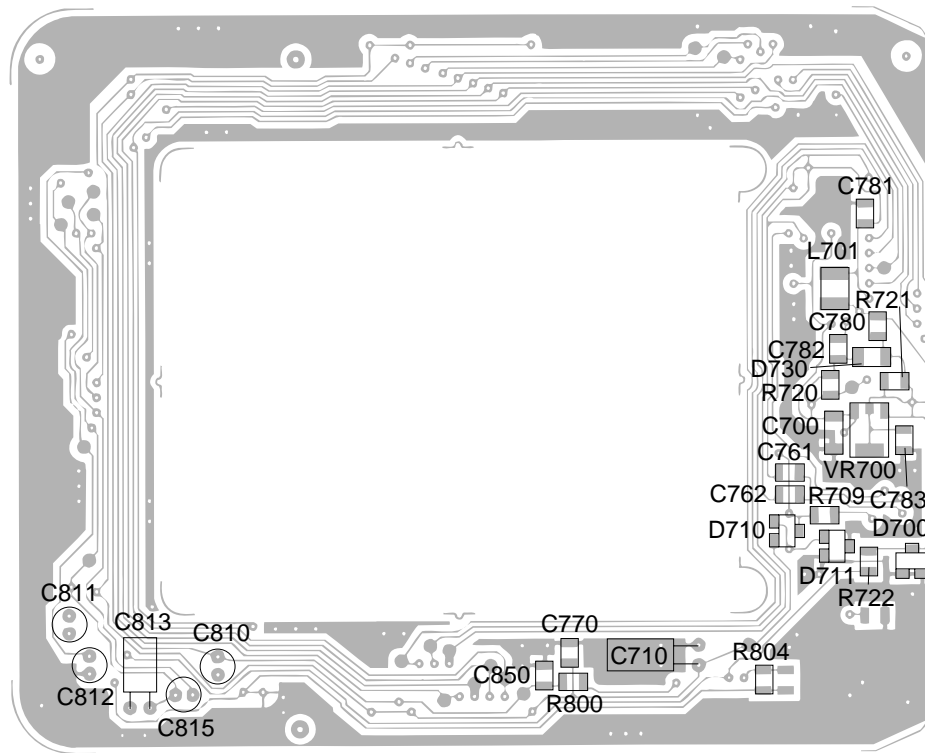
Linear PCB (Top View)



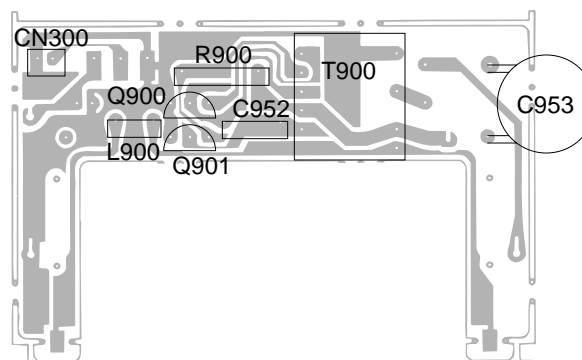
Linear PCB (Bottom View)



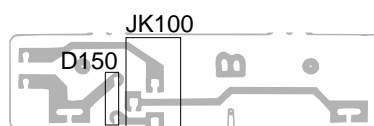
A/D PCB (Top View)



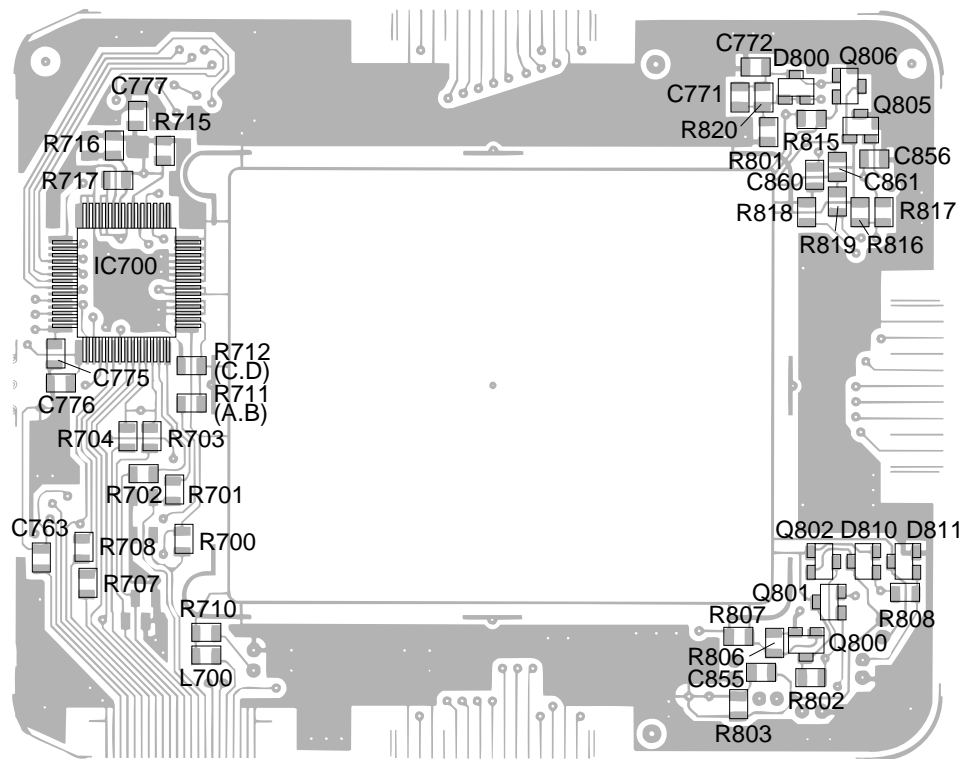
BL PCB (Top View)



DC PCB (Top View)

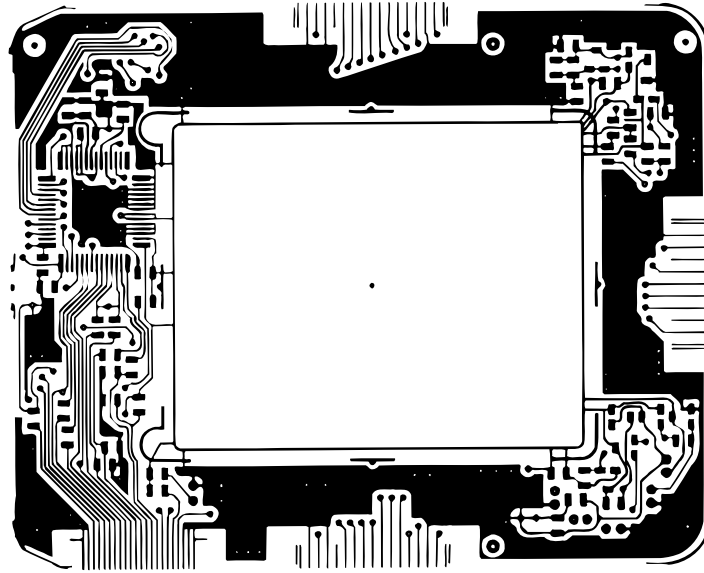


A/D PCB (Bottom View)



WIRING DIAGRAM

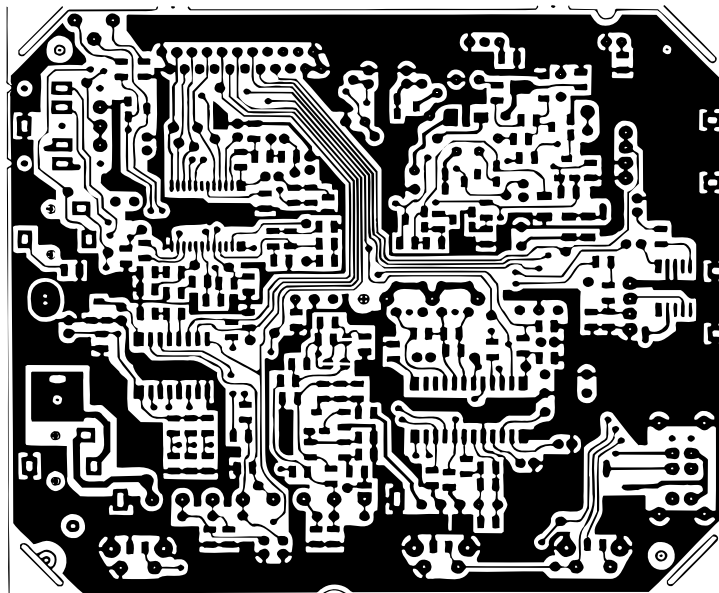
A/D PCB



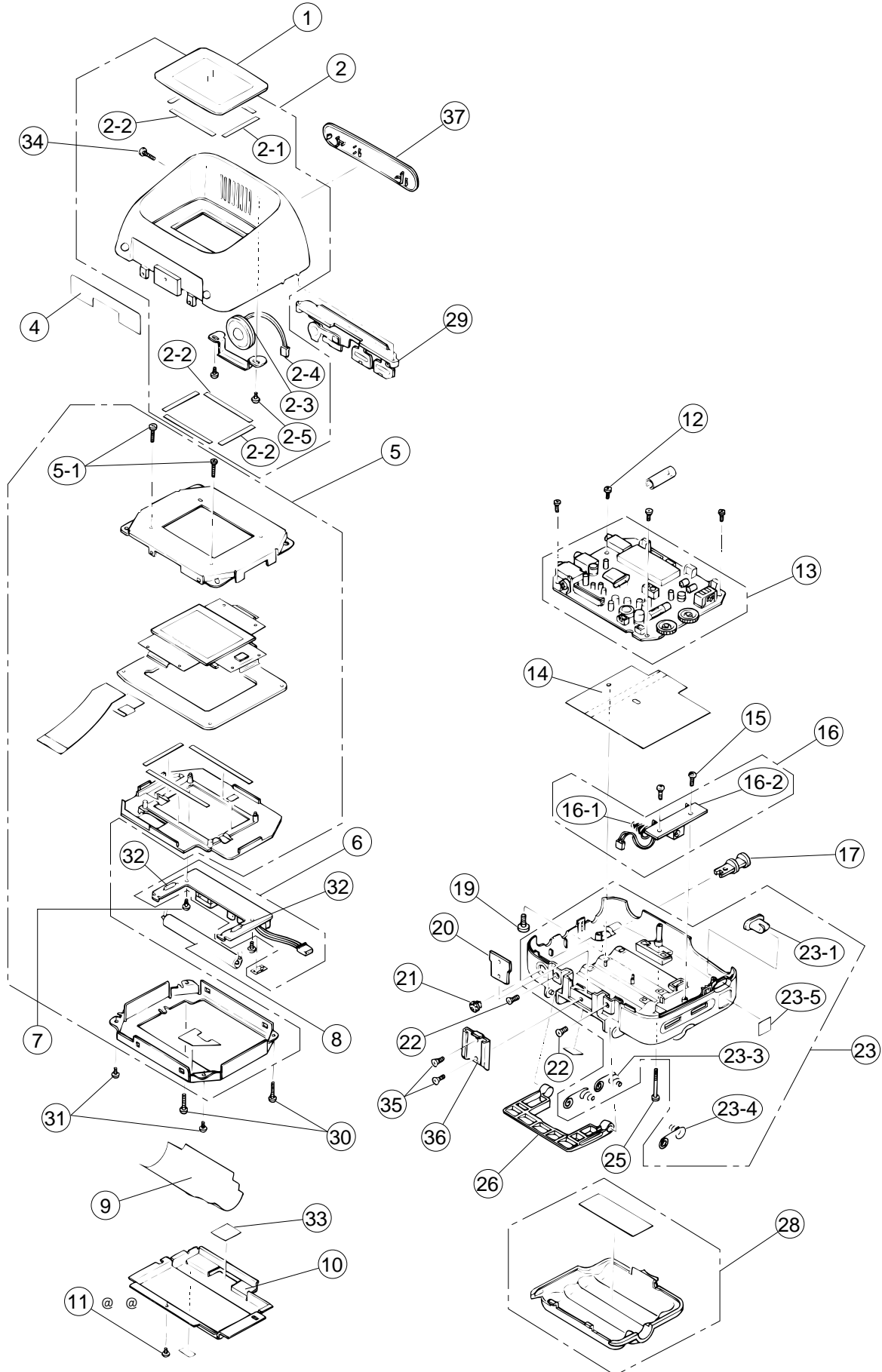
1 | 22

Linear PCB

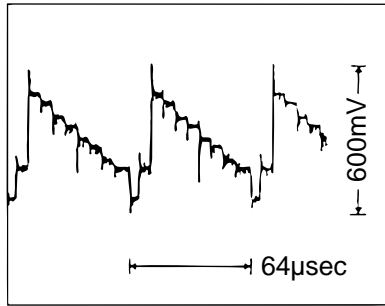
1 | 22



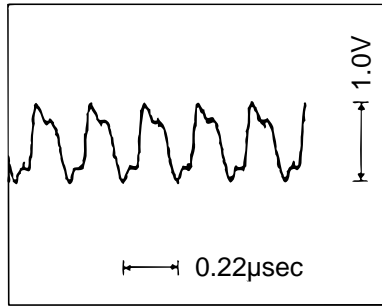
EXPLODED VIEW / DISASSEMBLY



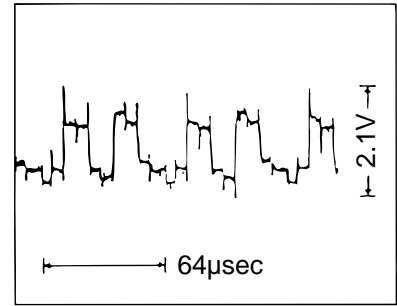
WAVEFORMS



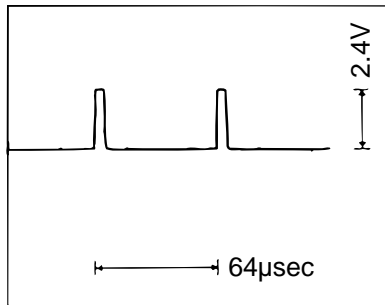
① IC300 Pin 1



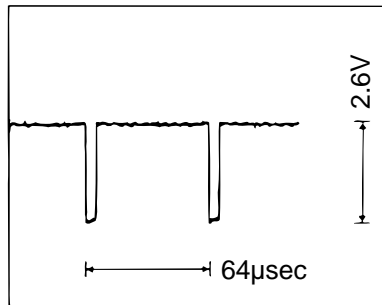
② IC300 Pin 23



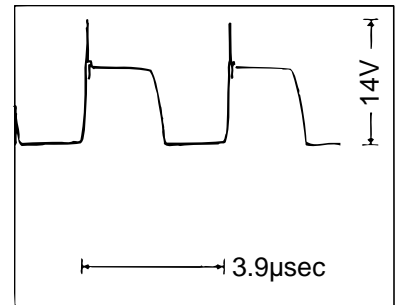
③ IC300 Pin 10, 11, 12



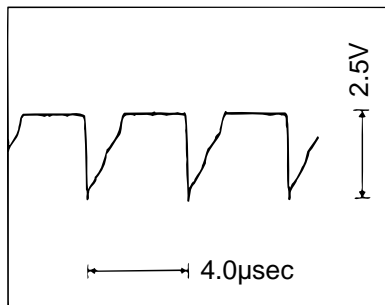
④ IC300 Pin 4



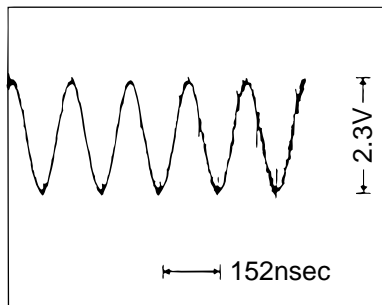
⑤ IC300 Pin 5



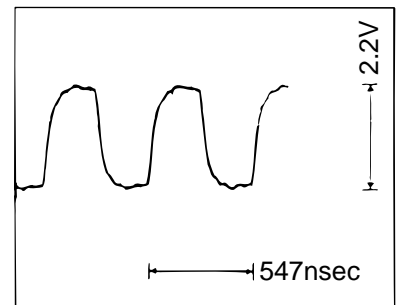
⑥ Q102 Collector



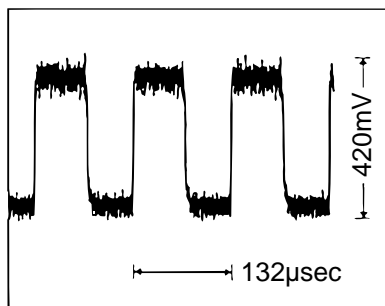
⑦ Q102 Base



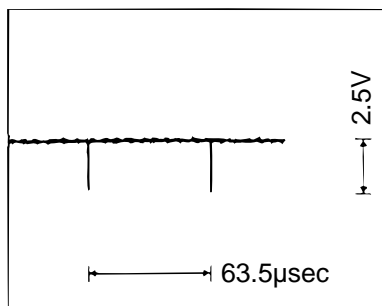
⑧ IC700 Pin 17



⑨ IC700 Pin 14



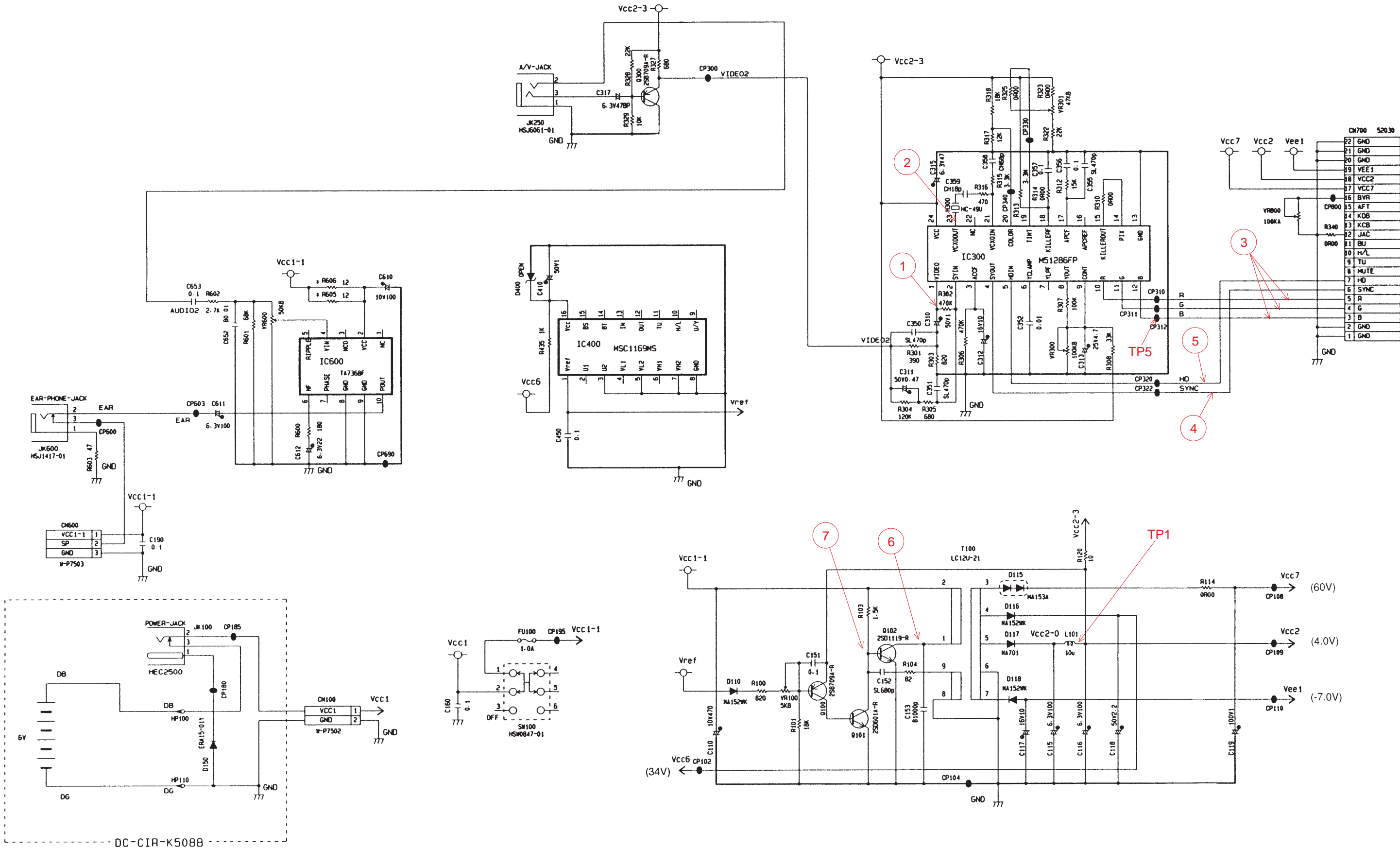
⑩ Q800 Base



⑪ IC700 Pin 12

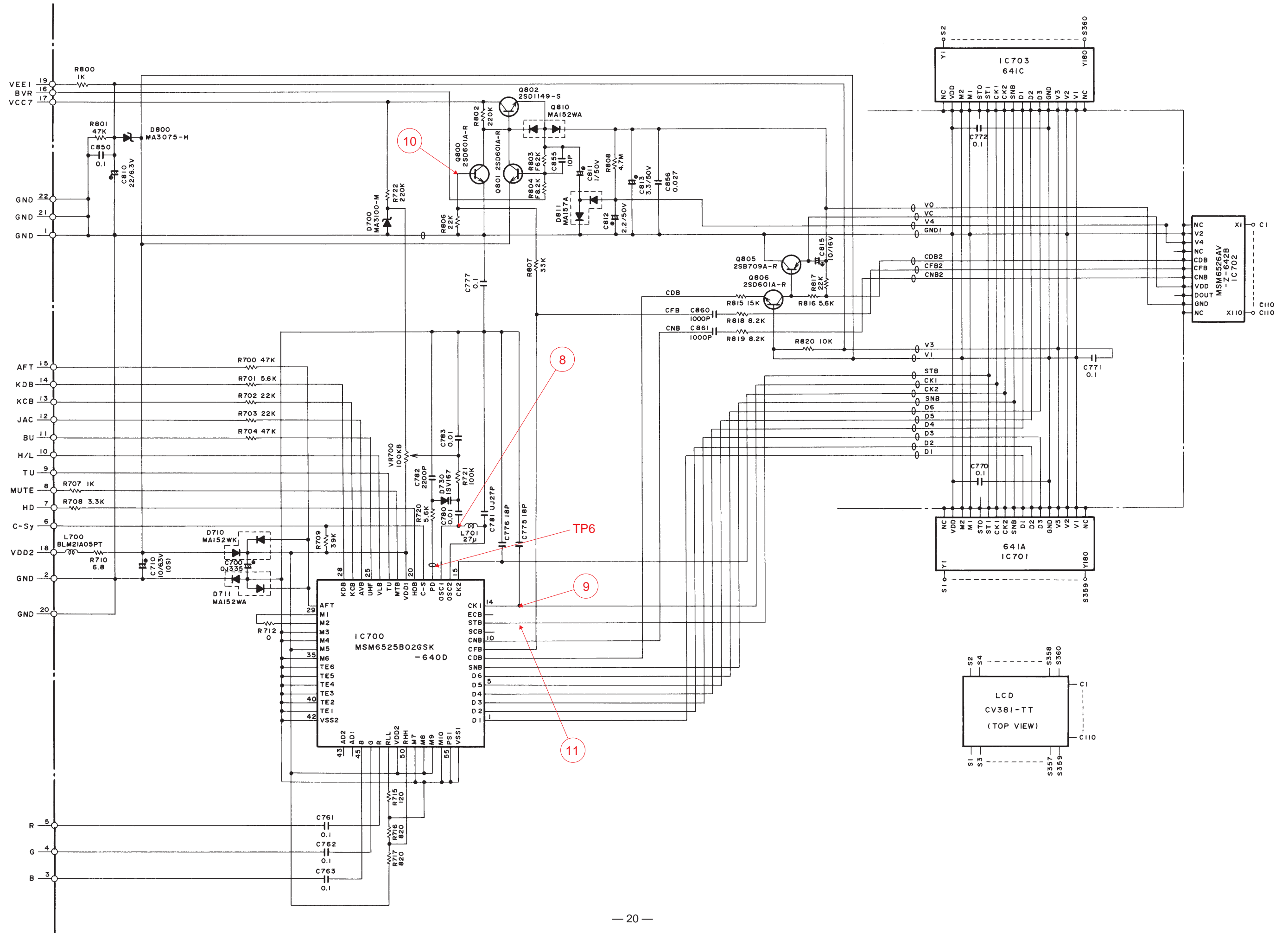
SCHEMATIC DIAGRAMS

Linear PCB



A/D PCB

L-CIRCUIT-K508



BL PCB

