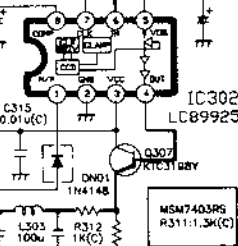


- * PAL-I
- R305 : 1K
 - C304 : 39P
 - L301 : 33u
 - C305 : 24P
 - C325 : 20P
 - Q309 : KSR1004

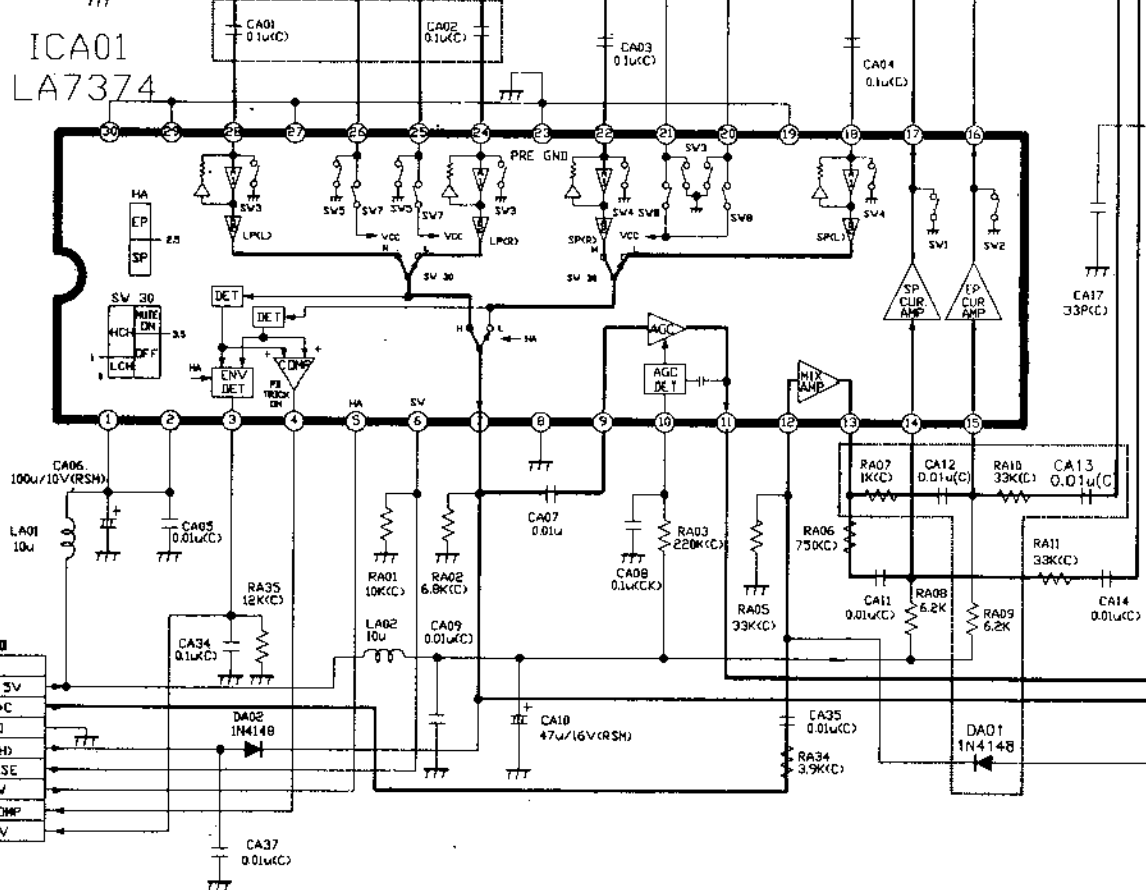


4H'D 1-7
2H'D 5-8
TO DECK

PA01

1	LP (L)
2	LP CDM
3	LP (R)
4	G N D
5	SP (R)
6	SP CDM
7	SP (L)
8	G N D

ICA01
LA7374



TO VIDEO

PA02

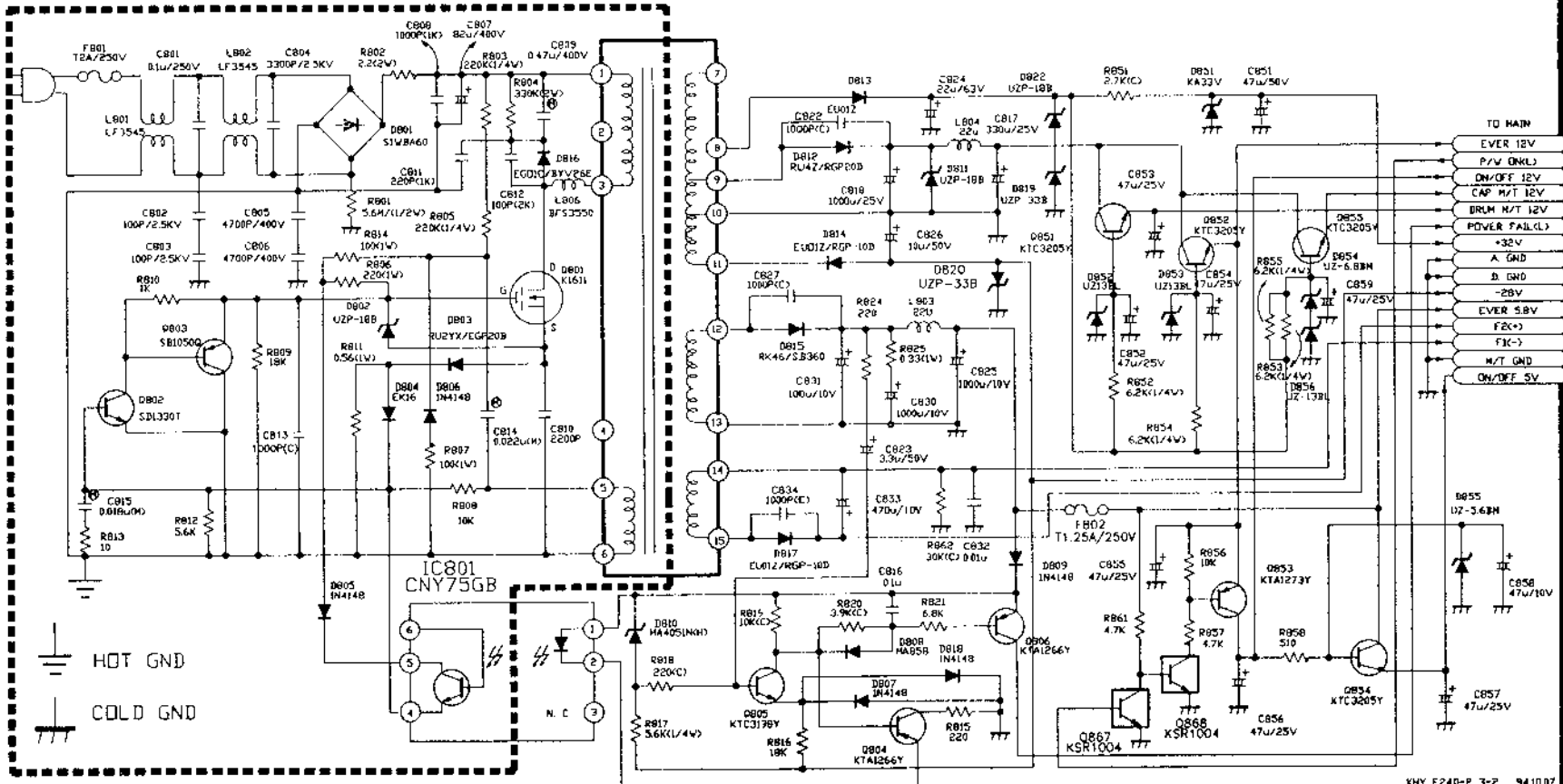
1	DN/DF 5V
2	REC Y+C
3	G N D
4	REC (H)
5	SV PULSE
6	HA SV
7	ENVE COMP
8	DC ENV

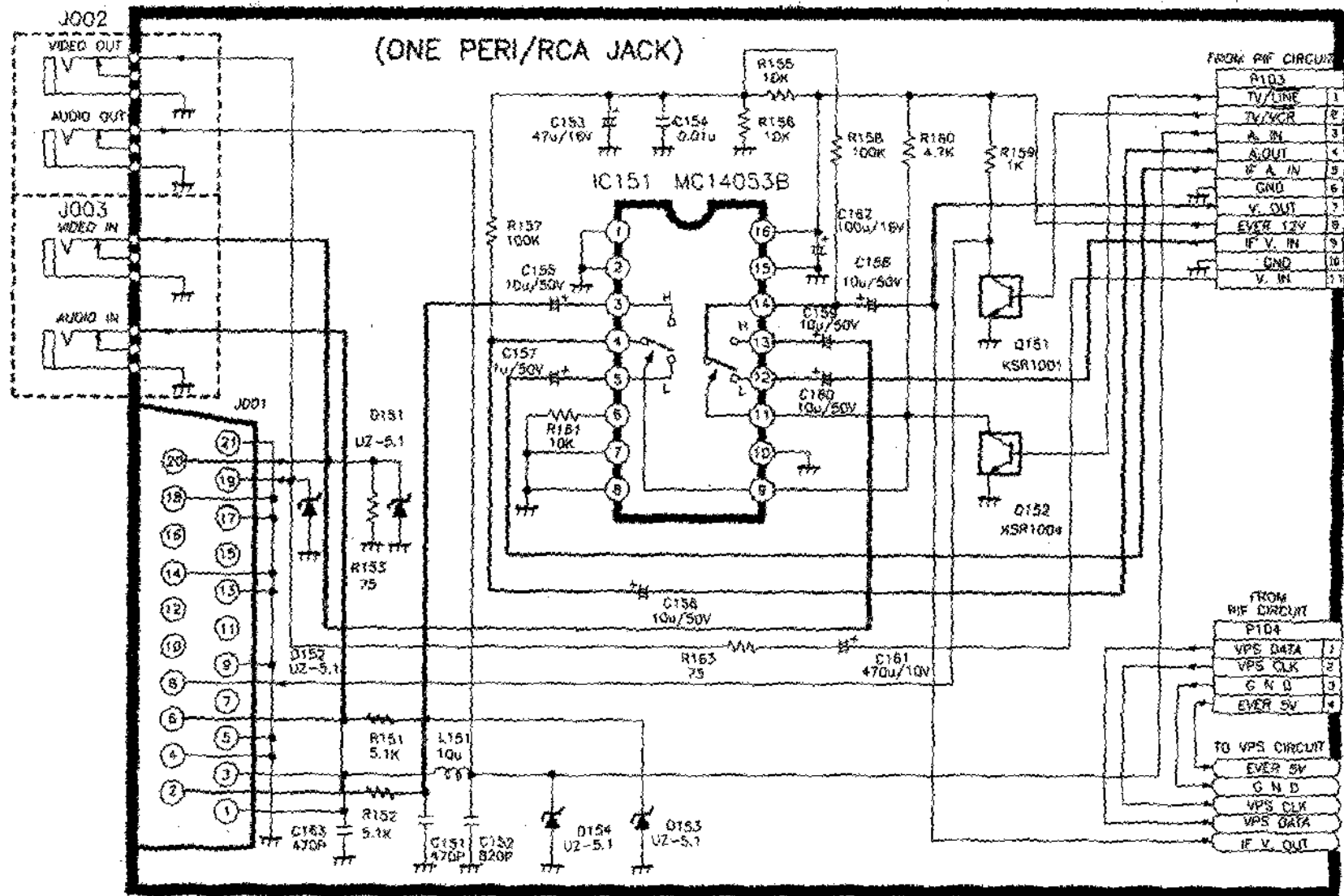
TO VIDEO

PA03

1	TRICK (H)
2	N C
3	G N D
4	PB Y FM
5	PB 5V
6	MESEAM (H)
7	G N D
8	PB (C)

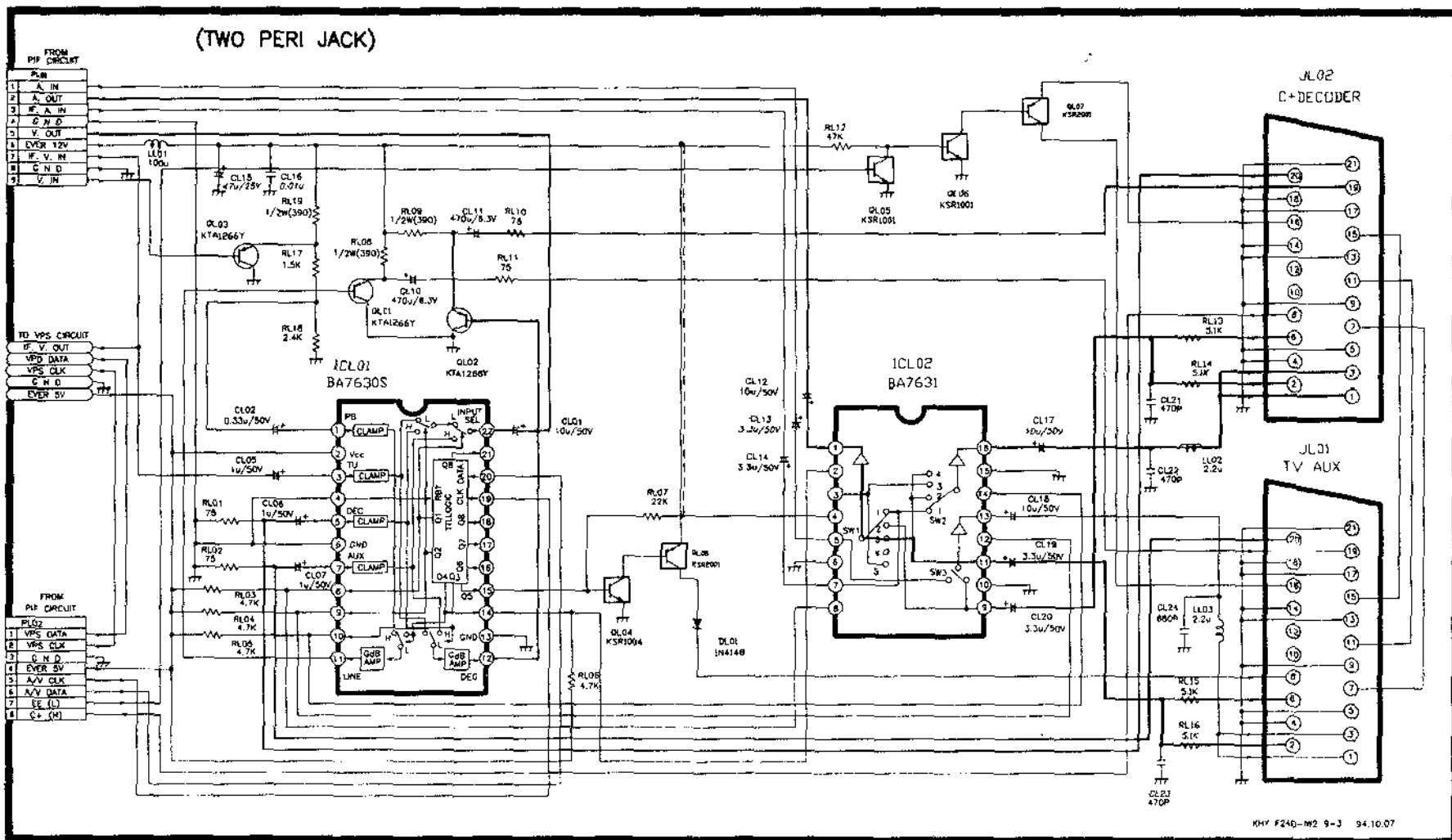
= PAL-1
CA22 : 100P
RA22 : 360
RA17 : 1.3K



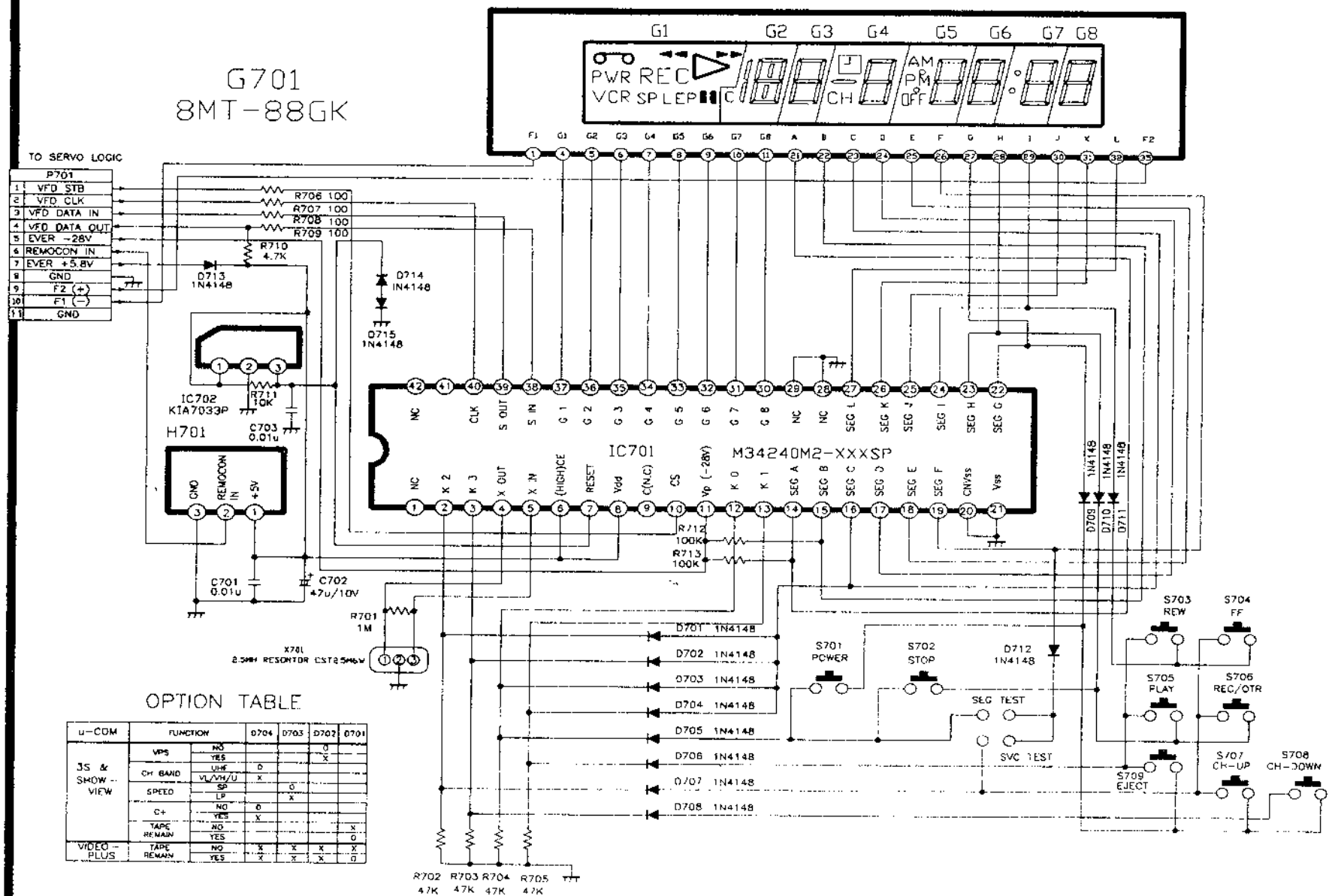


IN/OUT SW CIRCUIT II

— REC AUDIO SIGNAL
— REC VIDEO SIGNAL



LOGIC CIRCUIT

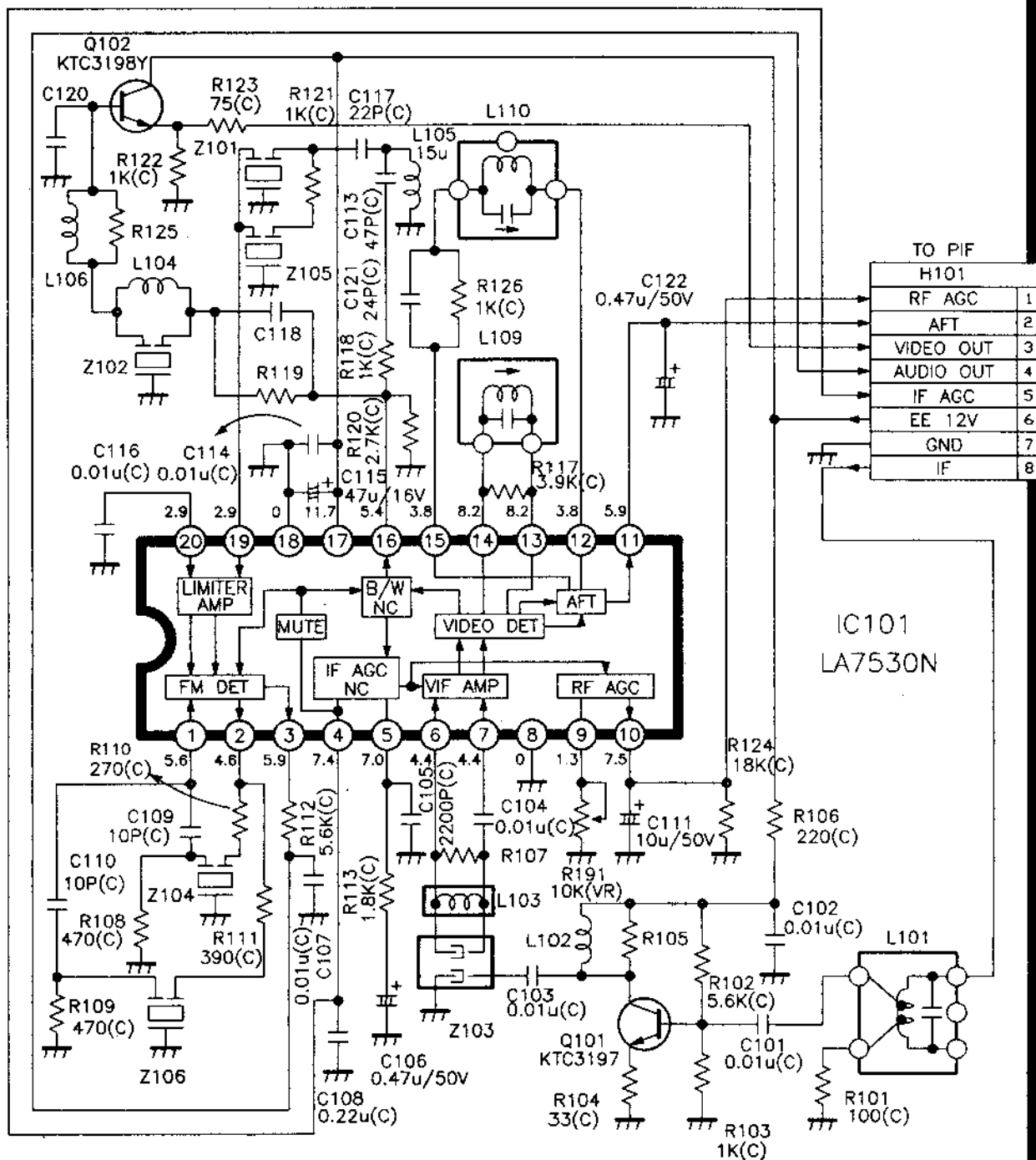


IF MODULE CIRCUIT

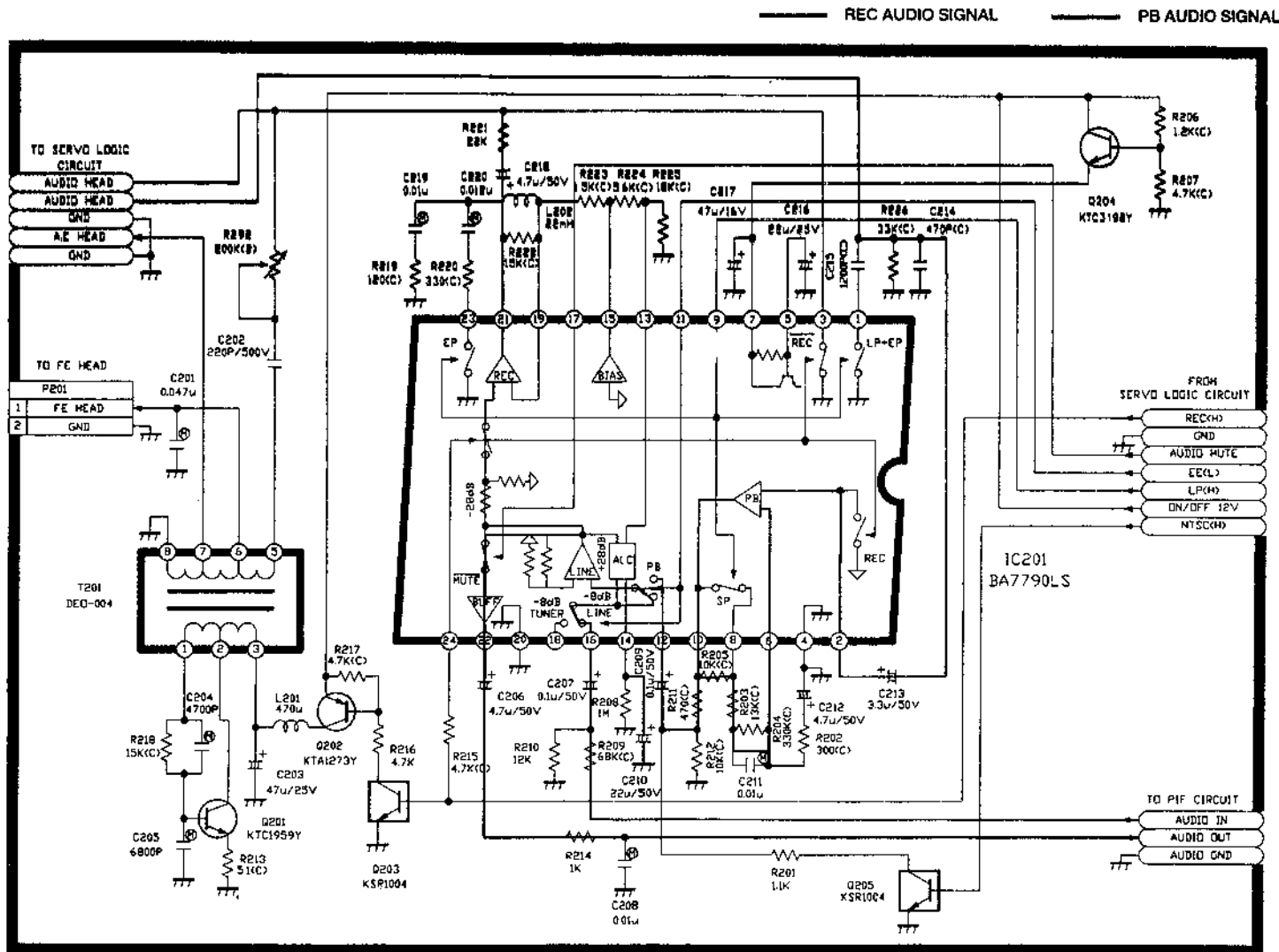
System	Loc.	C109	C110	C118	C120	L101	L102	L103	L104	L105	L106
B/G(FTZ)		10P(C)	X	X	27P(C)	DWS-301	TRF-3220	DWC-370	8.2uH	15uH	33uH
B		10P(C)	X	X	27P(C)	X	TRF-3220	DWC-370	8.2uH	15uH	33uH
I(U.K)		10P(C)	X	X	15P(C)	X	2.2uH	DWC-370	10uH	15uH	27uH
B/G and D/K		10P(C)	10P(C)			X	2.2uH	2.0uH			
B/H(AUS)		10P(C)	X			X	1.0uH	TRF-3812			
I/I(S.A)		10P(C)	X			X	R99K	DRF-1337			

System	Loc.	L109	L110	R101	R105	R107	R108	R109	R110	R111	R119	R121	R125
B/G(FTZ)		DWS-302	DWS-303	100(C)	820(C)	8.2K(C)	470(C)	X	270(C)	X	240(C)	X	5.6K(C)
B		DWS-302	DWS-303	100(C)	820(C)	8.2K(C)	470(C)	X	270(C)	X	150(C)	X	5.6K(C)
I(U.K)		DWS-302	DWS-303	100(C)	820(C)	1.0K(C)	470(C)	X	270(C)	X	270(C)	X	5.6K(C)
B/G and D/K		DWS-302	DWS-303	100(C)	470(C)	1.8K(C)	470(C)	470(C)	270(C)	390(C)		1K(C)	
B/H(AUS)		DWS-302	DWS-303	100(C)	470(C)	1.8K(C)	470(C)	X	270(C)	X		X	
I/I(S.A)		DWS-302	DWS-303	100(C)	470(C)	3.6K(C)	470(C)	X	270(C)	X		X	

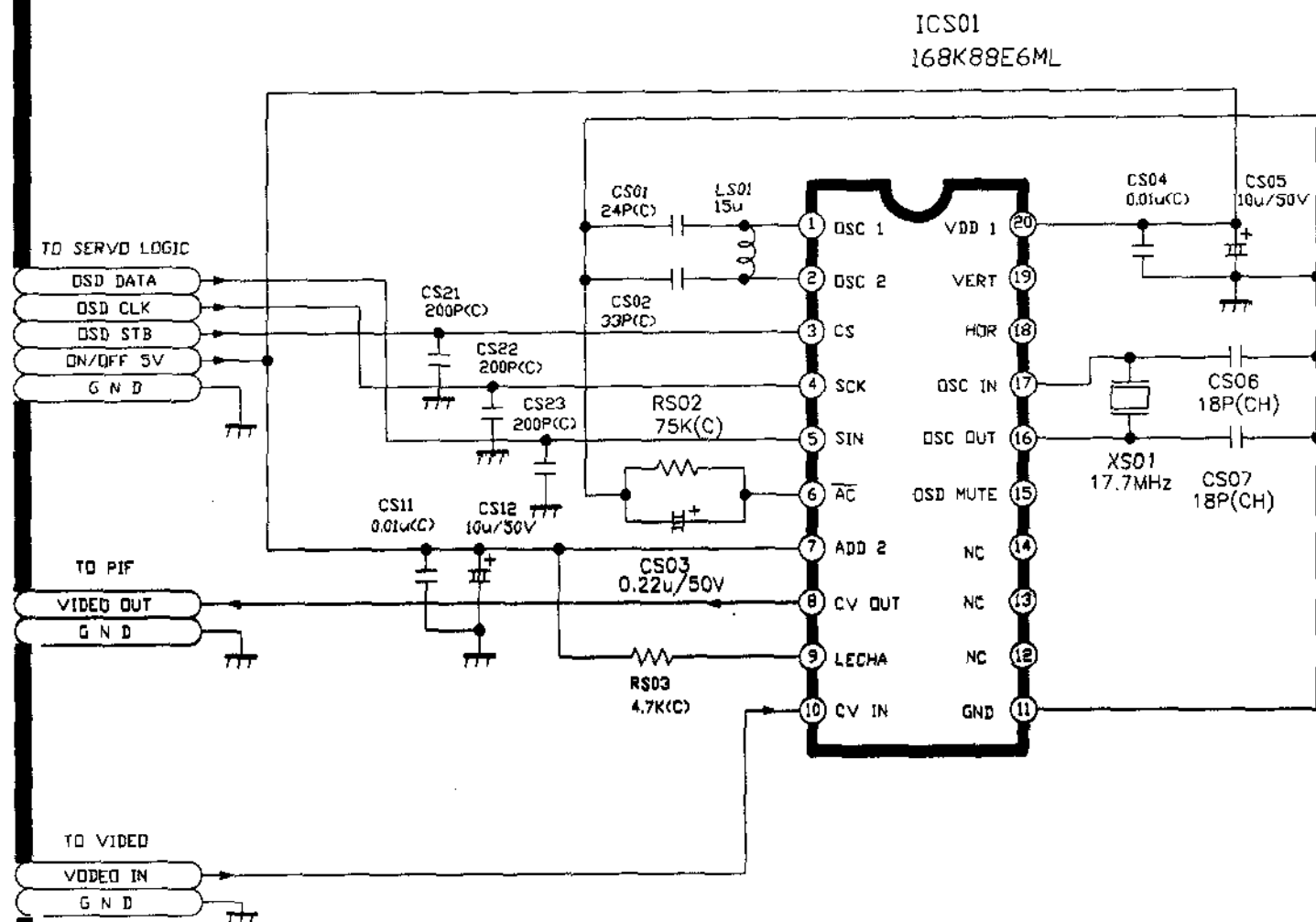
System	Loc.	Z101	Z102	Z103	Z104	Z105	Z106	
B/G(FTZ)		SFE 5.5MB	TPS 5.5MB	SAF38.9MZWB0Z	CDA 5.5MC26	X	X	
B		SFE 5.5MB	TPS 5.5MB	SAF38.9MZWB0Z	CDA 5.5MC26	X	X	
I(U.K)		SFE 6.0MB	TPS 6.0MB	SAF39.5MZB0Z	CDA 6.0MC26	X	X	
B/G and D/K		SFE 5.5MB	TPS 5.5MB	SAF38.0MZE80Z	CDA 5.5MC26	SFE 6.5MB	CDA6.5MC26	
B/H(AUS)		SFE 5.5MB	TPS 5.5MB	SAF36.9MZB0Z	CDA 5.5MC26	X	X	
I/I(S.A)		SFE 6.0MB	TPS 6.0MB	SAF38.9MW85Z	CDA 6.0MC26	X	X	



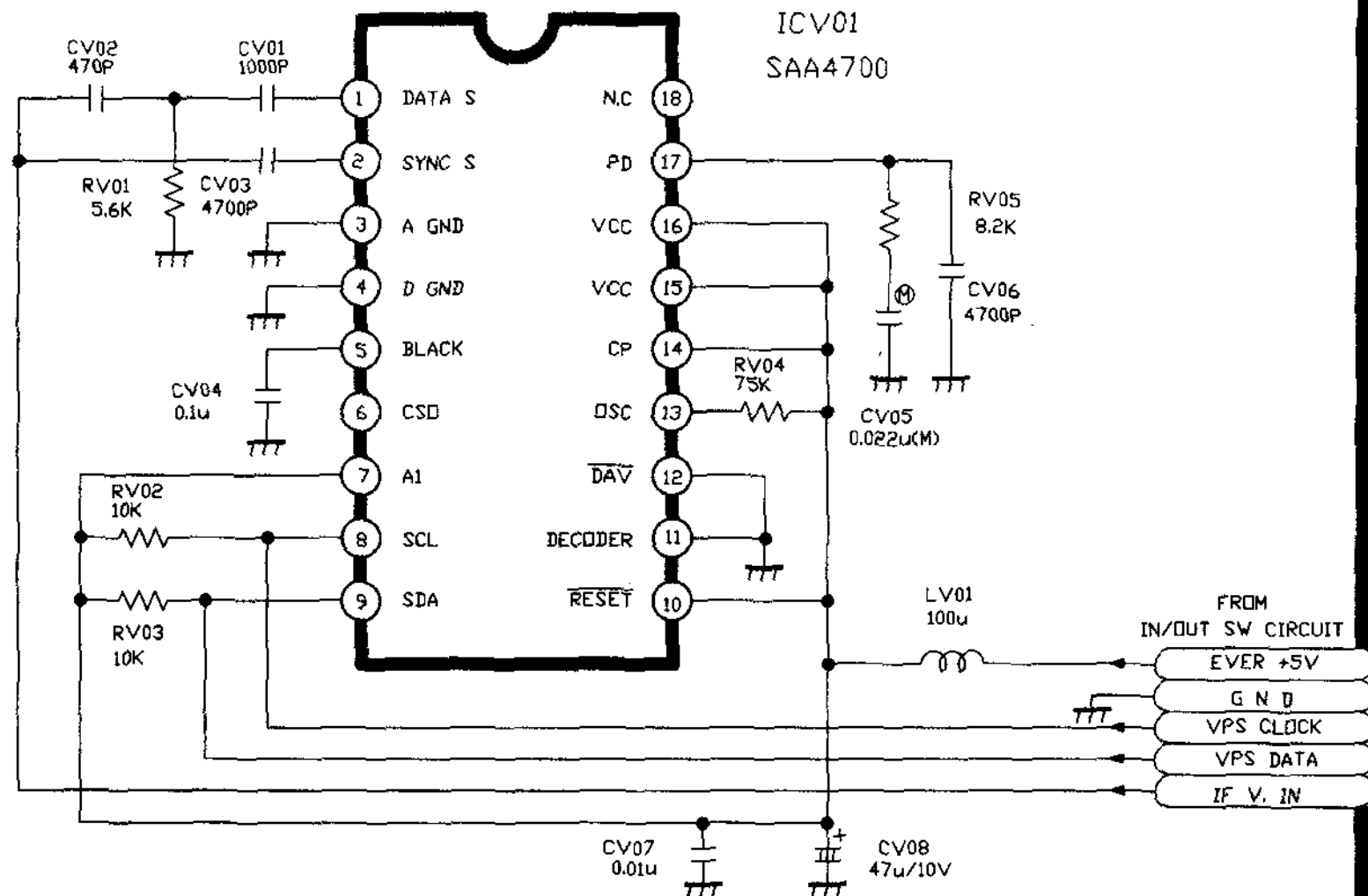
LINEAR AUDIO CIRCUIT



OSD CIRCUIT



VPS CIRCUIT



PIF CIRCUIT

