

## Service Manual

### TV

**CUC 1825**

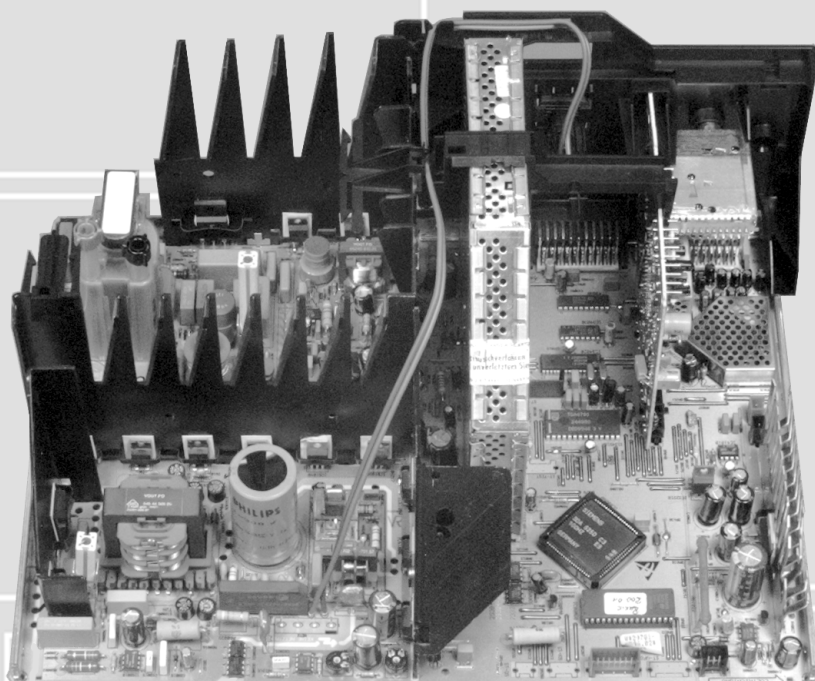
**CUC 1826**

**ST 70-278 IDTV**

**ST 63-270/8 IDTV**

**M72-270/8 IDTV/LOG**

**Elegance**



Zusätzlich erforderliche  
Unterlagen für den Komplettservice

Additionally required  
Service Manuals for the Complete Service

Ergänzung  
Supplement

**6**

Sach-Nr./Part No.  
72010 019 3600

**Service  
Manual**

**CUC 1825  
CUC 1826**

Sach-Nr./Part No.  
72010-019.30

Ergänzung  
Supplement

**1...3**

Sach-Nr./Part No.  
72010-019.31...33

**Service  
Manual**

**Sicherheit  
Safety**

Sach-Nr./Part No.  
72010-800.00

Btx \* 32700 #

Sachnummer  
Part Number 72010 019 3600

Änderungen vorbehalten  
Subject to alteration

Printed in Germany  
VK221 0398

**D**

Für diese Geräte gilt das Service Manual CUC 1825 / CUC 1826.  
Diese Ergänzung dokumentiert die Unterschiede bzw. zusätzlichen Bestückungen der Geräte.

Die Modulübersicht und die Sachnummern der einzelnen Bausteine entnehmen Sie bitte der Tabelle auf dieser Seite.

Grundlage für den Service sind:

- Service Manual "Sicherheit" (Sach-Nr. 72010-800.00)
- Service Manual CUC 1825 / CUC 1826 (Sach-Nr. 72010-019.30)
- 1. Ergänzung CUC 1826 / 1827 (Sach-Nr. 72010-019.31)
- 2. Ergänzung CUC 1805 / 1825 / 1826 (Sach-Nr. 72010-019.32)
- 3. Ergänzung CUC 1825 / 1826 (Sach-Nr. 72010-019.33)

## Inhaltsverzeichnis

	Seite
Modulübersicht .....	2
Technische Daten .....	3
Oszillogramme .....	4
Chassisplatte .....	5
• Color-Chassis .....	13
• Netz-Chassis .....	17
Ersatzteillisten .....	21

**GB**

For these TV sets the Service Manual CUC 1825 / CUC 1826 is applicable.

This Manual describes the differences and the additionally fitted modules of the TV receivers.

The Module List and the relevant part numbers are listed in the table on this page.

Basic instructions for servicing are given in the:

- Service Manual "Safety" (Part No. 72010-800.00)
- Service Manual CUC 1825 / CUC 1826 (Part No. 72010-019.30)
- 1st Supplement CUC 1826 / 1827 (Part No. 72010-019.31)
- 2nd Supplement CUC 1805 / 1825 / 1826 (Part No. 72010-019.32)
- 3rd Supplement CUC 1825 / CUC 1826 (Part No. 72010-019.33)

## Table of Contents

	Page
Module List .....	2
Technical Data .....	3
Oscillograms .....	4
Chassis Board .....	5
• Colour-Chassis .....	13
• Mains Chassis .....	17
Spare Parts Lists .....	21

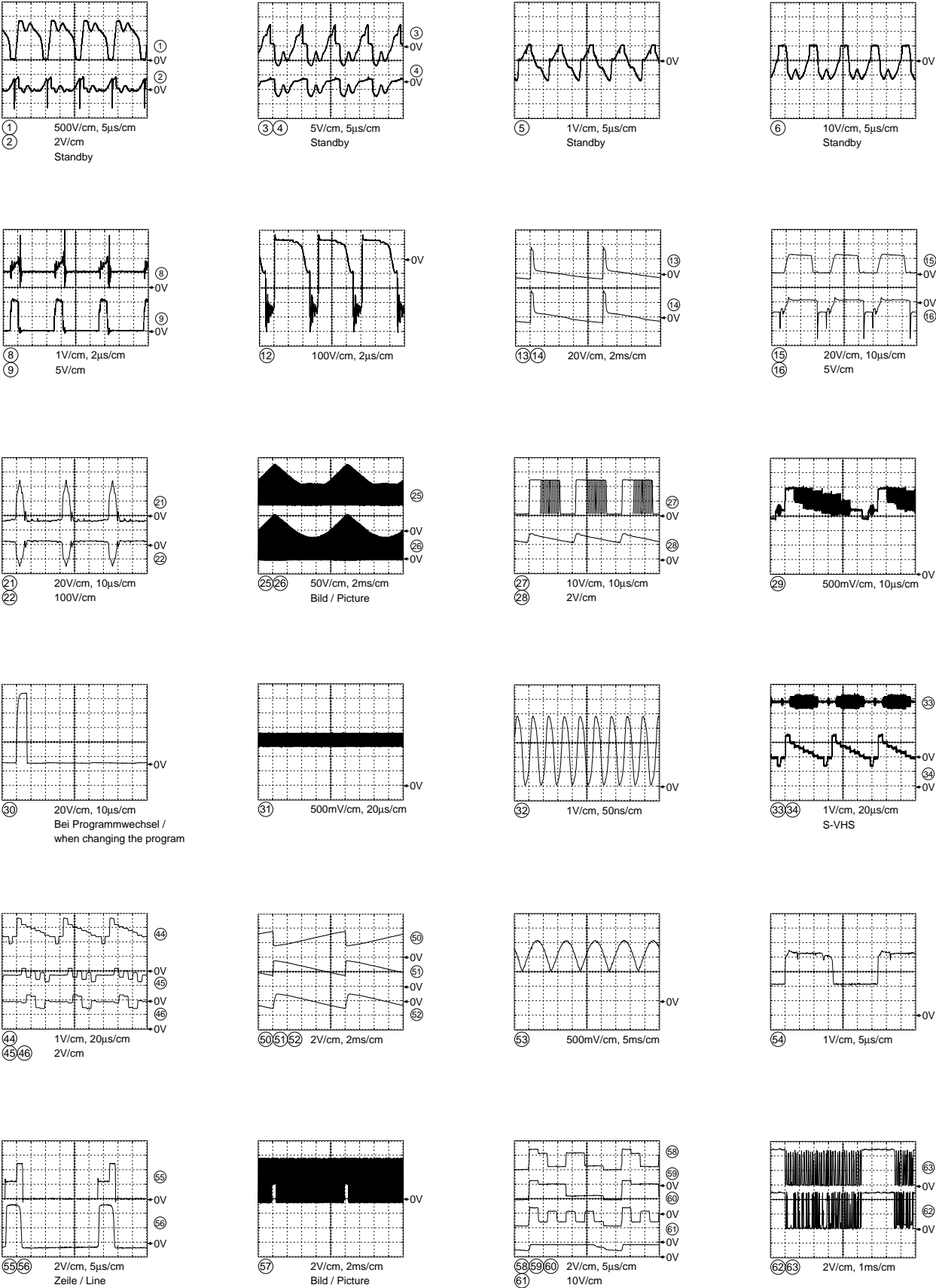
## Modulübersicht / Module List

	<b>M 72-270/8 IDTV/LOG Elegance</b>	<b>ST 70-278 IDTV</b>	<b>ST 63-270/8 IDTV</b>
Bestell-Nr. Order No.	G.CH 3626	G.CH 0675	G.CG 1681
Chassis	29701-096.12	29701-096.01	29701-096.04
Tuner	29504-201.31 ww 29504-201.21	29504-201.31 ww 29504-201.21	29504-201.31 ww 29504-201.21
Signal-Baustein Signal Module	29504-162.34 ww 29524-162.34	29504-102.34 ww 29524-102.34	29504-162.34 ww 29524-162.34
Bildrohrplatte CRT Panel	29305-122.10	29305-122.04	29305-122.04
Bedieneinheit Control Unit	–	29501-082.63	29501-082.63
Fernbedienung Remote Control	29642-061.01 TP 800	29642-061.01 TP 800	29642-061.01 TP 800
Feature-Box	29504-103.37 ww 29524-103.37	29504-103.37 ww 29524-103.37	29504-103.37 ww 29524-103.37
Netzschalterplatte Mains Switch Panel	29305-165.65	–	–
Netzstörplatte Mains Interference Elimination Board	29305-150.04	–	–
SAT Module nachrüstbar/ retrofitable	29504-106.24	29504-106.24	29504-106.24

Technische Daten / Technical Data

	M 72-270/8 IDTV/LOG Elegance	ST 70-278 IDTV	ST 63-270/8 IDTV
Bildröhre / Picture Tube			
Sichtbares Bild Visible picture	68cm	66cm	59cm
Bildschirmdiagonale Screen diagonale	72cm (29"), MEGATRON, Super Flat, Black Line S, CCS, Invar, Philips	70cm (28"), Black Line D, Philips	63cm (25"), Black Line D, Philips
Ablenkwinkel Deflection angle	110°	110°	110°
Bildwechselfrequenz Vertical frequency	100Hz	100Hz	100Hz
Elektronik / Electronic			
Programmspeicherplätze Programme positions	99 TV + 3 AV	99 TV + 3 AV	99 TV + 3 AV
Perfect clear, Blue stretch, Gamma adjustment	ja / yes	ja / yes	ja / yes
AV-Auswertung AV evaluation	jeder Programmplatz einstellbar / programmable for every programme position		
Tuner	Kabeltuner-Raster 8MHz für Hyperband / cabel tuner - 8MHz spacing for hyperband		
TV-Normen TV-Standard	PAL/SECAM/NTSC 4,43MHz, BG, I, DK/K/D, L/L', input AV: NTSC 3,58 MHz	PAL/SECAM/NTSC 4,43MHz, BG	PAL/SECAM/NTSC 4,43MHz, BG, I, DK/K/D, L/L', input AV: NTSC 3,58 MHz
Stereo Systeme Stereo systems	Deutsch A2/German A2 Nicom 5,85+6,52MHz	Deutsch A2 German A2	Deutsch A2/German A2 Nicom 5,85+6,52MHz
Videotext Teletext	8-Seiten TOP/FLOF Text mit VPS, Ost/West Europa, Türkei 8-pages TOP/FLOF text with VPS, East and Western Europe, Turkey	8-Seiten TOP/FLOF Text mit VPS, Ost/West Europa, Türkei 8-pages TOP/FLOF text with VPS, East and Western Europe, Turkey	8-Seiten TOP/FLOF Text mit VPS, Ost/West Europa, Türkei 8-pages TOP/FLOF text with VPS, East and Western Europe, Turkey
Musikleistung Music power	2x20W	2x20W	2x20W
Anschlüsse Front / Connections Front			
Kopfhörer Headphones	Stereo 3,5mm Klinke, regelbar stereo 3.5mm jack, individual	Stereo 3,5mm Klinke, regelbar stereo 3.5mm jack, individual	Stereo 3,5mm Klinke, regelbar stereo 3.5mm jack, individual
Video IN	1 x Cinch	1 x Cinch	1 x Cinch
Audio IN	2 x Cinch	2 x Cinch	2 x Cinch
Anschlüsse Rückwand / Connections Rear Panel			
Euro AV 1 (schwarz/black)	FBAS in-/output, RGB input, S-Video input, Megalogic	FBAS in-/output, RGB input, S-Video input, Megalogic	FBAS in-/output, RGB input, S-Video input, Megalogic
Euro AV 2 (orange)	FBAS in-/output, RGB input, S-Video input	FBAS in-/output, RGB input, S-Video input	FBAS in-/output, RGB input, S-Video input
Netzteil / Mains Stage			
Netzspannung (Regelbereich) Mains voltage (variable)	165 ... 265V	165 ... 265V	165 ... 265V
Netzfrequenz Mains frequency	50 / 60Hz	50 / 60Hz	50 / 60Hz
Öko-Schalter Eco switch	ja / yes	ja / yes	ja / yes
Leistungsaufnahme Power consumption	ca. 135W	ca. 120W	ca. 115W
Standby	ca. 7W	ca. 6W	ca. 6W

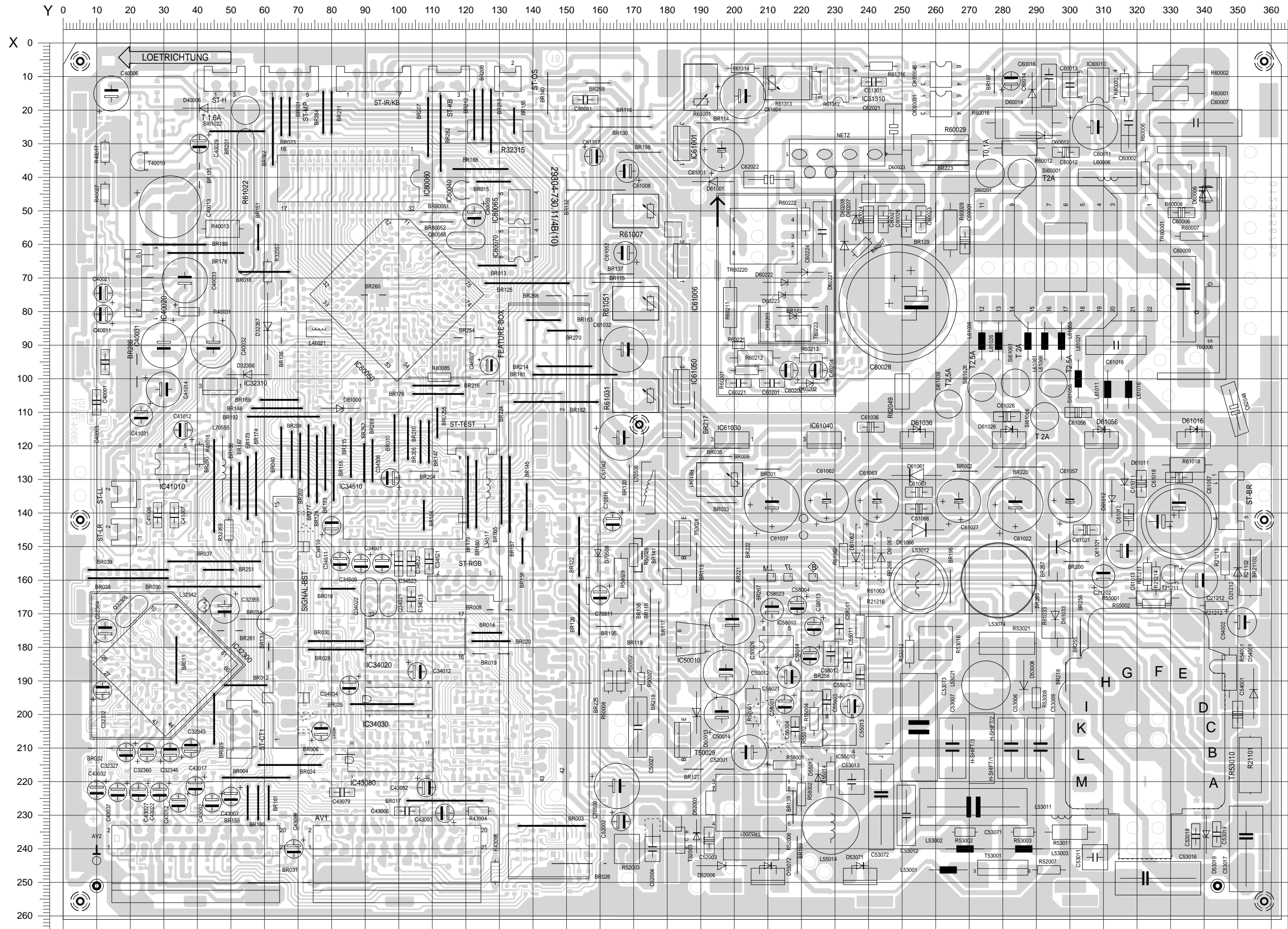
Oszillogramme / Oscillograms





## Chassisplatte / Chassis Board

**Bestückungsseite, Ansicht von oben / Component side, top view**



## Chassisplatte

## Koordinaten für die Bauteile der Bestückungsseite (Oberseite)

Pos.-Nr./ Pos. No.	Koordinaten/ Coordinates		Pos.-Nr./ Pos. No.	Koordinaten/ Coordinates		Pos.-Nr./ Pos. No.	Koordinaten/ Coordinates		Pos.-Nr./ Pos. No.	Koordinaten/ Coordinates		Pos.-Nr./ Pos. No.	Koordinaten/ Coordinates		Pos.-Nr./ Pos. No.	Koordinaten/ Coordinates		Pos.-Nr./ Pos. No.	Koordinaten/ Coordinates	
	X	Y		X	Y		X	Y		X	Y		X	Y		X	Y		X	Y
AN10	5	5	C50012	198	188	C61013	316	151	D61056	309	117	NETZ	231	33	R60207	238	61			
AN11	172	114	C50014	196	200	C61016	314	90	D61061	254	129	NETZAB.	213	75	R60211	199	79			
AN12	5	256	C50026	199	173	C61017	333	142	D61062	236	152				R60212	206	94			
AN13	358	256	C50027	171	204	C61018	333	129				OK60031	262	18						
AN14	358	142	C52001	205	211							OK60046	262	9						
						C61021	305	145	D61066	255	145				R60213	223	94			
AN15	358	5	C52002	166	231	C61022	284	138	D61067	244	153				R60221	201	90			
AN16	5	142	C52003	192	238	C61026	281	111	D70508	159	152				R60222	221	53			
AN30	10	251	C52004	176	240	C61027	267	137	D81000	83	109				R61001	190	13			
AN31	344	251	C53006	283	210	C61032	167	91							R61007	171	50			
			C53007	265	210				DX60006	340	45									
AV01	99	245				C61036	241	114	DX60023	247	45									
AV02	40	245				C61037	211	138				FEAT.B.	145	163						
			C53009	291	210	C61042	166	117							R21101	354	215			
			C53011	308	242	C61052	168	63	IC32300	30	185				R21102	354	156			
C21202	310	159	C53012	251	230	C61056	303	110	IC32310	47	102				R21211	323	158			
C21212	338	160	C53013	235	220				IC34020	105	177				R21212	344	167			
C32327	19	211	C53016	326	249				IC34030	100	195				R21213	346	155			
C32332	11	193				C61057	300	137	IC34510	102	141									
C32343	38	210				C61061	255	134							R21214	326	159			
			C53017	353	240	C61062	228	137							R21216	238	174			
C32346	31	211	C53018	338	236	C61063	242	137	IC40020	23	72				R32315	129	26			
C32355	48	168	C53019	344	236	C61066	255	139	IC41010	33	125				R32357	61	68			
C32360	25	211	C53071	271	228				IC43080	97	213				R32359	49	145			
C32364	12	175	C53072	244	228				IC50010	187	177									
C34012	106	187				C61301	242	12	IC55010	231	206				R40013	48	55			
			C53073	255	204	C61317	158	33							R40017	13	33			
C34013	104	166	C54001	350	200	C62021	247	26							R40027	13	45			
C34034	86	191	C54002	351	173	C62022	210	41	IC58010	213	180				R40031	38	80			
C34501	95	155	C55003	228	196	C62048	349	109	IC60010	308	13				R41016	41	123			
C34506	98	130	C55004	218	204				IC61001	184	30									
C34509	89	155							IC61006	184	65				R43004	124	229			
			C55011	234	184	C70509	164	221	IC61030	199	118				R43098	129	247			
C34510	80	144	C55012	238	189	C70511	160	164							R50007	166	190			
C34511	83	154	C55013	235	197	C70516	164	142							R50008	163	190			
C34521	109	154	C58001	215	197	C80059	123	51	IC61040	227	118				R50027	172	189			
C34522	104	155	C58004	219	167	C80081	156	17	IC61050	184	102									
C34523	100	155							IC61310	231	13									
						D21212	350	158	IC80040	118	44				R50028	170	152			
C40001	13	95	C58011	231	174	D32356	55	99	IC80050	99	75				R50029	166	159			
C40003	10	107	C58012	229	182	D32357	61	84							R52001	206	198			
C40006	14	15	C58013	224	174	D40006	42	19	IC80060	85	40				R52003	168	240			
C40011	12	81	C58014	223	183	D50013	189	199	IC80065	136	49				R52006	205	240			
C40013	31	49	C58021	216	189				IC80070	136	60									
						D52003	189	236				J07	216	159						
C40021	12	75	C58023	211	169	D52006	196	245							R52007	294	246			
C40029	41	30	C60001	269	59	D53008	286	191							R53002	269	235			
C40031	30	89	C60002	317	24	D53019	341	236							R53003	286	235			
C40032	45	89	C60006	333	51	D53071	238	247							R53008	290	195			
C40033	36	71	C60007	338	24										R53011	300	235			
						D53072	210	247												
C41006	28	141	C60009	334	76	D54001	355	194							R53012	252	181			
C41007	33	141	C60011	307	25	D55012	225	219							R53016	260	179			
C41012	36	116	C60012	299	33	D60006	342	45							R53021	281	179			
C41014	30	103	C60013	300	13	D60012	291	28							R54001	347	188			
C41031	23	111	C60014	282	11										R55001	325	165			
						D60014	289	15												
C43002	45	226	C60016	294	10	D60023	250	42							R55002	325	167			
C43007	50	224	C60023	256	53	D60202	222	101							R55004	224	201			
C43012	35	226	C60024	240	53	D60207	217	81							R55012	223	201			
C43017	40	221	C60026	251	54	D60207	236	53							R55014	229	217			
C43022	29	223	C60027	244	53										R58001	215	215			
						D60208	233	60												
C43027	23	223	C60028	249	78	D60221	221	68							R58002	220	224			
C43032	10	222	C60201	211	101	D60222	215	71							R60001	330	15			
C43037	17	223	C60202	216	98	D60223	215	75							R60002	330	9			
C43066	102	229	C60204	225	98	D61001	194	41							R60006	322	39			
C43079	83	223	C60221	201	101										R60007	336	58			
						D61011	316	131												
C43082	108	221	C60224	226	56	D61012	313	136							R60008	331	41			
C43084	76	205	C61001	196	32	D61016	337	117							R60012	285	31			
C43093	114	230	C61004	202	16	D61021	298	150							R60016	286	24			
C43098	69	240	C61008	168	38	D61026	282	117							R60028	264	56			
C46007	127	96	C61011	321	131										R60029	261	32			
						D61033	296	171												
			C61012	317	141	D61036	254	117	MT60223	217	84				R60032	316	13			
															R60201	204	98			

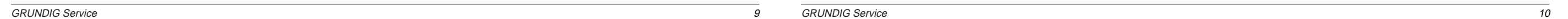
## Koordinaten für die Bauteile der Lötseite (Unterseite)

Pos.-Nr./ Pos. No.	Koordinaten/ Coordinates		Pos.-Nr./ Pos. No.	Koordinaten/ Coordinates		Pos.-Nr./ Pos. No.	Koordinaten/ Coordinates		Pos.-Nr./ Pos. No.	Koordinaten/ Coordinates		Pos.-Nr./ Pos. No.	Koordinaten/ Coordinates		Pos.-Nr./ Pos. No.	Koordinaten/ Coordinates		
	X	Y		X	Y		X	Y		X	Y		X	Y		X	Y	
CBR02	130	77	CBR39	130	197	CBR56	9	167	CC32309	41	185	CC32339	30	193	CC34018	100	168	
CBR03	234	81	CBR40	91	213	CBR57	73	185	CC32310	38	186	CC32341	36	181	CC34021	99	164	
CBR04	153	183	CBR41	151	251		CC32311	26	155	CC32345	48	179	CC34022	94	164			
CBR09	158	181	CBR42	128	221		CC32312	21	161	CC32347	29	205	CC34023	99	175			
CBR23	83	107		CBR43	62		246	CC32313	19	157	CC32348	24		188	CC34026	91	175	
CBR24	49	122	CBR44	137	204	CBR61	96	119	CC32314	35	186	CC32350	46	169	CC34027	93	187	
	CBR25	85	138	CBR45	141	220	CBR62	9	89	CC32315	32	186	CC32355	47	105	CC34028	98	195
	CBR26	84	116	CBR46	84	215		CBR63	8	100	CC32365	11	185	CC32370	46	108	CC34031	90
	CBR27	161	227	CBR47	111	187	CC21206	317	161	CC32316	11	161	CC34006	128	173	CC34032	95	195
CBR29	140	158	CBR48		129	181		CC32317	20	166	CC34007	117	176	CC34033	90	196		
CBR30	145	158	CBR49	126	181	CC21222	139	140	CC32318	15	172	CC34008	114	176	CC34036	108	195	
	CBR31	72	153	CBR50	115	226	CC32301	11	181	CC32326	45	198	CC34011	102	177	CC34037	99	187
	CBR32	120	51	CBR51	130	209	CC32302	15	177	CC32328	25	203	CC34014	106	168	CC34038	96	187
	CBR33	58	148	CBR52	107	213	CC32303	22	183	CC32331	48	198	CC34016	105	177	CC34041	114	205
CBR36	138	208	CBR53		105	184	CC32333	9	194	CC34017	94	175	CC34042	121	215			
CBR37	138	213	CBR54	138	200	CC32306	25	182	CC32336	22	204	CC34018	104	175	CC34046	114	215	
	CBR38	88	191	CBR55	115	156	CC32307	38	152	CC32337	19	204	CC34019	97	175	CC34054	124	215
						CC32308	35	161	CC32338	28	192							

Pos.-Nr./ Pos. No.	Koordinaten/ Coordinates		Pos.-Nr./ Pos. No.	Koordinaten/ Coordinates		Pos.-Nr./ Pos. No.	Koordinaten/ Coordinates		Pos.-Nr./ Pos. No.	Koordinaten/ Coordinates		Pos.-Nr./ Pos. No.	Koordinaten/ Coordinates		Pos.-Nr./ Pos. No.	Koordinaten/ Coordinates	
	X	Y		X	Y		X	Y		X	Y		X	Y		X	Y
CC34056	129	215	CC61002	195	27	CR21222	136	140	CR40031	36	90	CR46014	70	81	CR80039	73	52
			CC61003	198	23				CR40032	39	90	CR46022	111	92			
CC34062	117	192	CC61006	187	57	CR21223	144	106	CR40033	18	125	CR46024	114	88	CR80040	71	52
CC34063	126	188	CC61007	185	54	CR32301	57	145	CR40034	23	147				CR80041	69	52
CC34067	125	192	CC61022	156	79	CR32302	9	173	CR41001	33	148				CR80042	68	58
CC34068	127	192				CR32307	35	157				CR46026	107	81	CR80043	69	36
CC34077	119	204				CR32309	37	165				CR46031	104	130	CR80044	71	36
			CC61028	196	114				CR41002	37	142						
CC34086	124	203	CC61031	200	114				CR41003	23	152						
CC34087	127	203	CC61038	222	124	CR32310	28	164	CR41004	26	141				CR80046	73	36
CC34502	113	130	CC61041	227	114	CR32311	21	157	CR41005	30	148				CR80049	135	59
CC34503	110	130	CC61051	185	89	CR32313	11	157	CR41006	30	135				CR80050	135	56
CC34504	108	130				CR32314	19	161				CR46035	80	90	CR80051	113	49
			CC61058	186	94	CR32315	22	171				CR46036	75	90	CR80052	111	53
			CC61311	231	10				CR41007	37	136						
CC34507	98	130	CC70501	154	130	CR32317	13	167	CR41010	27	148				CR80053	75	92
CC34517	112	164	CC70502	139	183	CR32319	76	198	CR41011	43	111				CR80055	114	61
CC34518	98	139	CC70503	146	188	CR32320	72	198	CR41031	14	118				CR80059	80	93
CC34519	101	139				CR32325	69	175	CR43001	25	221				CR80060	122	44
CC34520	105	139				CR32334	39	148				CR50004	163	183	CR80066	80	99
			CC70506	152	136				CR43002	49	245						
			CC70507	155	136				CR43003	90	230				CR55003	231	183
			CC70508	152	196	CR32335	41	148	CR43004	38	245				CR55006	235	214
CC34524	131	135	CC70512	145	143	CR32339	13	204	CR43005	32	245				CR55007	232	192
CC34526	127	129	CC70513	145	148	CR32340	15	204	CR43006	9	205				CR55011	234	194
CC40002	20	86				CR32360	28	211				CR55016	214	206	CR80067	80	102
CC40004	11	86				CR32364	28	188				CR58004	217	197	CR80069	105	96
			CC80016	136	63				CR43008	82	230				CR80070	99	86
			CR80051	105	44				CR43009	132	252				CR80071	109	104
CC40012	24	81	CC80053	70	93	CR34001	93	180	CR43010	134	252				CR80075	106	76
CC40013	32	60	CC80055	119	58	CR34002	98	179	CR43011	45	216						
CC40014	32	65	CC80056	124	58	CR34003	112	176	CR43013	71	234				CR58013	219	183
CC40017	13	33				CR34004	107	176				CR58014	225	184	CR58015	220	194
CC40022	30	73	CC80058	98	64	CR34006	131	173	CR43014	141	252				CR58016	208	180
			CC80059	115	57				CR43018	78	232				CR58022	209	173
CC40027	10	33	CC80065	136	53	CR34007	119	178	CR43019	138	252						
CC40028	12	22	CC80069	102	86	CR34013	102	164	CR43021	10	215				CR60013	301	20
CC41008	25	135	CC80070	138	67	CR34017	97	175				CR60031	314	22	CR60033	272	14
CC41009	40	130				CR34033	92	196				CR60046	318	11	CR60063	318	11
CC41013	34	125	CC80074	105	81	CR34035	86	185	CR43023	30	231				CR60202	216	98
			CC80079	126	69				CR43026	8	215						
			CC80089	109	72	CR34036	105	194	CR43028	22	231						
CC41017	25	131	CC81001	99	81	CR34040	110	180	CR43031	14	216						
CC41018	29	125	CC81002	89	102	CR34042	114	187	CR43033	16	242				CR60203	232	98
CC41021	25	123				CR34043	114	209				CR60206	234	89	CR60208	234	85
CC41022	25	126				CR34046	117	215				CR60214	223	94	CR60220	234	85
CC41029	42	18	CC81004	96	109				CR43036	19	219				CR60223	214	90
			CC87002	129	35				CR43038	22	243						
CC43001	19	199	CC87003	70	99	CR34047	131	221	CR43041	48	224						
CC43003	87	230	CC87004	70	102	CR34052	119	215	CR43042	40	229						
CC43006	17	199	CC87005	102	81	CR34053	121	221	CR43043	141	243				CR61003	179	28
CC43008	84	230				CR34054	126	215				CR61004	198	20	CR61007	179	58
CC43010	157	248	CC87006	80	107	CR34057	135	216	CR43046	141	240				CR61008	166	47
			CC87007	123	38				CR43047	141	238				CR61009	181	63
CC43011	44	203	CC87008	128	41	CR34058	132	215	CR43048	147	233						
CC43013	71	231	CC87009	128	38	CR34059	121	185	CR43049	101	213						
CC43014	154	248	CC87011	112	100	CR34062	120	192	CR43050	99	213				CR61029	166	110
CC43016	42	203				CR34063	132	197				CR61032	170	99	CR61039	207	132
CC43018	76	232	CC87016	98	70	CR34064	122	197	CR43051	92	230				CR61042	228	123
			CC87023	70	96				CR43052	95	230				CR61052	182	81
CC43019	141	235	CC87024	130	92	CR34066	122	192	CR43053	91	244						
CC43021	16	193	CC87026	97	86	CR34067	123	189	CR43054	101	204						
CC43023	27	231				CR34068	123	185	CR43055	99	204				CR61059	171	86
CC43024	160	239	CD21201	303	160	CR34071	130	192				CR61301	248	13	CR61302	242	15
CC43026	10	200	CD21202	297	144	CR34072	133	201	CR43056	98	244				CR61303	231	15
			CD21203	306	160				CR43057	105	244				CR61304	206	23
CC43028	24	231	CD21206	324	171	CR34076	117	187	CR43058	111	244						
CC43031	38	204	CD21225	143	91	CR34078	117	203	CR43059	109	213						
CC43033	16	232				CR34081	132	208	CR43061	108	225				CR61306	210	18
CC43036	38	201	CD32315	72	208	CR34082	122	203	CR43062	111	225				CR61311	221	

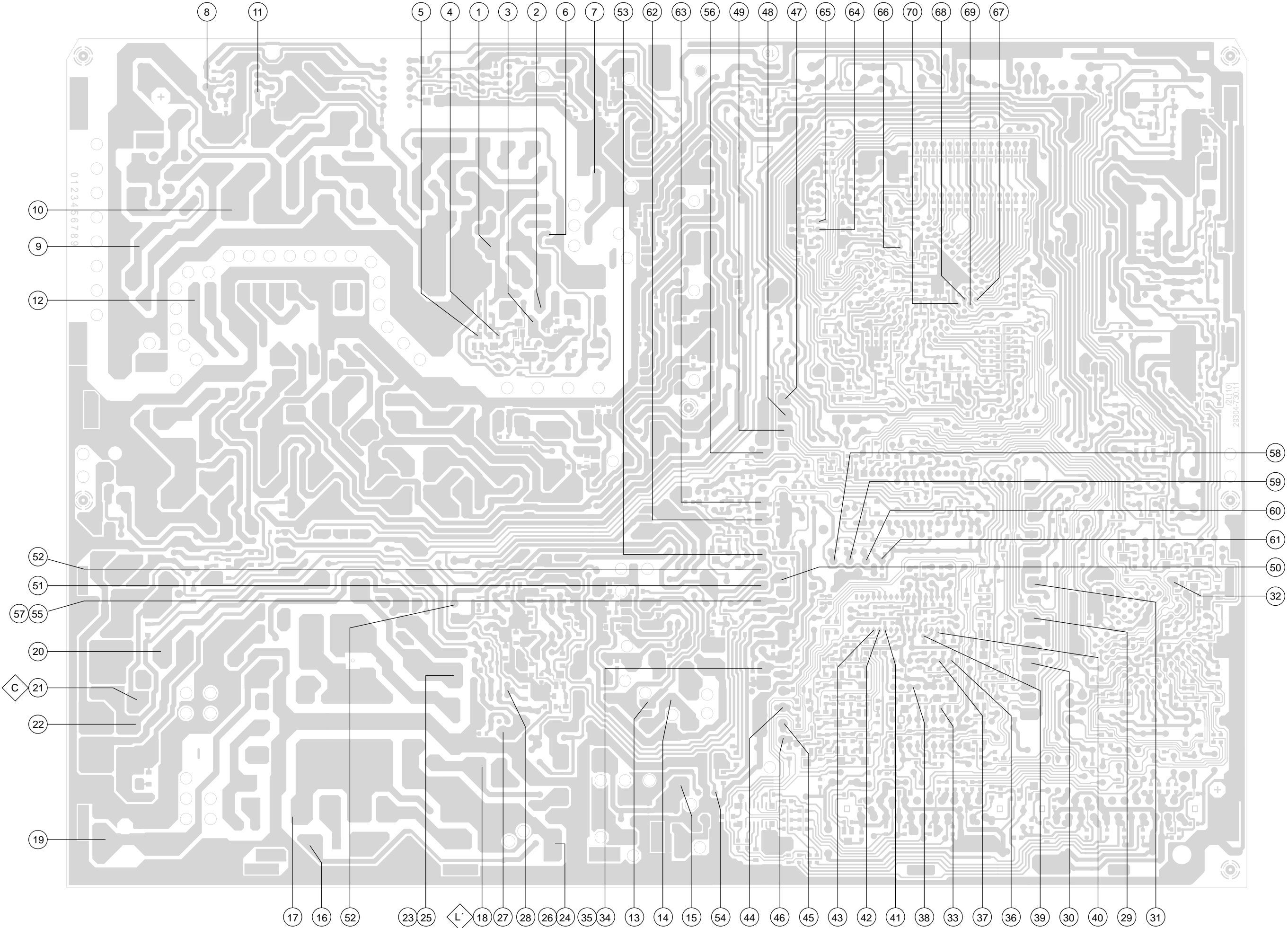


**Lötseite, Ansicht von unten / Solder side, bottom view**



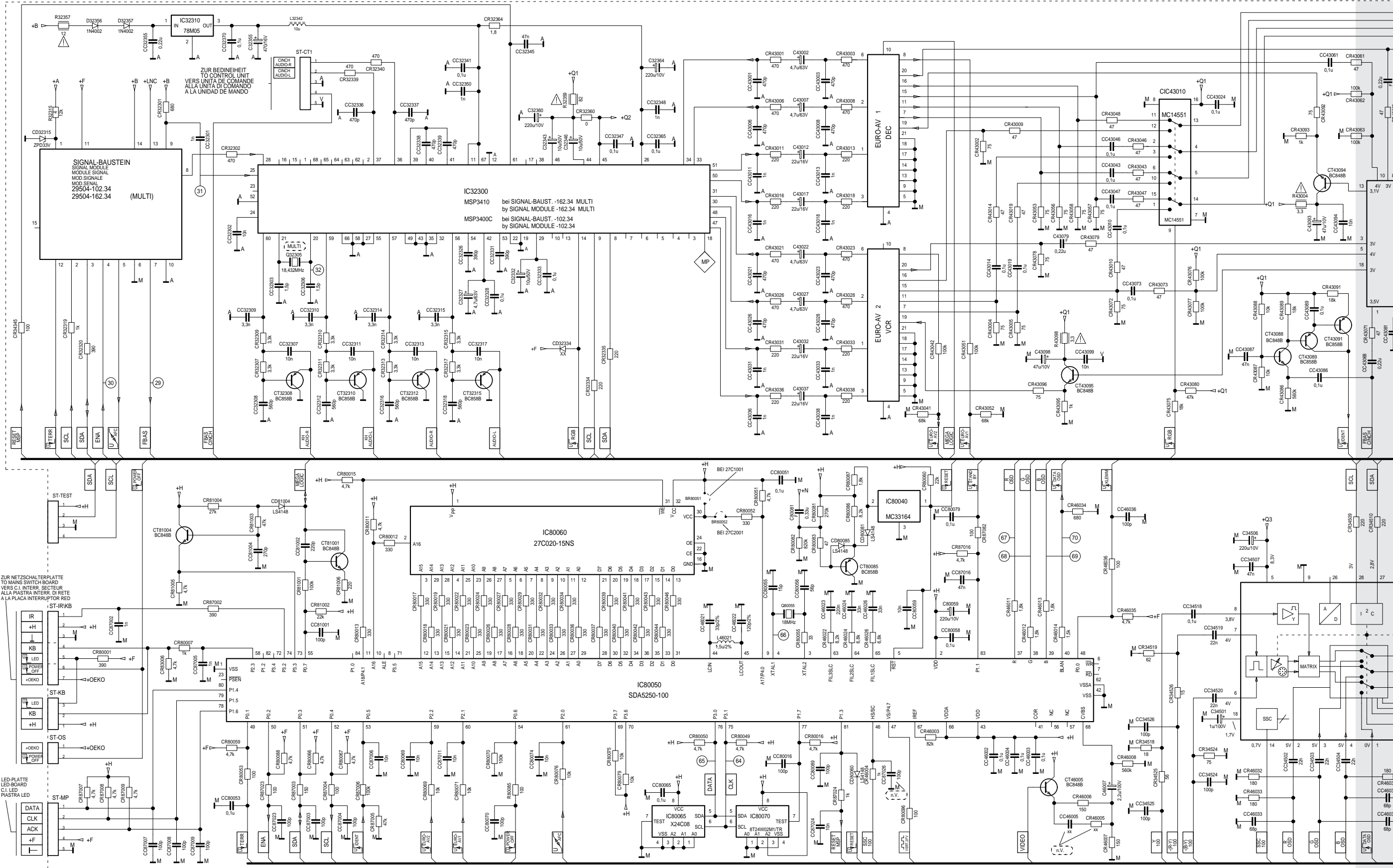
Chassisplatte – Oszillogramm-Meßpunkte / Oscillogram Test Points

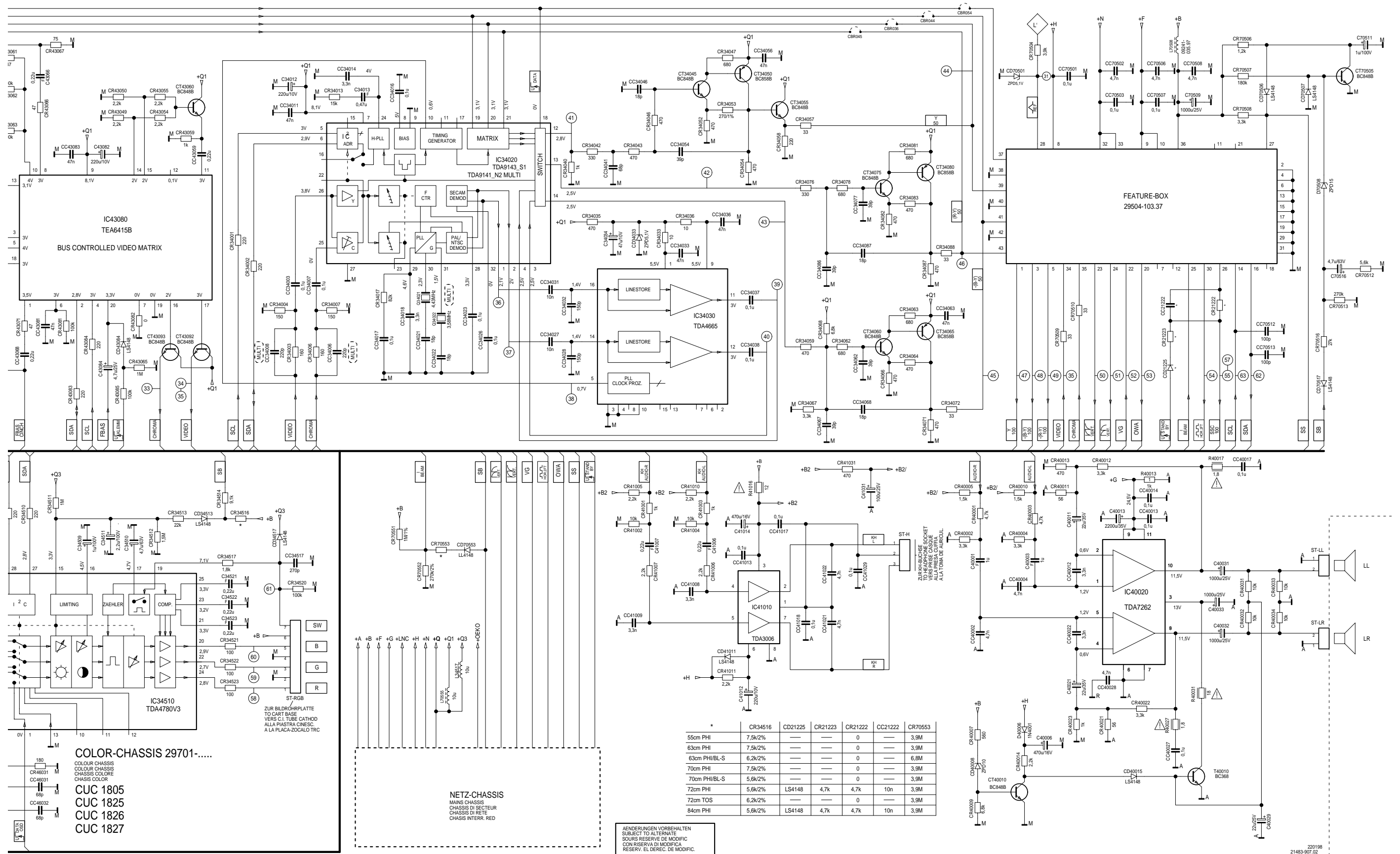
Lötseite, Ansicht von unten / Solder side, bottom view



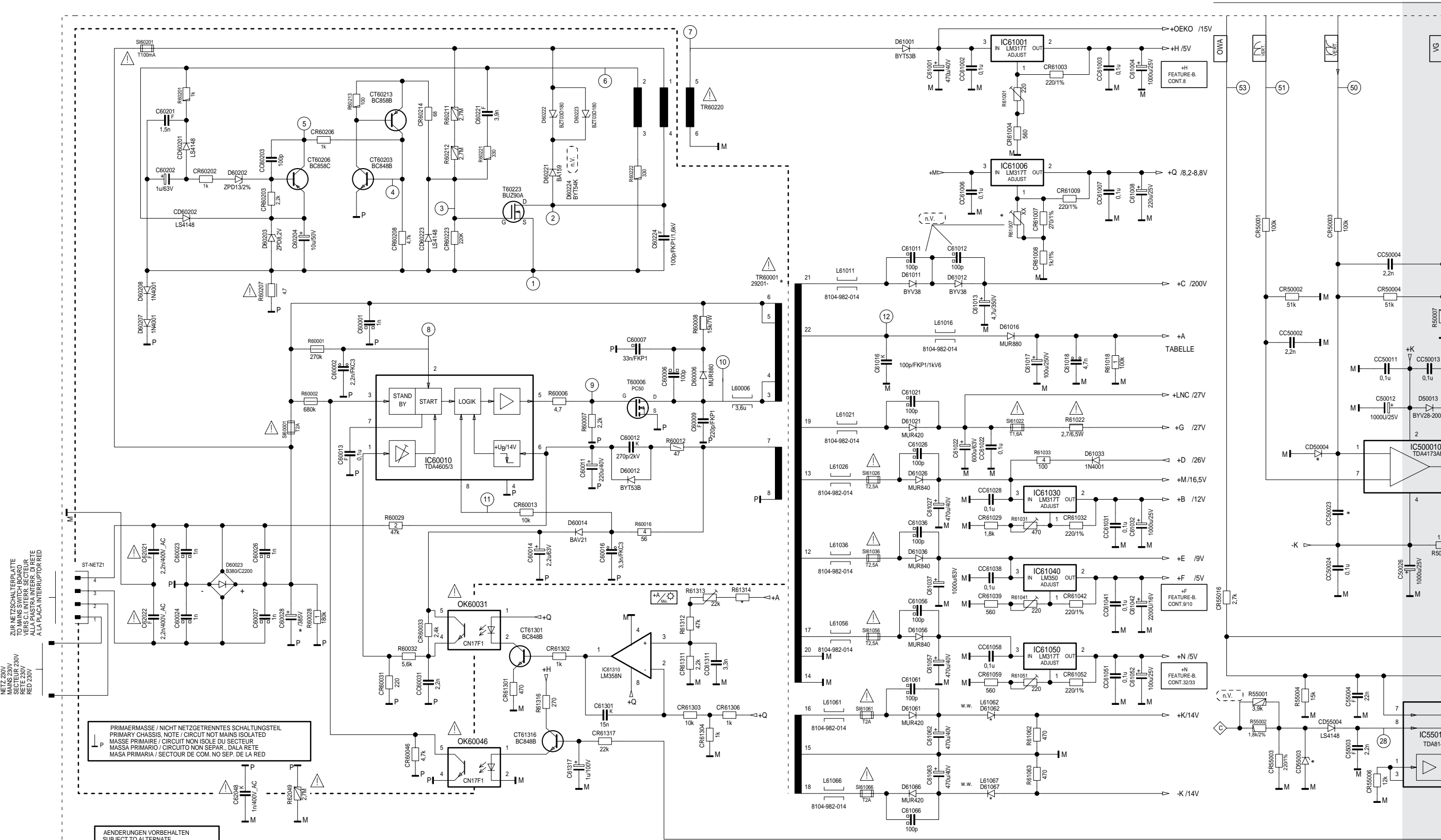


Chassisplatte – Color Chassis / Colour Chassis





Chassisplatte – Netz-Chassis / Mains Chassis



PRIMAERMASSE / NICHT NETZGETRENNTES SCHALTUNGSTEIL  
PRIMARY CHASSIS, NOTE / CIRCUIT NOT MAINS ISOLATED  
MASSE PRIMAIRE / CIRCUIT NON ISOLE DU SECTEUR  
MASSA PRIMARIO / CIRCUITO NON SEPAR. DALA RETE  
MASA PRIMARIA / SECTOUR DE COM. NO SEP. DE LA RED

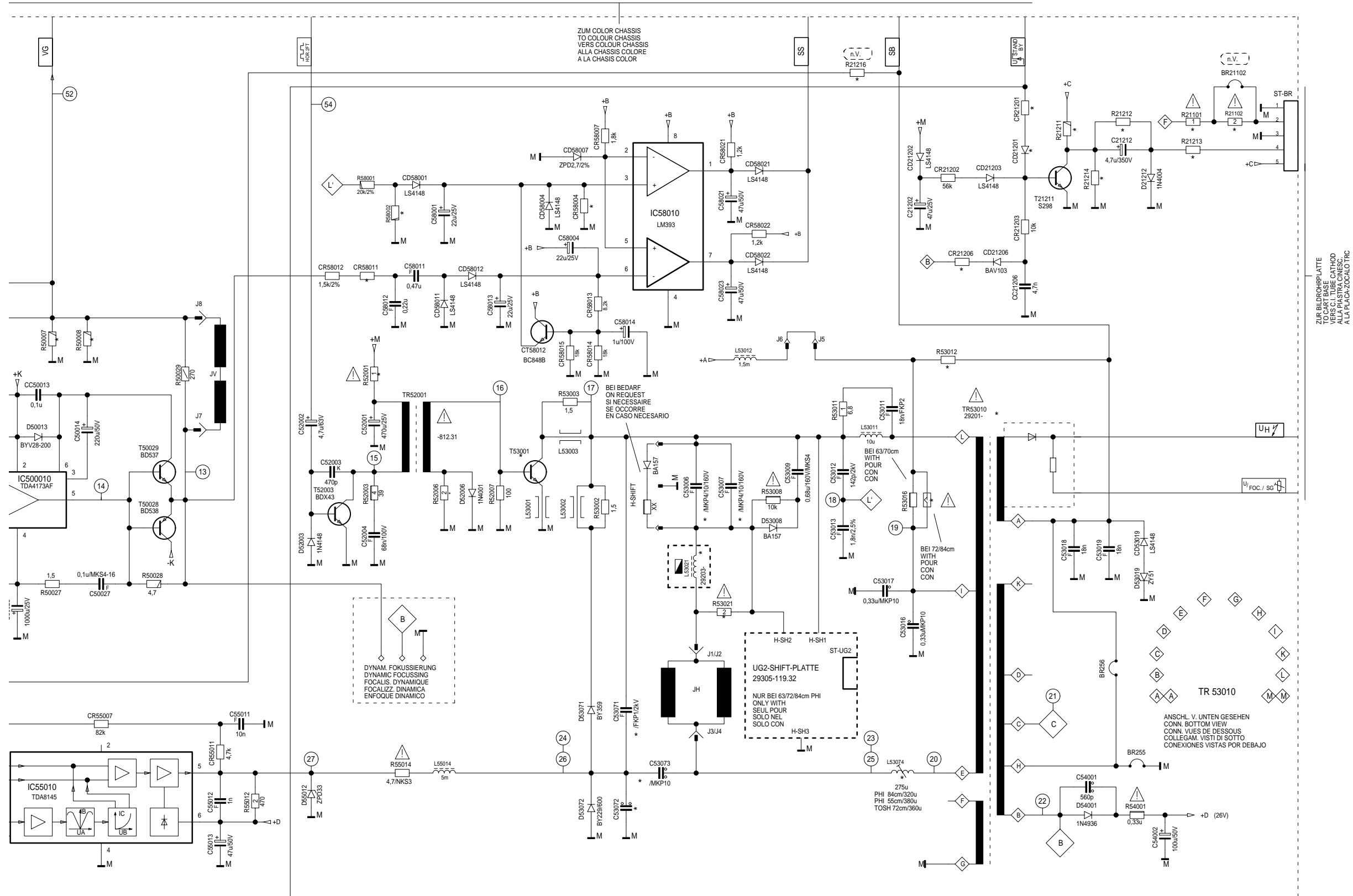
ÄNDERUNGEN VORBEHALTEN  
SUBJECT TO ALTERNATE  
SOURS RESERVE DE MODIFIC  
CON RISERVA DI MODIFICA  
RESERV. EL DEREC. DE MODIFIC.

NETZ-CHASSIS  
MAINS CHASSIS  
CHASSIS DI SECTEUR  
CHASSIS DI RETE  
CHASSIS INTERR. RED

CUC 1805  
CUC 1825  
CUC 1826  
CUC 1827

	* +A	L61062 D61062	L61067 D61067	R21101	R21102 BR21102	CR21201	CD21201	CR21206	R21211	R21212	R21213	R21214	CD50004	R50007	R50008	CC50023	R52006	T53001	C53006	C5300
PHI 55cm	146V	1N4003	1N4003	6,2	—	22k	LS4148	62k	220k	4,7M	10k	820k	—	3	3	1n	3,3	2SC4542	0,25u	0,25
PHI 63cm	135V	1N4003	1N4003	6,2	—	22k	LS4148	47k	100k	1,5M	10k	820k	—	1,6	1,6	—	1,8	2SC4542	0,3u	0,3k
PHI 63cm/BL-S	143V	—	—	5,1	—	22k	LS4148	47k	100k	1,5M	10k	820k	—	1,5	1,5	—	1	2SC4288A	0,3u	0,3k
PHI 70cm	135V	1N4003	1N4003	6,2	—	22k	LS4148	47k	100k	1,5M	10k	820k	—	1,6	1,6	—	1,5	2SC4542	0,41u	0,41
PHI 70cm/BL-S	146V	—	—	6,2	—	22k	LS4148	47k	100k	1,5M	10k	820k	—	1,5	1,5	—	1	2SC4288A	0,41u	0,41
PHI 72cm	140V	—	—	5,6	—	—	—	56k	22k	1,5M	100k	270k	LS4148	1,6	1,6	—	1	2SC4288A	0,41u	0,41
TOS 72cm	148V	—	—	3,3/2W	—	22k	LS4148	47k	100k	1,5M	10k	820k	—	1,3	1,5	—	1	2SC4288A	0,25u	0,25
PHI 84cm	148V	1N4003	1N4003	6,2	—	—	—	47k	22k	1,5M	100k	270k	LS4148	1,6	1,6	—	1	2SC4288A	0,41u	0,3k





06	C53007	TR53010 29201-	BR255	BR256	R53012	R53016	R53021	C53071	C53072	C53073	L53074	R58002	CR58004	CR58011	TR60001 29201-	R52001	L53021	CD55003	R61314	C60028
u	0,25u	-680.02	—	—	—	6,8/11W	390	6,8n	27n	0,47u	859.65	3k/2%	13k/2%	1,5k/2%	-569.97	33/2W	-119	ZPD3,9V/2%	10k	220u
j	0,3u	-033.01	—	—	—	1M/1%	220	9n	20n	0,47u	859.55	3,9k/2%	13k/2%	1,5k/2%	-566.97	4,7/1W	-122	ZPD3,9V/2%	10k	300u
j	0,3u	-680.02	—	—	—	560k/1%	220	11n	27n	0,47u	859.63	3,3k/2%	13k/2%	1,2k/2%	-573.97	8,2/1W	-122	ZPD3,9V/2%	10k	300u
u	0,41u	-033.01	—	—	—	560k/1%	220	10n	20n	0,47u	859.55	3,9k/2%	13k/2%	1,5k/2%	-566.97	4,7/1W	-122	ZPD3,9V/2%	10k	300u
u	0,41u	-680.01	—	—	—	560k/1%	390	13n	27n	0,47u	859.64	3,6k/1%	12k/2%	1,2k/2%	-569.97	4,7/1W	-122	ZPD3,9V/2%	10k	300u
u	0,41u	-680.01	—	—	—	560k/1%	390	13n	27n	0,47u	859.55	3,9k/2%	12k/2%	1,8k/2%	-568.97	4,7/1W	-122	ZPD3,9V/2%	10k	300u
u	0,25u	-680.01	—	—	—	560k/1%	390	13n	27n	0,47u	859.64	3k/2%	13k/2%	3,3k/2%	-568.97	4,7/1W	-122	ZPD4,3V/2%	15k	300u
u	0,3u	-680.02	—	—	—	560k/1%	220	11,5n	27n	0,68u	859.63	3,3k/2%	12k/2%	1,5k/2%	-569.97	4,7/1W	-122	ZPD3,9V/2%	15k	300u

021297  
21483-907.01

Ersatzteilliste  
Spare Parts List

2 / 98

GRUNDIG

TV

ST 70-278 IDTV

SACH-NR. / PART NO.: 9.21752-0175  
BESTELL-NR. / ORDER NO.: G.CH 0675 SCHWARZ/BLACK

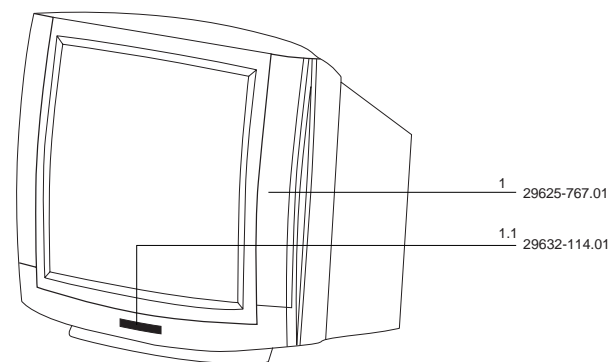
POS. NR. POS. NO.	ABB. FIG.	SACHNUMMER PART NUMBER	ANZ. QTY.	BEZEICHNUNG (D)	DESCRIPTION (GB)
0001.000		92175-201.75		ST 70-278 IDTV SCHWARZ	ST 70-278 IDTV BLACK
0001.100		29625-767.01		GEH-VORDERTEIL OFB	FRONT PART SURFACE TREATE
0001.200		29632-114.01		EMBLEM GRUNDIG	EMBLEM GRUNDIG
0001.300		29633-431.01		INFRA-FENSTER	INFRA WINDOW
0001.400		29501-688.01		TASTE NETZ	KEY POWER
0006.000		29628-417.01		DRUCKFEDER	PRESS SPRING
0007.000		19126-034.97	2	LAUTSPRECHER 70X165MM	LOUDSPEAKER 70X165MM
0008.000		29501-671.06		TASTEN-SATZ	KEY SET
0010.000		29636-032.01		ABDECKUNG BUCHSEN	COVER
		29636-117.80		GEH-RUECKTEIL	REAR PART
		29656-004.02		MONTAGEZUBEHOER F.BILDROHR	MOUNTING ACCESSORIES F.CRT
				KEIN E-TEIL	NO SPARE PART
0021.000		29607-219.01	8	SPULENHAKEN	COIL HOOK
0024.000	△	09246-131.75		SPULE ENTMAGNETISIERUNG	COIL DEGAUSING CPL
0025.000	△	8300-030-436		BILDR.A66EAK71X44/ A66EAK	PICT.TUBE A66EAK71X44/ A6
0026.000	△	29201-360.02		ANODENKAPPE M.HOCHSPANNUNGSKABEL	ANODE CAP W.HIGH VOLTAGE CABLE
0030.000		29501-082.63		BEDIENEINHEIT	CONTROL UNIT
0030.100		29303-168.81		CINCH-BUCHSE 3-FACH GE/WS/RT	CINCH SOCKET 3 FOLD YE/WH/RD
0030.200		29303-390.42		KOPFHOERERBUCHSE 3,5 O.SCHALTER	HEADPHONE SOCKET 3.5 W/O SWITCH
0030.300	△	29703-291.71		NETZSCHALTER ECO O.WISCHER	POWER SWITCH ECO W/O WIPER
0030.500		29703-357.11		TASTSCHALTER PROGRAMM +	KEY SWITCH PROGRAMME +
0030.600		29703-357.11		TASTSCHALTER PROGRAMM -	KEY SWITCH PROGRAMME -
0030.700		29703-357.11		TASTSCHALTER LAUTSTAERKE +	KEY SWITCH VOLUME +
0030.800		29703-357.11		TASTSCHALTER LAUTSTAERKE -	KEY SWITCH VOLUME -
0031.000	△	29700-628.01		ABDECKUNG F.CHASSIS	COVER FOR CHASSIS
0035.000		8290-991-316		NETZKABEL KPL.	POWER CABLE CPL GWN9.22
0036.000		29642-061.01		TELEPILOT TP 800	REMTOTE CONTROL TP 800
		29305-122.04	X	BILDROHRPLATTE 70CM	PICTURE TUBE BOARD 70CM
		21752-941.01		BEDIENUNGSANLEITUNG	OPERATING INSTRUCTIONS
		29701-096.01	X	CHASSIS-FS-DIGI BASIC	CHASSIS TV-DIGI BASIC
				CUC 1825	CUC 1825
				KEIN E-TEIL	NO SPARE PART
		72010-019.30		SERVICE MANUAL D/GB	SERVICE MANUAL D/GB
		72010-019.31		SERVICE MANUAL D/GB 1. ERGAENZUNG	SERVICE MANUAL D/GB 1ST SUPPLEMENT
		72010-019.32		SERVICE MANAUL D/GB 2. ERGAENZUNG	SERVICE MANUAL D/GB 2ND SUPPLEMENT
		72010-019.33		SERVICE MANUAL D/GB 3. ERGAENZUNG	SERVICE MANUAL D/GB 3RD SUPPLEMENT
		72010-019.34		SERVICE MANUAL D/GB 4. ERGAENZUNG	SERVICE MANUAL D/GB 4TH SUPPLEMENT
		72010-019.35		SERVICE MANUAL D/GB 5. ERGAENZUNG	SERVICE MANUAL D/GB 5TH SUPPLEMENT
		72010-019.36		SERVICE MANUAL D/GB 6. ERGAENZUNG	SERVICE MANUAL D/GB 6TH SUPPLEMENT

X = SIEHE GESONDERTE E-LISTE

X = SEE SEPARATE PARTS LIST

POS. NR. POS. NO.	SACHNUMMER PART NUMBER	BEZEICHNUNG DESCRIPTION
----------------------	---------------------------	----------------------------

	<b>29501-082.63</b>	<b>BEDIENEINHEIT/ CONTROL UNIT</b>
C 62501	△ 8511-793-033	FOKO MP3 0,22UF 20% 250VW
D 805	8309-944-601	LE DIODE TLHR 4601 TFK
D 81501	8309-215-045	DIODE 1N4148
IC 84001	8305-367-530	IC TFMS5300 (STEHEND) TE
L 62501	△ 29500-825.97	ENTSTOER-DR/ INTERFERENCE CHOKE
R 62501	8311-005-017	NTC 4,7 OHM 30% S237/S234
R 62505	△ 8311-200-010	PTC #1 DUO
SI 62501	△ 8315-622-503	SI 5X20 T3,15A H 250V
T 81501	8303-295-875	TRANS.BC 875/877/879 SIE
T 81502	8303-205-548	TRANS BC548B



Es gelten die Vorschriften und Sicherheitshinweise gemäß dem Service Manual "Sicherheit", Sach-Nummer 72010-800.00, sowie zusätzlich die eventuell abweichenden, landesspezifischen Vorschriften!



The regulations and safety instructions shall be valid as provided by the "Safety" Service Manual, part number 72010-800.00, as well as the respective national deviations.

# Ersatzteilliste Spare Parts List

12 / 97

GRUNDIG

TV

ST 63-270/8 IDTV

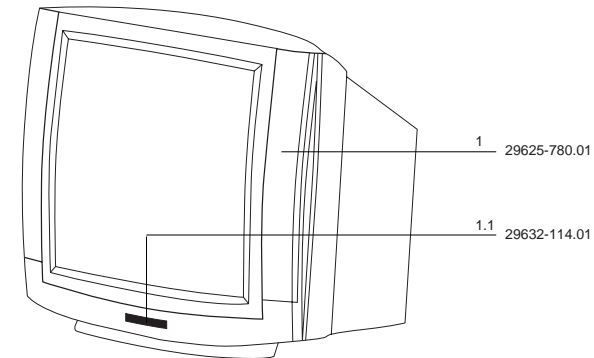
SACH-NR. / PART NO.: 9.21696-0281  
BESTELL-NR. / ORDER NO.: G.CG 1681 COSMOS-SCHWARZ/COSMOS BLACK

POS. NR. POS. NO.	ABB. FIG.	SACHNUMMER PART NUMBER	ANZ. QTY.	BEZEICHNUNG (D)	DESCRIPTION (GB)
0001.000		9.21696-0281		ST 63-270/8 IDTV COSMOS-SCHWARZ	ST 63-270/8 IDTV COSMOS-BLACK
0001.100		29625-780.01		GEH-VORDERTEIL OFB	FRONT PART SURFACE TREATE
0001.200		29632-114.01		EMBLEM GRUNDIG	EMBLEM GRUNDIG
0001.300		29633-431.01		INFRA-FENSTER	INFRA WINDOW
0001.400		29501-688.01		TASTE NETZ	KEY POWER
0006.000		29628-417.01		DRUCKFEDER	PRESS SPRING
0007.000		19126-034.97	2	LAUTSPRECHER 70X165MM	LOUDSPEAKER 70X165MM
0008.000		29501-671.06		TASTEN-SATZ	KEY SET
0010.000		29636-032.01		ABDECKUNG BUCHSEN	COVER
0011.000		29636-175.80		GEH-RUECKTEIL	REAR PANEL
		29618-487.62		TYPENAUFKLEBER	TYPE LABEL
		29656-004.01		MONTAGEZUBEHOER F.BILDROHR KEIN E-TEIL	MOUNTING ACCESSORIES F.CRT NO SPARE PART
0021.000		29607-219.01	8	SPULENHAKEN	COIL HOOK
0024.000	△	09246-130.75		SPULE ENTMAGNETISIERUNG	COIL DEGAUSSING F.PICT.TU
0025.000	△	8300-020-412		BILDR.A59EAK071X44 PHI	PICT.TUBE A59EAK071X44 P
0026.000	△	29201-360.02		ANODENKAPPE M.HOCHSPANNUNGSKABEL	ANODE CAP W.HIGH VOLTAGE CABLE
0030.000		29501-082.63		BEDIENEINHEIT	CONTROL UNIT
0030.100		29303-168.81		CINCH-BUCHSE 3-FACH GE/WS/RT	CINCH SOCKET 3 FOLD YE/WH/RD
0030.200		29303-390.42		KOPFHÖRERBUCHSE 3,5 O.SCHALTER	HEADPHONE SOCKET 3,5 W/O SWITCH
0030.300	△	29703-291.71		NETZSCHALTER ECO O.WISCHER	POWER SWITCH ECO W/O WIPER
0030.400	△	09621-113.02	2	SICHERUNGSHALTER	FUSE HOLDER
0030.500		29703-357.11		TASTSCHALTER PROGRAMM +	KEY SWITCH PROGRAMME +
0030.600		29703-357.11		TASTSCHALTER PROGRAMM -	KEY SWITCH PROGRAMME -
0030.700		29703-357.11		TASTSCHALTER LAUTSTÄRKE +	KEY SWITCH VOLUME +
0030.800		29703-357.11		TASTSCHALTER LAUTSTÄRKE -	KEY SWITCH VOLUME -
0031.000		29700-628.01		ABDECKUNG F. CHASSIS	COVER FOR CHASSIS
0035.000	△	8290-991-316		NETZKABEL KPL	POWER CABLE CPL GWN9.22
0036.000		29642-061.01		TELEPILOT TP 800	REMOTE CONTROL TP 800
		29305-122.04	X	BILDROHRPLATTE 70CM	PICTURE TUBE BOARD 70CM
		21696-941.02		BEDIENUNGSANLEITUNG	OPERATING INSTRUCTIONS
		72010-019.30		SERVICE MANUAL D/GB	SERVICE MANUAL D/GB
		72010-019.31		SERVICE MANUAL D/GB 1. ERGAENZUNG	SERVICE MANUAL D/GB 1ST SUPPLEMENT
		72010-019.32		SERVICE MANAUL D/GB 2. ERGAENZUNG	SERVICE MANUAL D/GB 2ND SUPPLEMENT
		72010-019.33		SERVICE MANUAL D/GB 3. ERGAENZUNG	SERVICE MANUAL D/GB 3RD SUPPLEMENT
		72010-019.34		SERVICE MANUAL D/GB 4. ERGAENZUNG	SERVICE MANUAL D/GB 4TH SUPPLEMENT
		72010-019.35		SERVICE MANUAL D/GB 5. ERGAENZUNG	SERVICE MANUAL D/GB 5TH SUPPLEMENT
		72010-019.36		SERVICE MANUAL D/GB 6. ERGAENZUNG	SERVICE MANUAL D/GB 6TH SUPPLEMENT
		29701-096.04	X	CHASSIS-FS DIGI-BASIC CUC 1825 KEIN E-TEIL	CHASSIS-TV DIGI-BASIC CUC 1825 NO SPARE PART

X = SIEHE GESONDERTE E-LISTE

X = SEE SEPARATE PARTS LIST

POS. NR. POS. NO.	SACHNUMMER PART NUMBER	BEZEICHNUNG DESCRIPTION
	29501-082.63	BEDIENEINHEIT/ CONTROL UNIT
C62501 △	8511-793-033	FOKO MP3 0,22UF 20% 250VW
D 805	8309-944-601	LE DIODE TLHR 4601 TFK
D 81501	8309-215-045	DIODE 1N4148
IC 84001	8305-367-530	IC TFMS5300 (STEHEND) TE
L62501 △	29500-825.97	ENTSTOER-DR/ INTERFERENCE CHOKE
R 62501	8311-005-017	NTC 4,7 OHM 30% S237/S234
R62505 △	8311-200-010	PTC #1 DUO
SI62501 △	8315-622-503	SI 5X20 T3,15A H 250V
T 81501	8303-295-875	TRANS.BC 875/877/879 SIE
T 81502	8303-205-548	TRANS BC548B



Btx \*32700#

ÄNDERUNGEN VORBEHALTEN / SUBJECT TO ALTERATION

Es gelten die Vorschriften und Sicherheitshinweise gemäß dem Service Manual "Sicherheit", Sach-Nummer 72010-800.00, sowie zusätzlich die eventuell abweichenden, landesspezifischen Vorschriften!

Btx \*32700#



The regulations and safety instructions shall be valid as provided by the "Safety" Service Manual, part number 72010-800.00, as well as the respective national deviations.

ÄNDERUNGEN VORBEHALTEN / SUBJECT TO ALTERATION



Ersatzteilliste  
Spare Parts List

TV

3 / 98

## M 72-270/8 IDTV/LOG ELEGANCE

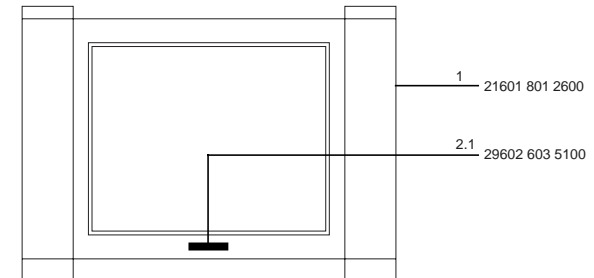
SACH-NR. / PART NO.: 92160 102 2600  
BESTELL-NR. / ORDER NO.: G.CH3626 SCHWARZ/BLACK

POS. NR. POS. NO.	ABB. FIG.	SACHNUMMER PART NUMBER	ANZ. QTY.	BEZEICHNUNG (D)	DESCRIPTION (GB)
		92160 102 2600		M 72-270/8 IDTV/LOG ELEGANCE SCHWARZ	M 72-270/8 IDTV/LOG/ELEGANCE BLACK
0001.000		21601 801 2600		GEHÄUSE MONT.KPL.	HOUSING MONT.CPL.
0002.000		29633 676 0100		BLLENDE KPL.	PANEL ASSY
0002.100		29602 603 5100		GRUNDIG EMBLEM	GRUNDIG EMBLEM
0003.000		29633 668 0100		KLAPPE DRUCK KPL.	FLAP CPL.
0004.000		29700 628 0100		ABDECKUNG	COVER
0005.000		19136 008 9700	2	LAUTSPRECHER	LOUDSPEAKER
0006.000		19115 008 9700	2	HOCHTONFOLIENKALOTTE	TWEETER, SPHERICAL FOIL CAP
0010.000		29636 067 0100		GEH-RUECKTEIL KPL.	CABINET REAR PART
0011.000		29618 643 0400		TYPENAUFKLEBER	TYPE LABEL SELF-ADHESIVE
		29656 004 1000		MONTAGEZUBEHOER F.BILDROHR KEIN E-TEIL	MOUNTING ACCESSORIES FOR CRT NO SPARE PART
0021.000		29607 307 0100	2	SCHLAUFE	LOOP
0022.000		09246 134 7600		SPULE ENTMAGNETISIERUNG	COIL DEGAUSING
0025.000		83000 682 0300		BILDR.A68ESF202X43/ A68ES	PICT.TUBE A68ESF202X43/ A
0026.000		29201 360 1100		ANODENKAPPE M.HOCHSPANNUNGSKABEL	ANODE CAP W.HIGH VOLTAGE CABLE
0029.000		29305 165 6500		NETZSCHALTERPLATTE	POWER SWITCH BOARD
0029.100		29703 291 7100		NETZSCHALTER ECO O.WISCHER	POWER SWITCH ECO W/O WIPER
0029.200		29303 168 0500		CINCH-BUCHSE 3-FACH GE/WS/RT	CINCH SOCKET 3 FOLD YE/WH/RD
0029.300		29303 390 4200		KOPFHÖRERBUCHSE 3,5 O.SCHALTER	HEADPHONE SOCKET 3,5 W/O SWITCH
0029.400		09621 113 0200	2	SICHERUNGSHALTER	FUSE HOLDER
0029.500		29703 357 0100		TASTSCHALTER PROGRAMM +	KEY SWITCH PROGRAMME +
0029.600		29703 357 0100		TASTSCHALTER PROGRAMM -	KEY SWITCH PROGRAMME -
0029.700		29703 357 0100		TASTSCHALTER LAUTSTÄRKE +	KEY SWITCH VOLUME +
0029.800		29703 357 0100		TASTSCHALTER LAUTSTÄRKE -	KEY SWITCH VOLUME -
0030.000		29633 674 0100		TASTENKNOPF NETZ	KEY BUTTON MAINS SUPPLY
0031.000		29501 629 0100		TASTENSATZ	KEYS SET
0032.000		29305 150 0400		NETZENTSTÖREINHEIT	MAINS INTERFERENCE UNIT
		29501 081 8500		KEYBOARDPLATTE KEIN E-TEIL	KEYBOARD PCB NO SPARE PART
0035.000		82909 913 1600		NETZKABEL KPL.	POWER CABLE CPL GWN9.22
0036.000		29642 061 0100		TELEPILOT TP 800	REMOTE CONTROL TP 800
		29305 122 1000	X	BILDROHRPLATTE 72CM	PICTURE TUBE BOARD 72CM
		21601 941 0200		BEDIENUNGSANLEITUNG	OPERATING INSTRUCTIONS
		72010 019 3000		SERVICE MANUAL D/GB	SERVICE MANUAL D/GB
		72010 019 3100		SERVICE MANUAL D/GB 1. ERGÄNZUNG	SERVICE MANUAL D/GB 1ST SUPPLEMENT
		72010 019 3200		SERVICE MANUAL D/GB 2. ERGÄNZUNG	SERVICE MANUAL D/GB 2ND SUPPLEMENT
		72010 019 3300		SERVICE MANUAL D/GB 3. ERGÄNZUNG	SERVICE MANUAL D/GB 3RD SUPPLEMENT
		72010 019 3400		SERVICE MANUAL D/GB 4. ERGÄNZUNG	SERVICE MANUAL D/GB 4TH SUPPLEMENT
		72010 019 3500		SERVICE MANUAL D/GB 5. ERGÄNZUNG	SERVICE MANUAL D/GB 5TH SUPPLEMENT
		72010 019 3600		SERVICE MANUAL D/GB 6. ERGÄNZUNG	SERVICE MANUAL D/GB 6TH SUPPLEMENT
		29701 096 1200	X	CHASSIS-FS DIGI-BASIC CUC 1826 KEIN E-TEIL	CHASSIS-TV-DIGI-BASIC CUC 1826 NO SPARE PART

X = SIEHE GESONDERTE E-LISTE

X = SEE SEPARATE PARTS LIST

POS. NR. POS. NO.	SACHNUMMER PART NUMBER	BEZEICHNUNG DESCRIPTION
	29305 165 6500	NETZSCHALTERPLATTE POWER SWITCH BOARD
C 6001	85117 930 4700	FOKO MP3 0,47UF20%250VW W
C 6002	85117 930 4500	FOKO MP3 0,33UF 20% 250VW
D 81501	83092 150 4500	DIODE 1N4148
IC 84001	83053 675 3000	IC TFMS5300 STEHEND/ TSOP
L 6001	△ 29500 832 9700	FUNKENTSTÖERDROSSEL/ INTERFERENCE SUPPR.COIL
R 6003	83110 050 1700	NTC 4,7 OHM 30% S237/S234
R 6009	83112 000 1200	PTC #3 DUO
SI 6001	△ 83156 225 0300	SI 5X20 T3,15A H 250V
T 81501	83032 958 7500	TRANS.BC 875/877/879 SIE
T 81502	83032 055 4800	TRANS BC548B



Es gelten die Vorschriften und Sicherheitshinweise gemäß dem Service Manual "Sicherheit", Sach-Nummer 72010-800.00, sowie zusätzlich die eventuell abweichenden, landesspezifischen Vorschriften!



The regulations and safety instructions shall be valid as provided by the "Safety" Service Manual, part number 72010-800.00, as well as the respective national deviations.

Btx \*32700#

ÄNDERUNGEN VORBEHALTEN / SUBJECT TO ALTERATION

Btx \*32700#

ÄNDERUNGEN VORBEHALTEN / SUBJECT TO ALTERATION

# Ersatzteilliste Spare Parts List

## 12 / 97

 ERSETZT AUSGABE 04/96  
 SUBSTITUTE EDITION 04/96

SACH-NR. / PART NO.: 29701-096.01/04

POS. NR. POS. NO.	ABB. FIG.	SACHNUMMER PART NUMBER	ANZ. QTY.	BEZEICHNUNG (D)	DESCRIPTION (GB)
0001.000		29504-162.34	X	BAUSTEIN SIGNAL / ZF+TUNER	MODULE SIGNAL / ZF+TUNER
0002.000	△	29504-103.37	X	FEATURE-BOX	FEATURE BOX (DIGI)
0003.000		29303-399.54		NETZ EINBAUGERAETESTECKER	APPLIANCE COUPLER W.CABLE
0005.000		29700-632.01		HALTER BAUSTEIN	HOLDER MODULE
0006.000		29303-119.66		EURO-AV BUCHSENLEISTE 21-P SCHWARZ	EURO-AV SOCKET STRIP 21 P BLACK
0007.000		29303-119.68		EURO-AV BUCHSENLEISTE 21-P ORANGE	EURO-AV SOCKET STRIP 21 P ORANGE
0011.000		29303-153.01		MONTAGECLIP D60006/T53001	MOUNTING CLIP D60006/T53001
0012.000		29303-153.12		MONTAGECLIP T60006/IC61030/61040/ D61036/61026/61056/61016/IC61001/61006/ 61050/T50028/IC50010/T50029/52003/ D53072/53071/T53001	MOUNTING CLIP T60006/IC61030/61040/ D61036/61026/61056/61016/IC61001/61006/ 61050/T50028/IC50010/T50029/52003/ D53072/53071/T53001
0013.000		29303-156.18		FOLIE WAERMELEITEND D60006	FOIL HEAT CONDUCTING D60006
0014.000		29303-156.20		FOLIE WAERMELEITEND T60006/IC61030/ 61040/D61036/61026/61056/61016/IC61001/ 61006/61050/T50028/IC50010/T50029/52003	FOIL HEAT CONDUCTING T60006/IC61030/ 61040/D61036/61026/61056/61016/IC61001/ 61006/61050/T50028/IC50010/T50029/52003
0015.000		29303-156.21		FOLIE WAERMELEITEND D53071/53072/53073	FOIL HEAT CONDUCTING D53071/53072/53073
0016.000		29303-153.16		MONTAGECLIP T50029	MOUNTING CLIP T50029

X = SIEHE GESONDERTE E-LISTE

X = SEE SEPARATE PARTS LIST

POS. NR. POS. NO.	SACHNUMMER PART NUMBER	BEZEICHNUNG DESCRIPTION	POS. NR. POS. NO.	SACHNUMMER PART NUMBER	BEZEICHNUNG DESCRIPTION
C 40013	8452-996-190	ELKO 2200UF 20% 35V	C 61066	8650-067-046	HV-KERKO 100PF 20% 1KV
C 40031	8452-996-147	ELKO 1000UF 20% 25V	C 62021	△ 8660-098-238	SI-KERKO B-SS 2200PF 20%
C 40032	8452-996-147	ELKO 1000UF 20% 25V	C 62022	△ 8660-098-238	SI-KERKO B-SS 2200PF 20%
C 40033	8452-996-147	ELKO 1000UF 20% 25V	C 62048	△ 8660-098-234	SI-KERKO B-SS 1000PF 20%
C 50012	8452-996-147	ELKO 1000UF 20% 25V	C 70509	8452-996-147	ELKO 1000UF 20% 25V
C 50026	8452-996-147	ELKO 1000UF 20% 25V			
C 53012	8515-911-602	FKP1 142PF 2.5% 2000V	CD 21201	8325-004-148	SMD DIODE LS 4148
C 53071	8515-911-690	FKP1 9000PF 3.5% 2000V	CD 21202	8325-004-148	SMD DIODE LS 4148
C 60001	8650-081-125	HV-KERKO 1000PF 20% 1KV	CD 21203	8325-004-148	SMD DIODE LS 4148
C 60006	8650-067-046	HV-KERKO 100PF 20% 1KV	CD 21206	8325-313-103	MELF DIODE BAV103
C 60009	8515-911-040	FKP1 220PF 10% 1600V	CD 32315	8309-455-331	MELF Z-DIODE 33B 0,5W
C 60012	8650-081-111	HV-KERKO 270PF 20% 2KV	CD 34033	8309-455-052	MELF-Z DIODE 5,1 B 0,5W
C 60023	8650-081-125	HV-KERKO 1000PF 20% 1KV	CD 34513	8325-004-148	SMD DIODE LS 4148
C 60024	8650-081-125	HV-KERKO 1000PF 20% 1KV	CD 34517	8325-004-148	SMD DIODE LS 4148
C 60026	8650-081-125	HV-KERKO 1000PF 20% 1KV	CD 40008	8309-455-101	MELF-Z DIODE 10 B 0,5W
C 60027	8650-081-125	HV-KERKO 1000PF 20% 1KV	CD 40015	8325-004-148	SMD DIODE LS 4148
C 60224	8515-911-038	FKP1 100PF 10% 1600V	CD 41011	8325-004-148	SMD DIODE LS 4148
C 61004	8452-996-147	ELKO 1000UF 20% 25V	CD 43084	8325-004-148	SMD DIODE LS 4148
C 61016	8515-911-038	FKP1 100PF 10% 1600V	CD 53019	8325-004-148	SMD DIODE LS 4148
C 61021	8650-067-046	HV-KERKO 100PF 20% 1KV	CD 55003	8309-455-040	MELF-Z DIODE 3,9 B 0,5W
C 61026	8650-067-046	HV-KERKO 100PF 20% 1KV	CD 55004	8325-004-148	SMD DIODE LS 4148
C 61032	8452-996-147	ELKO 1000UF 20% 25V	CD 58001	8325-004-148	SMD DIODE LS 4148
C 61036	8650-067-046	HV-KERKO 100PF 20% 1KV	CD 58004	8325-004-148	SMD DIODE LS 4148
C 61037	8452-097-057	ELKO 28 1000UF 63V	CD 58007	8309-455-028	MELF Z-DIODE 2,7 B 0,5W
C 61042	8452-996-107	ELKO 2200UF 20% 16V	CD 58011	8325-004-148	SMD DIODE LS 4148
C 61056	8650-067-046	HV-KERKO 100PF 20% 1KV	CD 58012	8325-004-148	SMD DIODE LS 4148
C 61061	8650-067-046	HV-KERKO 100PF 20% 1KV	CD 58021	8325-004-148	SMD DIODE LS 4148

Btx \*32700#

ÄNDERUNGEN VORBEHALTEN / SUBJECT TO ALTERATION

# GRUNDIG

# TV

## CUC 1825

POS. NR. POS. NO.	SACHNUMMER PART NUMBER	BEZEICHNUNG DESCRIPTION	POS. NR. POS. NO.	SACHNUMMER PART NUMBER	BEZEICHNUNG DESCRIPTION
CD 58022	8325-004-148	SMD DIODE LS 4148	D 60208	8309-215-020	DIODE 1 N 4004 -GA
CD 60201	8325-004-148	SMD DIODE LS 4148	D 60221	8309-201-159	DIODE BA159
CD 60202	8325-004-148	SMD DIODE LS 4148	D 60222	8309-663-180	Z-DIODE BZT03D180
CD 60223	8325-004-148	SMD DIODE LS 4148	D 60223	8309-663-180	Z-DIODE BZT03D180
CD 70501	8309-455-052	MELF-Z DIODE 5,1 B 0,5W	D 61001	8309-516-754	DIODE BYT53B TFK/ EGP10B
CD 70506	8325-004-148	SMD DIODE LS 4148	D 61011	8309-516-038	DIODE BYV38 TFK
CD 70507	8325-004-148	SMD DIODE LS 4148	D 61012	8309-516-038	DIODE BYV38 TFK
CD 70517	8325-004-148	SMD DIODE LS 4148	D 61016	8309-820-880	DIODE MUR 880
CD 70553	8325-004-148	SMD DIODE LS 4148	D 61021	△ 8309-517-172	DIODE BYW 172 D/SK 3 G F0
CD 80060	8325-004-148	SMD DIODE LS 4148	D 61026	8309-820-840	DIODE MUR 840/BYV 29-400/
CD 80081	8325-004-148	SMD DIODE LS 4148	D 61033	8309-215-020	DIODE 1 N 4004 -GA
CD 81004	8325-004-148	SMD DIODE LS 4148	D 61036	8309-820-840	DIODE MUR 840/BYV 29-400/
			D 61056	8309-820-840	DIODE MUR 840/BYV 29-400/
CIC 32300	8305-795-410	SMD IC MSP3410B-PS PLCC	D 61061	△ 8309-517-172	DIODE BYW 172 D/SK 3 G F0
CIC 43010	8305-814-551	SMD IC MC14551BD/R2 MOT	D 61062	8309-215-020	DIODE 1 N 4004 -GA
CIC 80050	8305-158-550	SMD IC SDA5250D12	D 61066	△ 8309-517-172	DIODE BYW 172 D/SK 3 G F0
			D 61067	8309-215-020	DIODE 1 N 4004 -GA
CT 32308	8301-003-858	SMD-TRANS.BC 858 B	D 70508	8309-720-116	Z-DIODE 15 C 0,5W
CT 32310	8301-003-858	SMD-TRANS.BC 858 B			
CT 32312	8301-003-858	SMD-TRANS.BC 858 B	IC 32310	8305-205-700	IC 78M05 2%
CT 32315	8301-003-858	SMD-TRANS.BC 858 B	IC 34020	8305-339-142	IC TDA9143N2/U1
CT 34045	8301-004-848	SMD-TRANS.BC 848 B	IC 34030	8305-334-665	IC TDA4665V4/ U3665M-M
CT 34050	8301-003-858	SMD-TRANS.BC 858 B	IC 34510	8305-334-780	IC TDA4780V3
CT 34055	8301-004-848	SMD-TRANS.BC 848 B	IC 41010	8305-333-006	IC TDA3006 SMI
CT 34060	8301-004-848	SMD-TRANS.BC 848 B	IC 43080	8305-366-415	IC TEA6415B/ TEA6415C
CT 34065	8301-003-858	SMD-TRANS.BC 858 B	IC 50010	8305-344-173	IC TDA4173AF
CT 34075	8301-004-848	SMD-TRANS.BC 848 B	IC 55010	8305-338-145	IC TDA8145
CT 34080	8301-003-858	SMD-TRANS.BC 858 B	IC 58010	8305-204-393	IC LM393P TID/ 393N RAY/
CT 40010	8301-004-848	SMD-TRANS.BC 848 B	IC 60010	8305-354-605	IC TDA4605/3
CT 43060	8301-004-848	SMD-TRANS.BC 848 B	IC 61001	8305-204-317	IC LM317T NSC/MOT/SGS
CT 43088	8301-004-848	SMD-TRANS.BC 848 B	IC 61006	8305-204-317	IC LM317T NSC/MOT/SGS
CT 43089	8301-003-858	SMD-TRANS.BC 858 B	IC 61030	8305-204-317	IC LM317T NSC/MOT/SGS
CT 43091	8301-003-858	SMD-TRANS.BC 858 B	IC 61040	8305-204-350	IC LM350T
CT 43092	8301-004-848	SMD-TRANS.BC 848 B	IC 61050	8305-204-317	IC LM317T NSC/MOT/SGS
CT 43093	8301-004-848	SMD-TRANS.BC 848 B	IC 61310	8305-204-357	IC LM358N NSC/TID/MOT/RA
CT 43094	8301-004-848	SMD-TRANS.BC 848 B	IC 80040	8305-210-064	IC MC33164P-5RP
CT 43095	8301-004-848	SMD-TRANS.BC 848 B	IC 80060	19798-300.22	IC 27C020-150NS PROG.KPL
CT 46005	8301-004-848	SMD-TRANS.BC 848 B	IC 80065	8305-602-008	IC 24C08
CT 58012	8301-004-848	SMD-TRANS.BC 848 B	IC 80070	8305-602-410	IC X24C02P XICOR/ ST24W0
CT 60203	8301-004-848	SMD-TRANS.BC 848 B			
CT 60206	8301-006-858	SMD-TRANS.BC 858 C	L 32342	8140-523-249	DR ST 0411-GRP 10UH
CT 60213	8301-003-858	SMD-TRANS.BC 858 B	L 34517	8140-526-361	DR 0411 10UH 5%
CT 61301	8301-004-848	SMD-TRANS.BC 848 B	L 46021	8140-522-903	DR ST 0411 1,5UH 2% SIE
CT 61316	8301-004-848	SMD-TRANS.BC 848 B	L 53001	8104-982-056	FERRITPERLE HF70 BTL 3,5X
CT 70505	8301-004-848	SMD-TRANS.BC 848 B	L 53002	8104-982-056	FERRITPERLE HF70 BTL 3,5X
CT 80085	8301-003-858	SMD-TRANS.BC 858 B	L 53003	8104-982-056	FERRITPERLE HF70 BTL 3,5X/
CT 81001	8301-004-848	SMD-TRANS.BC 848 B			FERRITE BEAD
CT 81004	8301-004-848	SMD-TRANS.BC 848 B			
D 21212	8309-215-020	DIODE 1 N 4004 -GA	L 53012	09240-114.04	DROSSEL 1,5 MH/CHOKE COIL
D 23256	8309-215-020	DIODE 1 N 4004 -GA	L 53011	8140-505-249	DR A AX-GA 10UH
D 23257	8309-215-020	DIODE 1 N 4004 -GA	L 53021	29203-122.97	LINEARITAETSGLEICER (70CM)/
D 40006	△ 8309-215-020	DIODE 1 N 4004 -GA			LINEARITY CONTROL
D 50013	8309-516-283	DIODE BYV 28-200 RA 12,5/	L 53074	09246-859.55	BRUECKENSULE M.KERN/
D 52003	8309-215-045	DIODE 1N4148			BRIDGE COIL
D 52006	8309-215-020	DIODE 1 N 4004 -GA	L 55014	09245-816.01	O/W AUSKOPPELSPULE/
D 53008	8309-201-005	DIODE BA157			E/W DECOUPLING COIL
D 53019	8309-709-003	Z DIODE ZY 51 ITT	L 60006	29701-739.08	DAEMPUNGSPERLE
D 53071	8309-204-359	DIODE BY359 1500 PHI/ 5T	L 61011	8104-982-014	DAEMPUNGSPERLE 4330 030
D 53072	8309-204-230	DIODE BY 229-600	L 61016	8104-982-014	DAEMPUNGSPERLE 4330 030
D 54001	8309-201-005	DIODE BA157	L 61021	8104-982-014	DAEMPUNGSPERLE 4330 030
D 55012	8309-720-333	Z DIODE 33 C 0,5W	L 61026	8104-982-014	DAEMPUNGSPERLE 4330 030
D 60006	8309-820-880	DIODE MUR 880	L 61036	8104-982-014	DAEMPUNGSPERLE 4330 030
D 60012	8309-516-754	DIODE BYT53B TFK/ EGP10B	L 61056	8104-982-014	DAEMPUNGSPERLE 4330 030
D 60014	8309-200-021	DIODE BAV21 ITT/ TFK	L 61061	8104-982-014	DAEMPUNGSPERLE 4330 030
D 60023	8308-560-520	GLR.B 380 C 3700/2200	L 61066	8104-982-014	DAEMPUNGSPERLE 4330 030/
D 60202	8309-720-131	Z DIODE 13 B 0,5W			DAMPING BEAD
D 60203	8309-720-083	Z DIODE 8,2 B 0,5W	L 70508	09241-035.97	STABKERNDROSSEL/
D 60207	8309-215-020	DIODE 1 N 4004 -GA			BAR CORE CHOKE COIL
			L 70555	8140-526-361	DR 0411 10UH 5%
			OK60031	△ 8306-000-012	OPTOKOPPLER CNY17F1/ CNY1

Btx \*32700#

ÄNDERUNGEN VORBEHALTEN / SUBJECT TO ALTERATION

POS. NR. POS. NO.	SACHNUMMER PART NUMBER	BEZEICHNUNG DESCRIPTION
----------------------	---------------------------	----------------------------

OK60046	△ 8306-000-012	OPTOKOPLER CNY17F1/ CNY1
Q 32305	8382-439-185	QUARZ 18,432 MHZ
Q 34021	8382-135-004	QUARZ 4,433619 MHZ
Q 34022	8382-047-003	QUARZ 3,579545 MHZ
Q 80055	8602-331-155	KERRER #155 18MHZ

R 21101	△ 8705-321-020	MOW 0411 6,2 OHM 5% SXS
R 32315	△ 8705-370-099	MOW 0922 12 KOHM 5%
R 32357	△ 8701-121-027	KSW SI B 12 OHM 5%
R 32359	△ 8700-329-047	KSW NB 0207 82 OHM 5%
R 40013	△ 8705-329-073	MOW 0411 1 KOHM 5%
R 40017	△ 8700-329-007	KSW NB 0207 1,8 OHM 5%
R 40027	△ 8700-329-007	KSW NB 0207 1,8 OHM 5%
R 40031	△ 8700-329-031	KSW NB 0207 18 OHM 5%
R 41016	△ 8700-329-027	KSW NB 0207 12 OHM 5%
R 43004	△ 8701-121-013	KSW SI B 3,3 OHM 5%
R 43098	△ 8701-121-013	KSW SI B 3,3 OHM 5%
R 50007	△ 8766-327-206	MSW 0207 1,6 OHM 2% TK100
R 50008	△ 8766-327-206	MSW 0207 1,6 OHM 2% TK100
R 50027	△ 8700-121-205	KSW 0207 1,5 OHM 5%
R 50029	△ 8766-357-059	MSW 0414 270 OHM 5% TK100
R 52001	△ 8705-329-017	MOW 0411 4,7 OHM 5% DRA
R 53002	△ 8700-121-205	KSW 0207 1,5 OHM 5%
R 53003	△ 8700-121-205	KSW 0207 1,5 OHM 5%
R 53008	△ 8700-329-097	KSW NB 0207 10 KOHM 5%
R 53011	△ 8705-227-021	MOW 0411 6,8 OHM 5% DRA
R 53021	△ 8705-369-257	MOW 0617 220 OHM 10%
R 54001	△ 8735-003-033	DRW 0,75W 0,33 OHM 10% BW
R 55012	△ 8705-369-065	MOW 0617 470 OHM 5%
R 55014	△ 8701-230-817	NKS 3 4,7 OHM 5% ROE
R 60016	8705-370-043	MOW 0922 56 OHM 5%
R 60029	8705-369-113	MOW 0617 47 KOHM 5%
R 60207	△ 8700-329-017	KSW NB 0207 4,7 OHM 5%
R 60211	△ 8765-049-155	MSW 0414 2,7 MOHM VDE B
R 60212	△ 8765-049-155	MSW 0414 2,7 MOHM VDE B
R 61001	8790-050-017	ESTR.SK10-A 220 OHM LIN
R 61018	8705-221-321	MOW 0411 100 KOHM 10% SXA
R 61022	△ 8732-296-011	DRW 6,5 2,7 OHM 10% KP296
R 61031	8790-050-025	ESTR.SK10-A 470 OHM LIN
R 61033	8705-370-058	MOW 0922 100 OHM 10%
R 61041	8790-050-017	ESTR.SK10-A 220 OHM LIN
R 61051	8790-050-017	ESTR.SK10-A 220 OHM LIN
R 61313	8790-050-054	ESTR.SK10-A 22 KOHM LIN
R 62049	△ 8766-349-155	MSW SI 0414 2,7 MOHM 5%

SI60001	△ 8315-620-225	LOET-SI-GR 2 A/T
SI60201	△ 8315-607-026	LOET-SI-GR 100 MA/T
SI61022	△ 8315-619-028	LOET-SI-GR 1,6 A/T
SI61026	△ 8315-621-027	SI LOET T2,5A 250V
SI61036	△ 8315-621-027	SI LOET T2,5A 250V
SI61056	△ 8315-621-027	SI LOET T2,5A 250V
SI61061	△ 8315-620-225	LOET-SI-GR 2 A/T
SI61066	△ 8315-620-225	LOET-SI-GR 2 A/T

T 21211	8303-401-299	TRANS.BF299 G ITT/PBF259
T 40010	8303-287-368	TRANS.BC 368
T 50028	8302-210-544	TRANS.BD 538
T 50029	8302-210-543	TRANS.BD 537 SGS
T 52003	8302-218-043	TRANS.BDX 43
T 53001	8302-624-542	TRANS.2SC4542
T 60006	8302-805-050	TRANS.IRF PC 50

TR 52001	09245-812.31	TREIBER-UEBERTRAGER/ DRIVER TRANSFORMER
----------	--------------	--

Es gelten die Vorschriften und Sicherheitshinweise gemäß dem Service Manual "Sicherheit", Sach-Nummer 72010-800.00, sowie zusätzlich die eventuell abweichenden, landesspezifischen Vorschriften!



The regulations and safety instructions shall be valid as provided by the "Safety" Service Manual, part number 72010-800.00, as well as the respective national deviations.

Btx \*32700#

ÄNDERUNGEN VORBEHALTEN / SUBJECT TO ALTERATION

POS. NR. POS. NO.	SACHNUMMER PART NUMBER	BEZEICHNUNG DESCRIPTION
----------------------	---------------------------	----------------------------

TR60001	△ 29201-566.97	TRAFO SPERRWANDLER/ B.O.-TYPE CONVERTER TRANSFORMER
TR60220	△ 29201-701.97	TRAFO STAND-BY/ TRANSFORMER STAND-BY
TR63010	△ 29221-033.01	TRAFO DIODEN-SPLIT DIGI/ DIODE SPLIT TRANSFORMER

## Ersatzteilliste Spare Parts List

4 / 96

POS. NR. POS. NO.	ABB. FIG.	SACHNUMMER PART NUMBER	ANZ. QTY.	BEZEICHNUNG D	DESCRIPTION GB
----------------------	--------------	---------------------------	--------------	------------------	-------------------

0001.000		29504-162.34	X	BAUSTEIN SIGNAL / ZF+TUNER	MODULE SIGNAL / ZF+TUNER
0002.000		29504-103.37		FEATURE-BOX (DIGI)	FEATURE BOX (DIGI)
0003.000		29700-633.01		HALTER KABEL	HOLDER CABLE
0004.000		29700-628.01		ABDECKUNG	COVER
0005.000		29700-632.01		HALTER BAUSTEIN	HOLDER MODULE
0006.000	△	29303-399.54		NETZ EINBAUGERAETESTECKER	MAINS BUILT IN PLUG
0009.000		29303-153.02		MONTAGECLIP IC366	MOUNTING CLIP IC366
0010.000		29303-153.01		MONTAGECLIP D60006/T53001	MOUNTING CLIP D60006/T53001
0011.000		29303-153.12		MONTAGECLIP T60006/IC61030/61040/ 61036/61026/61056/61016/D53071/T53001/ T50029/T50028/IC50010/61001/61006/61050	MOUNTING CLIP T60006/IC61030/61040/ 61036/61026/61056/61016/D53071/T53001/ T50029/T50028/IC50010/61001/61006/61050
0012.000		29303-153.13		MONTAGECLIP D53072	MOUNTING CLIP D53072
0013.000		29303-153.16		MONTAGECLIP T52003	MOUNTING CLIP T52003
0014.000		29303-156.18		FOLIE WAERMELEITEND D60006	HEAT CONDUCTING FOIL D60006
0015.000		29303-156.20		FOLIE WAERMELEITEND T60006/IC61030/ 61040/61036/61026/61056/61016/IC61001/ 61006/61050/50010/T50029/52003/T50028	HEAT CONDUCTING FOIL T60006/IC61030/ 61040/61036/61026/61056/61016/IC61001/ 61006/61050/50010/T50029/52003/T50028
0016.000		29303-156.21		FOLIE WAERMELEITEND D53072/53071	HEAT CONDUCTING FOIL D53072/53071

X = SIEHE GESONDERTE E-LISTE

X = SEE SEPARATE PARTS LIST

POS. NR. POS. NO.	SACHNUMMER PART NUMBER	BEZEICHNUNG DESCRIPTION
----------------------	---------------------------	----------------------------

C 54001	8605-767-111	SSPN 560PF +50-20% 400V
C 60001	8650-081-125	HV-KERKO 1000PF 20% 1KV
C 60012	8650-081-111	HV-KERKO 270PF 20% 2KV
C 60023	8650-081-125	HV-KERKO 1000PF 20% 1KV
C 60024	8650-081-125	HV-KERKO 1000PF 20% 1KV
C 60026	8650-081-125	HV-KERKO 1000PF 20% 1KV
C 60027	8650-081-125	HV-KERKO 1000PF 20% 1KV
C 61018	8625-897-762	SSPN 4700PF +50-20% 400V
C 61021	8650-067-046	HV-KERKO 100PF 20% 1KV
C 61026	8650-067-046	HV-KERKO 100PF 20% 1KV
C 61036	8650-067-046	HV-KERKO 100PF 20% 1KV
C 61056	8650-067-046	HV-KERKO 100PF 20% 1KV
C 61061	8650-067-046	HV-KERKO 100PF 20% 1KV
C 61066	8650-067-046	HV-KERKO 100PF 20% 1KV

CD 21201	8325-004-148	SMD DIODE LS 4148
CD 21202	8325-004-148	SMD DIODE LS 4148
CD 21203	8325-004-148	SMD DIODE LS 4148
CD 21206	8325-313-103	MELF DIODE BAV103
CD 32315	8309-455-330	MELF Z-DIODE 33C 0,5W
CD 34033	8309-455-052	MELF-Z DIODE 5,1 B 0,5W
CD 34513	8325-004-148	SMD DIODE LS 4148
CD 34517	8325-004-148	SMD DIODE LS 4148
CD 40007	8325-004-148	SMD DIODE LS 4148
CD 40008	8309-455-033	MELF-Z DIODE 3,3 C 0,5W
CD 41011	8325-004-148	SMD DIODE LS 4148
CD 43084	8325-004-148	SMD DIODE LS 4148

POS. NR. POS. NO.	SACHNUMMER PART NUMBER	BEZEICHNUNG DESCRIPTION
----------------------	---------------------------	----------------------------

CD 53019	8325-004-148	SMD DIODE LS 4148
CD 55003	8309-455-040	MELF-Z DIODE 3,9 B 0,5W
CD 55004	8325-004-148	SMD DIODE LS 4148
CD 58001	8325-004-148	SMD DIODE LS 4148
CD 58004	8325-004-148	SMD DIODE LS 4148
CD 58007	8309-455-028	MELF Z-DIODE 2,7 B 0,5W
CD 58011	8325-004-148	SMD DIODE LS 4148
CD 58012	8325-004-148	SMD DIODE LS 4148
CD 58021	8325-004-148	SMD DIODE LS 4148
CD 58022	8325-004-148	SMD DIODE LS 4148
CD 60201	8325-004-148	SMD DIODE LS 4148
CD 60202	8325-004-148	SMD DIODE LS 4148
CD 70501	8309-455-052	MELF-Z DIODE 5,1 B 0,5W
CD 70506	8325-004-148	SMD DIODE LS 4148
CD 70507	8325-004-148	SMD DIODE LS 4148
CD 70517	8325-004-148	SMD DIODE LS 4148
CD 70553	8325-004-148	SMD DIODE LS 4148
CD 80081	8325-004-148	SMD DIODE LS 4148
CD 81004	8325-004-148	SMD DIODE LS 4148

CIC 43010	8305-814-551	SMD IC MC14551BD/R2 MOT
-----------	--------------	-------------------------

CT 32308	8301-003-858	SMD-TRANS.BC 858 B
CT 32310	8301-003-858	SMD-TRANS.BC 858 B
CT 32312	8301-003-858	SMD-TRANS.BC 858 B
CT 32315	8301-003-858	SMD-TRANS.BC 858 B
CT 34045	8301-000-848	SMD TRANS BC848

Btx \*32700#

ÄNDERUNGEN VORBEHALTEN / SUBJECT TO ALTERATION

GRUNDIG

TV

CUC 1826

SACH-NR. / PART NO.: 29701-096.12



Ersatzteilliste  
Spare Parts List

10 / 96

## FEATURE-BOX DIGI BASIC

SACH-NR. / PART NO.: 29504-103.37

POS. NR. POS. NO.	SACHNUMMER PART NUMBER	BEZEICHNUNG DESCRIPTION
----------------------	---------------------------	----------------------------

CT 34050	8301-003-858	SMD-TRANS.BC 858 B
CT 34055	8301-000-848	SMD TRANS BC848
CT 34060	8301-000-848	SMD TRANS BC848
CT 34065	8301-003-858	SMD-TRANS.BC 858 B
CT 34075	8301-000-848	SMD TRANS BC848
CT 34080	8301-003-858	SMD-TRANS.BC 858 B
CT 43060	8301-000-848	SMD TRANS BC848
CT 43088	8301-000-848	SMD TRANS BC848
CT 43089	8301-003-858	SMD-TRANS.BC 858 B
CT 43091	8301-002-858	SMD-TRANS.BC 858 A
CT 43092	8301-000-848	SMD TRANS BC848
CT 43093	8301-000-848	SMD TRANS BC848
CT 43094	8301-000-848	SMD TRANS BC848
CT 43095	8301-000-848	SMD TRANS BC848
CT 46005	8301-000-848	SMD TRANS BC848
CT 58012	8301-004-848	SMD-TRANS.BC 848 B
CT 60203	8301-004-848	SMD-TRANS.BC 848 B
CT 60206	8301-006-858	SMD-TRANS.BC 858 C
CT 60213	8301-003-858	SMD-TRANS.BC 858 B
CT 61301	8301-004-848	SMD-TRANS.BC 848 B
CT 61316	8301-004-848	SMD-TRANS.BC 848 B
CT 70505	8301-004-848	SMD-TRANS.BC 848 B
CT 80085	8301-003-858	SMD-TRANS.BC 858 B
CT 81001	8301-000-848	SMD TRANS BC848
CT 81004	8301-004-848	SMD-TRANS.BC 848 B

D 21212	8309-215-006	DIODE 1 N 4001 -GA
D 40009	8309-215-045	DIODE 1N4148
D 52003	8309-215-045	DIODE 1N4148
D 52006	8309-215-006	DIODE 1 N 4001 -GA
D 53008	8309-201-005	DIODE BA157
D 53019	8309-709-003	Z DIODE ZY 51 ITT
D 54001	8309-215-466	DIODE 1 N 4936
D 55012	8309-720-333	Z DIODE 33 C 0,5W
D 60012	8309-516-754	DIODE BYT53B TFK/ EGP10B
D 60014	8309-200-021	DIODE BAV21 ITT/ TFK
D 60203	8309-720-092	Z DIODE 9,1 B 0,5W
D 60221	8309-201-159	DIODE BA159
D 60222	8309-663-180	Z-DIODE BZT03D180
D 61001	8309-516-754	DIODE BYT53B TFK/ EGP10B
D 61011	8309-516-038	DIODE BYV38 TFK
D 61012	8309-516-038	DIODE BYV38 TFK
D 61016	8309-820-880	DIODE MUR 880
D 61026	8309-820-840	DIODE MUR 840/BYV 29-400/
D 61033	8309-215-006	DIODE 1 N 4001 -GA
D 61036	8309-820-840	DIODE MUR 840/BYV 29-400/
D 61056	8309-820-840	DIODE MUR 840/BYV 29-400/
D 61062	8309-215-010	DIODE 1 N 4003 -GA
D 61067	8309-215-010	DIODE 1 N 4003 -GA
D 70508	8309-720-116	Z DIODE 15 C 0,5W
D 81000	8309-720-056	Z DIODE 5,6 C 0,5W

IC 40020	8305-337-261	IC TDA7262 SGS
IC 61030	8305-204-317	IC LM 317 T NSC/MOT/
IC 61040	8305-204-350	IC LM 350 T
IC 80040	8305-210-064	IC MC 33164 P-5RP
IC 80060	19798-300.01	IC 27C020-15NS PROG.KPL

L 32342	8140-522-249	DR ST 0411 10UH
L 34517	8140-526-534	DR AX 0411-GA 10UH
L 46004	8104-982-014	DAEMPfungSPERLE/ DAMPING BEAD

L 53001	8104-982-056	FERRITPERLE HF 70 BTL
L 53002	8104-982-056	FERRITPERLE HF 70 BTL
L 53003	8104-982-056	FERRITPERLE HF 70 BTL/ FERRITE BEAD

POS. NR. POS. NO.	SACHNUMMER PART NUMBER	BEZEICHNUNG DESCRIPTION
----------------------	---------------------------	----------------------------

L 53011	8140-505-249	DR A AX-GA 10UH
L 61011	8104-982-014	DAEMPfungSPERLE
L 61016	8104-982-014	DAEMPfungSPERLE
L 61021	8104-982-014	DAEMPfungSPERLE
L 61026	8104-982-014	DAEMPfungSPERLE
L 61036	8104-982-014	DAEMPfungSPERLE
L 61056	8104-982-014	DAEMPfungSPERLE
L 61061	8104-982-014	DAEMPfungSPERLE
L 61066	8104-982-014	DAEMPfungSPERLE/ DAMPING BEAD
L 70555	8140-526-534	DR AX 0411-GA 10UH

R 53011	8705-227-021	MOW 0411 6,8 OHM 5% DRA
R 61018	8705-221-321	MOW 0411 100 KOHM 10% SXA

SI 60001	△ 8315-620-225	LOET-SI.-GR 2 A/T
SI 60201	△ 8315-607-026	LOET-SI.-GR 100 MA/T
SI 61022	△ 8315-619-028	LOET-SI.-GR 1,6 A/T
SI 61026	△ 8315-621-027	LOET-SI.-GR 2,5 A/T
SI 61036	△ 8315-621-027	LOET-SI.-GR 2,5 A/T
SI 61056	△ 8315-621-027	LOET-SI.-GR 2,5 A/T
SI 61061	△ 8315-620-225	LOET-SI.-GR 2 A/T
SI 61066	△ 8315-620-225	LOET-SI.-GR 2 A/T

T 21211	8303-401-299	TRANS.S 298 T TFK/PBF 259
T 40010	8303-287-368	TRANS.BC 368
T 60223	8302-269-091	TRANS.BUZ 90 A TYP 2/3

TR 52001	△ 09245-812.31	TREIBER-UEBERTRAGER/ DRIVER TRANSFORMER
TR 53010	△ 29201-680.01	TRAFO DIODEN-SPLIT DIGI/ DIODE SPLIT TRANSFORMER DIGI

TR 60001	△ 29201-568.97	TRAFO SPERRWANDLER/ B.O.-TYPE CONVERTER TRANSFORMER CPL.
TR 60220	△ 29201-701.97	TRAFO STAND-BY/ TRANSFORMER STAND-BY

Es gelten die Vorschriften und Sicherheitshinweise gemäß dem Service Manual "Sicherheit", Sach-Nummer 72010-800.00, sowie zusätzlich die eventuell abweichenden, landesspezifischen Vorschriften!

Btx \*32700#



The regulations and safety instructions shall be valid as provided by the "Safety" Service Manual, part number 72010-800.00, as well as the respective national deviations.

ÄNDERUNGEN VORBEHALTEN / SUBJECT TO ALTERATION

POS. NR. POS. NO.	SACHNUMMER PART NUMBER	BEZEICHNUNG DESCRIPTION
----------------------	---------------------------	----------------------------

CD 1406	8309-455-052	MELF-Z DIODE 5,1 B 0,5W
CD 1407	8325-004-148	SMD DIODE LS 4148
CD 1411	8309-455-040	MELF-Z DIODE 3,9 B 0,5W
CD 1412	8309-195-042	SMD-DIODE BAR 42 THO
CD 1663	8309-455-052	MELF-Z DIODE 5,1 B 0,5W
CD 1687	8309-455-052	MELF-Z DIODE 5,1 B 0,5W

CIC 1370	8305-949-205	SMD IC SDA9205-2 SIE
CIC 1410	8305-949-360	SMD IC SDA9363 SIE
CIC 1600	8305-949-290	SMD IC SDA9290
CIC 1605	8305-949-251	SMD IC SDA9251-2X
CIC 1610	8305-949-251	SMD IC SDA9251-2X
CIC 1615	8305-949-251	SMD IC SDA9251-2X
CIC 1640	8305-949-281	SMD IC SDA9280-A41
CIC 1650	8305-949-220	SMD IC SDA9220

CL 1461	8140-526-494	SMD DR 1206 0,22UH 10%
CL 1462	8140-526-494	SMD DR 1206 0,22UH 10%

CT 1312	8301-166-051	SMD-TRANS.BCX 51-16
CT 1313	8301-004-849	SMD-TRANS.BC 849 B
CT 1330	8301-004-848	SMD-TRANS.BC 848 B
CT 1350	8301-004-848	SMD-TRANS.BC 848 B
CT 1435	8301-004-848	SMD-TRANS.BC 848 B
CT 1501	8301-004-849	SMD-TRANS.BC 849 B
CT 1506	8301-166-051	SMD-TRANS.BCX 51-16
CT 1511	8301-004-849	SMD-TRANS.BC 849 B
CT 1516	8301-166-051	SMD-TRANS.BCX 51-16
CT 1521	8301-004-849	SMD-TRANS.BC 849 B
CT 1526	8301-166-051	SMD-TRANS.BCX 51-16
CT 1541	8301-004-848	SMD-TRANS.BC 848 B
CT 1545	8301-004-848	SMD-TRANS.BC 848 B
CT 1680	8301-004-848	SMD-TRANS.BC 848 B

IC 1382	8305-440-431	IC TL 431 CLP RP
IC 1430	8305-158-957	IC SDA 9257-2 SIE

L 1303	8140-532-085	SPULE 5X5 085/COIL
L 1306	8140-532-086	SPULE 5X5 086/COIL
L 1312	8140-526-535	DR AX 0411-GA 2,2UH
L 1323	8140-532-085	SPULE 5X5 085/COIL
L 1326	8140-532-086	SPULE 5X5 086/COIL
L 1343	8140-532-085	SPULE 5X5 085/COIL
L 1346	8140-532-086	SPULE 5X5 086/COIL
L 1351	09241-035.97	STABKERNDROSSEL
L 1353	09241-035.97	STABKERNDROSSEL
L 1357	09241-035.97	STABKERNDROSSEL/ BAR CORE CHOK COIL

L 1358	8140-526-412	DR AX 0411 10UH
L 1371	8104-982-014	DAEMPfungSPERLE
L 1378	8104-982-014	DAEMPfungSPERLE/ DAMPING BEAD

Es gelten die Vorschriften und Sicherheitshinweise gemäß dem Service Manual "Sicherheit", Sach-Nummer 72010-800.00, sowie zusätzlich die eventuell abweichenden, landesspezifischen Vorschriften!

Btx \*32700#



The regulations and safety instructions shall be valid as provided by the "Safety" Service Manual, part number 72010-800.00, as well as the respective national deviations.

ÄNDERUNGEN VORBEHALTEN / SUBJECT TO ALTERATION

POS. NR. POS. NO.	SACHNUMMER PART NUMBER	BEZEICHNUNG DESCRIPTION
----------------------	---------------------------	----------------------------

L 1381	8140-526-535	DR AX 0411-GA 2,2UH
L 1396	8104-982-014	DAEMPfungSPERLE/ DAMPING BEAD
L 1401	8140-526-412	DR AX 0411 10UH
L 1402	8140-526-412	DR AX 0411 10UH
L 1403	8140-526-412	DR AX 0411 10UH
L 1407	8140-526-412	DR AX 0411 10UH
L 1411	8140-526-536	DR AX 0411-GA 4,7UH
L 1412	8140-526-536	DR AX 0411-GA 4,7UH
L 1421	8104-982-014	DAEMPfungSPERLE
L 1423	8104-982-014	DAEMPfungSPERLE
L 1432	8104-982-014	DAEMPfungSPERLE
L 1437	8104-982-014	DAEMPfungSPERLE
L 1508	8104-982-014	DAEMPfungSPERLE/ DAMPING BEAD

L 1509	8140-526-535	DR AX 0411-GA 2,2UH
L 1518	8104-982-014	DAEMPfungSPERLE/ DAMPING BEAD
L 1532	8140-526-412	DR AX 0411 10UH
L 1537	8140-526-412	DR AX 0411 10UH
L 1538	8140-526-412	DR AX 0411 10UH
L 1543	8140-526-412	DR AX 0411 10UH
L 1544	8140-526-412	DR AX 0411 10UH
L 1546	8140-526-412	DR AX 0411 10UH
L 1641	8104-982-014	DAEMPfungSPERLE
L 1651	8104-982-014	DAEMPfungSPERLE
L 1656	8104-982-014	DAEMPfungSPERLE/ DAMPING BEAD

L 1662	8140-526-412	DR AX 0411 10UH
L 1686	8104-982-014	DAEMPfungSPERLE/ DAMPING BEAD
L 1687	8140-525-897	DR AX 0411-GA 100UH
L 1691	8104-982-014	DAEMPfungSPERLE/ DAMPING BEAD

Q 1408	8602-331-181	KERRES #181 21,1MHZ
Q 1441	8382-443-204	QUARZ 20,48 MHZ
Q 1695	8382-437-675	QUARZ 6,75MHZ

GRUNDIG

TV

Ersatzteilliste  
Spare Parts List

06 / 96

ERSETZT AUSGABE 11/95  
SUBSTITUTE EDITION 11/95BAUSTEIN SIGNAL+ZF+TUNER  
MODULE SIGNAL +IF+TUNER

SACH-NR. / PART NO.: 29504-162.34

POS. NR. POS. NO.	ABB. FIG.	SACHNUMMER PART NUMBER	ANZ. QTY.	BEZEICHNUNG (D)	DESCRIPTION (GB)
0001.000		29504-201.21		CHIP-TUNER/ATA 1200	CHIP-TUNER/ATA 1200
				WW. = WAHLWEISE	WW. = OPTIONAL

POS. NR. POS. NO.	SACHNUMMER PART NUMBER	BEZEICHNUNG DESCRIPTION
CD 32000	8325-004-148	SMD DIODE LS 4148
CD 32031	8325-004-148	SMD DIODE LS 4148
CD 32032	8325-004-148	SMD DIODE LS 4148
CD 32041	8325-301-582	SMD-DIODE BA 582
CD 32042	8325-301-582	SMD-DIODE BA 582
CD 32043	8325-301-582	SMD-DIODE BA 582
CD 32044	8325-301-582	SMD-DIODE BA 582
CD 32047	8325-301-582	SMD-DIODE BA 582
CD 32048	8325-301-582	SMD-DIODE BA 582
CIC 32030	8305-814-094	SMD IC MC 14094 BD
CT 32026	8301-004-848	SMD-TRANS.BC 848 B
CT 32061	8301-004-848	SMD-TRANS.BC 848 B
CT 32062	8301-004-848	SMD-TRANS.BC 848 B
CT 32063	8301-004-848	SMD-TRANS.BC 848 B
CT 32064	8301-004-848	SMD-TRANS.BC 848 B
CT 32105	8301-004-857	SMD-TRANS.BC 857 B
CT 32111	8301-004-848	SMD-TRANS.BC 848 B
CT 32119	8301-004-848	SMD-TRANS.BC 848 B
CT 32122	8301-004-857	SMD-TRANS.BC 857 B
CT 32123	8301-004-848	SMD-TRANS.BC 848 B
CT 32124	8301-004-857	SMD-TRANS.BC 857 B
CT 32125	8301-004-848	SMD-TRANS.BC 848 B
CT 32128	8301-004-848	SMD-TRANS.BC 848 B
CT 32132	8301-004-848	SMD-TRANS.BC 848 B
CT 32134	8301-004-857	SMD-TRANS.BC 857 B
CT 32251	8301-185-020	SMD-TRANS.BFS 20 ON4158
F 32041	8140-533-605	SPULE 7X7 605
F 32043	8140-535-351	SPULE 7X7 351 FARBE 709
F 32051	8319-009-461	OFWFL K9460 SIE
F 32052	8319-009-455	OFWFL L9455M
F 32054	8319-003-450	OFW K3450K SIE
WW.	8319-003-955	OFW G 3955 SIE
WW.	8319-003-951	OFW G 3957 M SIE
F 32101	8141-112-405	FILTER 7X7 405
F 32109	8602-755-042	CER.TRAP 42
F 32121	8141-111-360	FILTER 7X7 360
F 32109	8602-755-542	KERTRAP #42 6MHZ
IC 32040	8305-344-474	IC TDA4474 TEMIC

Es gelten die Vorschriften und Sicherheitshinweise gemäß dem Service Manual "Sicherheit", Sach-Nummer 72010-800.00, sowie zusätzlich die eventuell abweichenden, landesspezifischen Vorschriften!



The regulations and safety instructions shall be valid as provided by the "Safety" Service Manual, part number 72010-800.00, as well as the respective national deviations.

Btx \*32700#

ÄNDERUNGEN VORBEHALTEN / SUBJECT TO ALTERATION

Ersatzteilliste  
Spare Parts List

02 / 96

ERSETZT AUSGABE 11/95  
SUBSTITUTE EDITION 11/95BILDROHRPLATTE  
PICTURE TUBE BOARD

SACH-NR. / PART NO.: 29305-122.04

POS. NR. POS. NO.	ABB. FIG.	SACHNUMMER PART NUMBER	ANZ. QTY.	BEZEICHNUNG (D)	DESCRIPTION (GB)
0001.000	△	29303-752.15		BILDROHRFASSUNG	CRT SOCKET
0002.000		29303-153.02	3	MONTAGECLIP IC730/750/770	MOUNTING CLIP IC730/750/770
0003.000	△	29201-361.01		FOKUS UND UG2-REGLER	FOCUS AND UG2-CONTROL

POS. NR. POS. NO.	SACHNUMMER PART NUMBER	BEZEICHNUNG DESCRIPTION
C 722	8563-731-612	KF 21 0,01 UF 20% 1500V
C 733	8668-203-002	ABBLOCK-C 0,022UF -GR 25V
C 736	8668-203-023	ABBLOCK-C 0,1 UF -GR 25V
C 753	8668-203-002	ABBLOCK-C 0,022UF -GR 25V
C 756	8668-203-023	ABBLOCK-C 0,1 UF -GR 25V
C 773	8668-203-002	ABBLOCK-C 0,022UF -GR 25V
C 776	8668-203-023	ABBLOCK-C 0,1 UF -GR 25V
D 703	8309-720-034	Z DIODE 3,3 B 0,5W
D 756	8309-215-045	DIODE 1N4148
IC 730	8305-336-111	IC TDA6111N4
IC 750	8305-336-111	IC TDA6111N4
IC 770	8305-336-111	IC TDA6111N4
L 710	8140-526-530	DR AX 0411-GA 33UH
R 703	△ 8700-007-449	KSW 0207 100 OHM 5%

POS. NR. POS. NO.	SACHNUMMER PART NUMBER	BEZEICHNUNG DESCRIPTION
C 722	8563-731-612	KF 21 0,01 UF 20% 1500V
C 733	8668-203-002	ABBLOCK-C 0,022UF -GR 25V
C 736	8668-203-023	ABBLOCK-C 0,1 UF -GR 25V
C 753	8668-203-002	ABBLOCK-C 0,022UF -GR 25V
C 756	8668-203-023	ABBLOCK-C 0,1 UF -GR 25V
C 773	8668-203-002	ABBLOCK-C 0,022UF -GR 25V
C 776	8668-203-023	ABBLOCK-C 0,1 UF -GR 25V
D 703	8309-720-034	Z DIODE 3,3 B 0,5W
D 756	8309-215-045	DIODE 1N4148
IC 730	8305-336-111	IC TDA6111N4
IC 750	8305-336-111	IC TDA6111N4
IC 770	8305-336-111	IC TDA6111N4
L 710	8140-526-530	DR AX 0411-GA 33UH
R 703	△ 8700-007-449	KSW 0207 100 OHM 5%

Es gelten die Vorschriften und Sicherheitshinweise gemäß dem Service Manual "Sicherheit", Sach-Nummer 72010-800.00, sowie zusätzlich die eventuell abweichenden, landesspezifischen Vorschriften!



The regulations and safety instructions shall be valid as provided by the "Safety" Service Manual, part number 72010-800.00, as well as the respective national deviations.

Btx \*32700#

ÄNDERUNGEN VORBEHALTEN / SUBJECT TO ALTERATION



Ersatzteilliste  
Spare Parts List



4 / 96


TV

BILDROHRPLATTE  
PICTURE TUBE BOARD

SACH-NR. / PART NO.: 29305-122.10

POS. NR. ABB.	SACHNUMMER ANZ.	BEZEICHNUNG	DESCRIPTION
POS. NO. FIG.	PART NUMBER QTY.		

0001.000		29303-752.15	BILDROHRFASSUNG	CRT SOCKET
0002.000		29201-361.18	FOKUS U.UG2-REGLER	FOCUS AND UG2-CONTROLLER
0003.000		29303-153.02	MONTAGECLIP IC	ASSEMBLY CLIP IC

POS. NR.	SACHNUMMER	BEZEICHNUNG	POS. NR.	SACHNUMMER	BEZEICHNUNG
POS. NO.	PART NUMBER	DESCRIPTION	POS. NO.	PART NUMBER	DESCRIPTION
C 722	8563-731-612	KF 21 0,01 UF 20% 1500V			
C 733	8668-203-002	ABBLOCK-C 0,022UF -GR			
C 736	8668-203-023	ABBLOCK-C 0,1 UF -GR			
C 753	8668-203-002	ABBLOCK-C 0,022UF -GR			
C 756	8668-203-023	ABBLOCK-C 0,1 UF -GR			
C 773	8668-203-002	ABBLOCK-C 0,022UF -GR			
C 776	8668-203-023	ABBLOCK-C 0,1 UF -GR			
D 703	8309-720-033	Z DIODE 3,3 C 0,5W			
D 756	8309-215-045	DIODE 1N4148			
IC 730	8305-336-111	IC TDA6111N4			
IC 750	8305-336-111	IC TDA6111N4			
IC 770	8305-336-111	IC TDA6111N4			
L 710	8140-526-530	DR AX 0411-GA 33UH			
R 703	 8700-007-449	KSW 0207 100 OHM 5%			

Es gelten die Vorschriften und Sicherheitshinweise gemäß dem Service Manual "Sicherheit", Sach-Nummer 72010-800.00, sowie zusätzlich die eventuell abweichenden, landesspezifischen Vorschriften!



The regulations and safety instructions shall be valid as provided by the "Safety" Service Manual, part number 72010-800.00, as well as the respective national deviations.

Btx \*32700#

ÄNDERUNGEN VORBEHALTEN / SUBJECT TO ALTERATION