

SERVICE MANUAL

ALBA

CTV 4855

20" COLOUR TELEVISION
WITH TELETEXT

For Service Manuals
MAURITRON SERVICES
8 Cherry Tree Road, Chinnor
Oxfordshire, OX9 4QY.
Tel (01844) 351694
Fax (01844) 352554
email: - mauritron@dial.pipex.com

ALBA

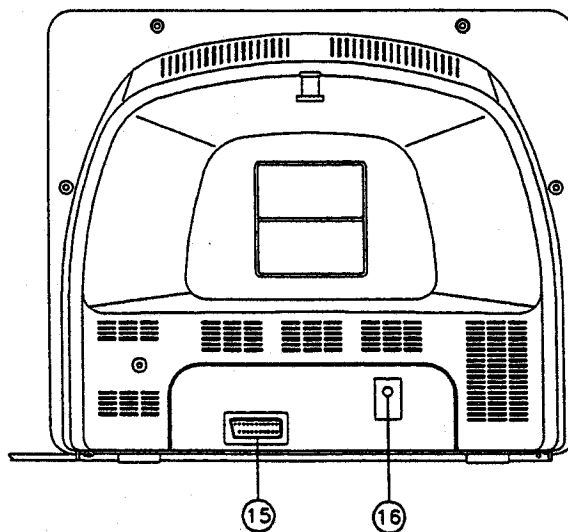
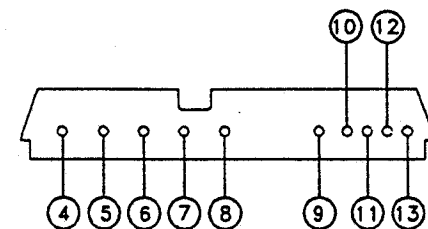
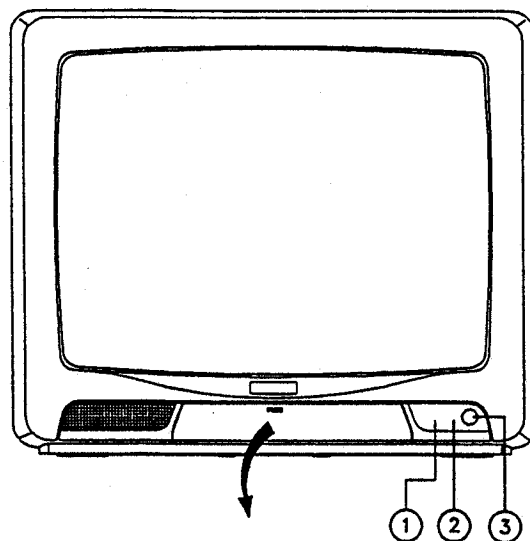
▲ BUSH

harvard

HiNARI

CONTROL LOCATION

1. Remote Sensor
2. Power Indicator
3. Power Switch (ON/OFF)
4. TV/AV Button
5. Memory Button
6. Tune Down Button
7. Tune Up Button
8. Auto Search Button
9. Picture Selector Button
10. Volume/Picture Function Down Button
11. Volume/Picture Function Up Button
12. Program Down Button
13. Program Up Button
14. Antenna Input Socket (Tuner)
15. 21 Pin Socket



ALIGNMENT INSTRUCTION

I. PLEASE READ BEFORE ATTEMPTING SERVICE

1. Never disconnect any leads while receiver is in operation.
2. Disconnect all power before attempting any repairs.
3. Do not short any portion of the circuit while power is on.
4. For safety reasons, all parts replaced should be identical, (for parts and part numbers see parts list).
5. Before alignment the set must be pre-heated for 30 minutes or more and erase magnetism thoroughly from CRT front chassis frame by erase coil.

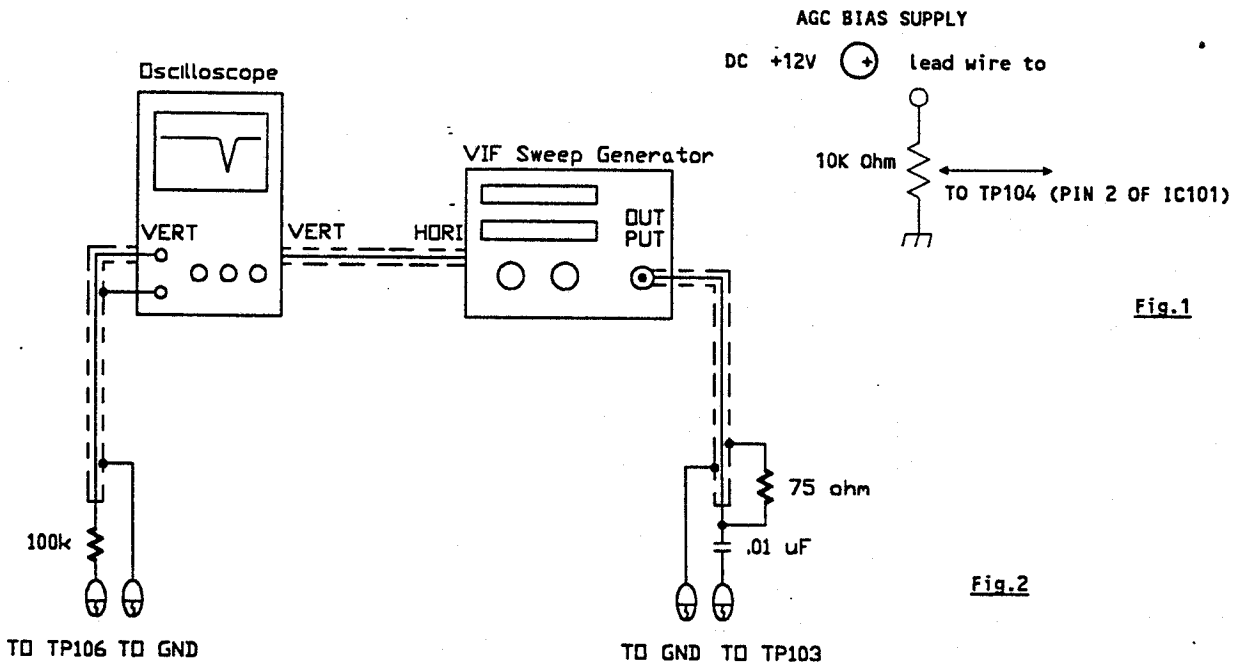
II. TEST EQUIPMENT

- | | |
|---|--|
| 1. VIF Sweep Generator | 8. High Voltage Meter |
| 2. SIF Sweep Generator | 9. Ampere Meter (0.5 Class, DC 3mA Max.) |
| 3. Colour Bar/Dot/Cross Hatch Generator | 10. Demagnetizing Coil |
| 4. DC Power Supply (14V) | 11. Philips Pattern Generator |
| 5. Oscilloscope | 12. Frequency Counter |
| 6. Vacuum Tube Voltmeter | 13. Continuous Waveform Generator |
| 7. Volt Ohmmeter | |

III. TANK COIL ALIGNMENT

A. PREPARATION STEP (SEE FIG.2)

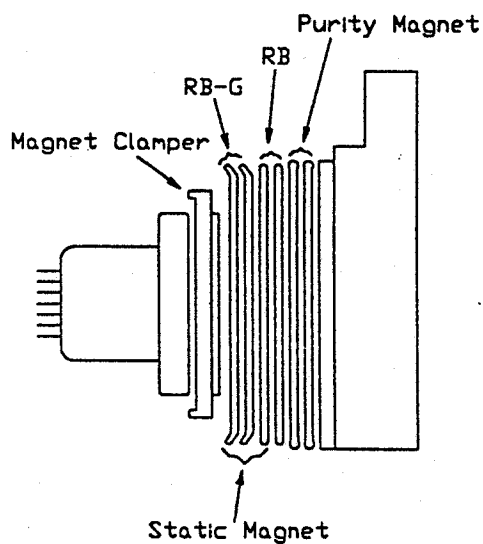
1. Connect OUTPUT lead of VIF Sweep Generator between TP103 (Pin 4 of IC101) and ground.
2. Connect lead of FROM DET between TP106 (Pin 19 of IC101) and ground.
3. Apply a +14V DC across C423 (+).
4. Apply a +5.2V DC dummy AGC bias to TP104 (Pin 2 of IC101). (See Fig.1)



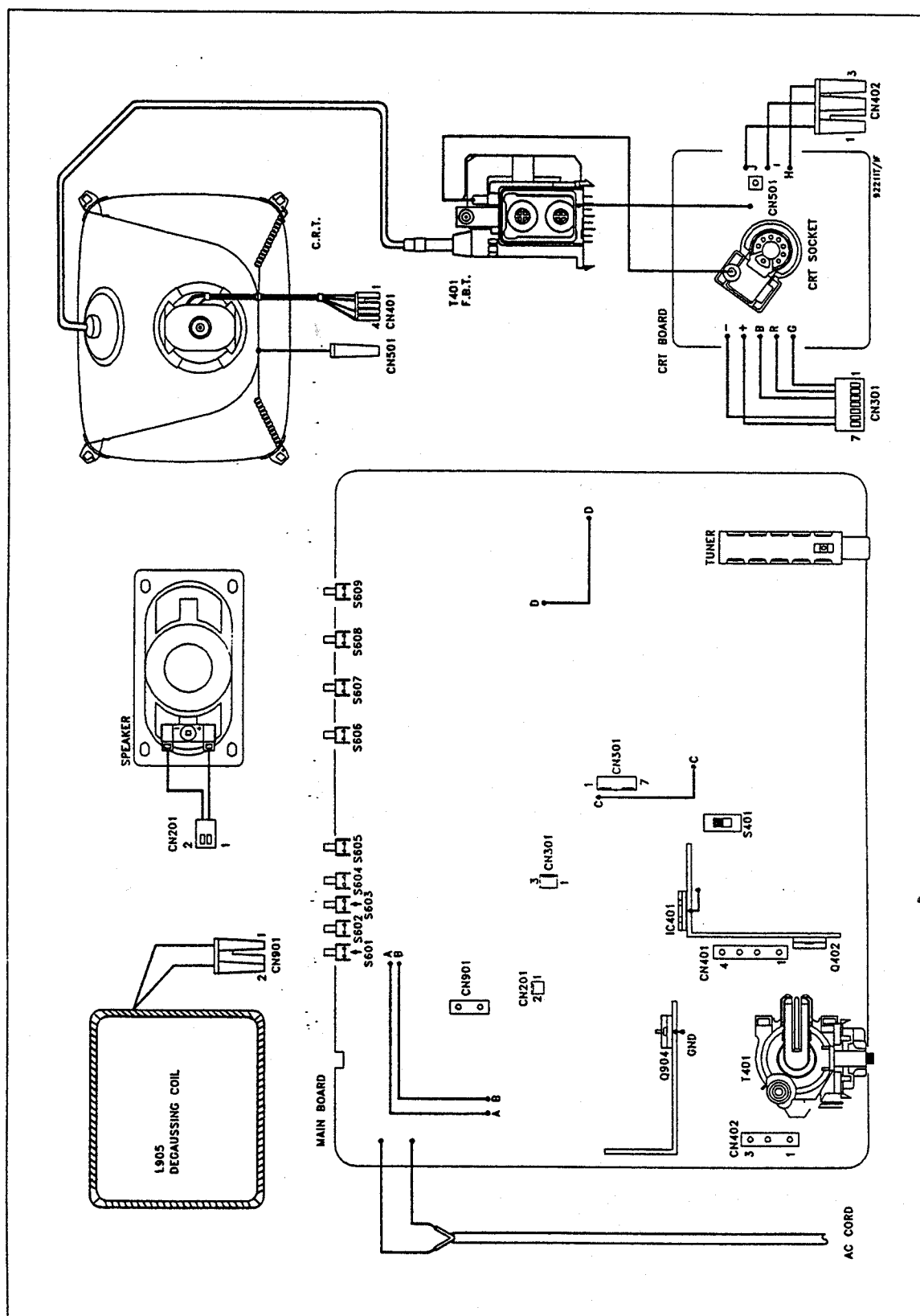
XVIII. CONVERGENCE ADJUSTMENT (SEE FIG.12)

1. Receive a crosshatch pattern.
2. Unfix the convergence magnet clumper and align red with blue dots at the center of the screen by rotating (R,B) static convergence magnets.
3. Align Red/Blue with green dots at the center of the screen by rotating (RB-G) static convergence magnet.
4. Fix the convergence magnets by turning the clumper.
5. Remove the DY wedges and slightly tilt the deflection yoke horizontally and vertically to obtain the good overall convergence.
6. Fix the deflection yoke by wedges.
7. If purity error is found, follow "PURITY ADJUSTMENT" instructions.

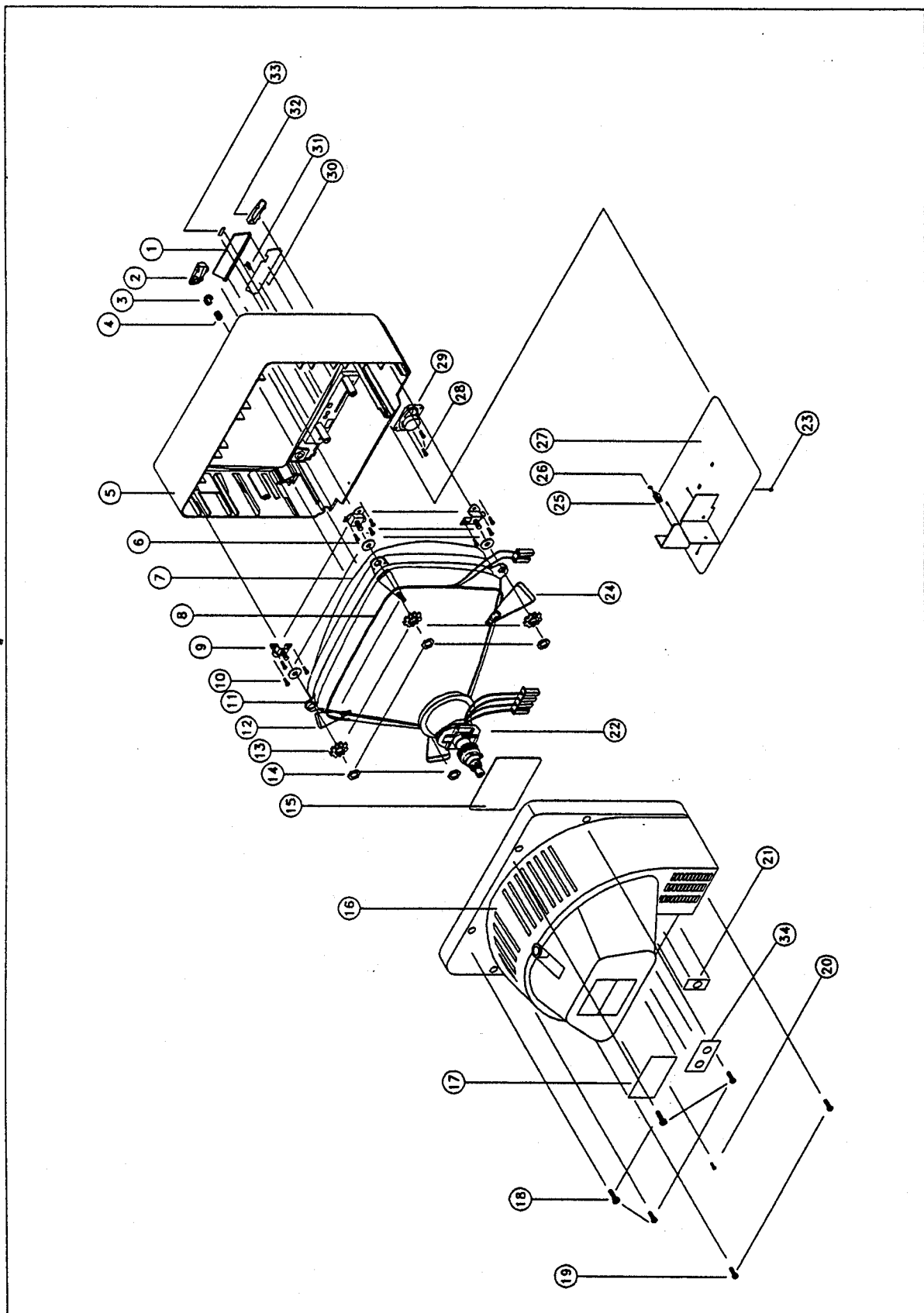
Fig.12



WIRING DIAGRAM



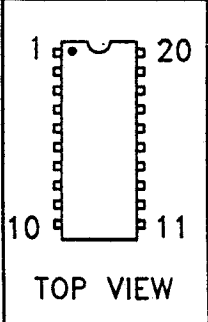
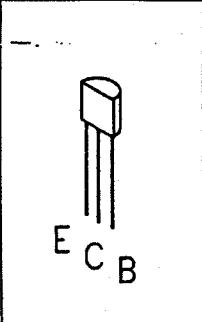
EXPLODED VIEW DIAGRAM



EXPLODED VIEW PARTS LIST:

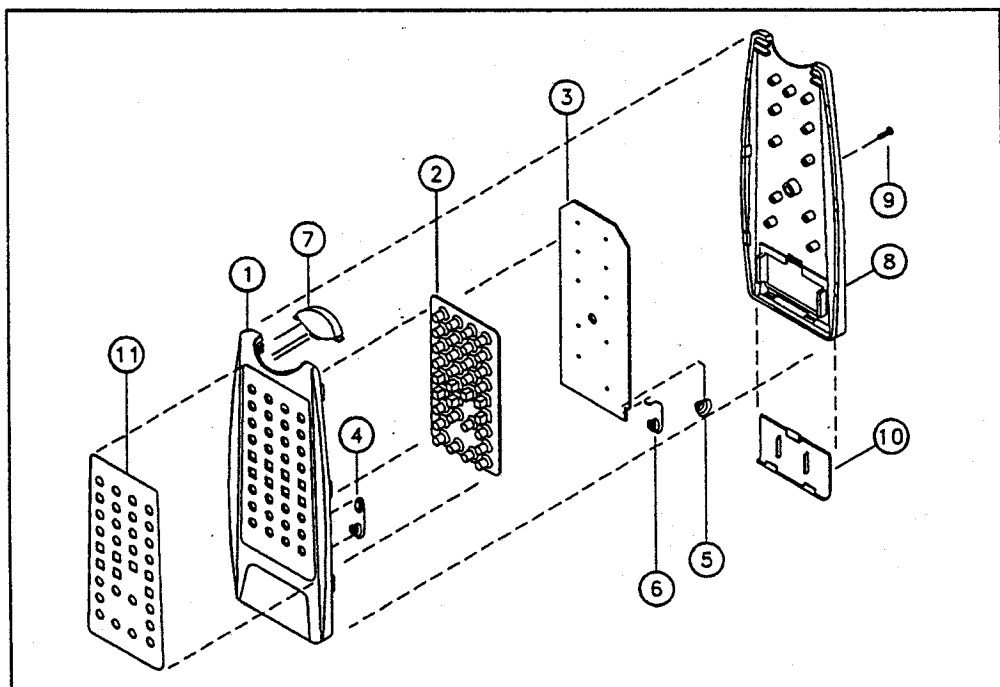
<u>LOCATION</u>	<u>PARTS NO.</u>	<u>DESCRIPTION</u>	<u>QTY</u>
1	219-A12001-XX	PANEL DOOR	1
2	263-A12001-01	FRONT LENS	1
3	292-A12001-01	POWER KNOB	1
4	477-921501-01	COMPRESSION SPRING	1
5	200-A12001-XX	CABINET FRONT	1
6	334-391501-01	RUBBER RING (T=3.0)	4
7		20" CRT	1
8		20" DEGAUSSING COIL	1
9	428-A22001-01	CRT MOUNTING BRACKET	4
10	614-400420-10	SELF-TAPPING SCREW 4x20mm	12
11		FLAT BRAIDED WIRE	1
12	259-911501-01	DEGAUSSING COIL CLIP	2
13	437-371602-01	PICTURE TUBE WASHER	4
14	620-601050-10	HEX NUT M6	4
15		C.R.T. P.C. BOARD ASS'Y	1
16	202-A12001-XX	CABINER BACK	1
17	412-A12001-03	MODEL PLATE	1
18	614-500425-00	SELF-TAPPING SCREW 5x25mm	4
19	614-400420-10	SELF-TAPPING SCREW 4x20mm	2
20	614-400412-00	SELF-TAPPING SCREW 4x12mm	1
21	418-922040-01	TUNER COVER	1
22		DEFLLECTION YOKE	1
23	259-922101-01	P.C.B. SUPPORTER	1
24	259-922002-01	DEGAUSSING COIL CLIP	2
25		POWER SWITCH	1
26	239-391201-01	ADAPTOR FOR POWER SWITCH	1
27		MAIN P.C. BOARD ASS'Y	1
28	614-400410-10	SELF-TAPPING SCREW 4x10mm	2
29		SPEAKER	1
30	418-A12002-01	PRESET OVERLAY	1
31		DOOR LOCK ASS'Y	1
32	403-A12001-01	SPEAKER GRILLE	1
33	286-922001-XX	NAME PLATE	1

TRANSISTOR & IC IDENTIFY

 <p>TOP VIEW</p>	
TC9012F	2SC2001K/L

REMOTE HANDSET UNIT OF EXPLODED VIEW PARTS LIST :

LOCATION	PARTS NO.	DESCRIPTION	QTY
1	201-000901-XX	TOP CABINET	1
2	334-000202-01	CONDUCTIVE RUBBER	1
3		HANDSET P.C. BOARD ASS'Y	1
4	477-390203-01	CONTACT SPRING WIRE +, - VE	1
5	477-390502-01	CONTACT SPRING WIRE - VE	1
6	477-390501-01	CONTACT SPRING WIRE + VE	1
7	263-000901-01	FRONT LENS	1
8	203-000901-XX	BOTTOM CABINET	1
9	610-260108-00	SELF-TAPPING SCREW R/T 2.6 x 8 mm	1
10	210-000901-XX	BATTERY COVER	1
11	411-000902-XX	NAME PLATE	1



90-0000-000

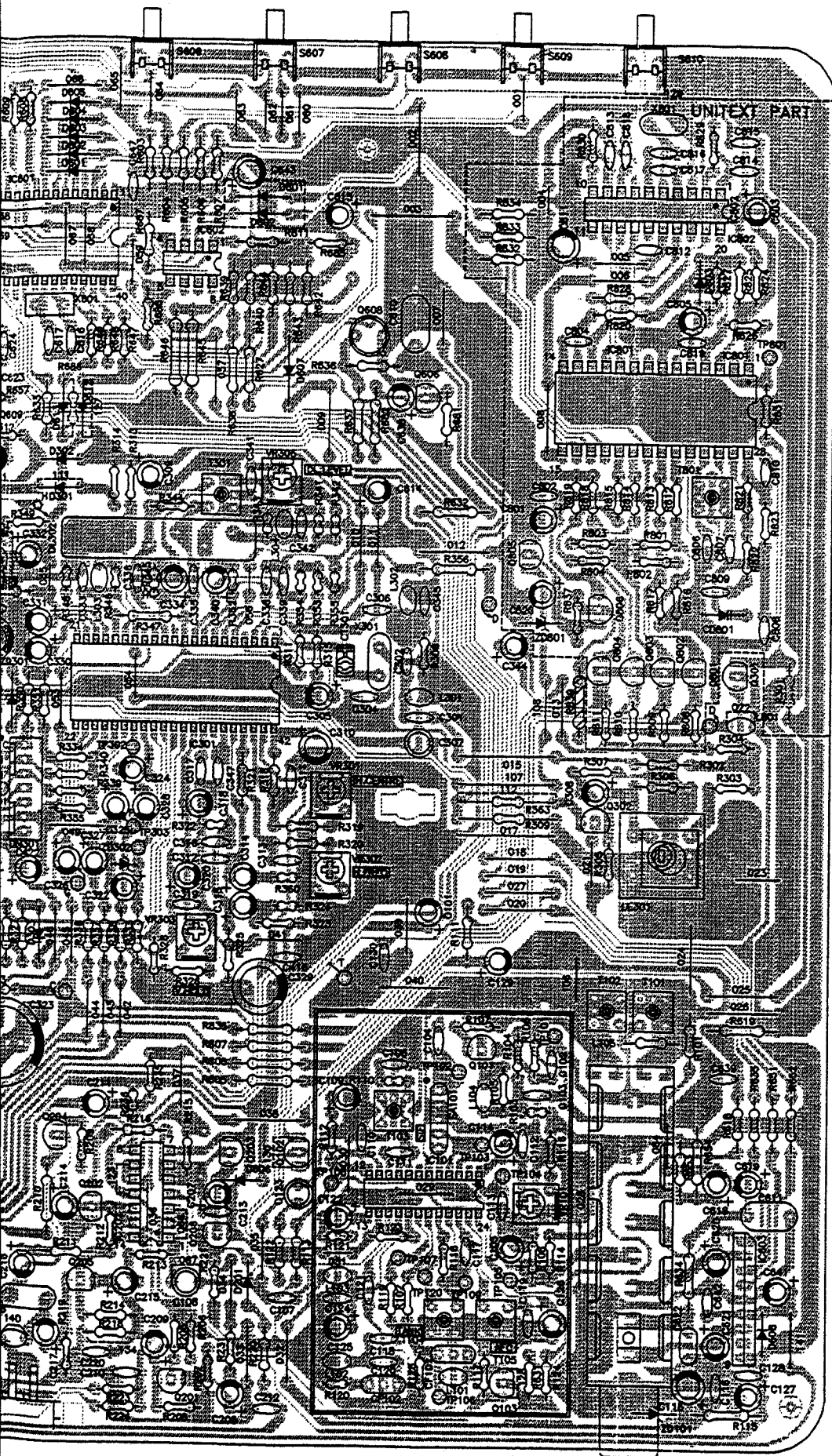
AC INPUT

FUSE 13.15H/250V

CAUTION - LIVE AREA

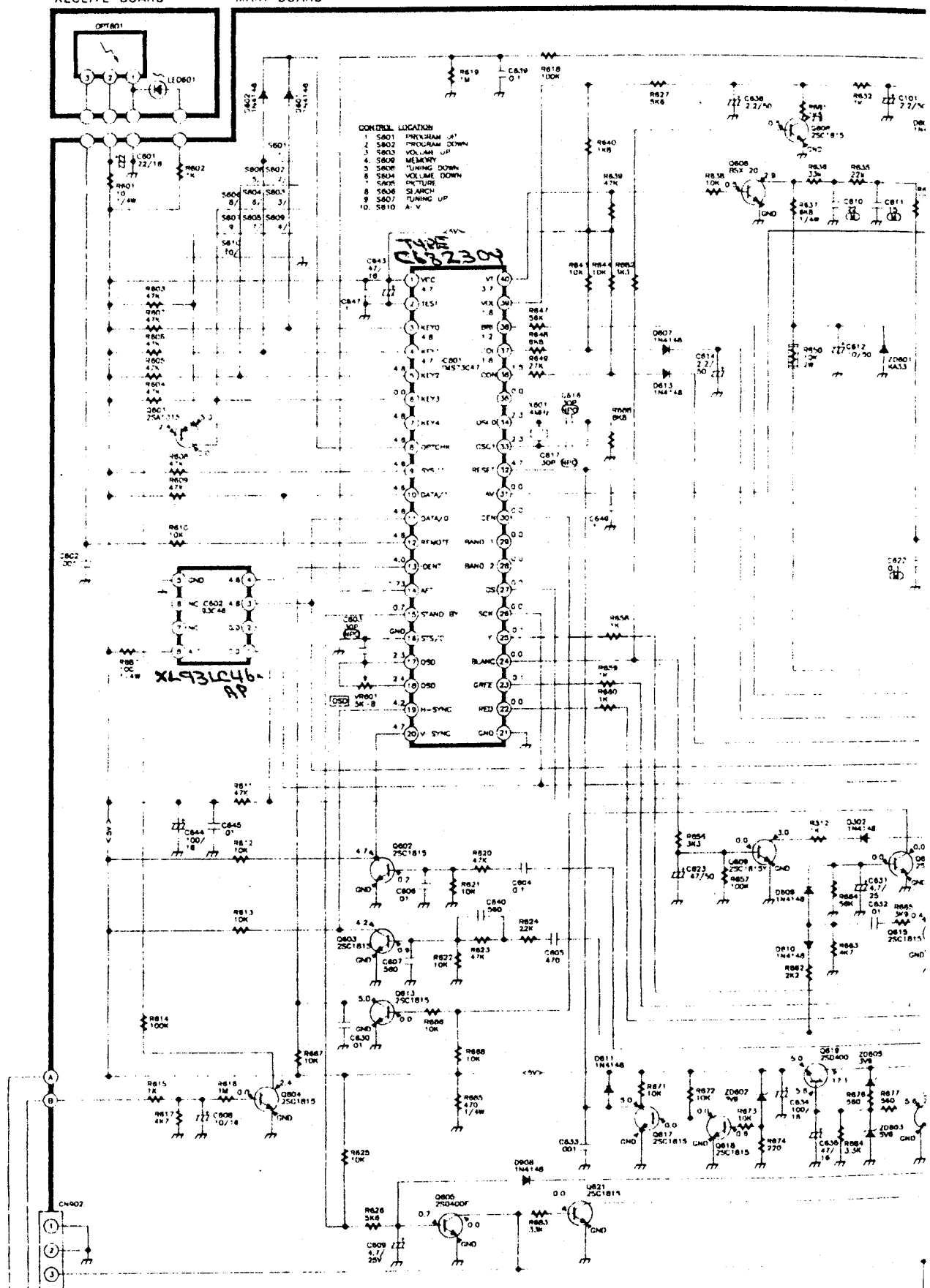
SERVICE

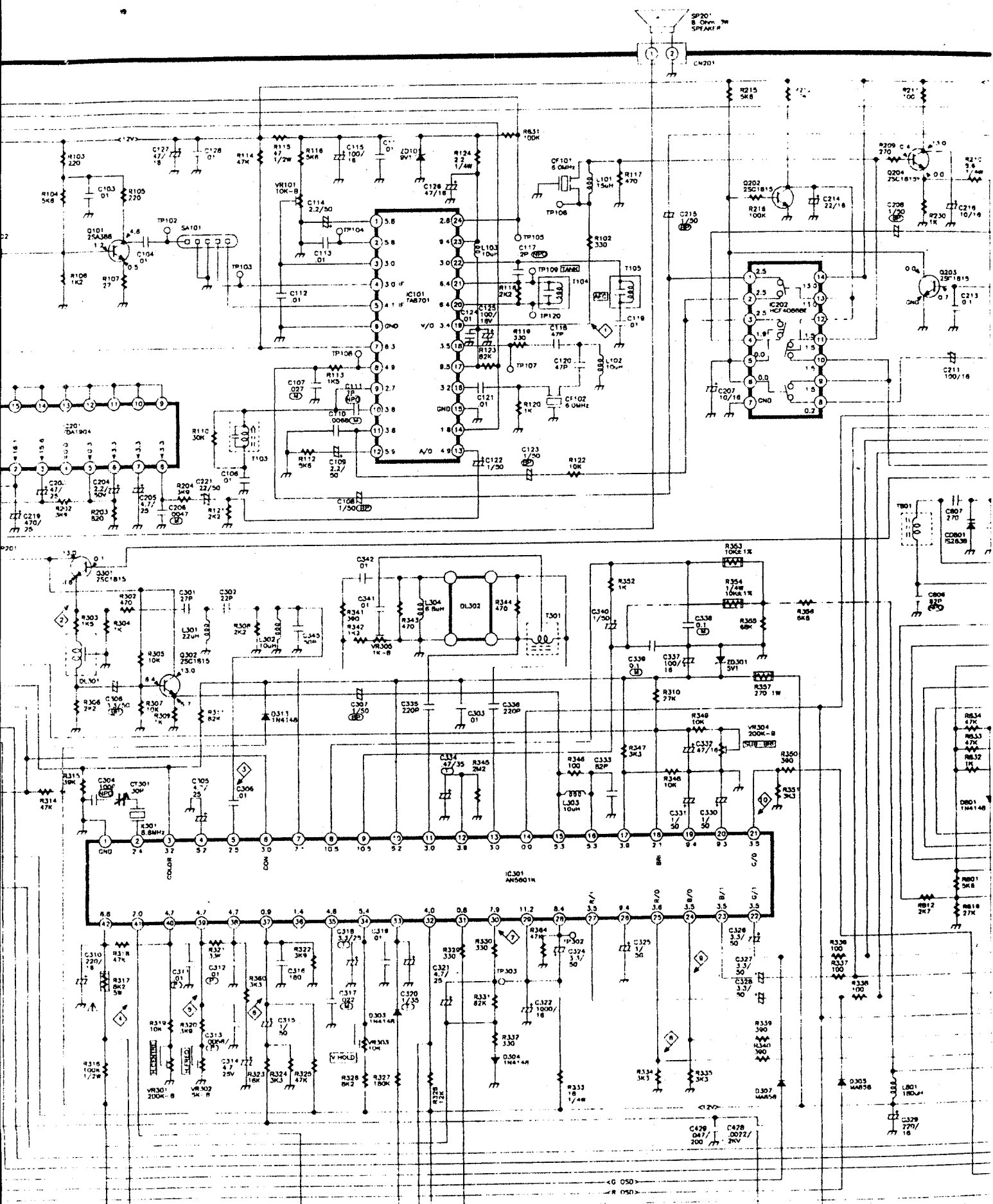
NORMAL



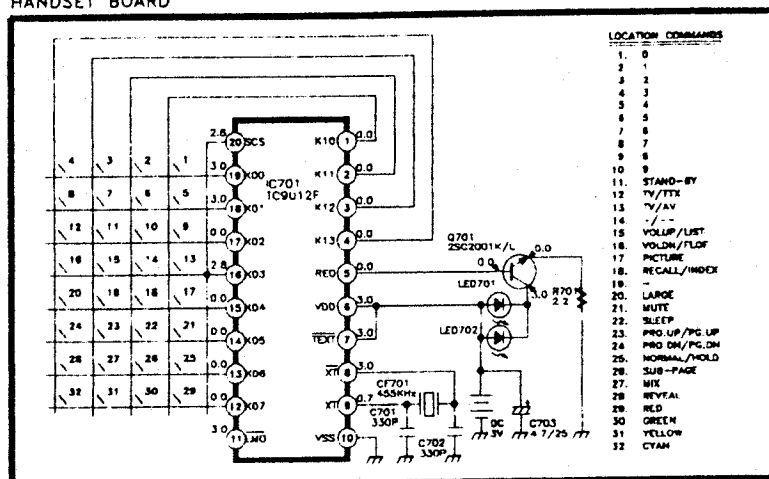
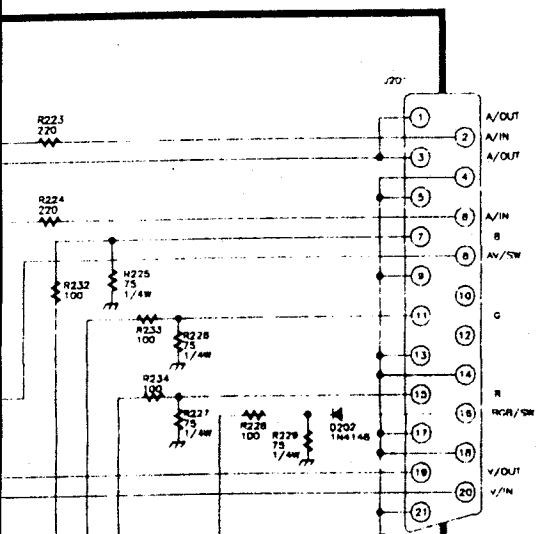
UNITEXT PART

MAIN BOARD

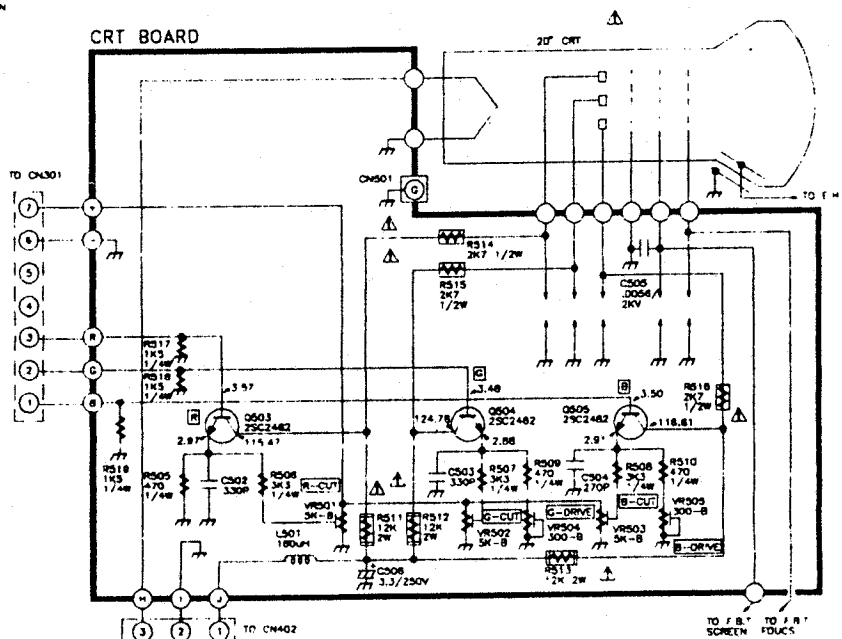




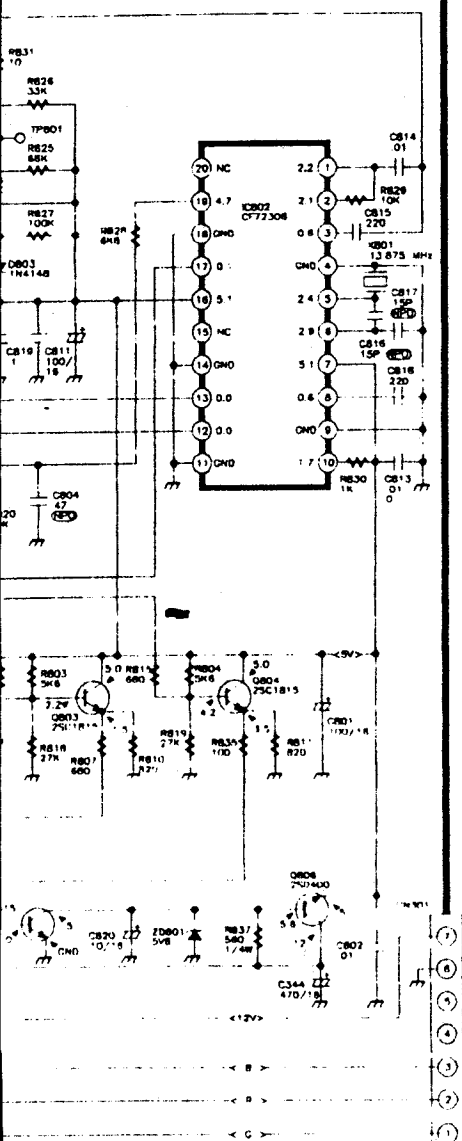
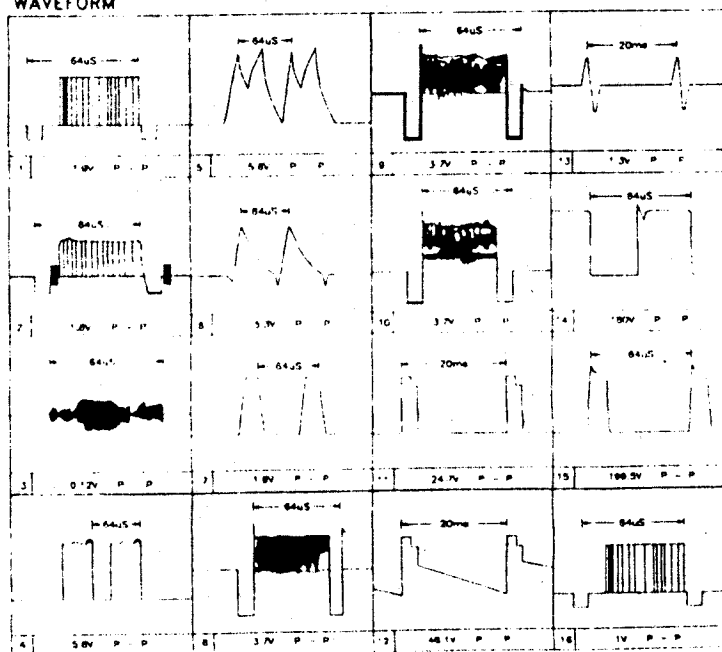
HANDSET BOARD

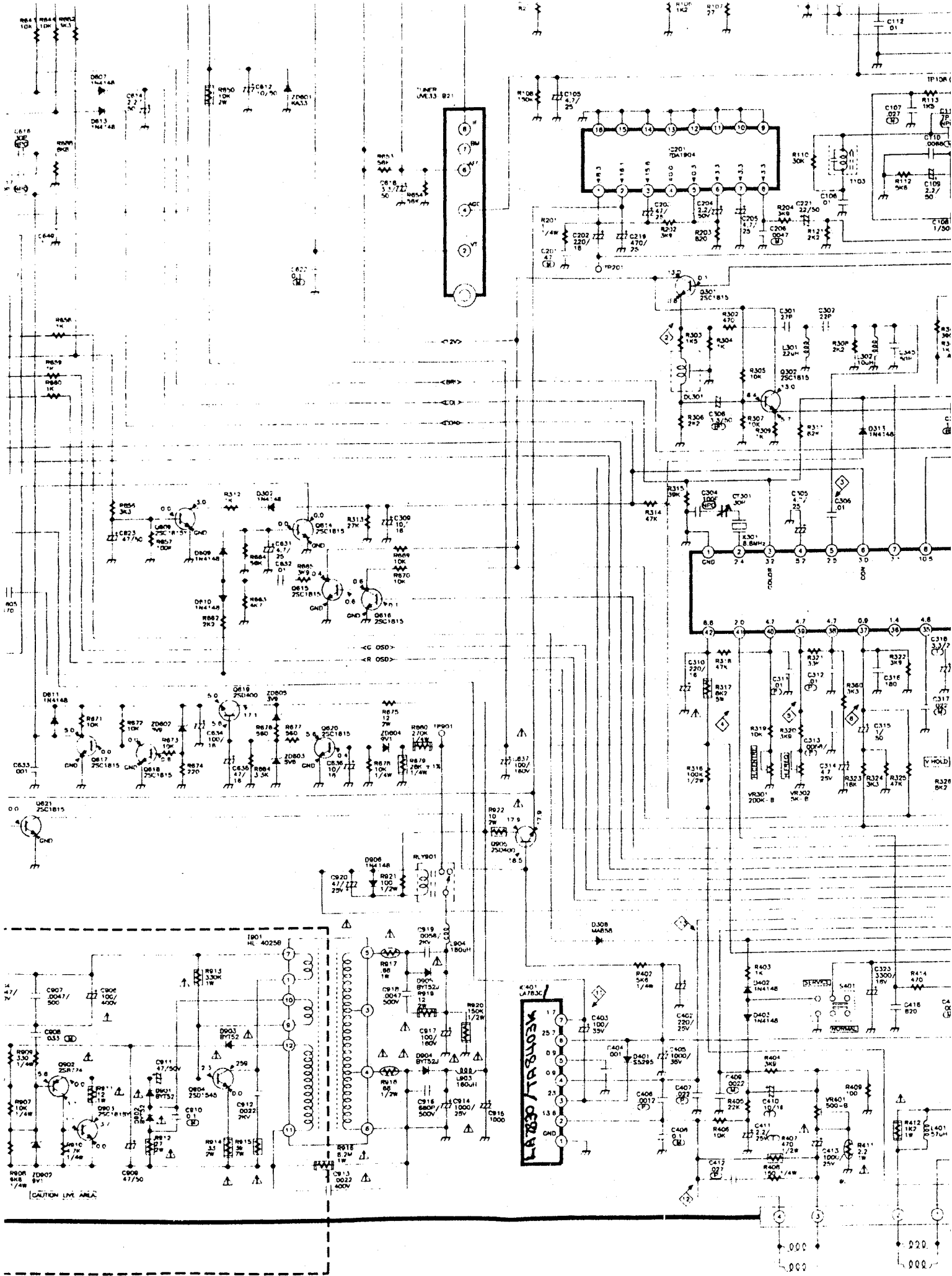


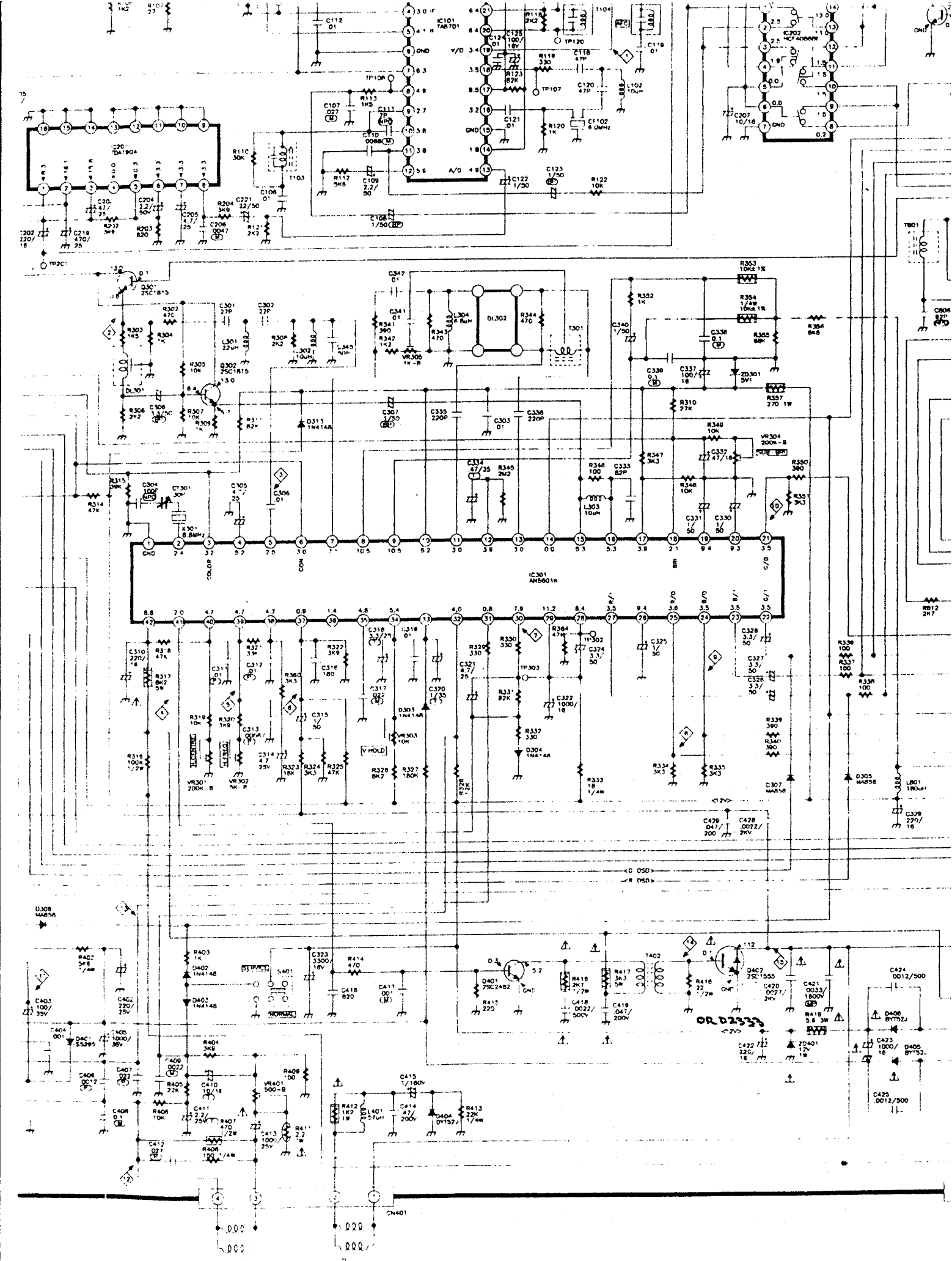
CRT BOARD

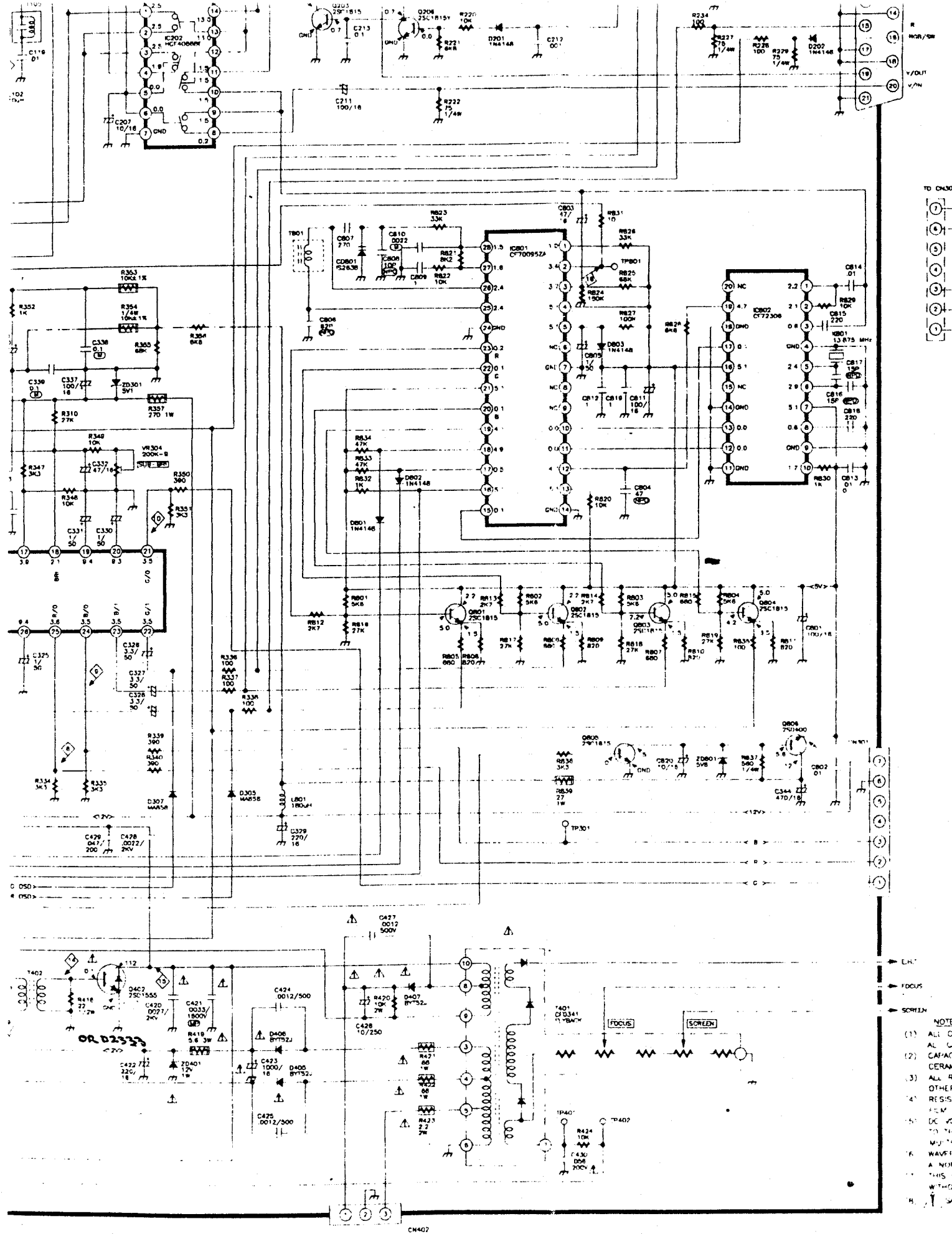


WAVEFORM







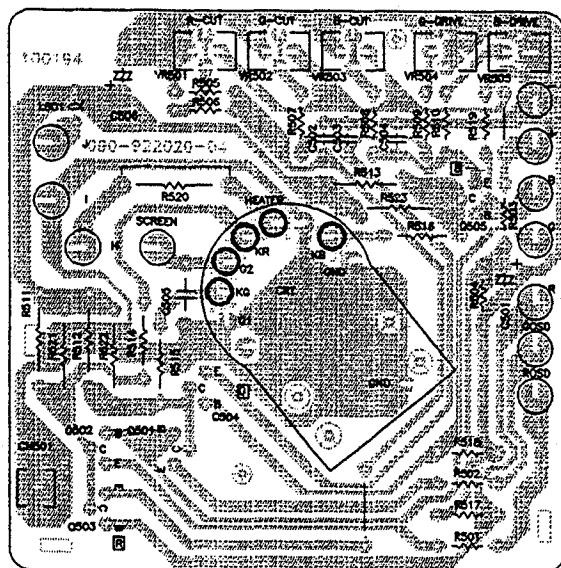


- NOTE
- (1) ALL CAP
 - (2) CAPACIT
 - (3) ALL RES
 - (4) OTHER
 - (5) FILM RE
 - (6) DC VOL
 - (7) TO THE
 - (8) MULTI
 - (9) WAVEFO
 - (10) A NORM
 - (11) THIS C
 - (12) WITHO
 - (13) SAV

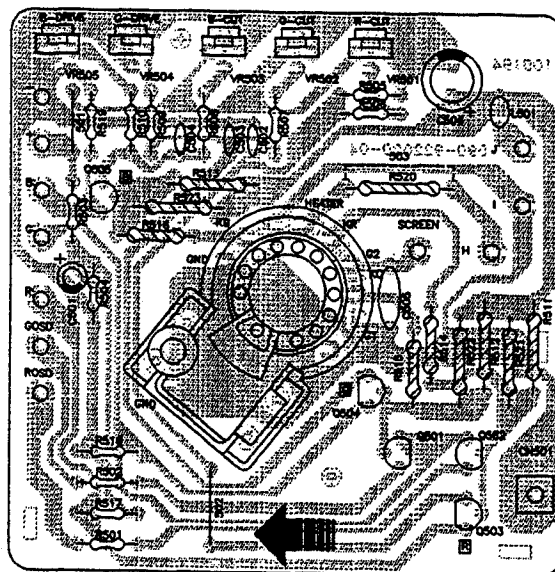
COMPONENT DIAGRAM OF POWER SUPPLY BOARD

CRT BOARD

(BOTTOM VIEW)

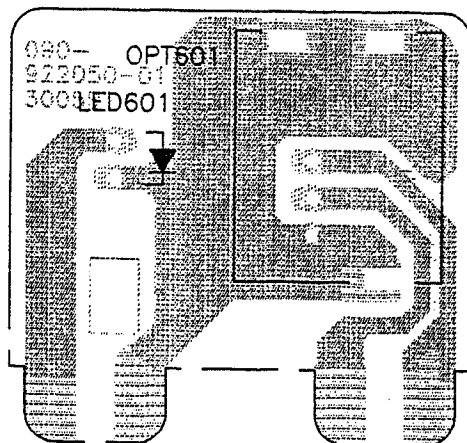


(TOP VIEW)

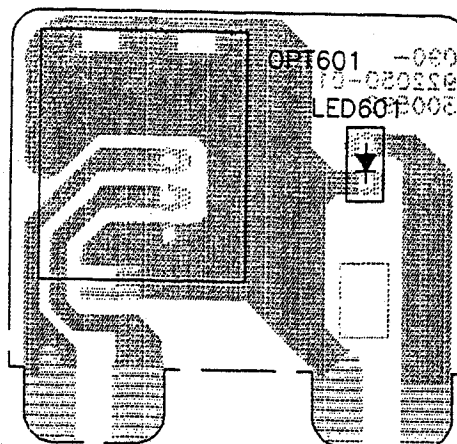


RECEIVE BOARD

(BOTTOM VIEW)



(TOP VIEW)

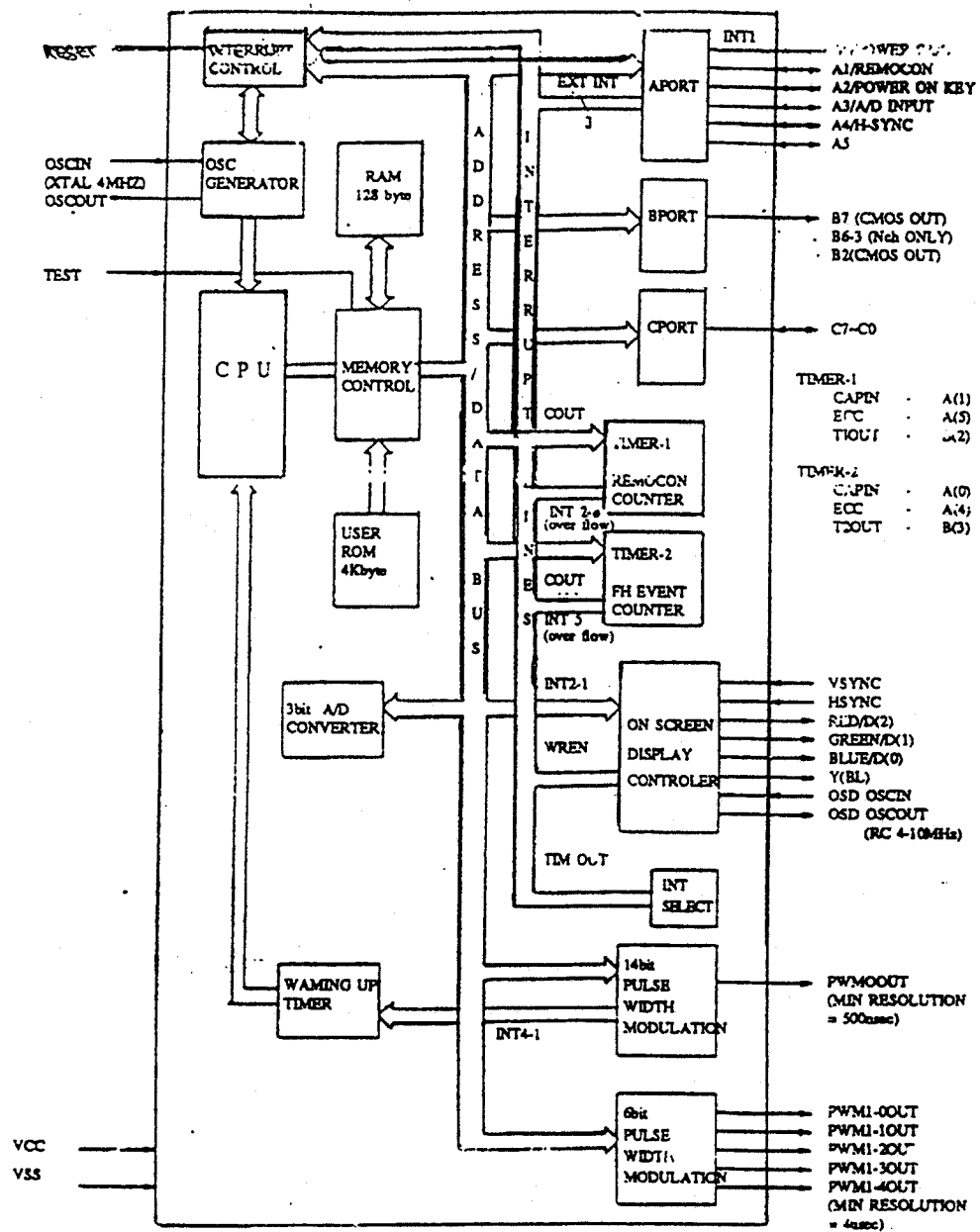


For Service Manuals
MAURITRON SERVICES
 8 Cherry Tree Road, Chinnor
 Oxfordshire, OX9 4QY.
 Tel (01844) 351694
 Fax (01844) 352554
 email: mauritron@dial.pipex.com

TMS73C47

8 bit Microcontroller

2. TMS73C47 BLOCK DIAGRAM



UMS13C47 **8 bit Microcontroller**

3.2 Description

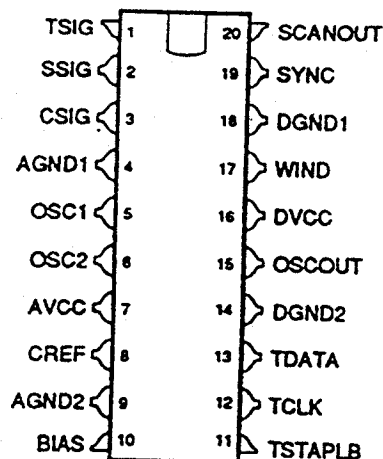
TABLE 3-1. DESCRIPTION

NAME	PIN #	I/O	REMARK	DISRIPTION
A0	11	I/O	Power fail int.	A0~A5 are normal I/O pins, and can be used for interrupt or special input pin by S/W.
A1	12	I/O	Remocon int.	
A2	15	I/O	Power on key int.	
A3	14	I/O	ADC input.	
A4	13	I/O	Event count int (Timer 2)	
A5	16	I/O	Event count int (Timer 1)	
B2	31	O	CMOS output	B2~B7 are output ports only. Open drain ports can be applied max 12V.
B3	30	O	Open drain	
B4	29	O	Open drain	
B5	28	O	Open drain	
B6	27	O	Open drain	
B7	26	O	CMOS output	
C0	3	I/O		C0~C7 are normal I/O pins.
C1	4	I/O		
C2	5	I/O		
C3	6	I/O		
C4	7	I/O		
C5	8	I/O		
C6	9	I/O		
C7	10	I/O		
OSC1 FOR OSD	17	I		D2~D0 are can be used for normal output port by S/W.
OSC2 FOR OSD	18	O		
H-Sync	19	I		
V-Sync	20	I		
Red	22	O	D2	
Green	23	O	D1	
Blue	24	O	D0	
Yout	25	O		6bit PWM 6bit PWM 6bit PWM 6bit PWM 6bit PWM 6bit PWM 14bit PWM
OSC2 for CPU	33	I		
OSC1 for CPU	34	O		
D/A 1	39	O	Open drain	
D/A 2	38	O	Open drain	
D/A 3	37	O	Open drain	
D/A 4	36	O	Open drain	
D/A 5	35	O	Open drain	
D/A 6	40	O	CMOS output	
VDD	1			Should be fixed '0'
TEST	2			
VSS	21			
RESET	32			

**ASICTEXT
CUSTOM FAMILY
PRODUCT PREVIEW**

**TELETEXT
DATA SLICER
CF72306**

- Forms a custom 2-chip solution when used with an ASICTEXT decoder
- Low power 1 μ m CMOS (<100mW)
- Standard 20 pin/300mil package
- Tolerates a range of video distortions
- Operates with 13.875 MHz fundamental mode crystal



**CF72306
20-PIN/300 MII N PLASTIC**

description

The CF72306 is a new device comparable with the CF72303 data slicer currently in production by TI. The CF72306 teletext data slicer is the analogue component of the Texas Instruments (TI) teletext system. The TI teletext system is a two-chip solution to the teletext function and comprises a data slicer and a digital decoder.

The data slicer performs the functions of composite sync separation and teletext data extraction and data clock regeneration from the received video signal and passes clock, data and composite sync signals to the digital decoder chip.

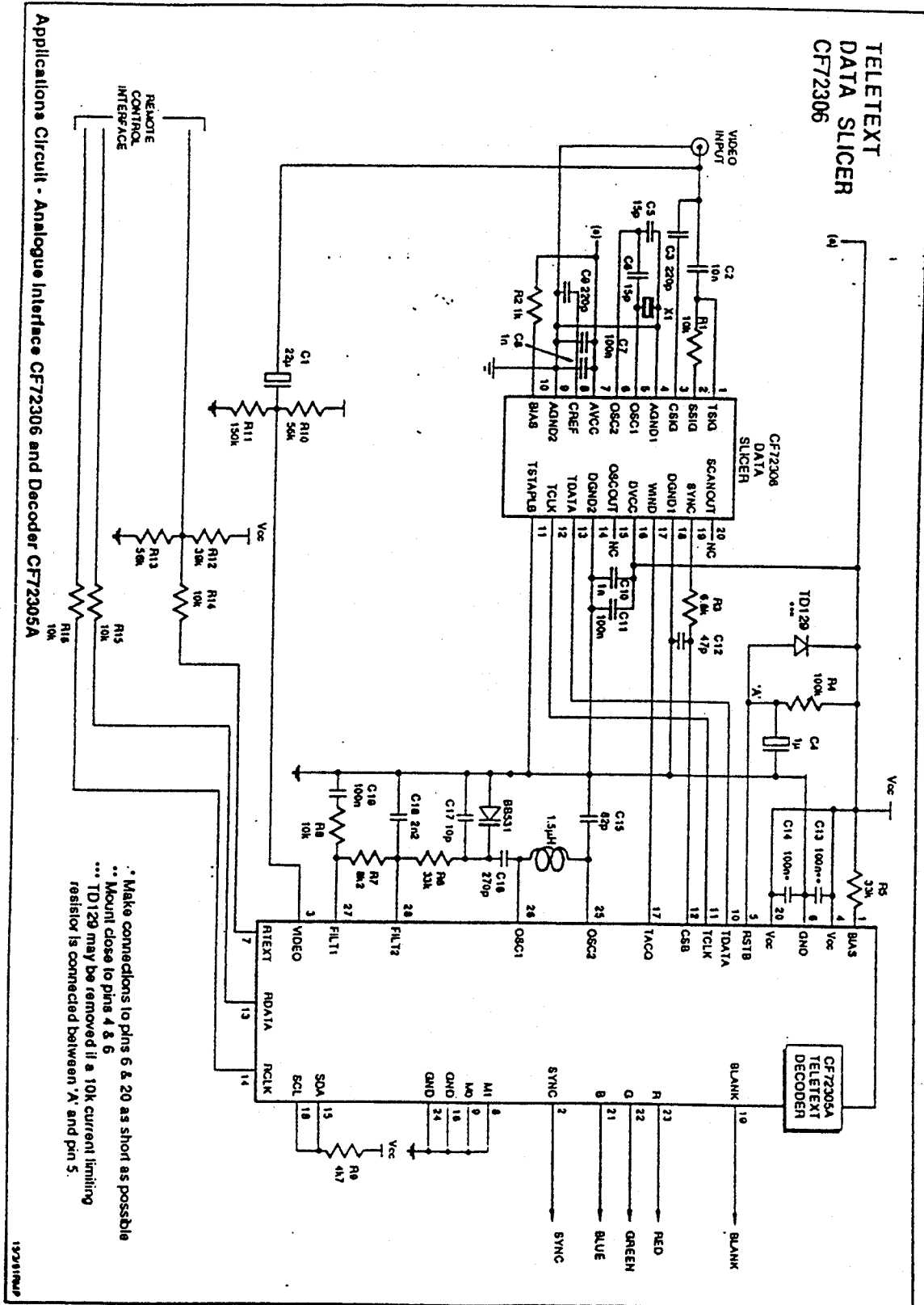
The CF72306 data slicer has the following features that distinguish it from the CF72303 data slicer:

- The sync-separator slicing level is adaptive so that it can operate with a range of video amplitudes and signal distortions.
- The data-slicer uses an adaptive signal recognition and clock-phasing algorithm so that it can operate with a wide range of clock run-in amplitudes.
- The external 55.500MHz overtone-mode crystal has been changed to a 13.875MHz fundamental mode crystal with the specification given below.

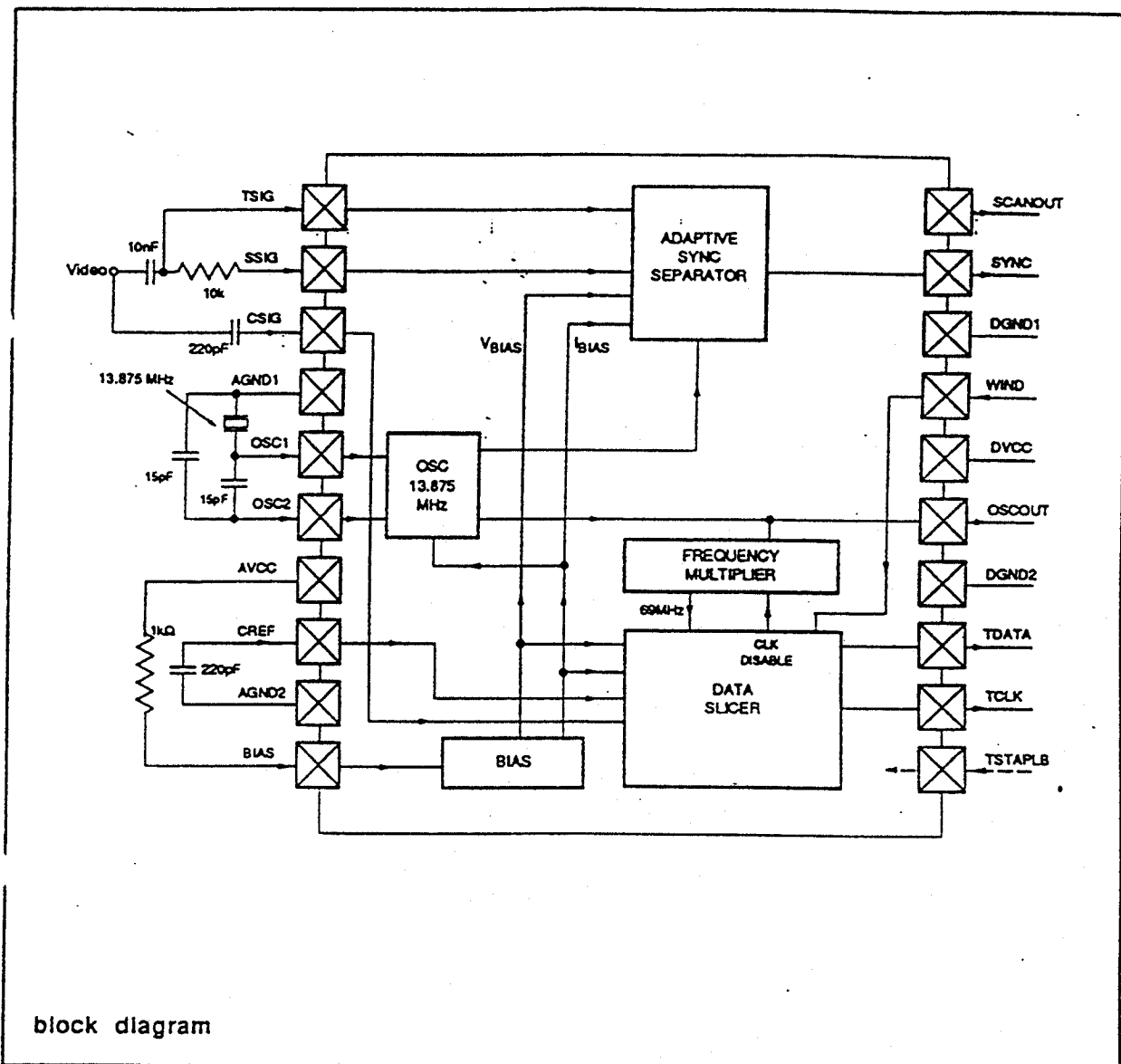
13.875MHZ Crystal Specification

- Oscillation Mode.....	Parallel
- Frequency of Oscillation	13.875MHz
- Maximum Crystal Frequency Tolerance	150ppm (absolute)
- Maximum Crystal ESR (steady-state)	60 Ohms
- Maximum Crystal ESR (start-up)	120 Ohms
- Maximum Shunt Capacitance	7 Pico-F
- Maximum Motional Capacitance	30 Fempto-F
- Maximum PCB/Package Parasitic Capacitance	3 Pico-F
- Crystal Load	18 Pico-F

applications Information



TELETEXT
DATA SLICER
CF72306



<u>Part Number</u>	<u>U/M</u>	<u>Description</u>	<u>Unit Qty</u>
013-263101-72	PCS	FIXED METAL OXIDE FILM RESISTOR	1
013-270005-12	PCS	CARBON FILM RESISTOR 27 OHM 1/16W 5%	1
013-270305-75	PCS	FIXED METAL OXIDE FILM RESISTOR 27 OHM	1
013-270405-75	PCS	FIXED METAL OXIDE FILM RES 27 OHM 2W	1
013-271005-12	PCS	CARBON FILM RESISTOR 270 OHM 1/16W 5%	3
013-271305-75	PCS	FIXED METAL OXIDE FILM RESISTOR 270OHM	1
013-272005-12	PCS	CARBON FILM RESISTOR 2.7K OHM 1/16W 5%	3
013-272205-22	PCS	FLAME PROOF CAR FILM RES KOARDF50ST52	4
013-273005-12	PCS	CARBON FILM RESISTOR 27K OHM 1/16W 5%	8
013-274101-72	PCS	FIXED METAL OXIDE FILM RESISTOR	1
013-302105-12	PCS	CARBON FILM RESISTOR 3K OHM 1/4W 5%	1
013-331005-12	PCS	CARBON FILM RESISTOR 330 OHM 1/16W 5%	5
013-331105-12	PCS	CARBON FILM RESISTOR 330 OHM 1/4W 5%	1
013-332005-12	PCS	CARBON FILM RESISTOR 3.3K OHM 1/16W 5%	12
013-332105-12	PCS	CARBON FILM RESISTOR 3.3K OHM 1/4W 5%	3
013-332605-75	PCS	FIXED METAL OXIDE FILM RESISTOR 3.3K OHM	1
013-333005-12	PCS	CARBON FILM RESISTOR 33K OHM 1/16W 5%	5
013-334305-75	PCS	FIXED METAL OXIDE FILM RESISTOR 330K OHM	1
013-338410-82	PCS	FLAME PROOF FUSING RESISTER 0.33 OHM 2W	1
013-390805-75	PCS	FIXED METAL OXIDE FILM RES 39 OHM 7W	1
013-391005-12	PCS	CARBON FILM RESISTOR 390 OHM 1/16 5%	4
013-391105-12	PCS	CARBON FILM RESISTOR 390 OHM 1/4W 5%	2
013-392005-12	PCS	CARBON FILM RESISTOR 3.9K OHM 1/16W 5%	6
013-393005-12	PCS	CARBON FILM RESISTOR 39K OHM 1/16W 5%	1
013-470205-12	PCS	CARBON FILM RESISTOR 47 OHM 1/2W 5%	1
013-471005-12	PCS	CARBON FILM RESISTOR 470 OHM 1/16W 5%	5
013-471105-12	PCS	CARBON FILM RESISTOR 470 OHM 1/4W 5%	2
013-471205-22	PCS	FLAME PROOF CAR.FILM RES. 470 OHM 1/2W	1
013-472005-12	PCS	CARBON FILM RESISTOR 4.7K OHM 1/16W 5%	2
013-472105-12	PCS	CARBON FILM RESISTOR 4.7K OHM 1/4W 5%	1
013-473005-12	PCS	CARBON FILM RESISTOR 47K OHM 1/16W 5%	18
013-479605-54	PCS	CEMENT RES. 4.7 OHM 5W 5% ERF-5ZXJ4R7	1
013-561005-12	PCS	CARBON FILM RESISTOR 560 OHM 1/16W 5%	5
013-561105-12	PCS	CARBON FILM RESISTOR 560 OHM 1/4W 5%	1
013-562005-12	PCS	CARBON FILM RESISTOR 5.6K OHM 1/16W 5%	10
013-562105-12	PCS	CARBON FILM RESISTOR 5.6K OHM 1/4W 5%	1
013-563005-12	PCS	CARBON FILM RESISTOR 56K OHM 1/16W 5%	4
013-569505-76	PCS	FIXED METAL OXIDE FILM RESISTOR 5.6OHM	1
013-688205-82	PCS	FLAME PROOF FUSING RESISTOR	1
013-688310-82	PCS	FLAME PROOF FUSING RESISTOR	3
013-750005-12	PCS	CARBON FILM RESISTOR 75 OHM 1/16W 5%	3
013-751005-12	PCS	CARBON FILM RESISTOR 750 OHM 1/16W 5%	1
013-820005-12	PCS	CARBON FILM RESISTOR 82 OHM 1/16W 5%	1
013-821005-12	PCS	CARBON FILM RESISTOR 820 OHM 1/16W 5%	4
013-822005-12	PCS	CARBON FILM RESISTOR 8.2K OHM 1/16W 5%	2
013-822105-12	PCS	CARBON FILM RESISTOR 8.2K OHM 1/4W 5%	1
013-822605-75	PCS	FIXED METAL OXIDE FILM RESISTOR 8.2K	1
013-823005-12	PCS	CARBON FILM RESISTOR 82K OHM 1/16W 5%	3
013-825305-92	PCS	HIGH VOLTAGE RESISTOR 8.2M OHM 1W 5%	1
014-210200-01	PCS	P.T.C. THERMISTOR "POSI-R" ZPB53BL200C	1

<u>Part Number</u>	<u>U/M</u>	<u>Description</u>	<u>Unit Qty</u>
022-300101-03	PCS	TRIMMER CAPACITOR 30PF ECR-HA030E11 MAT	1
026-102111-01V	PCS	MYLAR CAP. 0.001MFD 100V 10% (TAPING)	1
026-103071-11	PCS	POLY. FILM CAP ECQ-B1H103KF 0.01MFD	1
026-103071-11V	PCS	POLY FILM CAP ECQ-B1H103KF3 0.01MFD	1
026-104061-71	PCS	MULTILAYER METALLIZED POLYESTER FILM CAP	3
026-104111-01	PCS	MYLAR CAPACITOR .1MFD 100V 10%	2
026-122071-11V	PCS	POLY FILM CAP ECQ-B1H122KF3 0.0012MFD	1
026-153111-01V	PCS	MYLAR CAPACITOR .015MFD 100V 10%	1
026-154111-01	PCS	MYLAR CAPACITOR 0.15 MFD 100V 10%	1
026-222111-01V	PCS	MYLAR CAP 0.0022MFD 100V 10% (TAPING)	2
026-223071-11V	PCS	POLY FILM CAP ECQ-B1H223KF3 0.022MFD	1
026-223111-01V	PCS	MYLAR CAP 0.022MFD 100V 10% (TAPING)	1
026-224111-01	PCS	MYLAR CAPACITOR 0.22 MFD 100V 10%	1
026-273071-11V	PCS	POLY FILM CAP ECQ-B1H273KF3 0.027MFD	1
026-332160-41	PCS	METALLIZED POLYPROPYLENE CAP 0.0033 MFD	1
026-333111-01V	PCS	MYLAR CAP 0.033MFD 100V 10% (TAPING)	1
026-472111-01	PCS	MYLAR CAPACITOR 0.0047 MFD 100V 10%	1
026-473201-31	PCS	POLYPROPYLENE CAPACITOR .047MFD 200V 10	2
026-473212-41	PCS	METALLIZED POLY CAP ECQU2A473MN 0.047MFD	1
026-474111-01	PCS	MYLAR CAPACITOR 0.47MFD 100V 10%	1
026-474200-31	PCS	POLYPROPYLENE CAPACITOR 0.47 MFD 200V 5%	1
026-474211-21C	PCS	MET. POLY. CAP. 0.47UF 250V AC +/-10%	1
026-562071-11V	PCS	POLY FILM CAP ECQ-B1H562KF3 0.0056MFD	1
026-563201-31	PCS	POLYPROPYLENE CAP 0.056MFD 200V 10%	1
026-682111-01V	PCS	MYLAR CAPACITOR 0.0068 MFD 100V 10%	1
030-212638-00	PCS	AFC DIODE IS2638 HITACHI	1
030-512110-00	PCS	LED 'RED' SEL2110R	1
031-211015-00V	PCS	TRANSISTOR 2SA1015 TOSHIBA (RADIAL LEAD)	1
031-220774-20V	PCS	TRANSISTOR 2SB774(TA)MATSUSHITA	1
031-230388-00V	PCS	TRANSISTOR 2SC388ATM TOSHIBA	1
031-231815-26	PCS	TRANSISTOR 2SC 1815-T TOSHIBA	1
031-231815-26V	PCS	TRANSISTOR 2SC1815-Y TOSHIBA	21
031-241545-00	PCS	TRANSISTOR 2SD1545 TOSHIBA	1
031-241555-05	PCS	TRANSISTOR 2SD1555(E) TOSHIBA	1
031-380020-00	PCS	TRANSISTOR BSX20 S.G.S.	1
033-068230-22	PCS	I.C. C68230Y-N2B TEXAS (TMS73C47) KWTC	1
033-070095-22	PCS	I.C. CF70095A TEXAS	1
033-072306-22	PCS	I.C. CF72306 TEXAS	1
033-105601-11	PCS	IC AN5601K MATSUSHITA	1
033-108701-14	PCS	I.C. TA8701AN TOSHIBA	1
033-201904-31	PCS	IC TDA1904 S.G.S	1
033-207830-10	PCS	IC LA7830 SANYO	1
033-809012-14	PCS	IC TC9012F TOSHIBA	1
033-809346-42	PCS	I.C. XLS93LC46AP EXEL	1
036-600781-00	PCS	INFRARED LIGHT DETECTING UNIT FOR REMOTE	1
037-138750-30A	PCS	CRYSTAL 13.875MHZ NDK	1
037-886724-20	PCS	CRYSTAL 8.867238MHZ KDO284FFB DAIWA	1
045-022411-11	PCS	SLIDE SWITCH 2P2T SS22F12G11 PIC	1
046-100001-14A	PCS	POWER SWITCH ESB99957A MATSUSHITA	1
046-100001-39	PCS	TACT SWITCH 1P SKHHLQ044A ALPS	9

<u>Part Number</u>	<u>U/M</u>	<u>Description</u>	<u>Unit Qty</u>
127-106047-01	PCS	ELECTROLYTIC CAPACITOR 10MFD 16V 20%	1
127-106047-01V	PCS	ELECTROLYTIC CAP 10MFD 16V 20%	3
127-106047-21V	PCS	NON-POLARIZED ELECTROLYTIC CAP 10MFD	1
127-106077-01V	PCS	ELECTROLYTIC CAP 10MFD 50V 20%	1
127-106215-81	PCS	ELECTROLYTIC CAPACITOR 10MFD 250V +-20%	1
127-107047-01	PCS	ELECTROLYTIC CAPACITOR 100MFD 16V 20%	1
127-107047-01V	PCS	ELECTROLYTIC CAP 100MFD 16V 20%	5
127-107067-01V	PCS	ELECTROLYTIC CAP 100MFD 35V 20%	1
127-107135-81	PCS	ELECTROLYTIC CAPACITOR 100 MFD 160V	2
127-107401-01	PCS	ELECT COND 100MFD 400V ECES2GU101G 10%	1
127-108047-01	PCS	E. CAP 1000MFD 16V 20% 10 X 21MM	2
127-108057-01	PCS	ELECTROLYTIC CAPACITOR 1000MFD 25V 20%	2
127-108067-01	PCS	ELECTROLYTIC CAPACITOR 1000MFD 35V 20%	1
127-224077-01V	PCS	ELECTROLYTIC CAP 0.22 MFD 50V 20%	1
127-335077-01V	PCS	ELECTROLYTIC CAP 3.3MFD 50V 20%	5
127-335077-21V	PCS	NON POLARIZED ELECTROLYTIC CAP 3.3MFD	1
127-335215-01	PCS	ELECTROLYTIC CAPACITOR 3.3MFD 250V+-20%	1
127-338047-01	PCS	ELECTROLYTIC CAPACITOR 3300 MFD 16V 20%	1
127-474077-01V	PCS	ELECTROLYTIC CAP 0.47MFD 50V 20%	1
127-475057-01V	PCS	ELECTROLYTIC CAP 4.7MFD 25V 20%	7
127-476047-01	PCS	ELECTROLYTIC CAPACITOR 47 MFD 16V 20%	2
127-476047-01V	PCS	ELECTROLYTIC CAP 47MFD 16V 20%	5
127-476057-01V	PCS	ELECTROLYTIC CAP 47MFD 25V 20%	2
127-476077-01V	PCS	ELECTROLYTIC CAP 47MFD 50V 20%	2
127-477047-01	PCS	ELECTROLYTIC CAPACITOR 470MFD 16V 20%	1
127-477057-01	PCS	ELECTROLYTIC CAPACITOR 470 MFD 25V 20%	1
130-134148-01	PCS	SILICON DIODE 1N4148 AXIAL MOUNT	17
130-310060-00	PCS	RECTIFIER D2SBA S60 6B	1
130-310858-01	PCS	DIODE MA858 MATSUSHITA (TAPE TYPE)	3
130-315295-00	PCS	RECTIFIER DIODE S5295G/J BYT 52K/J/G	10
130-410033-00	PCS	ZENER DIODE KA33V SAM SUNG	1
130-410039-00	PCS	ZENER DIODE 3.9V	2
130-410051-01	PCS	ZENER DIODE 5.1V	1
130-410056-01	PCS	ZENER DIODE 5.6V AXIAL MOUNT	2
130-410082-01	PCS	ZENER DIODE 8.2V	1
130-411091-00	PCS	ZENER DIODE 9.1V MA1091-M MATSUSHITA	3
130-422120-00	PCS	ZENER DIODE 12V MA2120 MATSUSHITA	1
130-600101-00	PCS	INFRARED EMITTING DIODE EL-1L1	1
200-A12001-02	PCS	CAB FRONT BLK W/CHAR GREY SPRAY	1
201-000901-01S	PCS	CABINET TOP BLACK ABS	1
202-A12001-01	PCS	CAB BACK BLK HI-PS BS MATL	1
203-000901-01S	PCS	CABINET BOTTOM BLACK ABS	1
210-000901-01	PCS	BATTERY COVER BLACK ABS	1
219-A12001-02	PCS	F.PANEL DOOR BLK W/CHAR GREY SPRAY	1
239-391201-01	PCS	ADAPTOR FOR POWER SWITCH BLACK ABS	1
250-932001-01	PCS	LED HOLDER BLACK ABS	1
254-691301-01	PCS	TWIST HOLDER	1
259-911501-01	PCS	DEGAUSSING COIL CLIP	2
259-922002-01	PCS	DEGAUSSING COIL CLIP	2
259-922101-01	PCS	PCB SUPPORTER	1

<u>Part Number</u>	<u>U/M</u>	<u>Description</u>	<u>Unit Qty</u>
263-000901-01	PCS	FRONT LENS RED 20784 PC	1
263-A12001-01	PCS	FRONT LENS RED ABS W/SILK SCREEN	1
292-A12001-01	PCS	POWER KNOB BLACK ABS	1
300-A12001-02	PCS	POLYFOAM END CAPS W/PS 06'	1
310-051004-10	PCS	POLYBAG 5"X10"X0.04MM THK P.O.	1
310-111404-12B	PCS	POLYBAG 11 X 14" 0.04MM THK P.O.	1
310-359504-10B	PCS	POLYBAG 3.5" X 9.5" X 0.04MM THK P.O.	1
310-396005-40B	RLS	EXPANDED POLYETHYLENE FOAM PAPER	0.0030
334-391501-01	PCS	RUBBER RING (T=3.0MM)	4
381-911501-01	PCS	AV-IN COVER	1
403-A12001-01	PCS	SPEAKER GRILLEW/DULL BLK SPRAY	1
411-000903-03	PCS	N/P ALBA 32 KEYS F.R.C. W/O AV/TV	1
411-922001-11	PCS	NAME PLATE ALBA	1
412-A12001-03	PCS	M/P ALBA CTV4855 ENG 240V W/UK SYSTEM	1
418-922040-01	PCS	TUNER COVER W/SILK'S	1
418-A12006-01	PCS	PRESET OVERLAY F.R 9HOLES W/O TV/AV	1
428-A22001-01	PCS	CRT MTG BKT	4
450-371602-01	PCS	TEST PIN	2
450-691301-01	PCS	TEST PIN	13
450-701201-01	PCS	SOLDERING LUG (10015-5)	2
466-701201-01	PCS	FUSE HOLDER	2
477-371601-01	PCS	CRT SPRING	1
477-390203-01	PCS	CONTACT SPRING WIRE +, - VE	1
477-390501-01	PCS	CONTACT SPRING WIRE + VE	1
477-390502-01	PCS	CONTACT SPRING WIRE - VE	1
477-921501-01	PCS	COMPRESSION SPRING	1
483-922001-01	PCS	SHIELD BOX BODY	1
484-382810-01	PCS	HEAT SINK 2.0MM THK ALUMINIUM	1
484-922003-01	PCS	HEAT SINK	1
506-911501-01	PCS	WOOD PALLET 1270(L) X 760(W) X 138(H)	0.0069
510-A12001-03	PCS	G/B ALBA CTV4855 ENG W/UK MK & HANDLE	1
511-000901-01	PCS	PACKING CARTON	0.0050
512-000901-01	PCS	FITTING PAPER	0.0200
512-000902-01	PCS	FITTING PAPER	0.0200
512-911501-01	PCS	CORRUGATED BOARD W/HOLES	0.3000
512-911502-01	PCS	CARTON SLEEVE 3 SLOT 740 (MM) X 105 (MM)	0.7500
512-911504-01	PCS	CARTON SLEEVE 3 SLOT 616(MM) X 105(MM)	0.7500
521-200095-00	PCS	FELT PAPER 200 X 9 X 0.5MM THK W/DOUBLE	2
531-150010-05	PCS	FELT PAPER 150 X 10 X 0.5MM THK	1
569-018101-14	PCS	QUALITY APPROVED LABEL	1
569-330201-01	PCS	QC PASSED LABEL WHITE B/G BLUE LETT	1
569-370601-10	PCS	TV SYSTEM LABEL (PAL I)	1
569-371401-26	PCS	CRT X-RAY APPROVED LABEL ENGLISH/GERM	2
569-382801-12	PCS	QC PASSED LABEL BLUE B/G WHITE LETT	1
569-391501-38	PCS	AC LINE CORD LABEL (3A)	1
569-691301-13	PCS	DATE CODE LABEL 2CM X 1.5CM	2
569-921501-12	PCS	'CAUTION HIGH TENSION' LABEL	1
569-922001-27	PCS	MANUAL HANDING MARK LABEL (20.2KG)	2
569-A12001-01	PCS	BAR CODE LABEL FOR ALBA (5016870042079)	2
570-A12002-02	PCS	I/B ALBA CTV4855 ENG 240V W/SCART	1