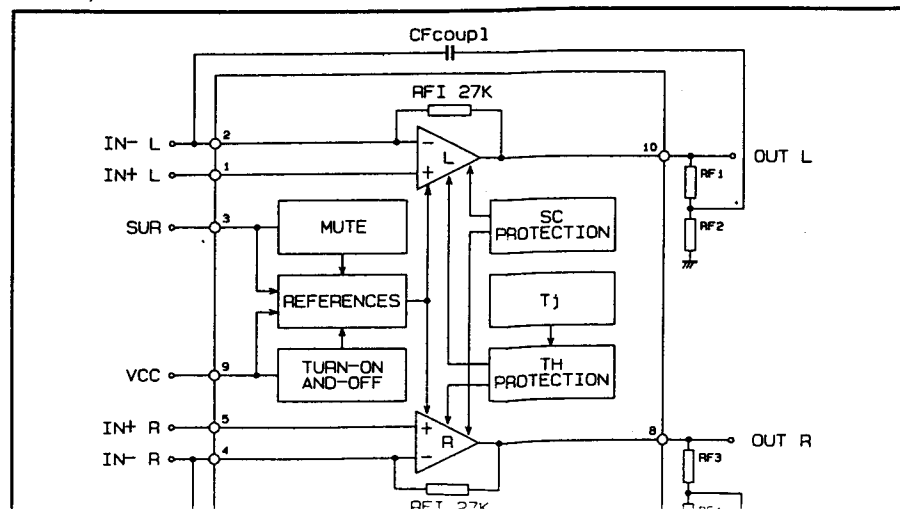
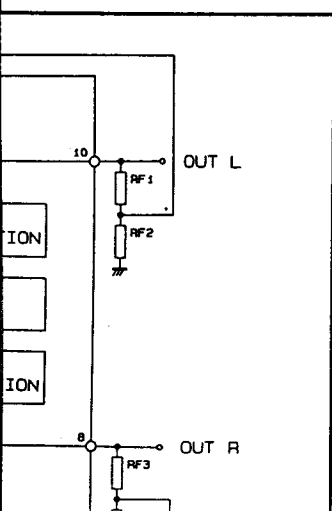
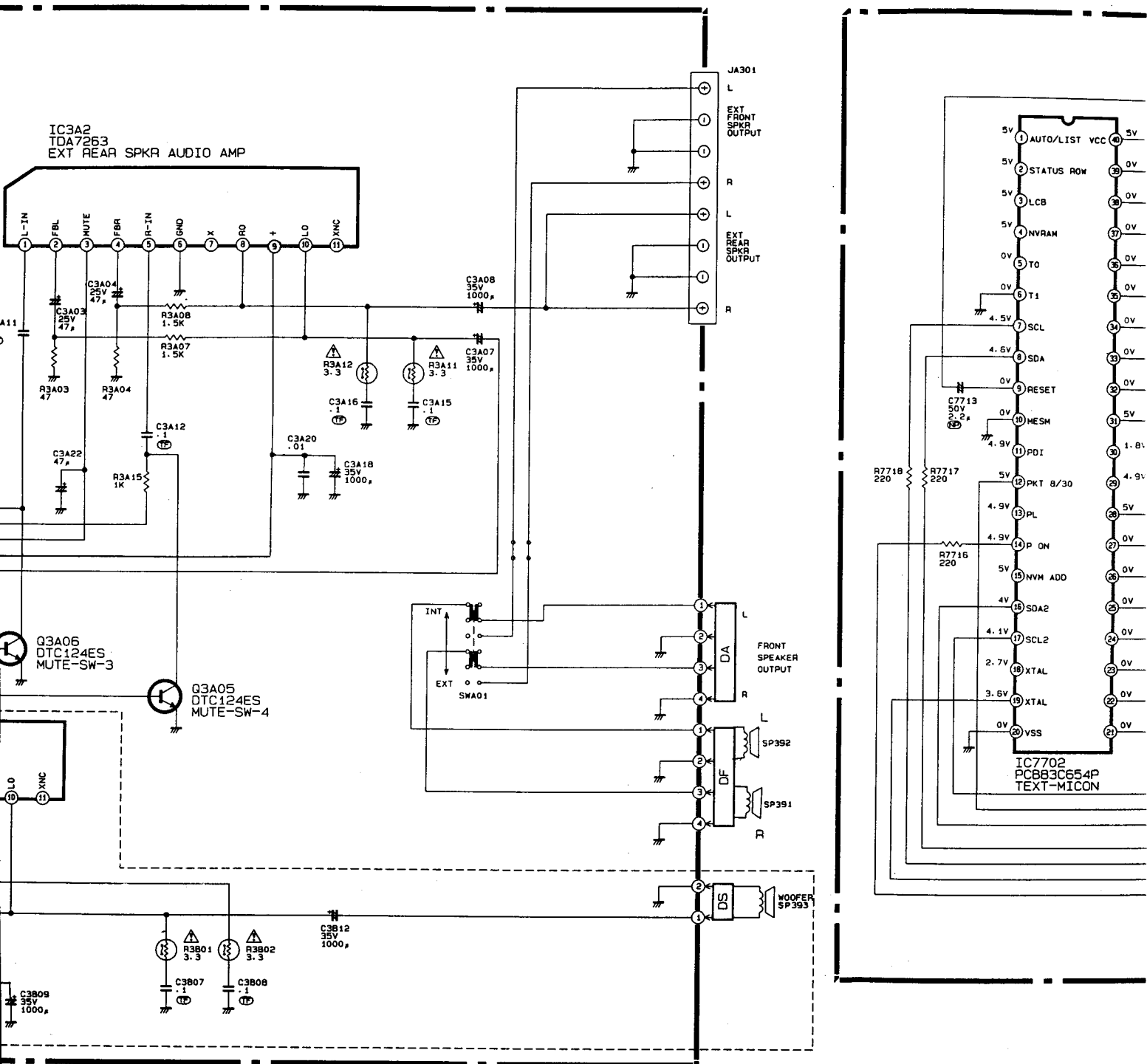
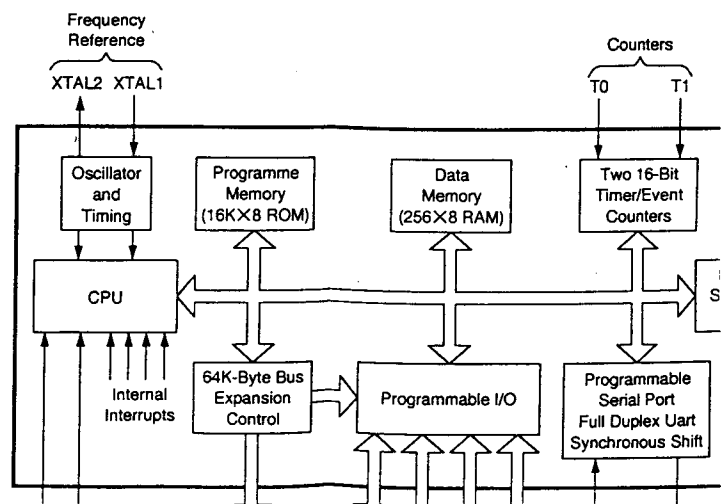


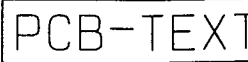
IC3A2,3B1 TDA7263



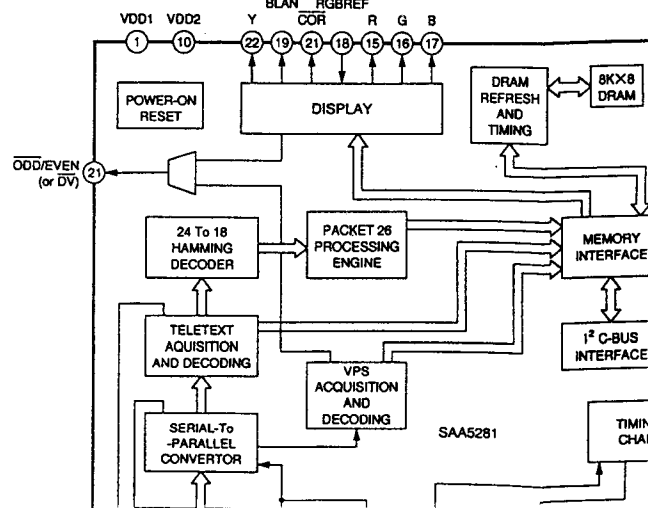


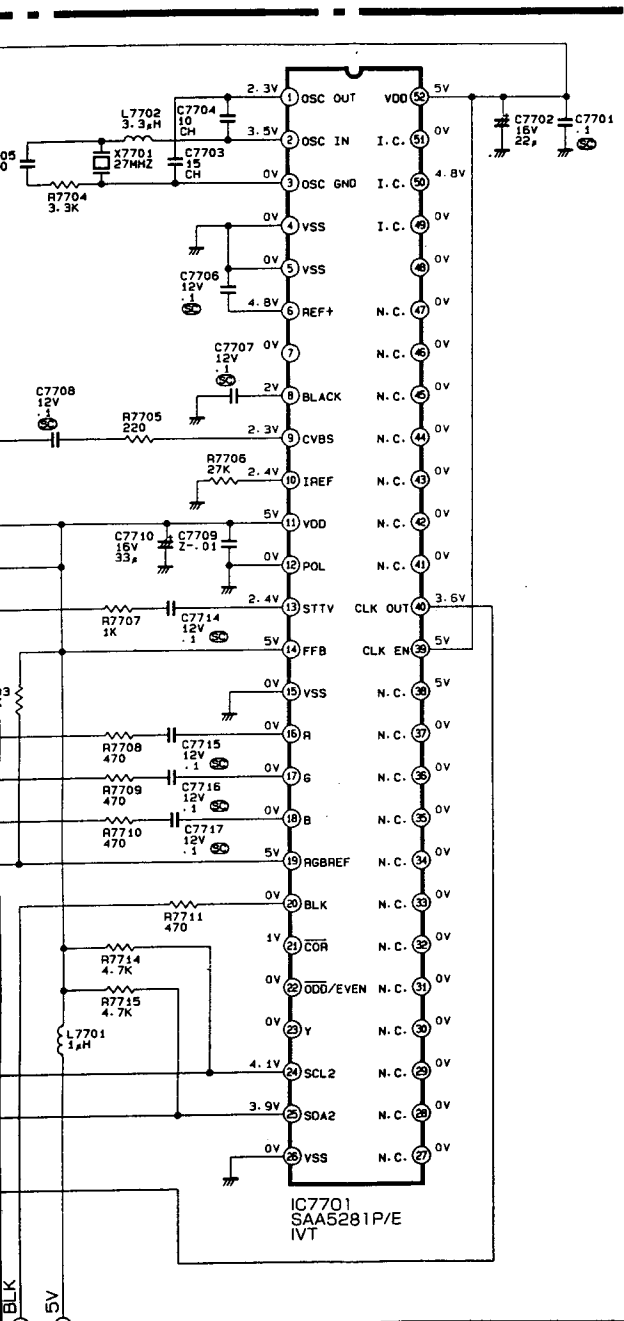
IC7702 PCB83C654P





IC7701 SAA5281ZP/E





PCB-TEXT

PCB-VIDEOCRYPT

VideoCrypt Decoder

The VideoCrypt decoder PCB is only serviceable by Mitsubishi service department.

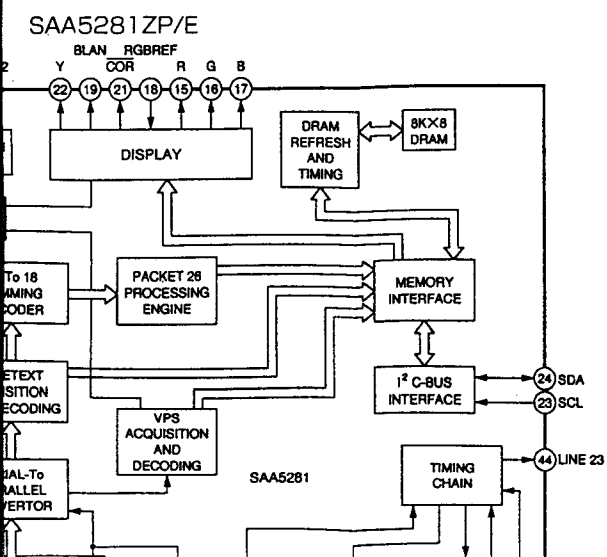
In the event of a fault on this PCB, please follow this procedure:

1. Contact the Mitsubishi consumer spares department to request an advance replacement VideoCrypt decoder PCB.
2. Upon receipt of the replacement PCB, complete the enclosed form and return it with the faulty PCB, in the packaging provided.

Failure to return the PCB within 30 days will incur full replacement PCB costs.

NOTE

The plastic PCB frame, connecting lead and fixing screw should be retained as the replacement PCB is supplied *without* these items.



E

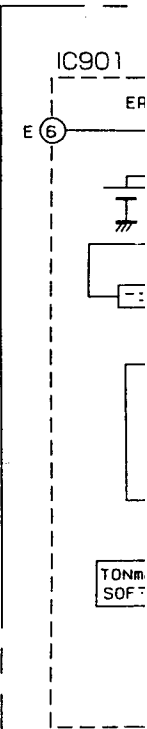
F

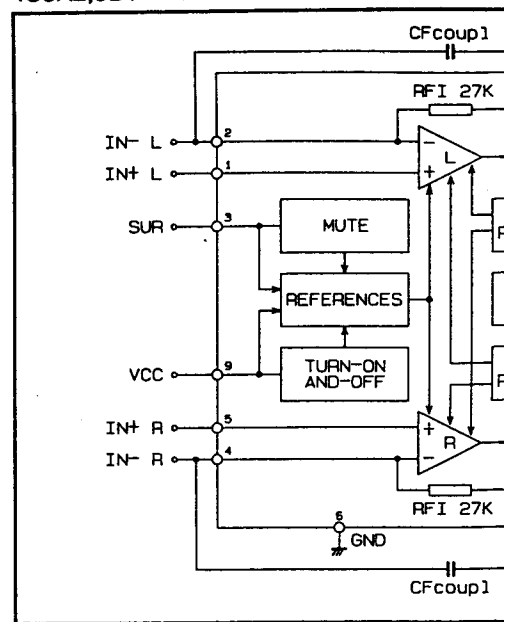
G

H

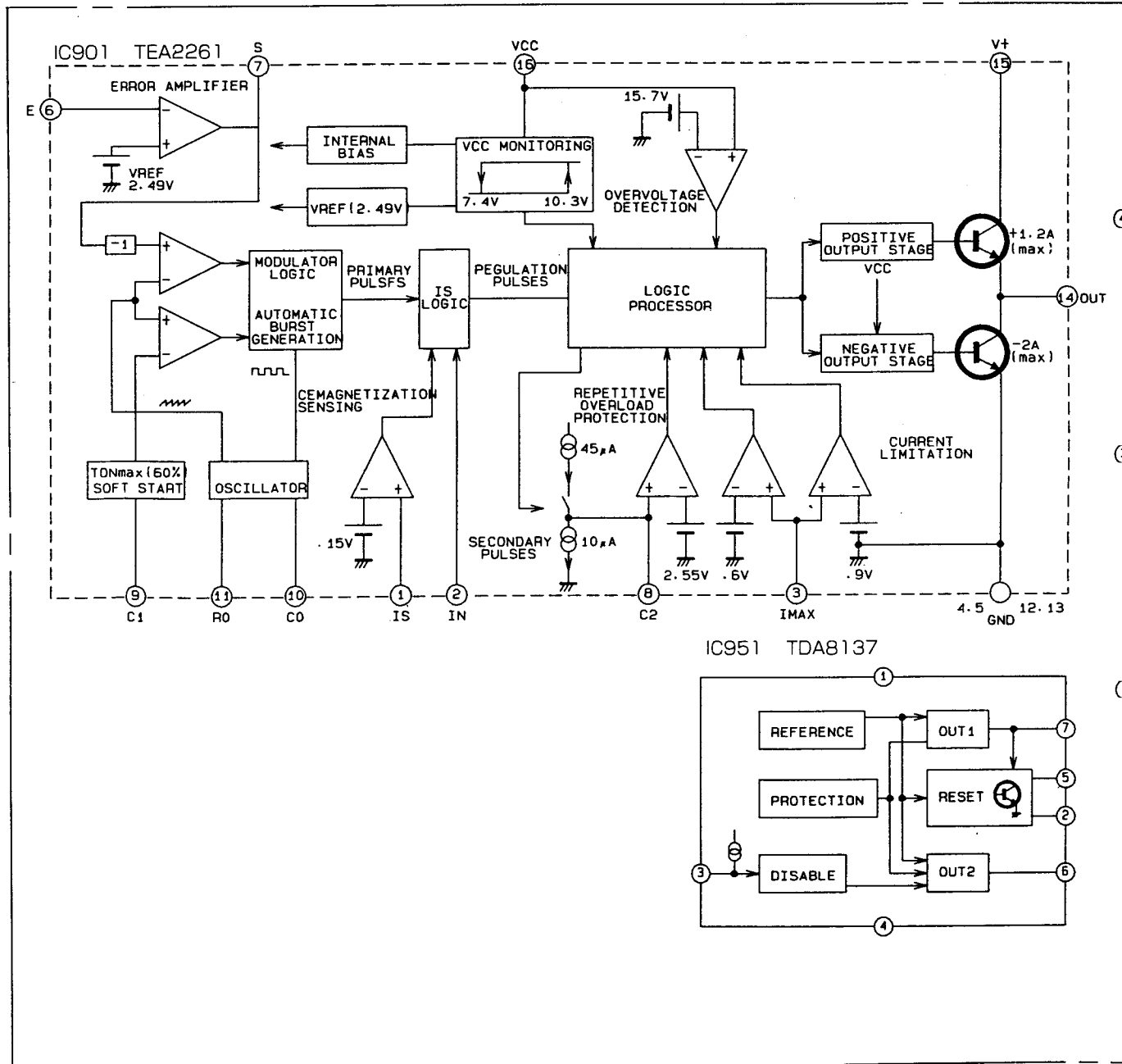
I

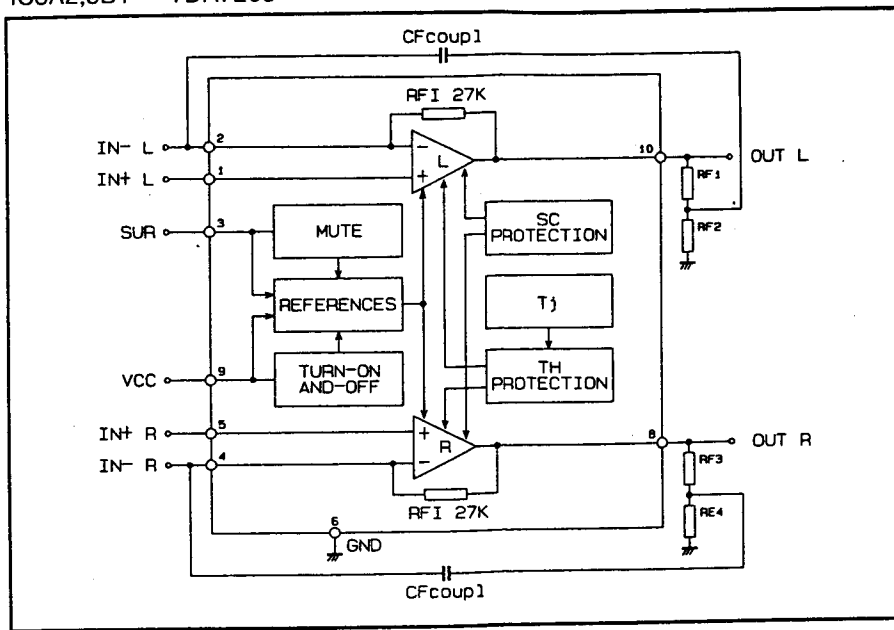
J



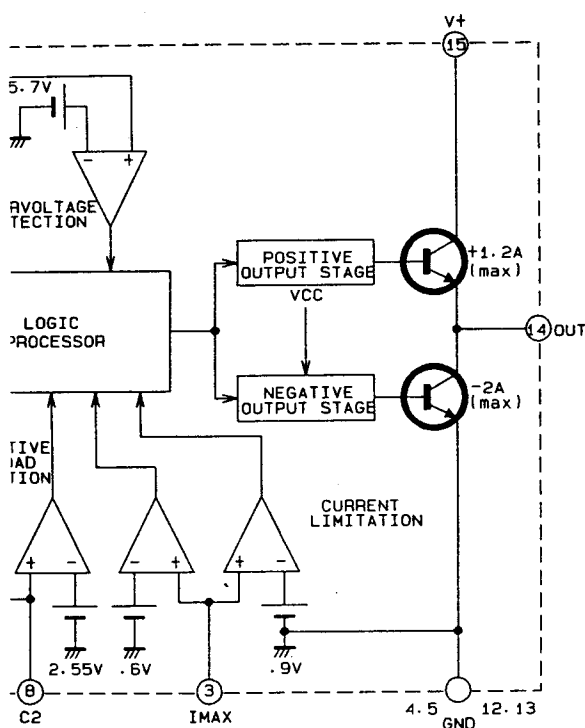


< IC block diagrams of PCB-MIAN and CRT

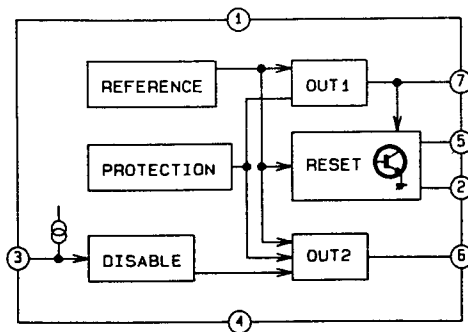




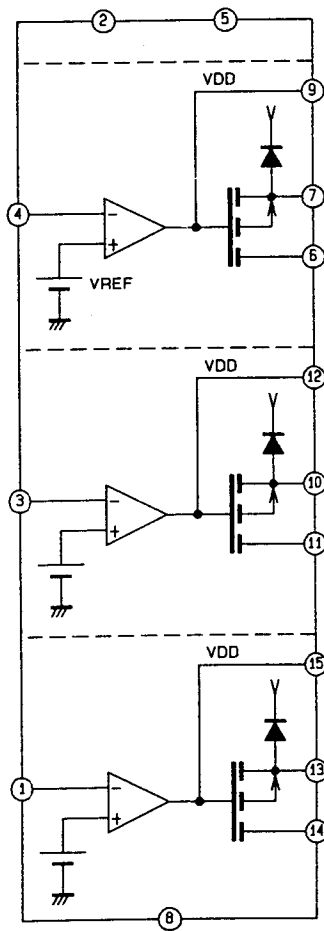
PCB-MIAN and CRT >



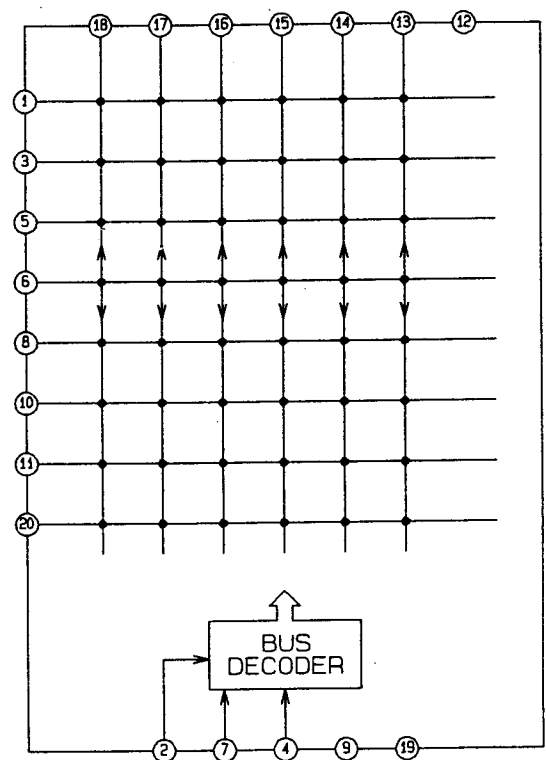
IC951 TDA8137



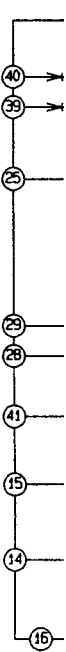
IC660 TEA5101

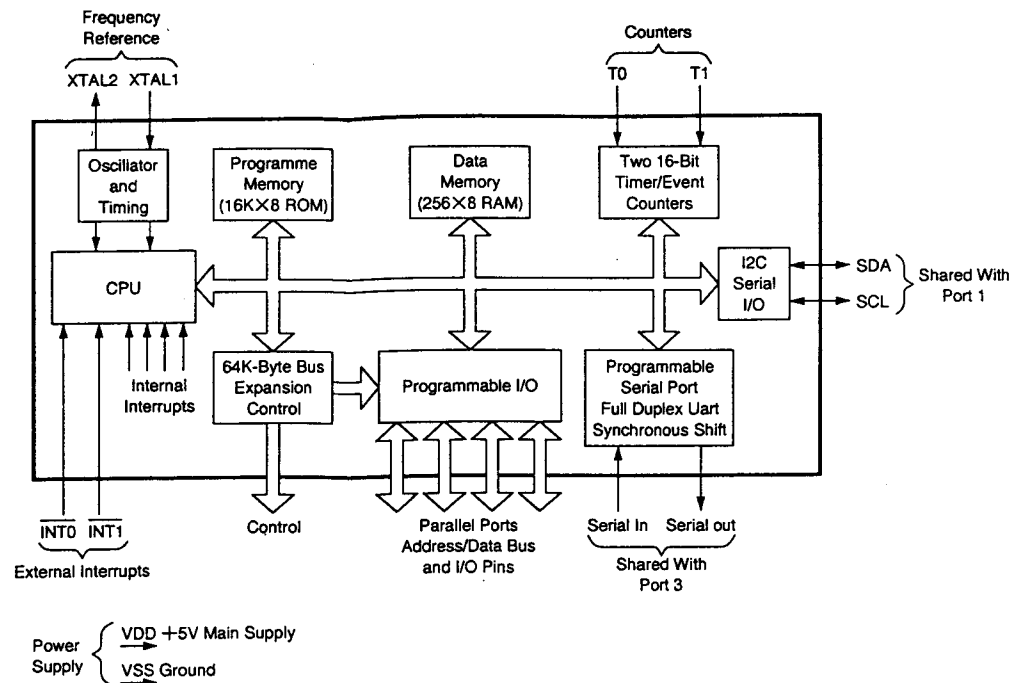


IC202 TEA6415C

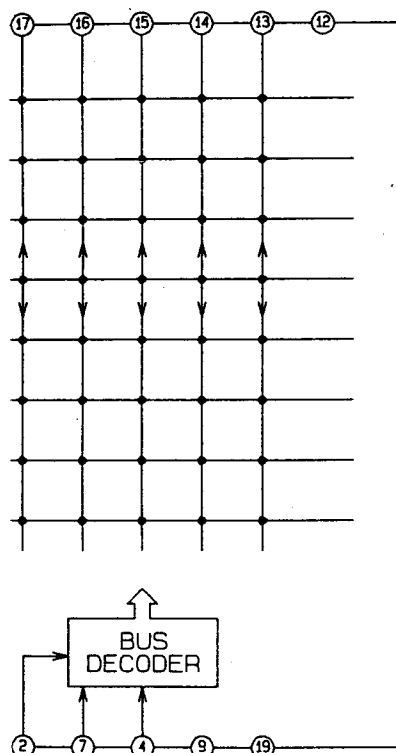


IC202

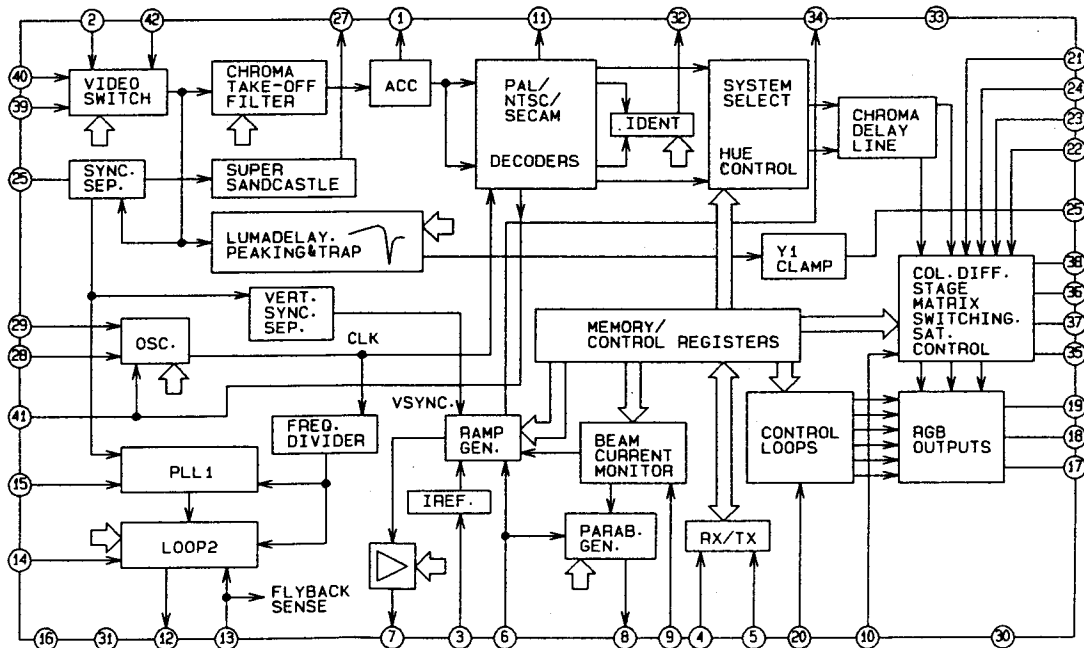




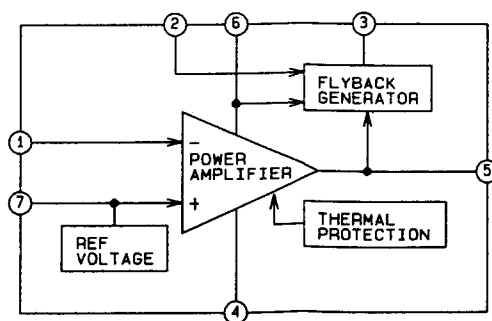
EA6415C



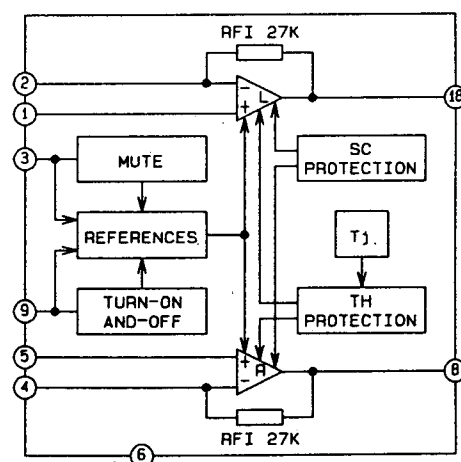
IC201 MC44031

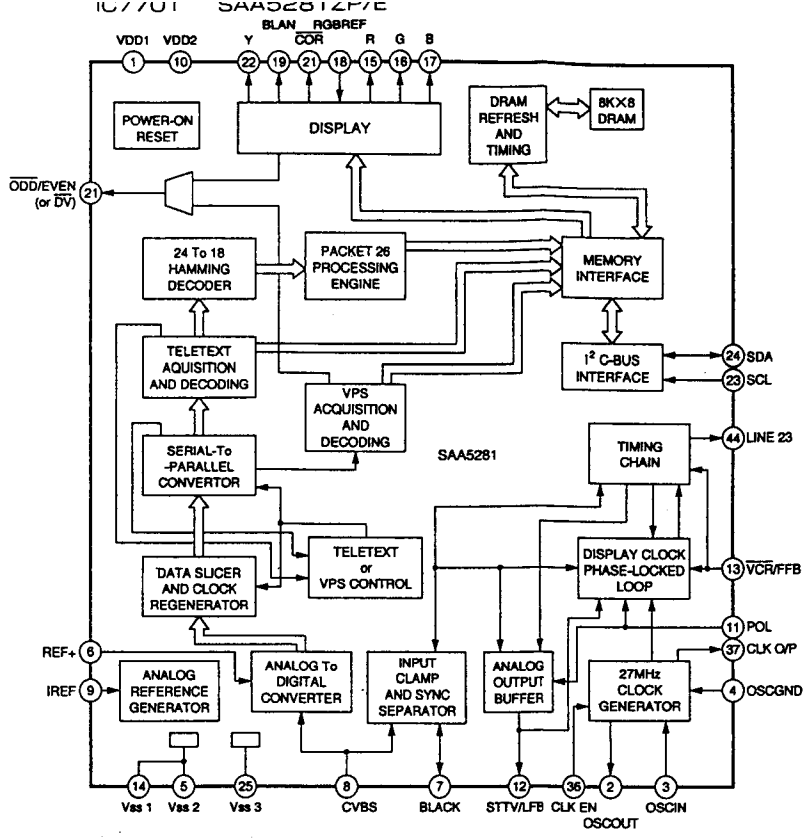
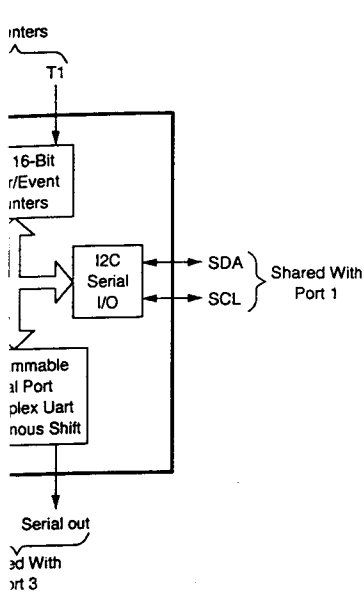


IC401 TDA8171



IC351 TDA7263





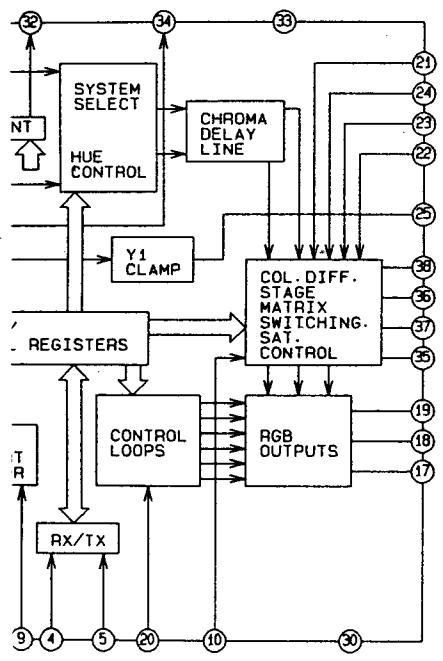
The VideoCrypt decoder department.

In the event of a fault o

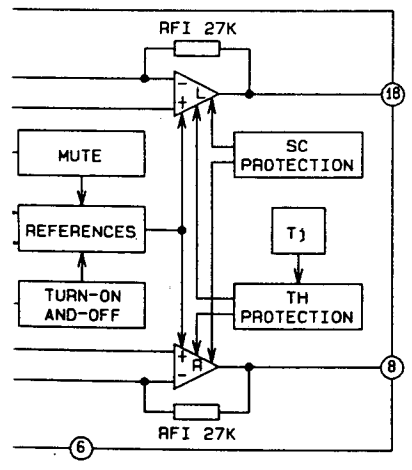
1. Contact the Mitsubishi advance replacem
2. Upon receipt of the r and return it with th

Failure to return the PC PCB costs.

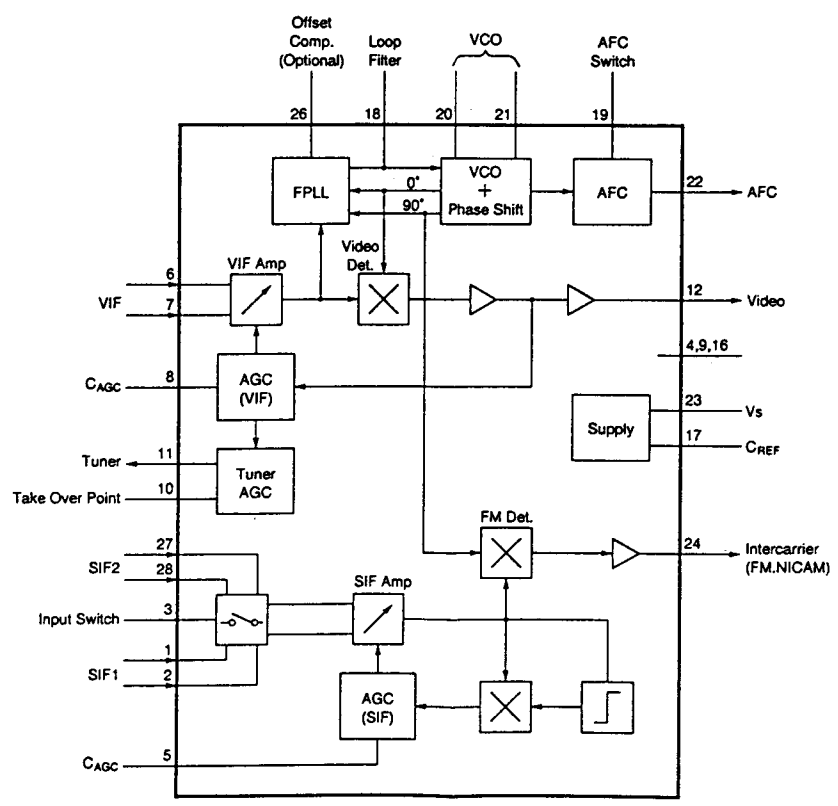
NOTE
The plastic PCB frame, be retained as the repla items.

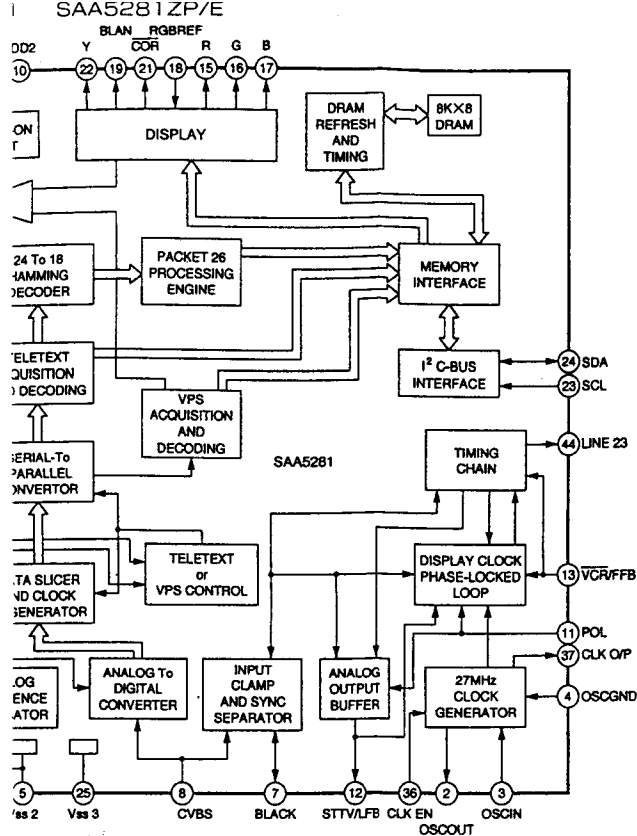


51 TDA7263



IC101 TDA4472-A





The VideoCrypt decoder PCB is only serviceable by Mitsubishi service department.

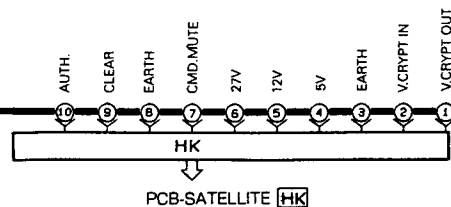
In the event of a fault on this PCB, please follow this procedure:

1. Contact the Mitsubishi consumer spares department to request an advance replacement VideoCrypt decoder PCB.
2. Upon receipt of the replacement PCB, complete the enclosed form and return it with the faulty PCB, in the packaging provided.

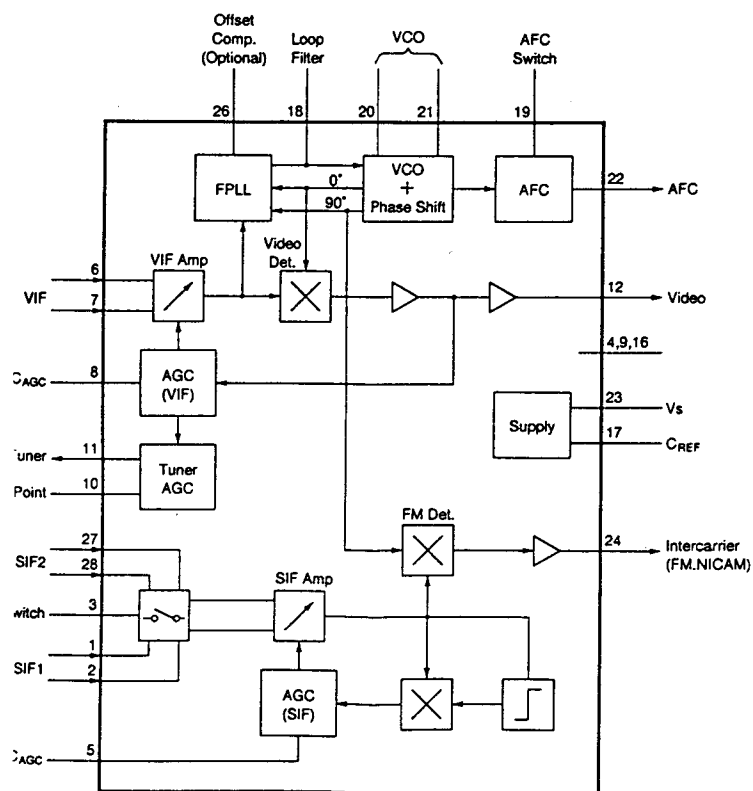
Failure to return the PCB within 30 days will incur full replacement PCB costs.

NOTE

The plastic PCB frame, connecting lead and fixing screw should be retained as the replacement PCB is supplied *without* these items.



IC101 TDA4472-A



CT-25AV1BD
CT-25AV1LD
CT-25AV1BDS
CT-28AV1BD
CT-28AV1LD
CT-28AV1BDS