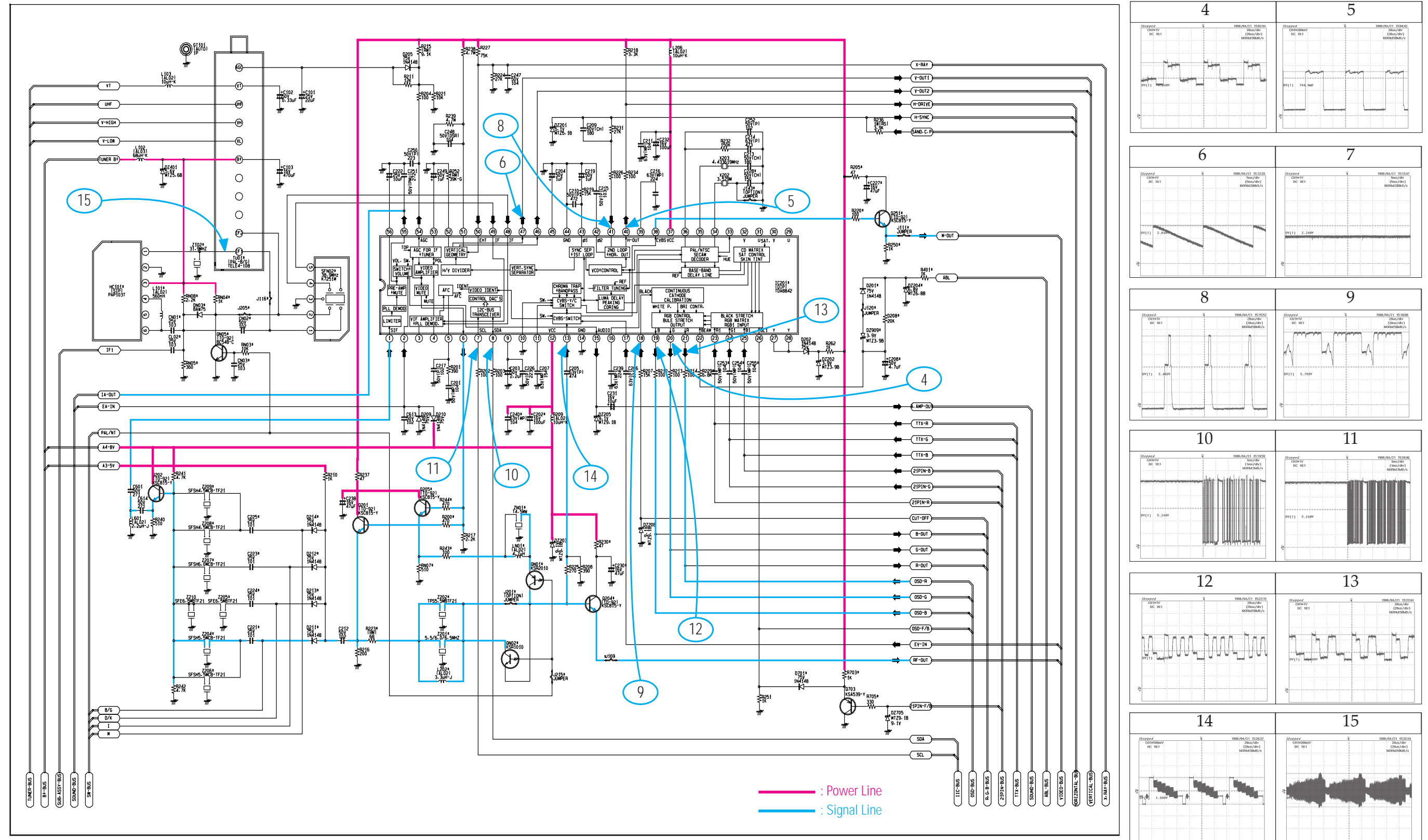
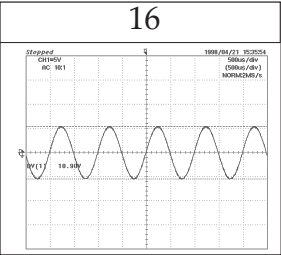
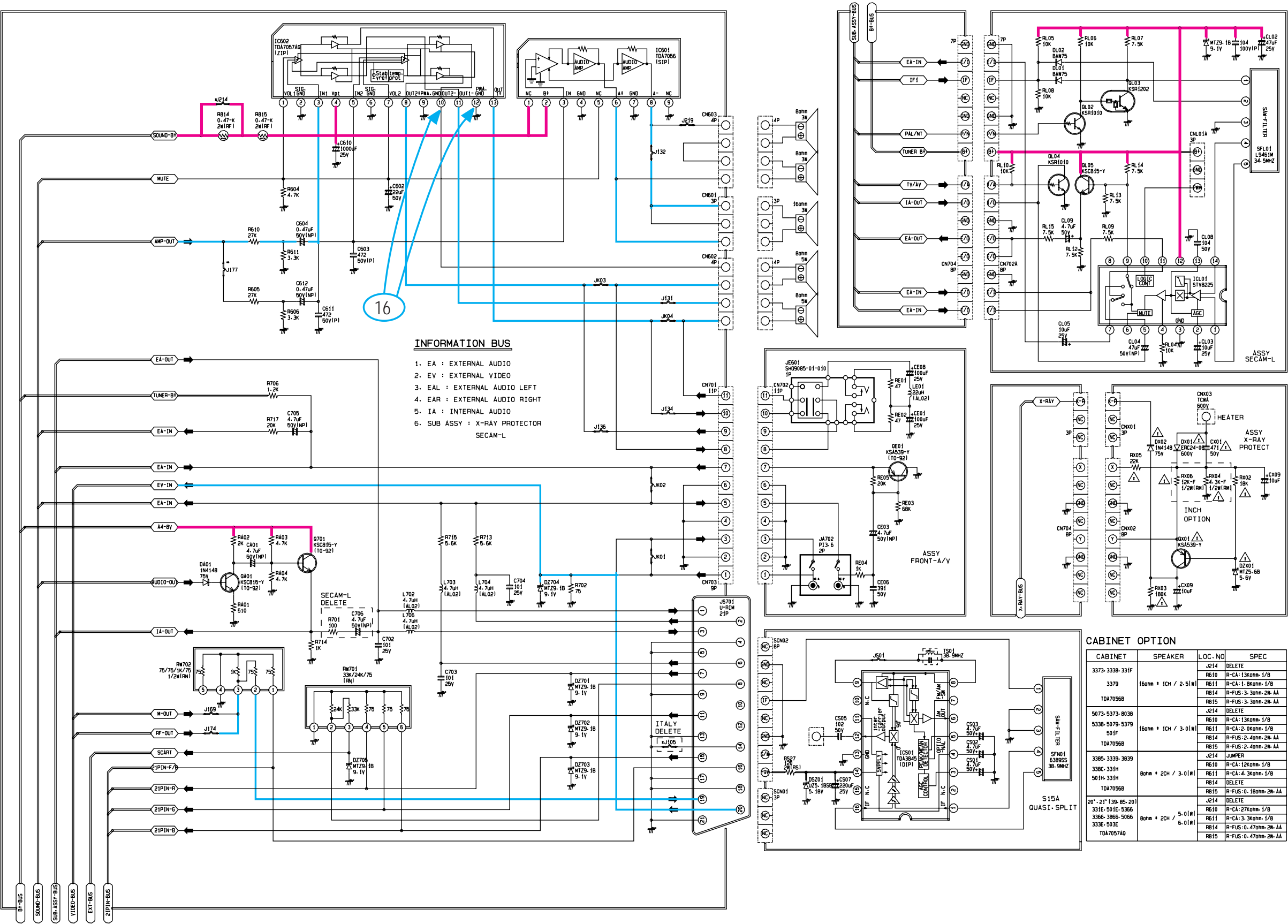


11. Schematic Diagrams

11-1 ONECHIP



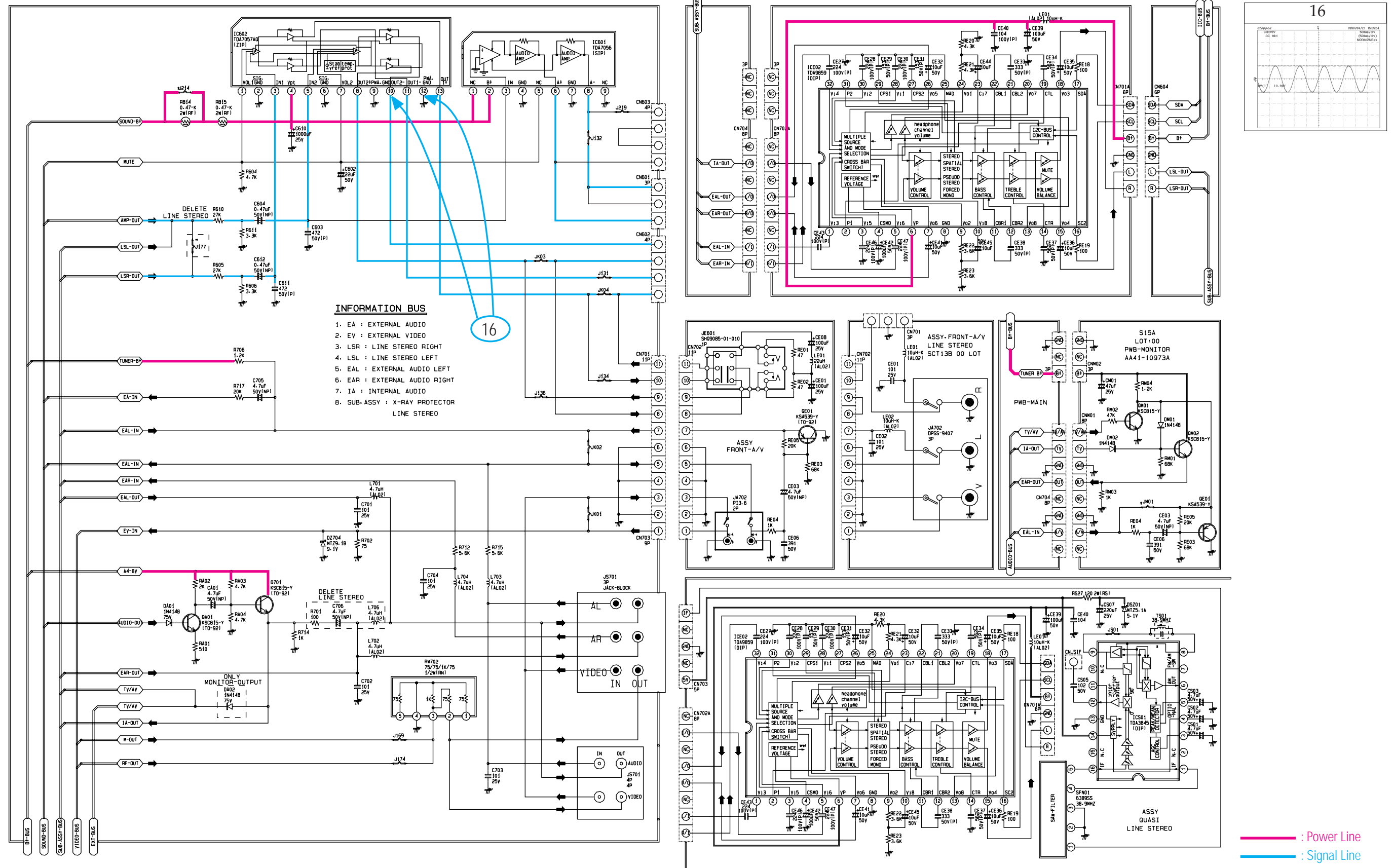
11-2 SOUND, EXT-A/V (Europe/Africa)

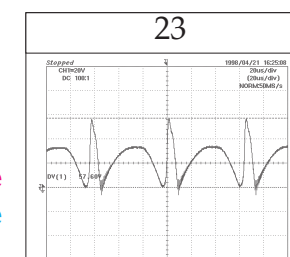


CABINET	SPEAKER	LOC. NO	SPEC
3373-3338-331F		J214	DELETE
		R610	R-CA: 1.3k Ω 1/8
3379	16 Ω m + 1CH / 2.5W	R611	R-CA: 1.8k Ω 1/8
		R614	R-FUS: 3.3 Ω m-2W-AA
TD7056B		R615	R-FUS: 3.3 Ω m-2W-AA
5073-5373-8038		J214	DELETE
5338-5079-5379		R610	R-CA: 1.3k Ω 1/8
501F	16 Ω m + 1CH / 3.0W	R611	R-CA: 2.0k Ω 1/8
TD7056B		R614	R-FUS: 2.4 Ω m-2W-AA
		R615	R-FUS: 2.4 Ω m-2W-AA
3385-3339-3839		J214	JUMPER
3385-331H		R610	R-CA: 1.2k Ω 1/8
501H-331H	Bona + 2CH / 3.0W	R611	R-CA: 4.3k Ω 1/8
TD7056B		R614	DELETE
		R615	R-FUS: 0.18 Ω m-2W-AA
20"-21" (39-85-20)		J214	DELETE
331E-501E-5366		R610	R-CA: 2.7k Ω 1/8
3366-3866-5066	Bona + 2CH / 5.0W	R611	R-CA: 3.3k Ω 1/8
333E-503E		R614	R-FUS: 0.47 Ω m-2W-AA
TD7057AD		R615	R-FUS: 0.47 Ω m-2W-AA

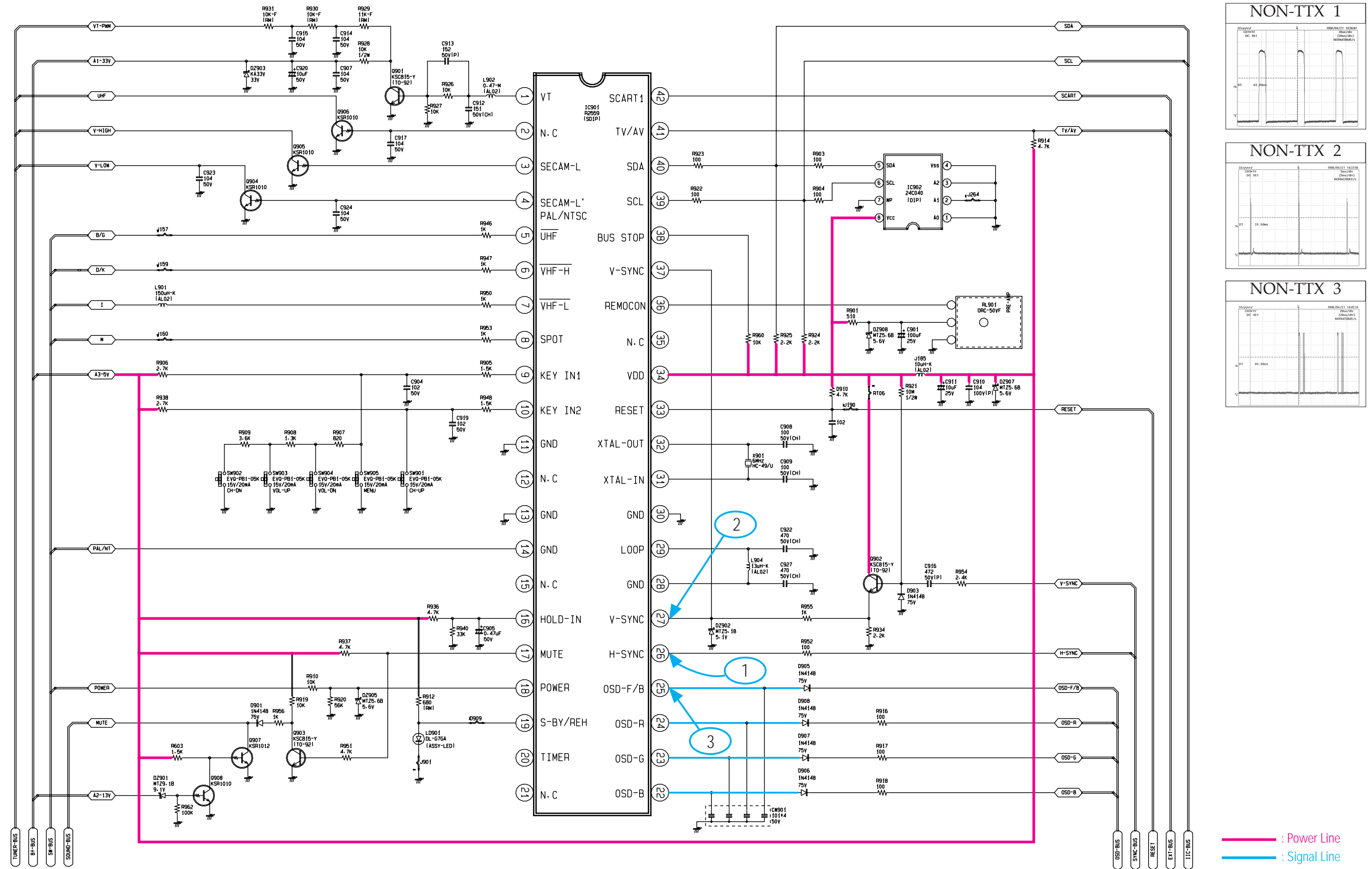
Power Line
Signal Line

11-3 SOUND, EXT-A/V (Middle East / Asia)

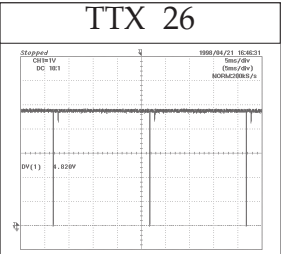
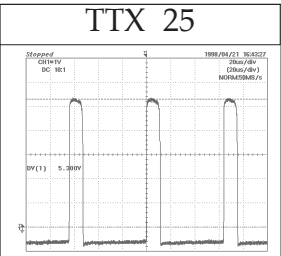
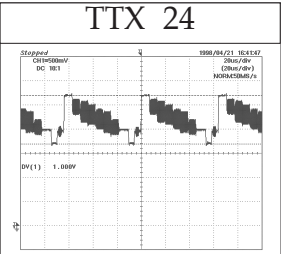
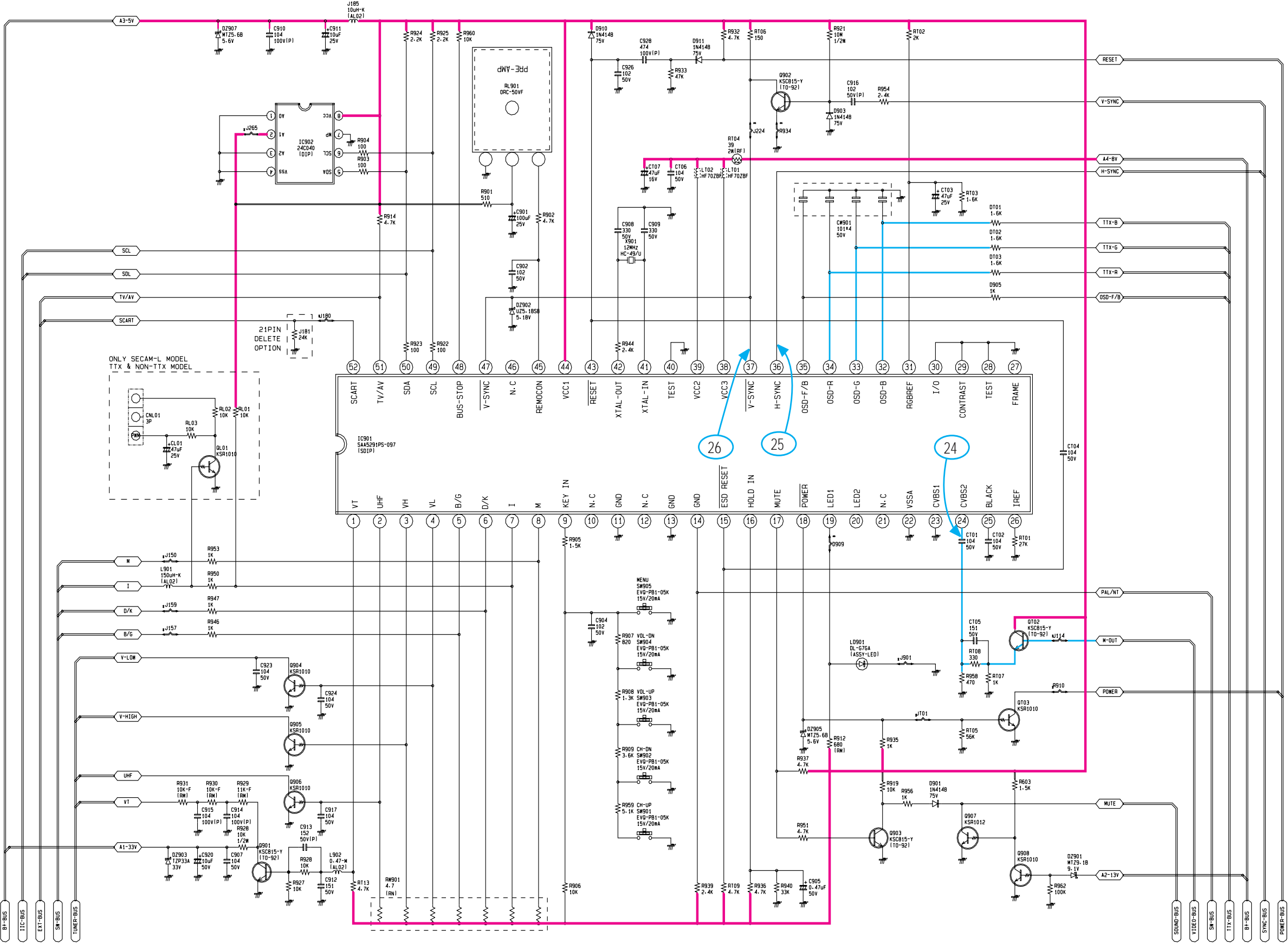




11-5 MICOM (NON-TTX)



11-6 MICOM (TTX)



— : Power Line
— : Signal Line