
11. Schematic Diagrams

	Page
◆ Block Identification of Main PCB	11-2
11-1 S.M.P.S/Power	11-3
11-2 System Control/Servo	11-4
11-3 Pre-Amp	11-6
11-4 Audio/Video	11-8
11-5 Hi-Fi Audio	11-10
11-6 I/O	11-12
11-7 IF	11-14
11-8 Sub(A2)	11-15
11-9 Sub(A2+NICAM)	11-16
11-10 VPS/PDC	11-17
11-11 Function-Timer	11-18
11-12 Remote-Control	11-19

Note

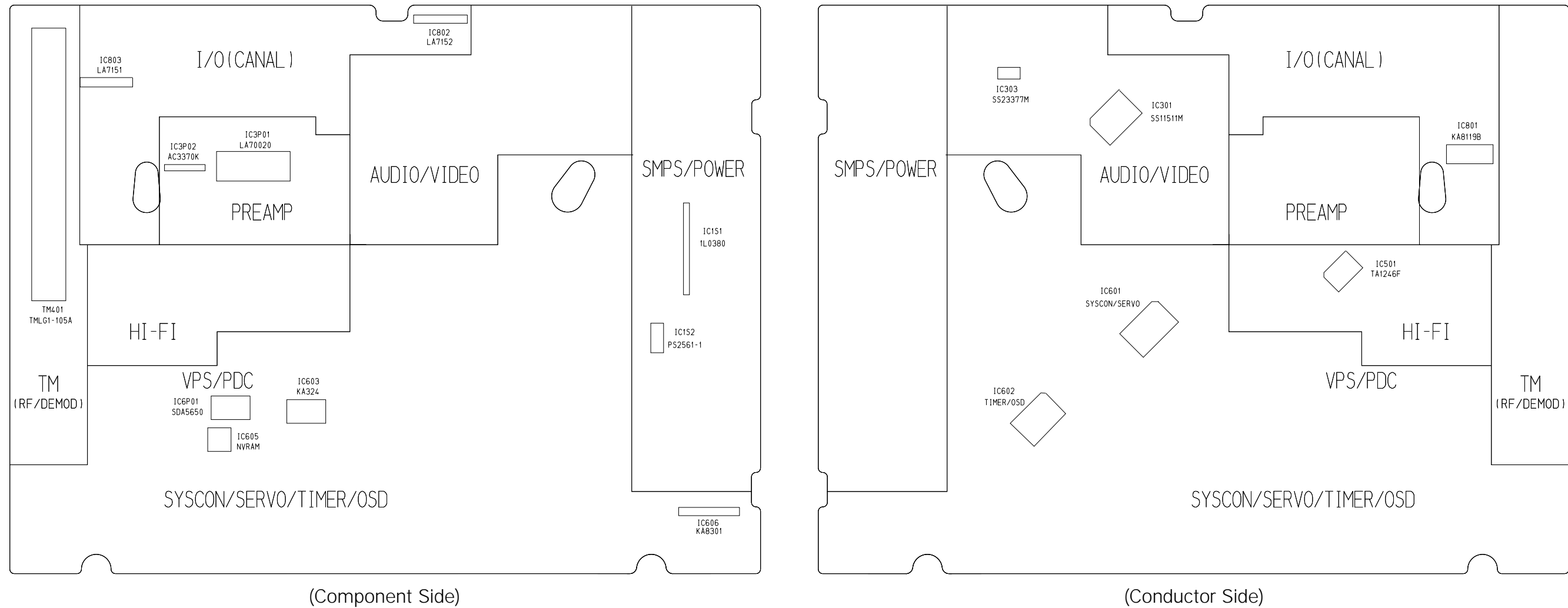
For schematic Diagram
- Resistors are in ohms, 1/8W unless otherwise noted.
- Circled numbers refer to waveforms.

Special note :
Most semiconductor devices are electrostatically sensitive and therefore require the special handling techniques described under the “electrostatically sensitive (ES) devices” section of this service manual.

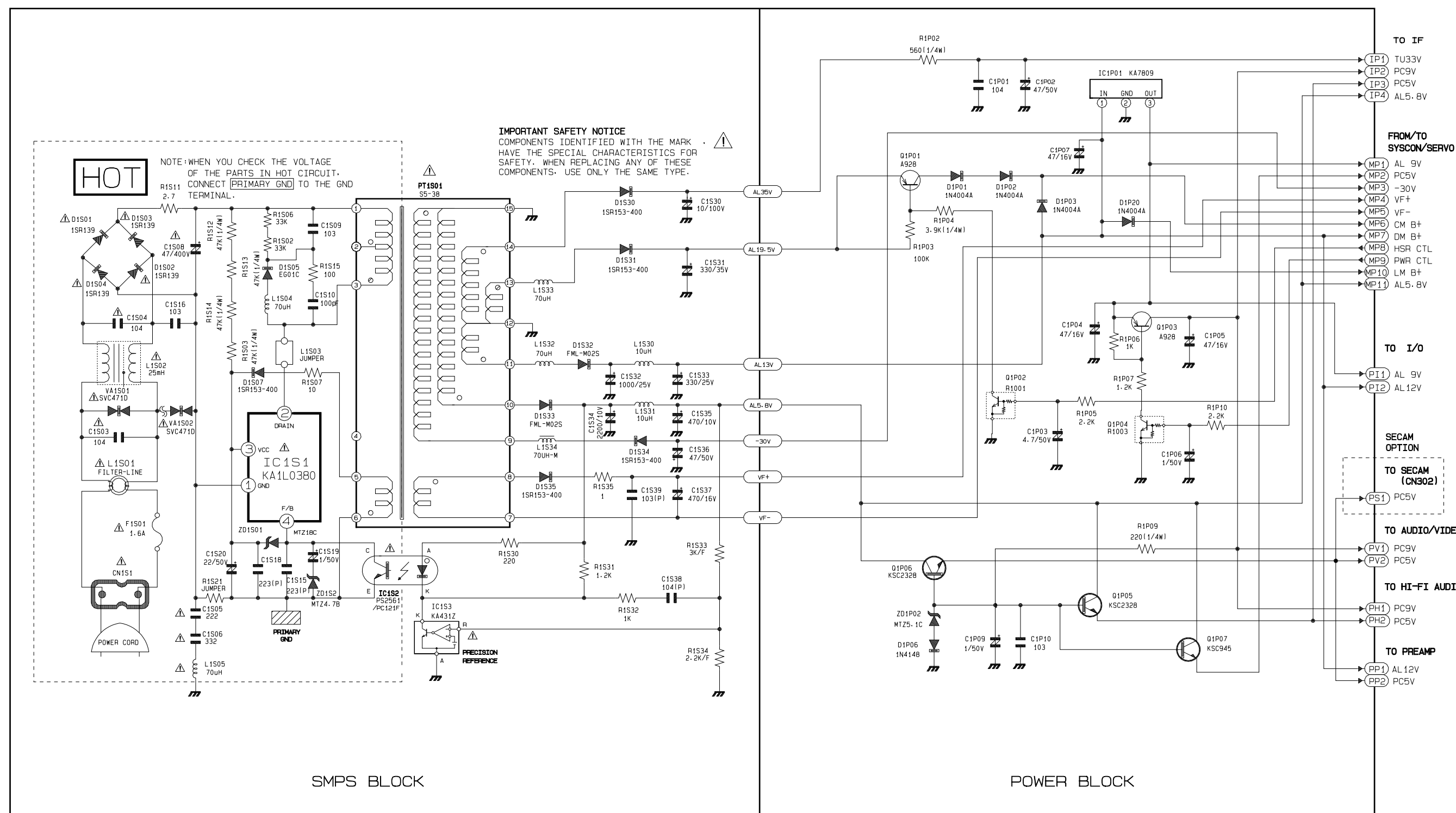
Note :
Do not use the part number shown on this drawing for ordering. The correct part number is shown in the parts list (may be slightly different or amended since this drawing was prepared).

Important safety notices :
Components identified with the mark ⚠ have the special characteristics for safety. When replacing any of these components. Use only the same type.

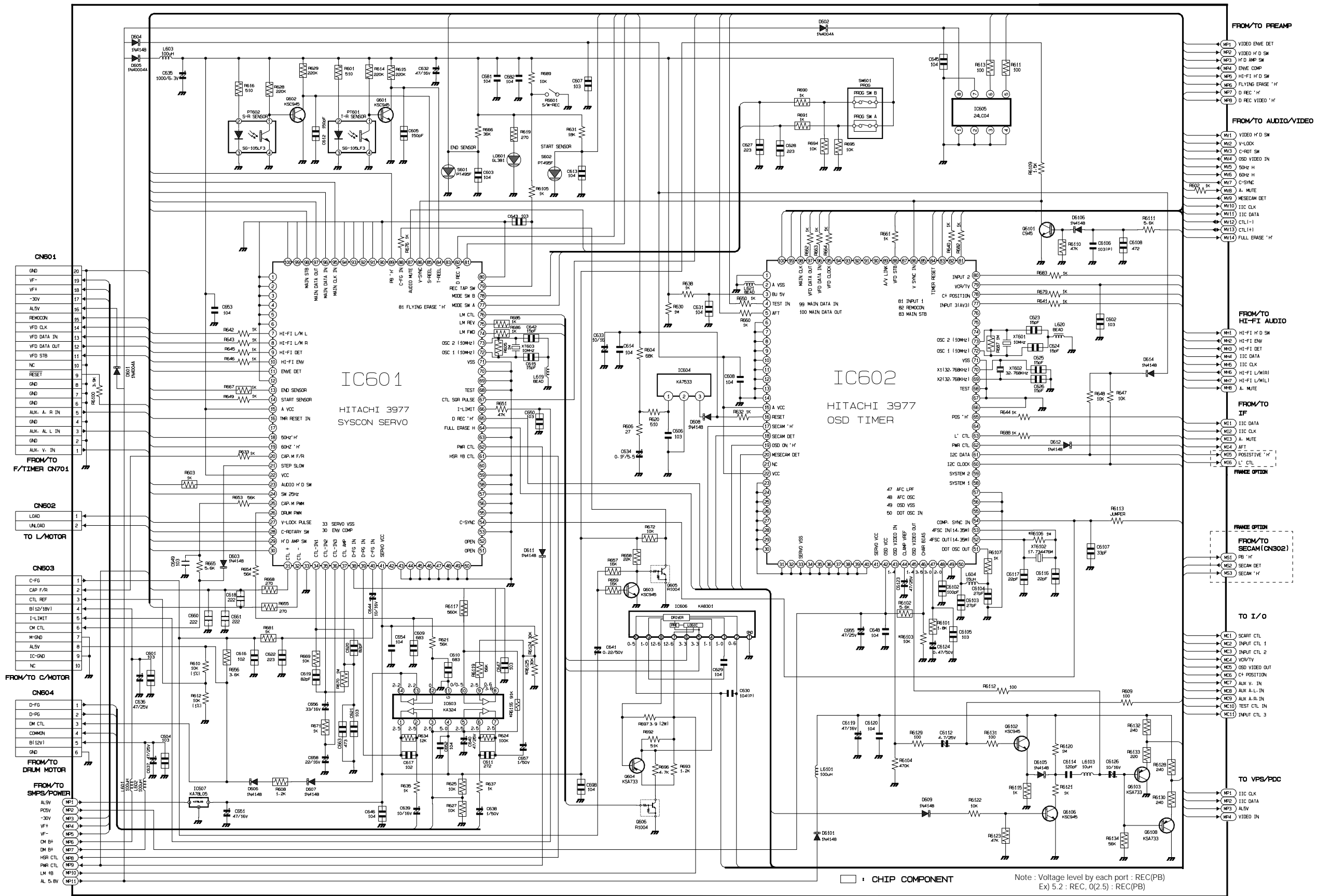
◆ Block Identification of Main PCB

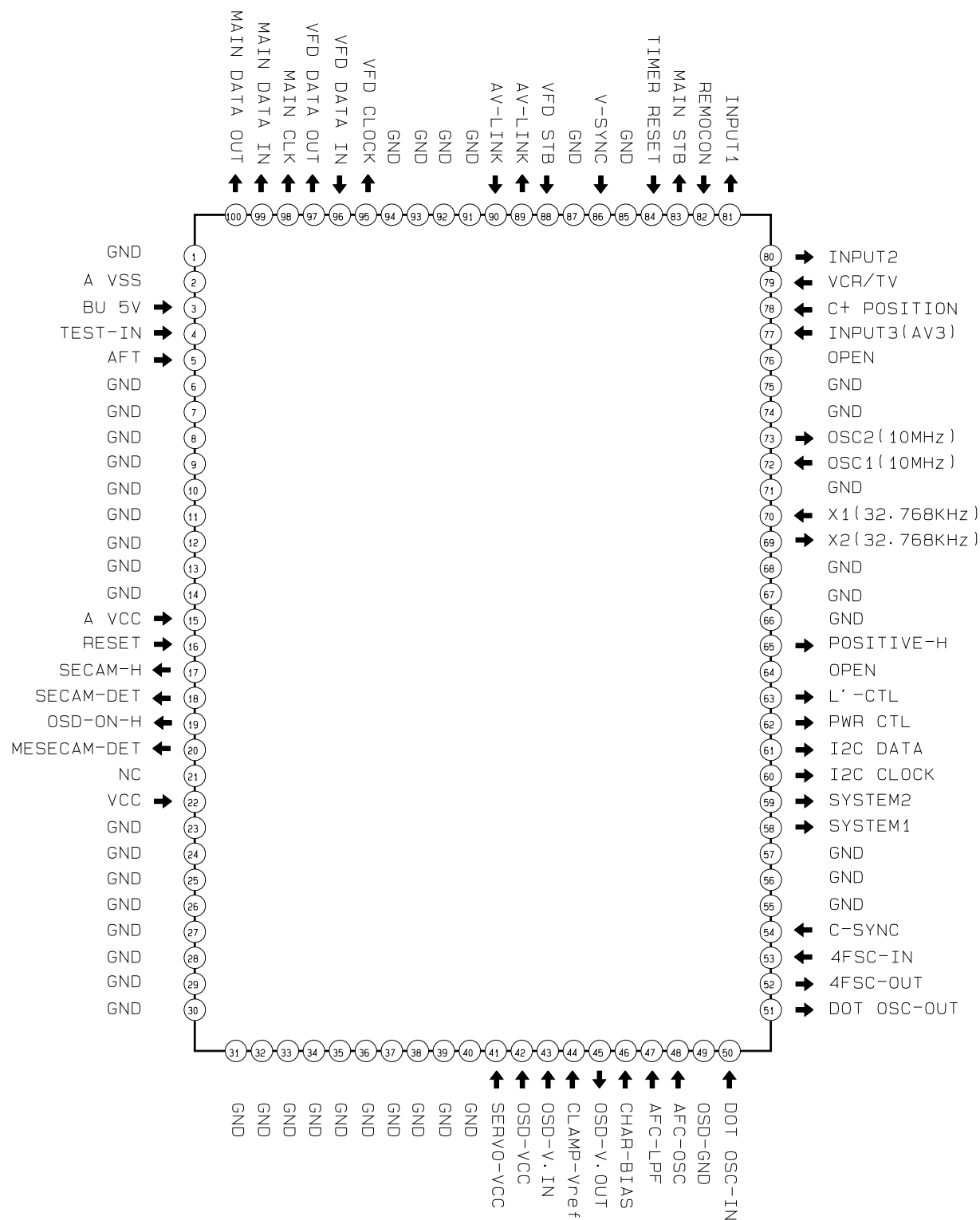


11-1 S.M.P.S/POWER

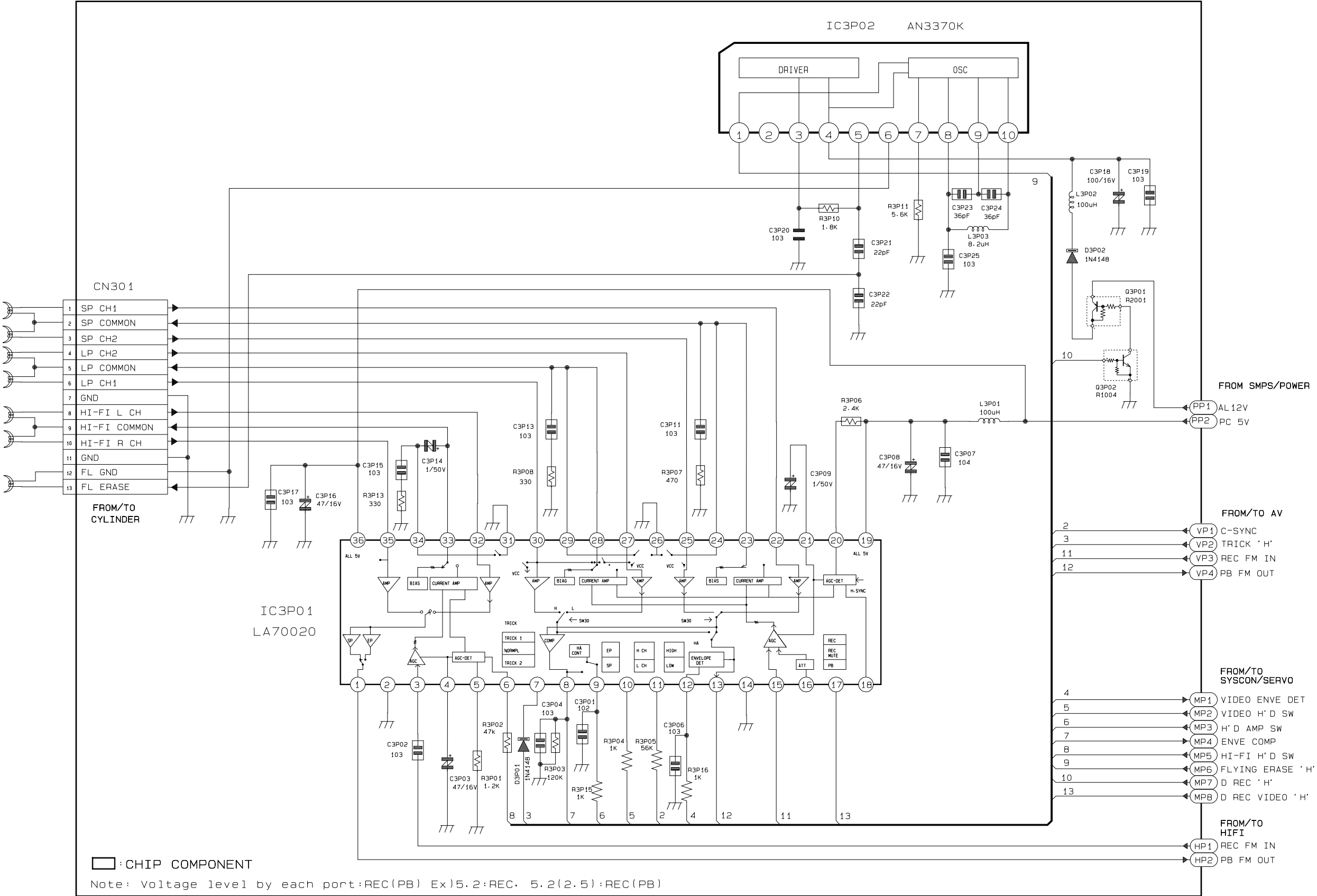


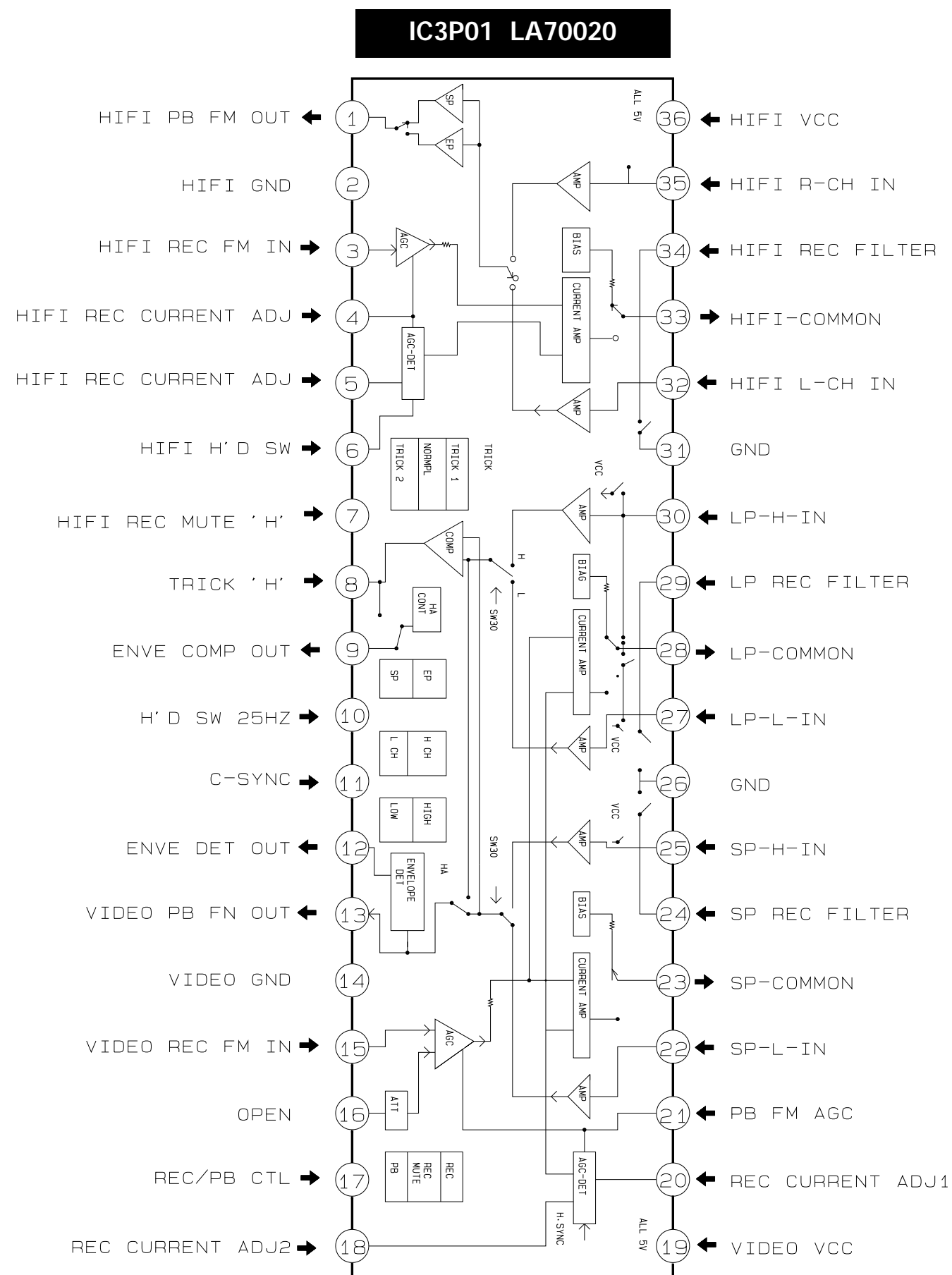
11-2 System Control/Servo



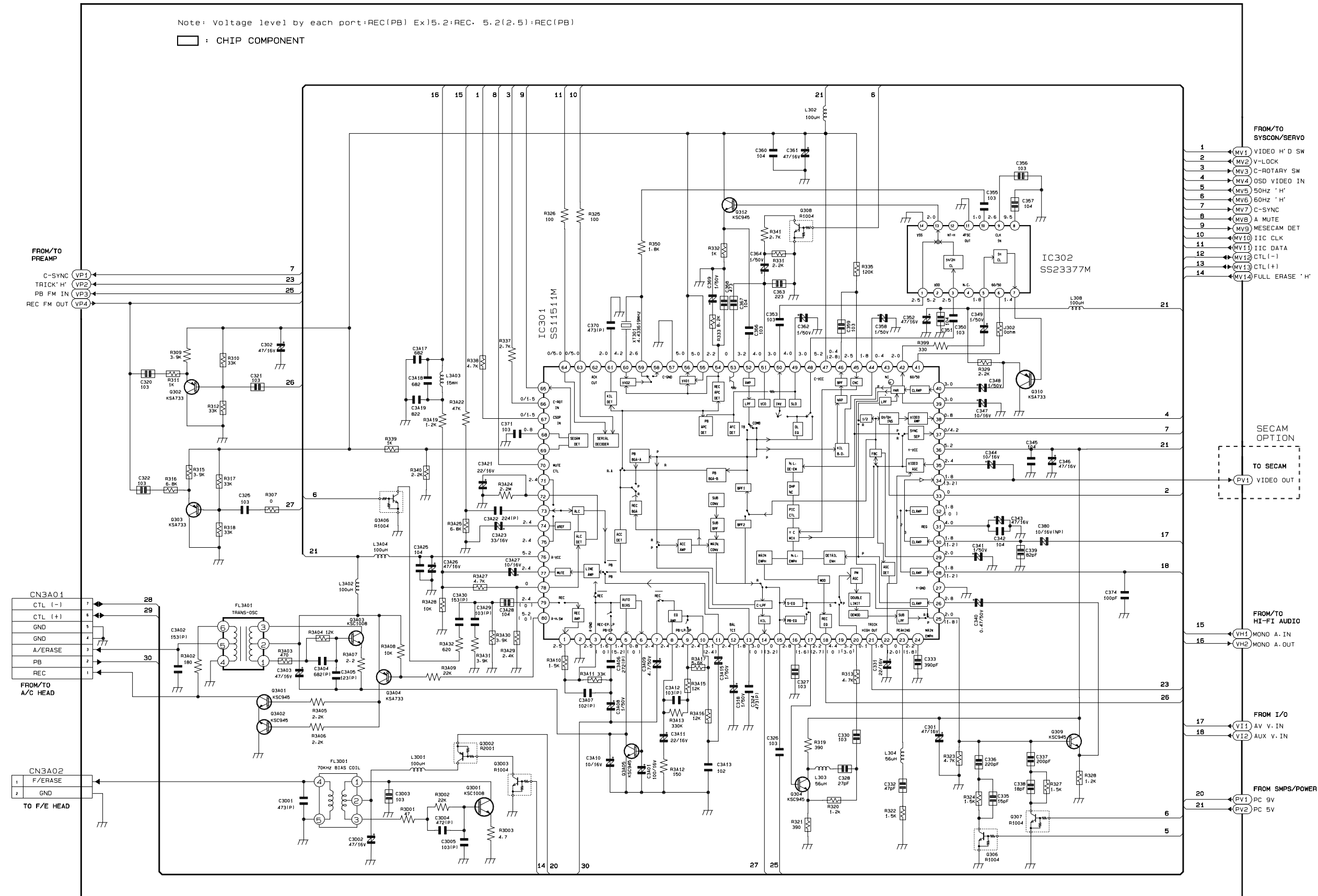


11-3 Pre-Amp

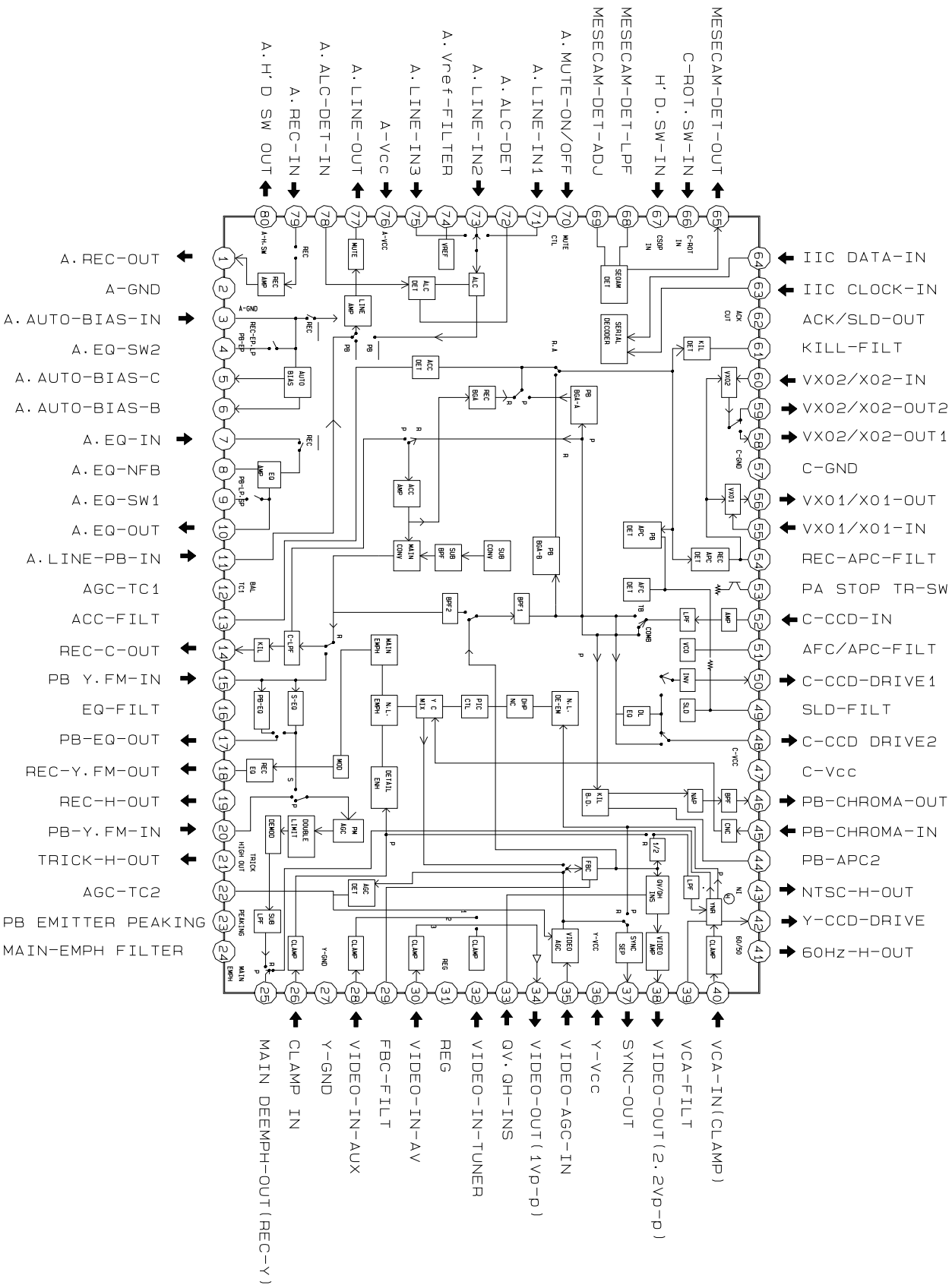




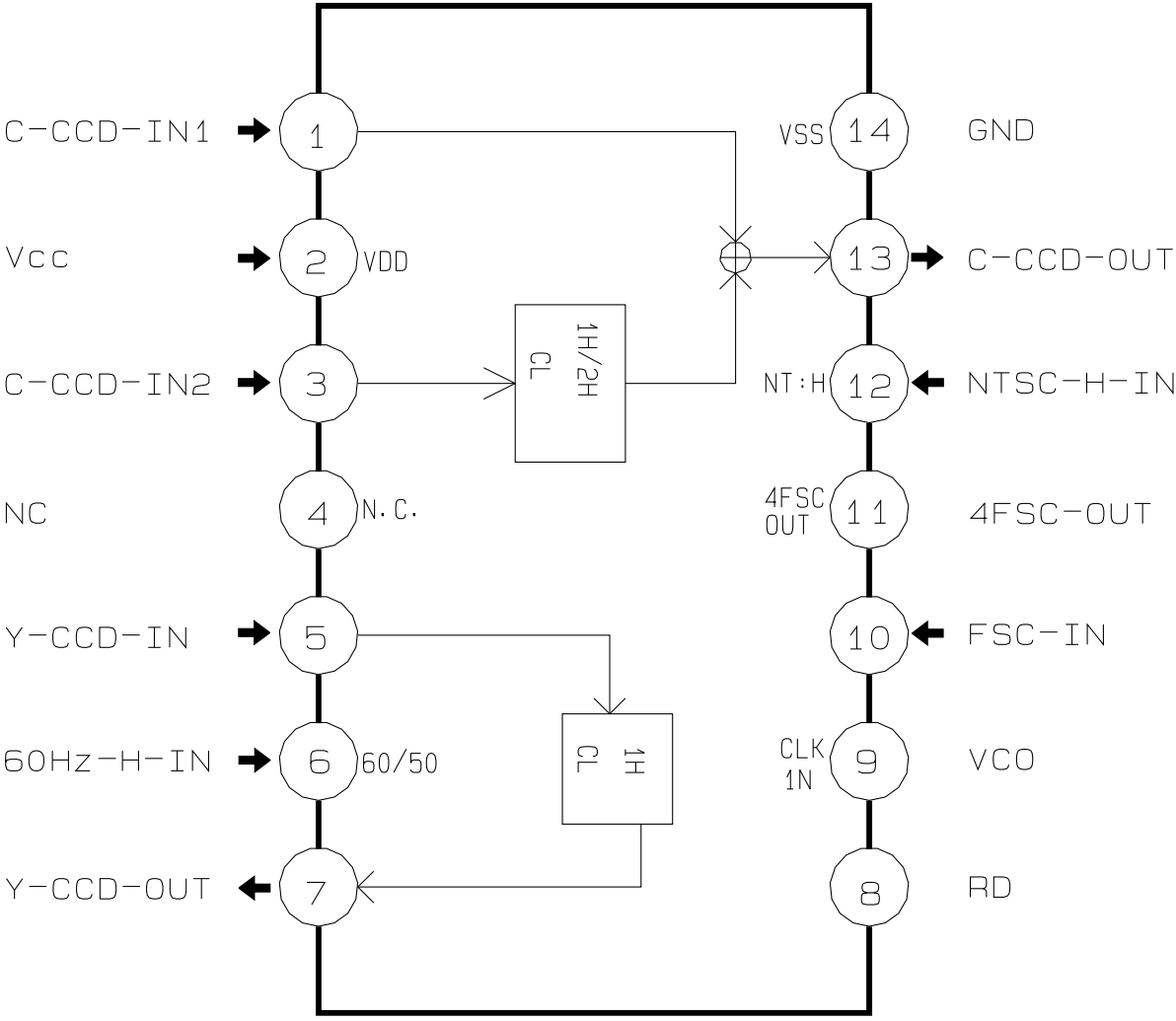
11-4 Audio/Video



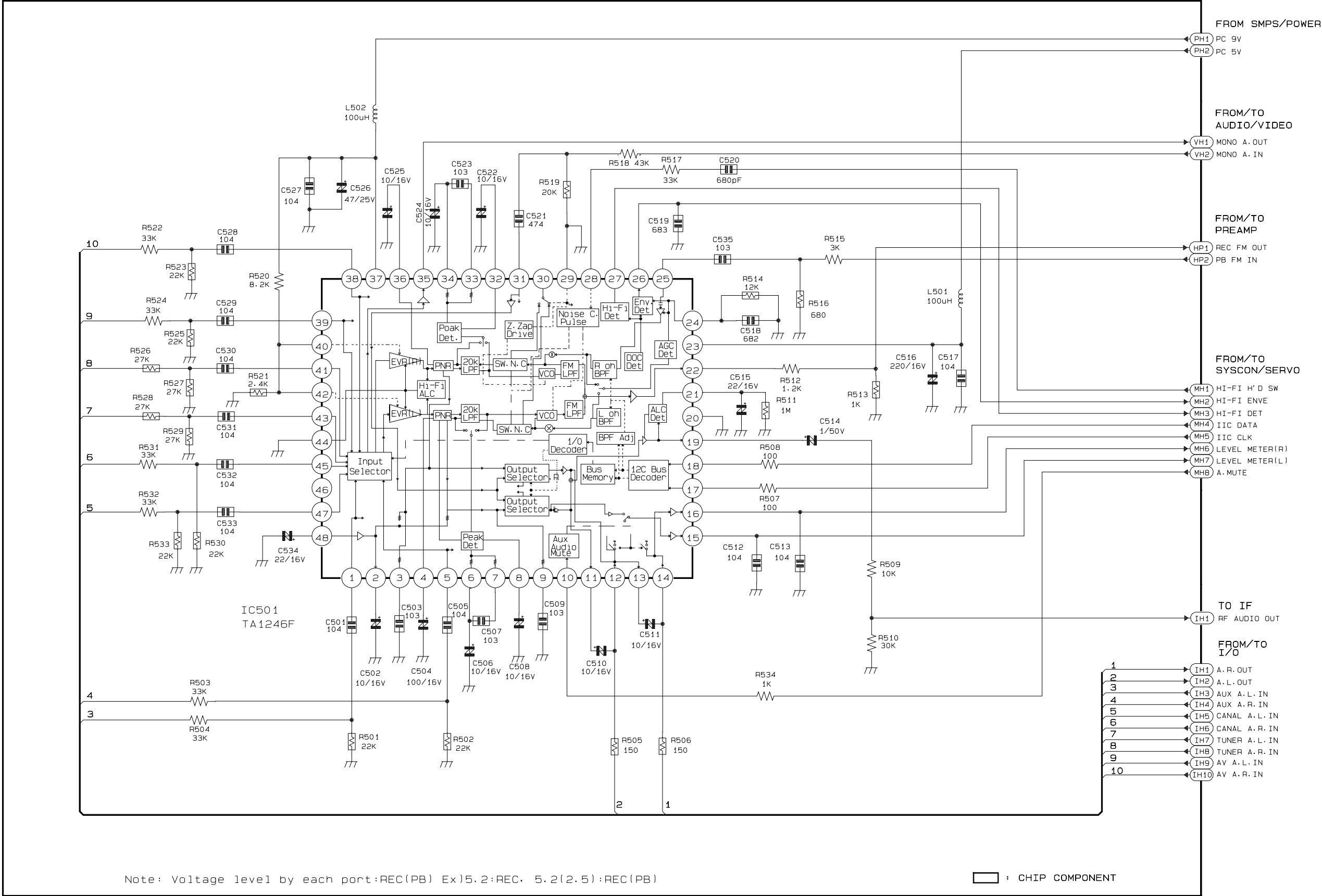
IC301 SS11511M



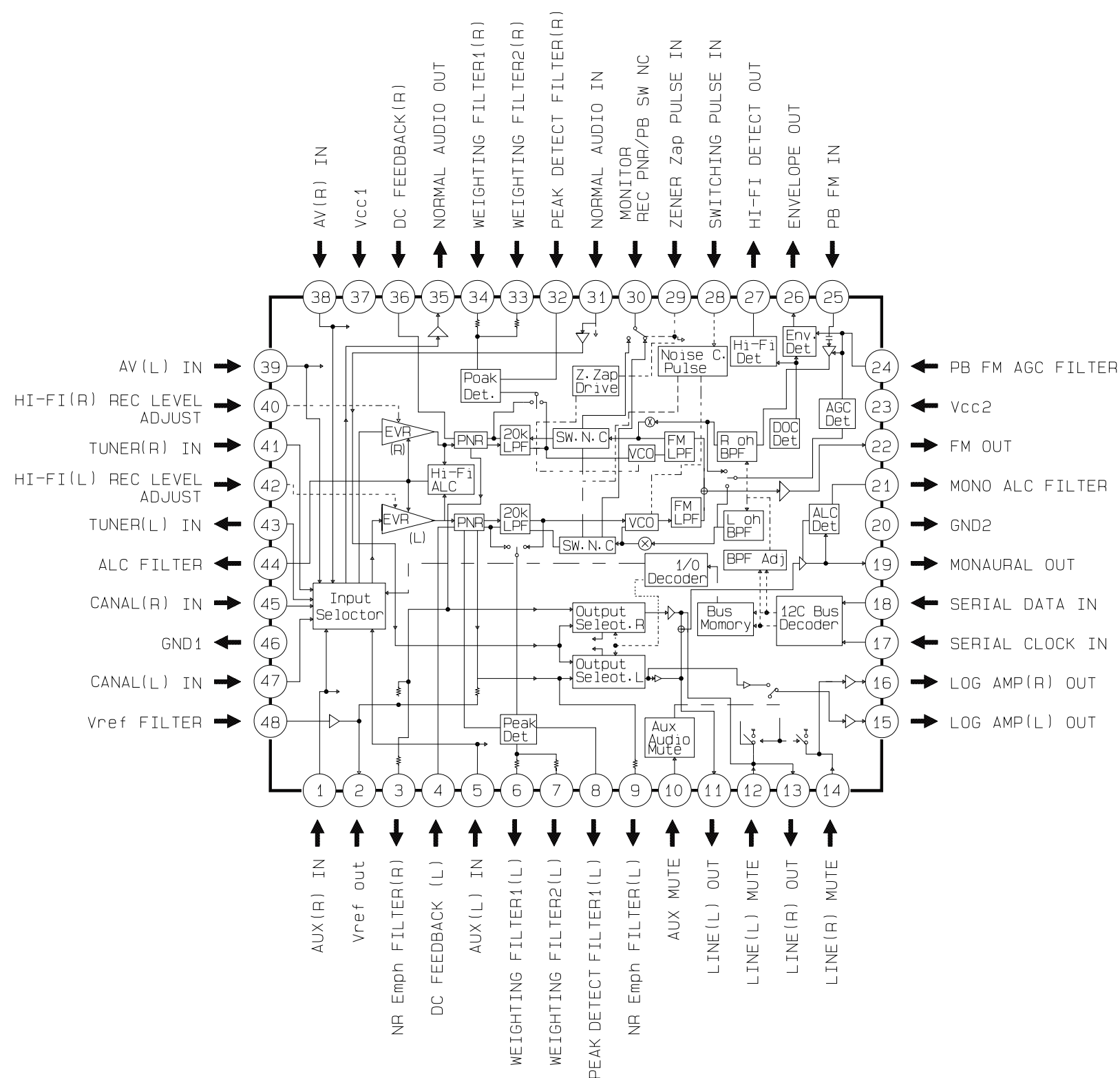
IC303 SS23377M



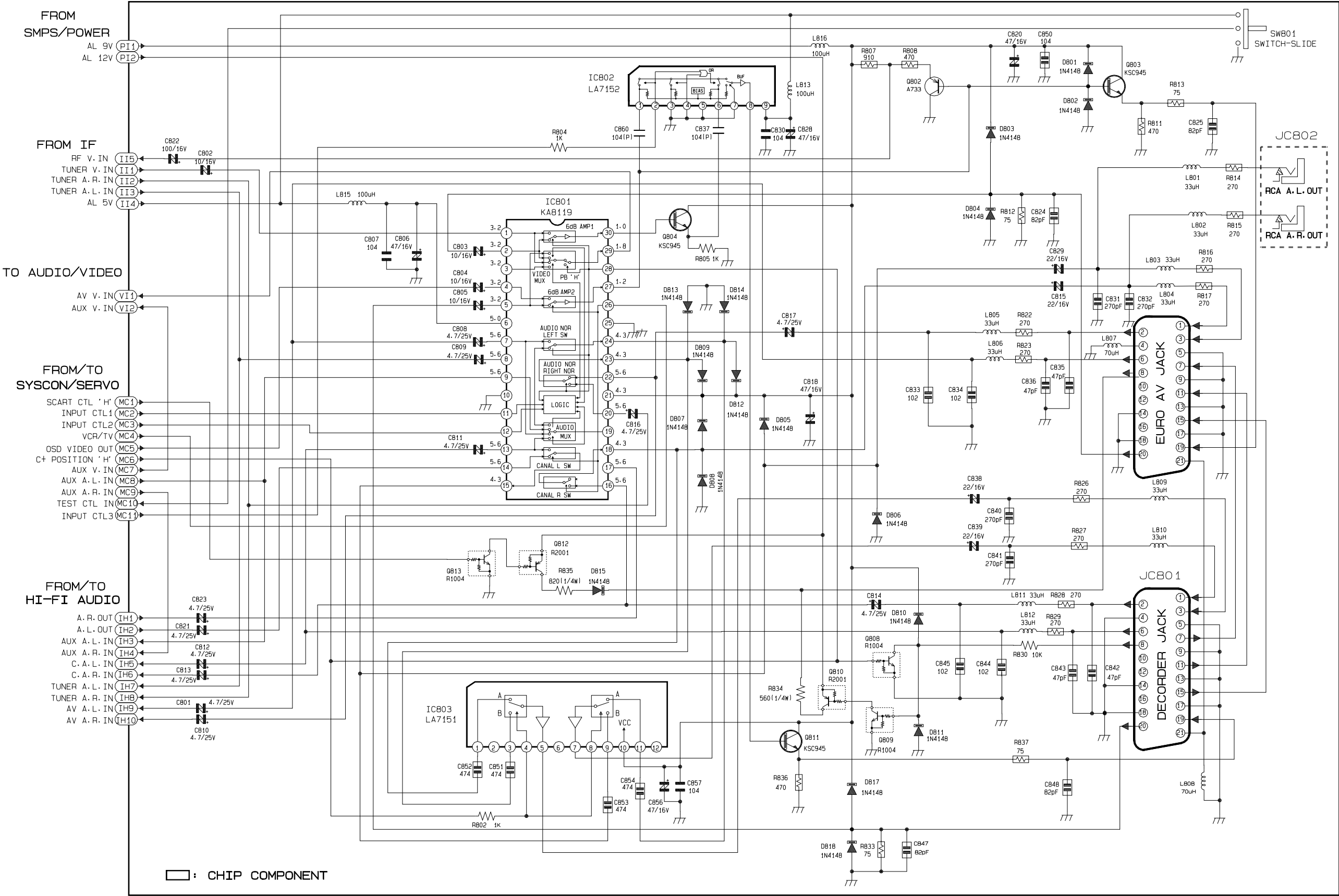
11-5 Hi-Fi Audio

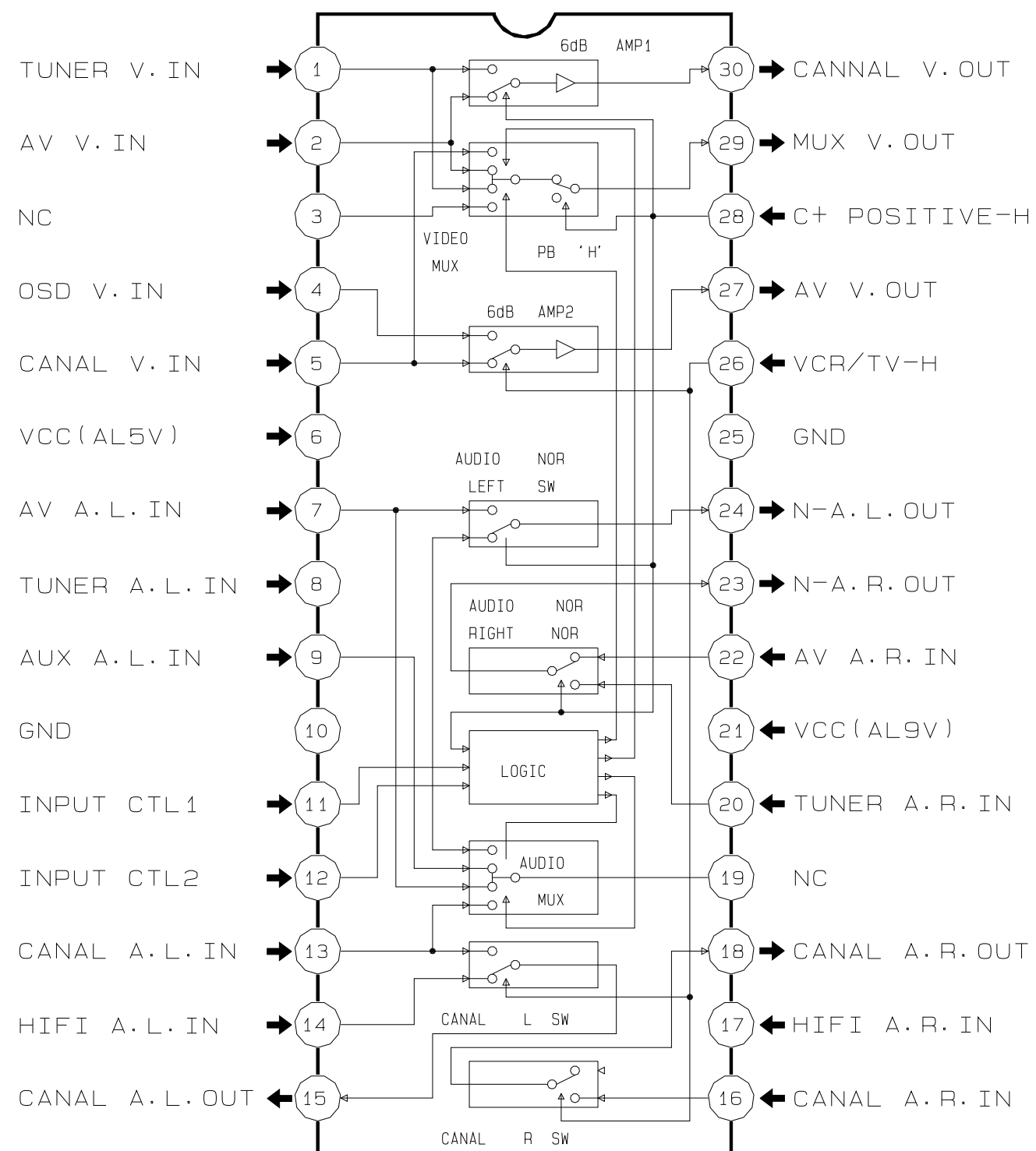


IC501 TA1246F

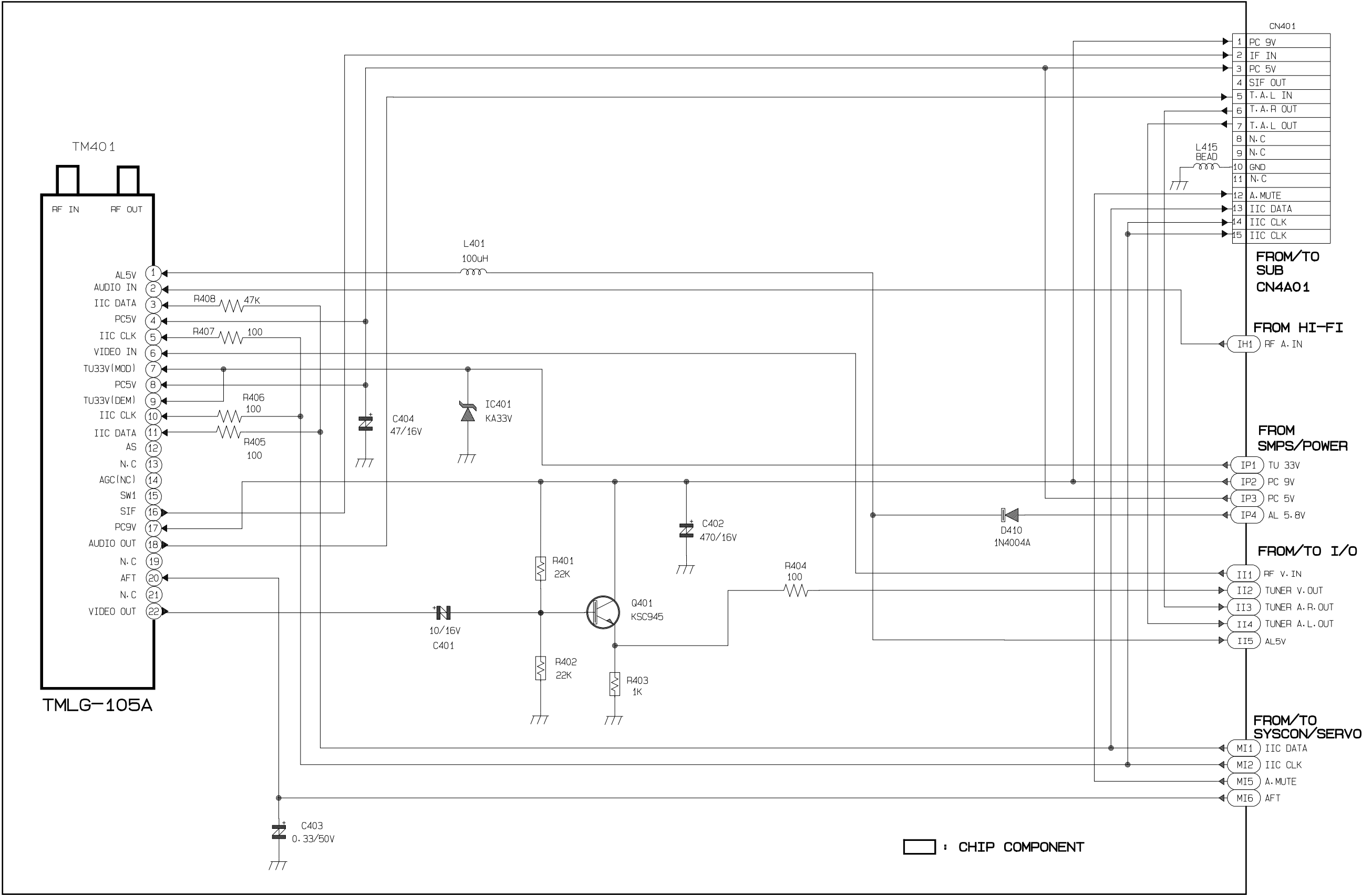


11-6 I/O

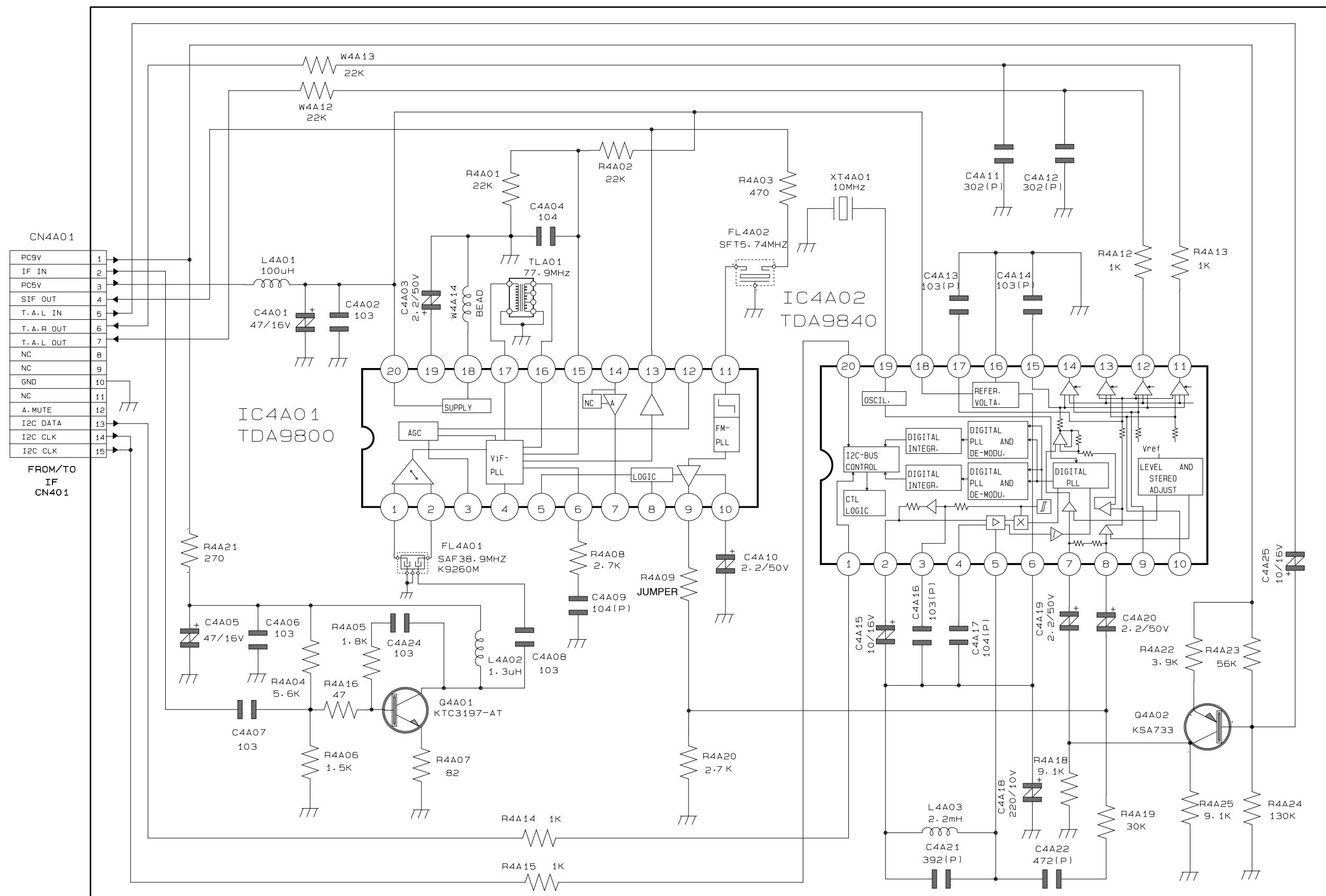


IC801 KA8119

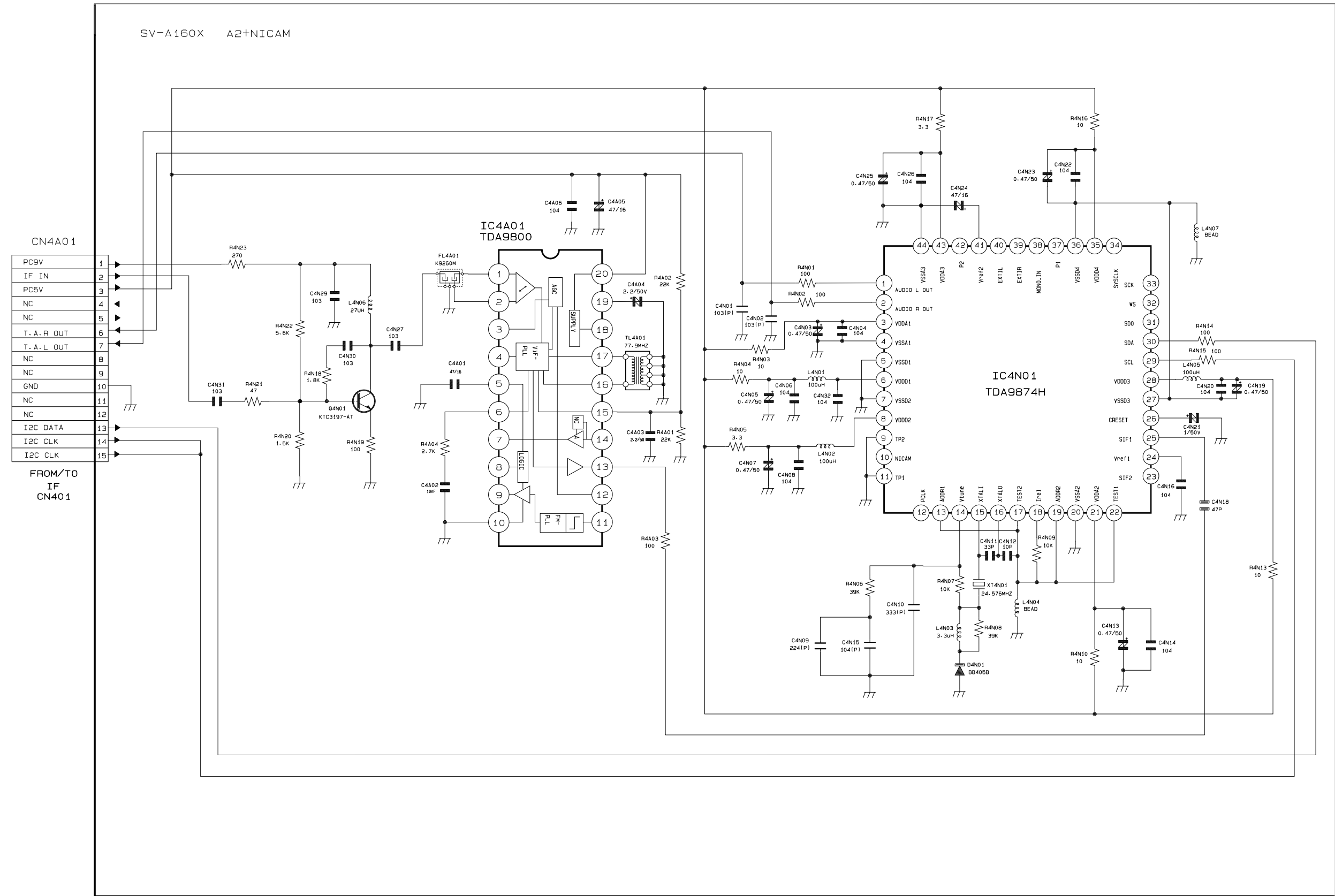
11-7 IF



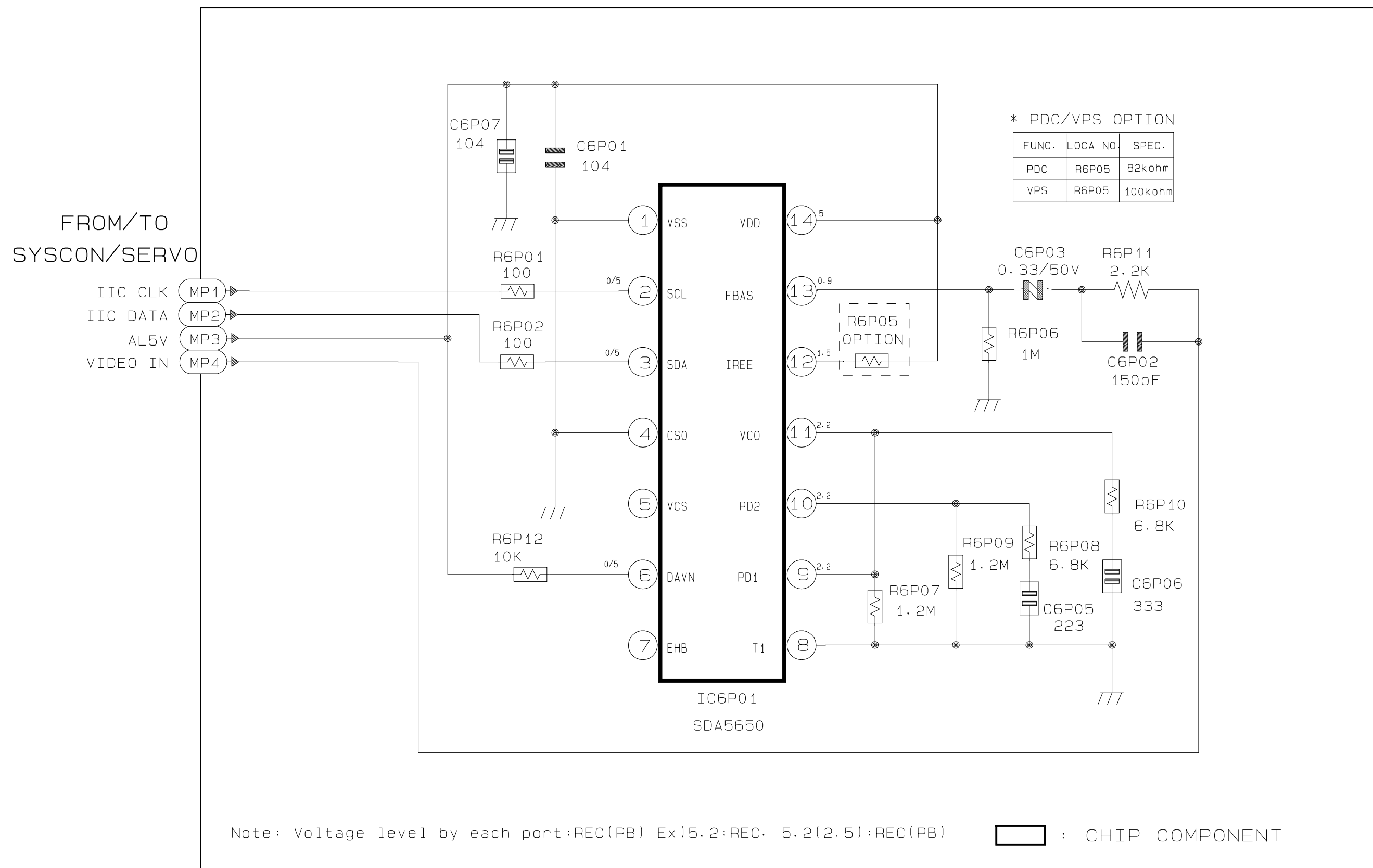
11-8 Sub(A2)



11-9 Sub(A2+NICAM)



11-10 VPS/PDC





11-12 Remote-Control

