
11. Schematic Diagrams

	Page
◆ Block Identification of Main PCB - - - - -	11-2
11-1 S.M.P.S/Power - - - - -	11-3
11-2 System Control/Servo - - - - -	11-4
11-3 Audio/Video - - - - -	11-6
11-4 Hi-Fi - - - - -	11-8
11-5 Karaoke - - - - -	11-10
11-6 I/O - - - - -	11-11
11-7 Function - - - - -	11-12
11-8 Remote-Control - - - - -	11-13

Note

For schematic Diagram

- Resistors are in ohms, 1/8W unless otherwise noted.
- Circled numbers refer to waveforms.


Special note :

Most semiconductor devices are electrostatically sensitive and therefore require the special handling techniques described under the "electrostatically sensitive (ES) devices" section of this service manual.

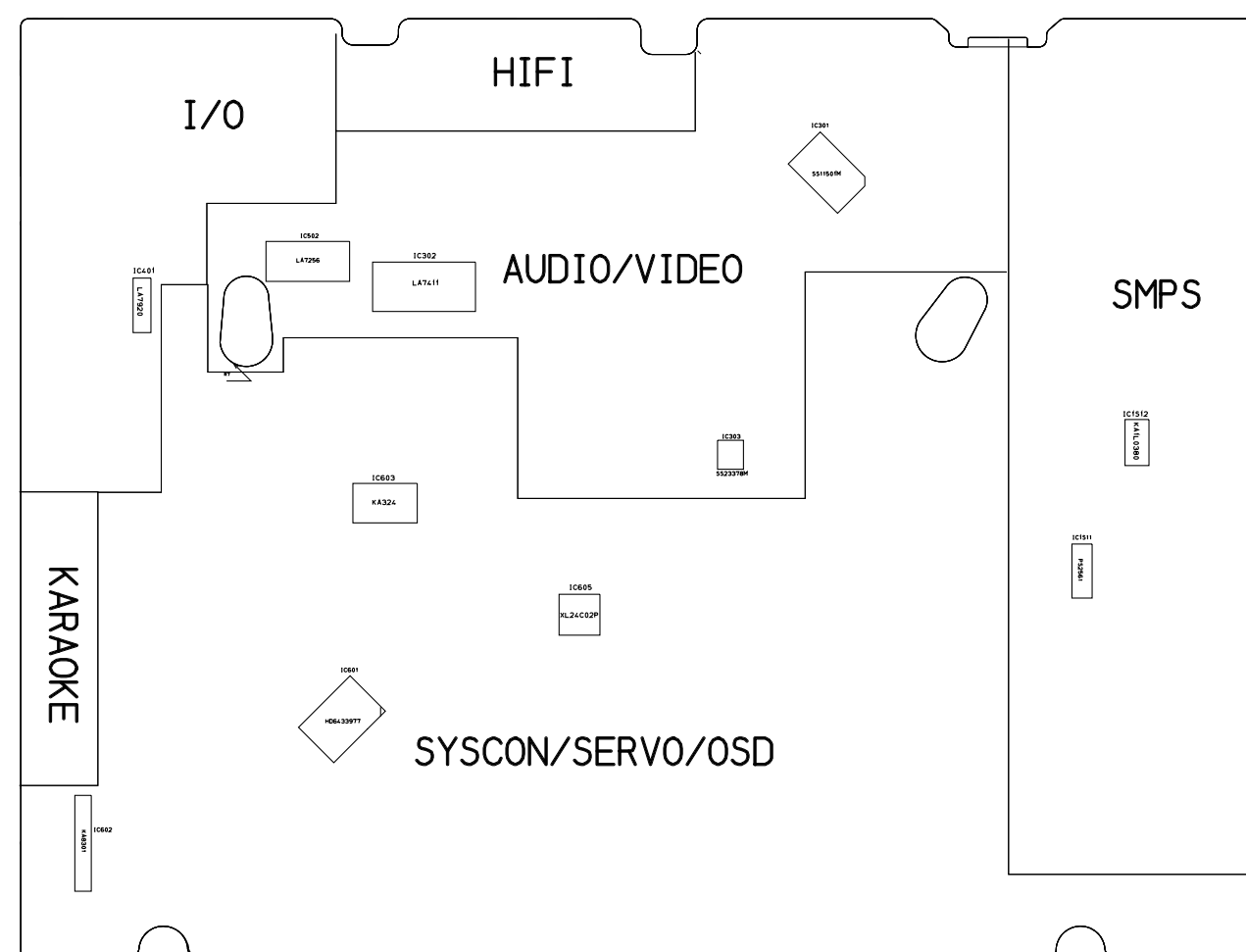
Note :

Do not use the part number shown on this drawing for ordering. The correct part number is shown in the parts list (may be slightly different or amended since this drawing was prepared).

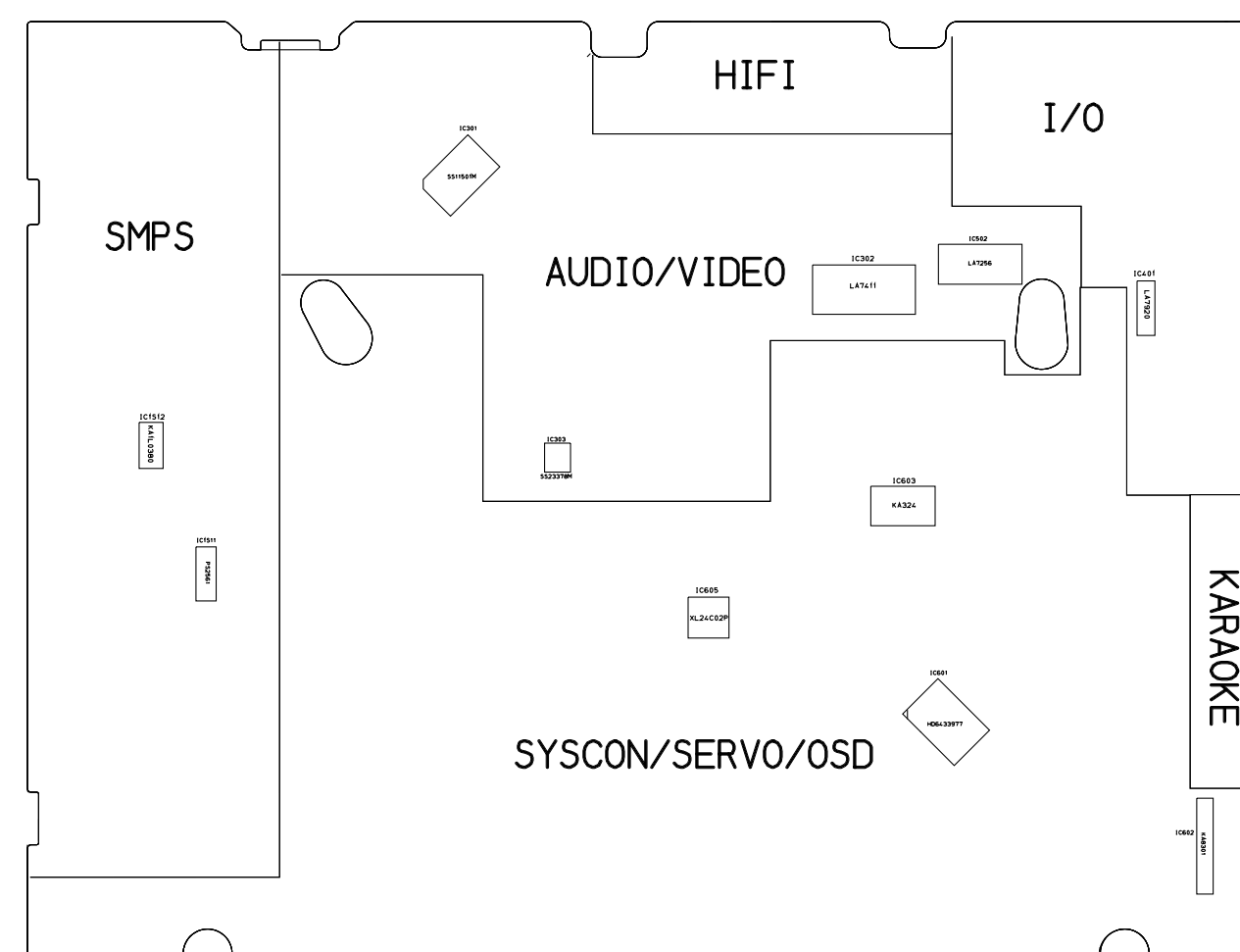
Important safety notices :

Components identified with the mark  have the special characteristics for safety. When replacing any of these components. Use only the same type.

◆ Block Identification of Main PCB

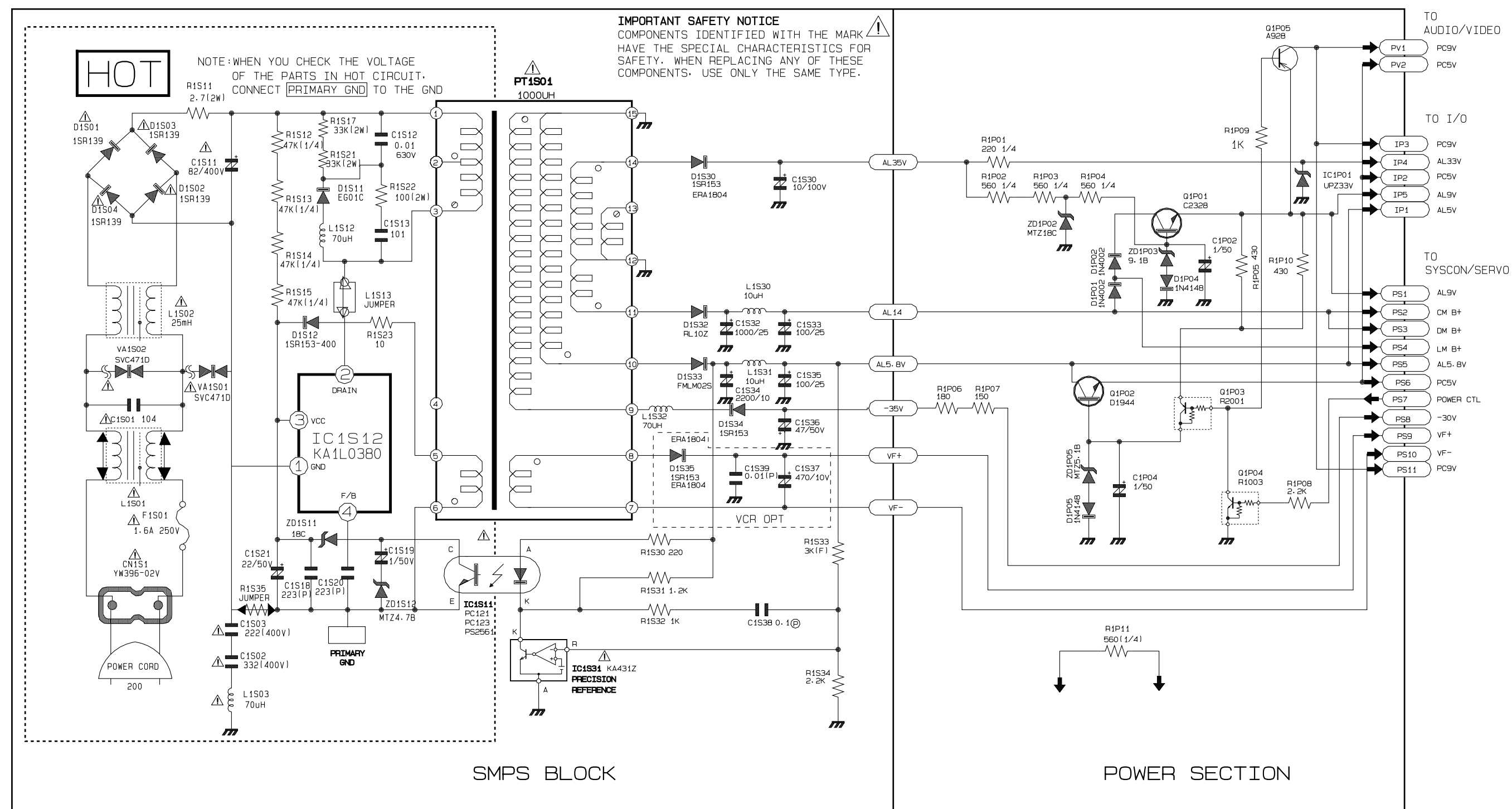


(Component Side)

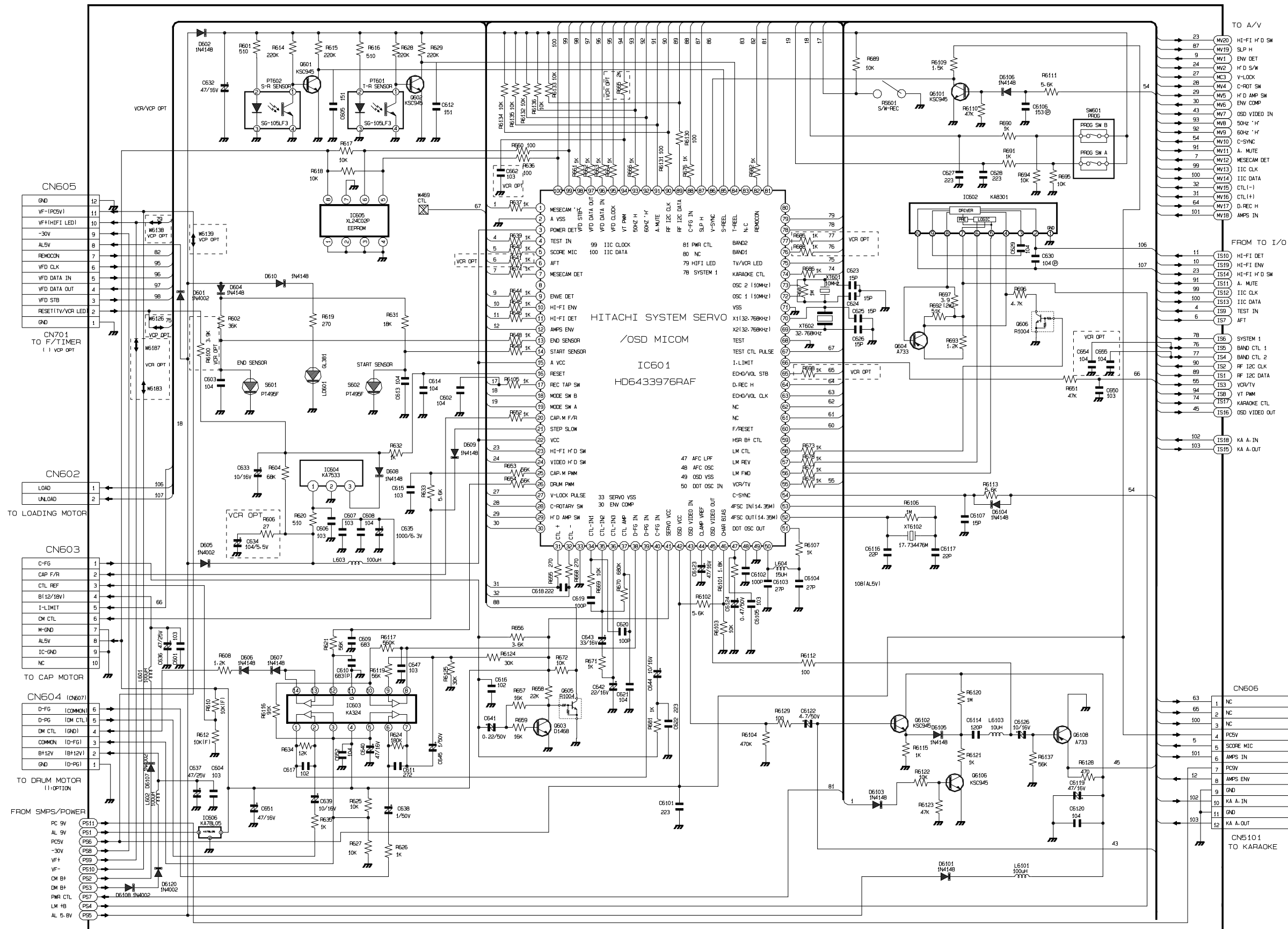


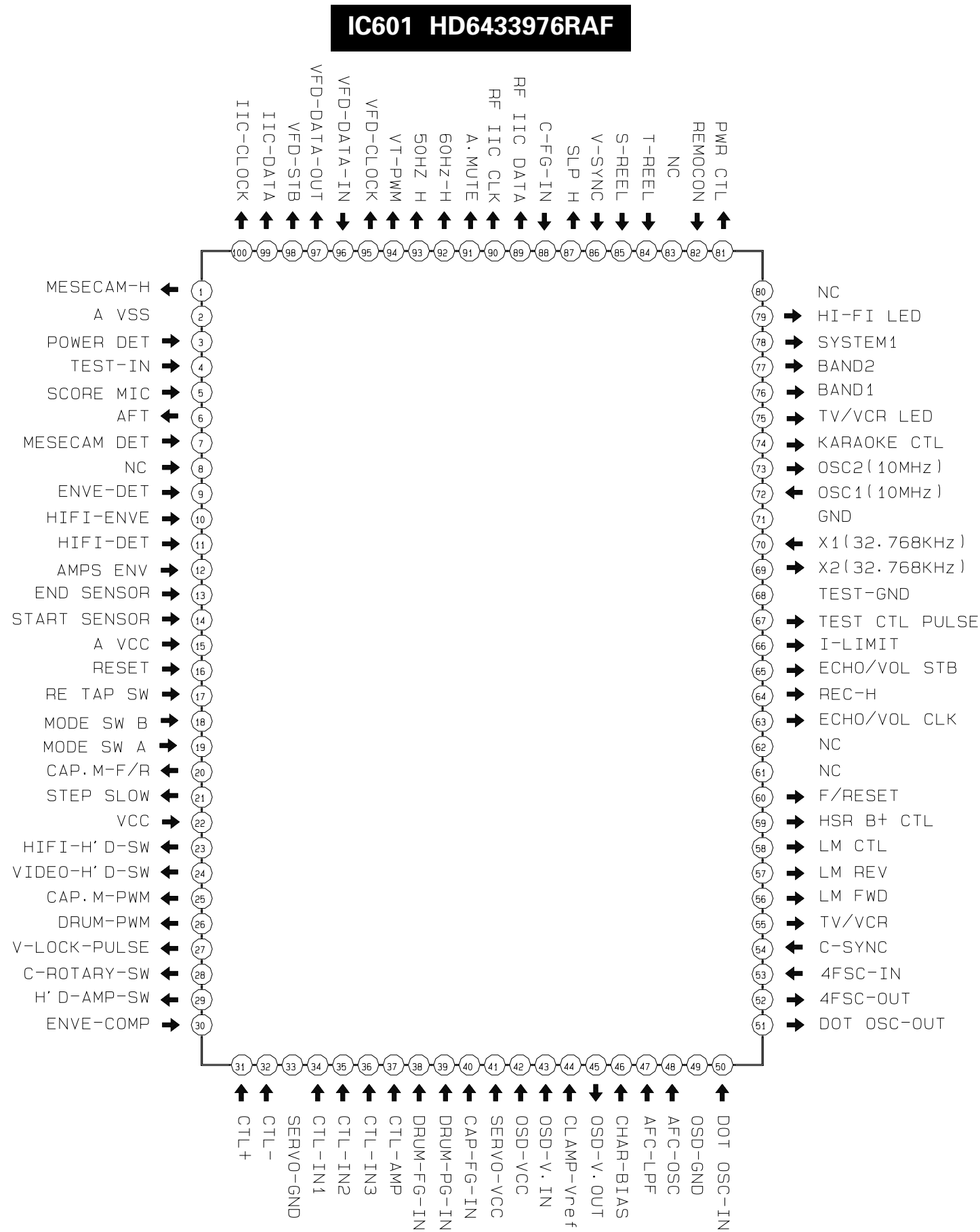
(Conductor Side)

11-1 S.M.P.S/POWER



11-2 System Control/Servo





— PB Y PROCESS
 - - - PB C PROCESS

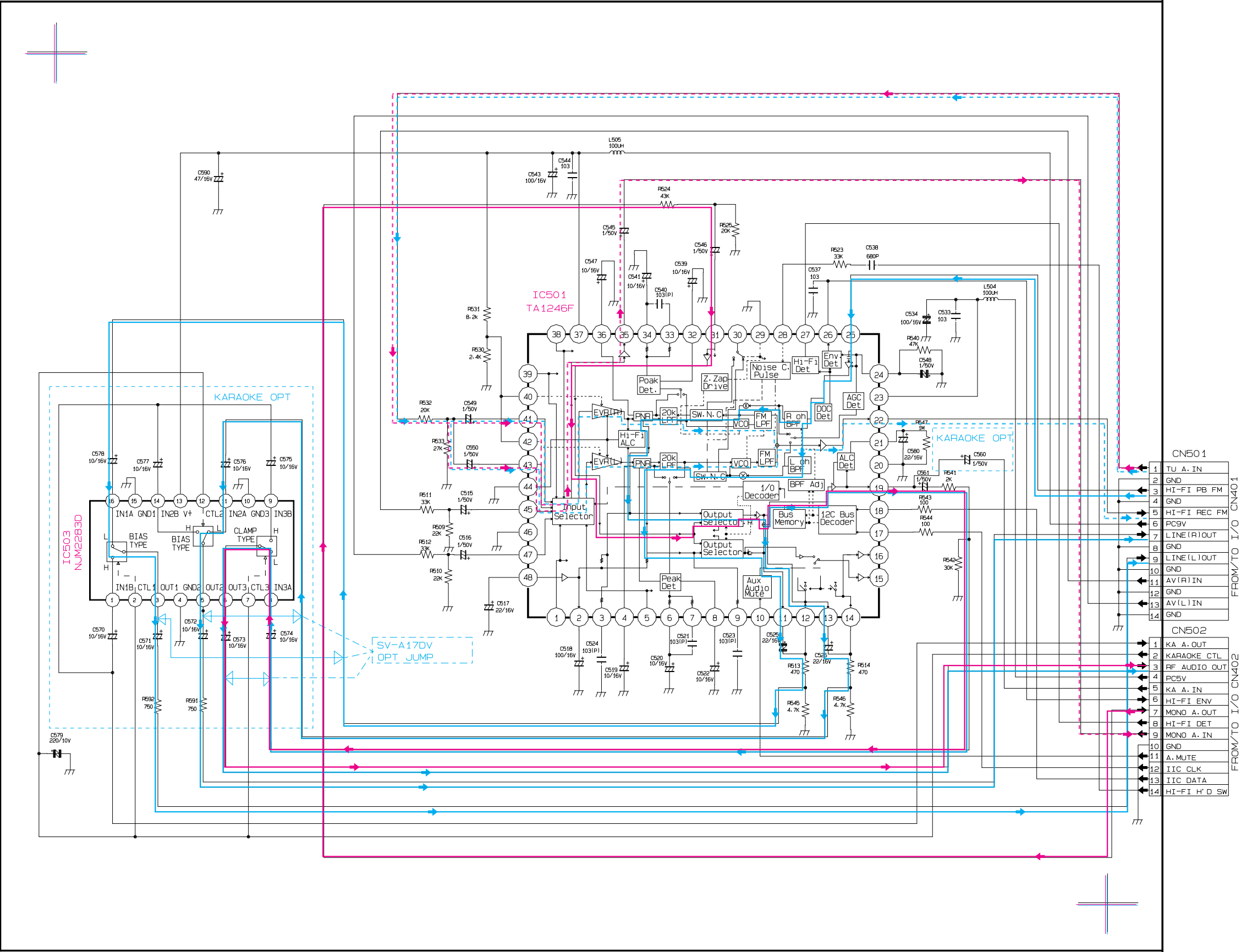
— REC LINEAR AUDIO
- - - - - PB LINEAR AUDIO



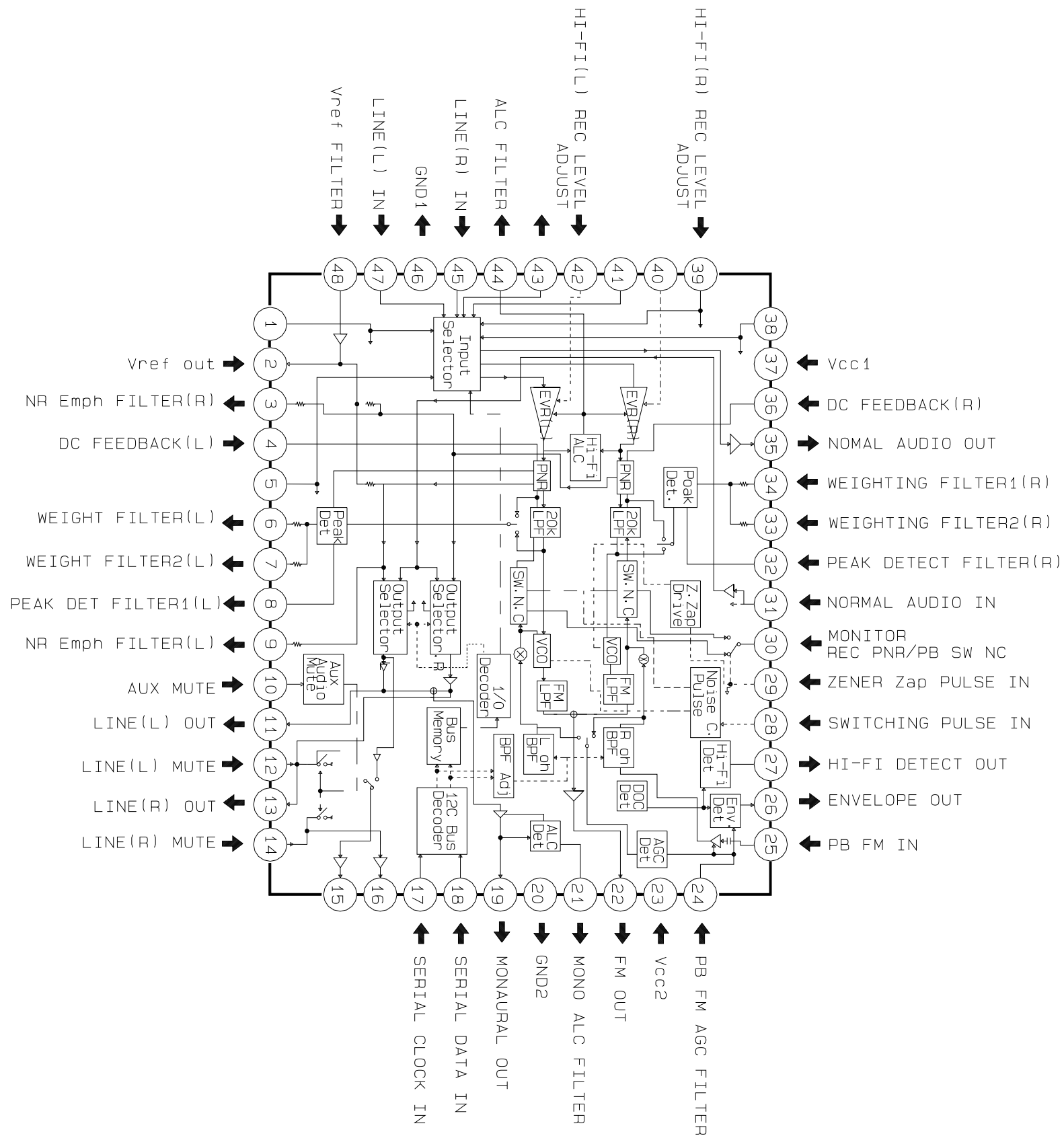


11-4 Hi-Fi

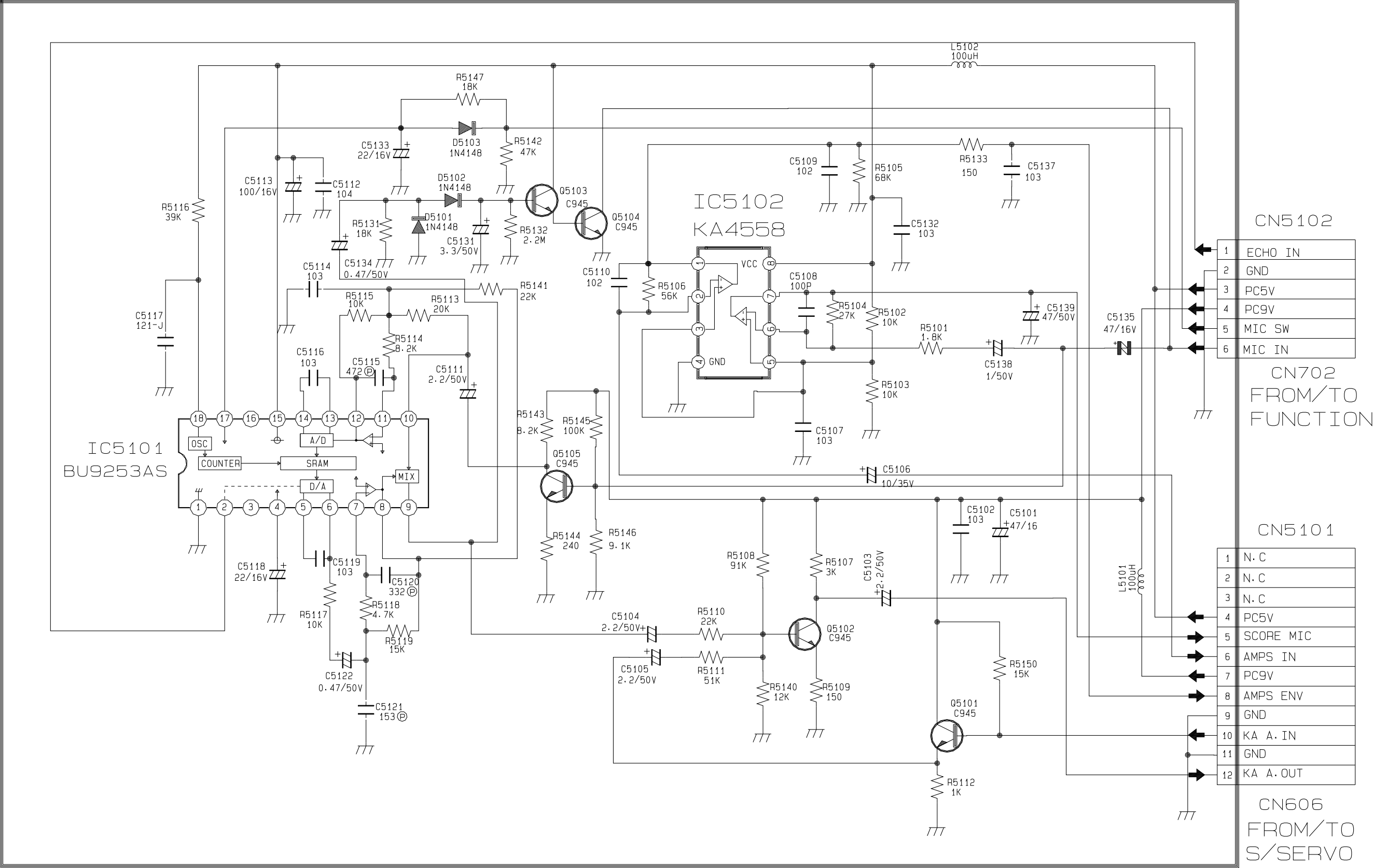
———— AUDIO PB (MONO) ————— AUDIO PB (Hi-Fi)
- - - - - AUDIO REC (MONO) - - - - - AUDIO REC (Hi-Fi)



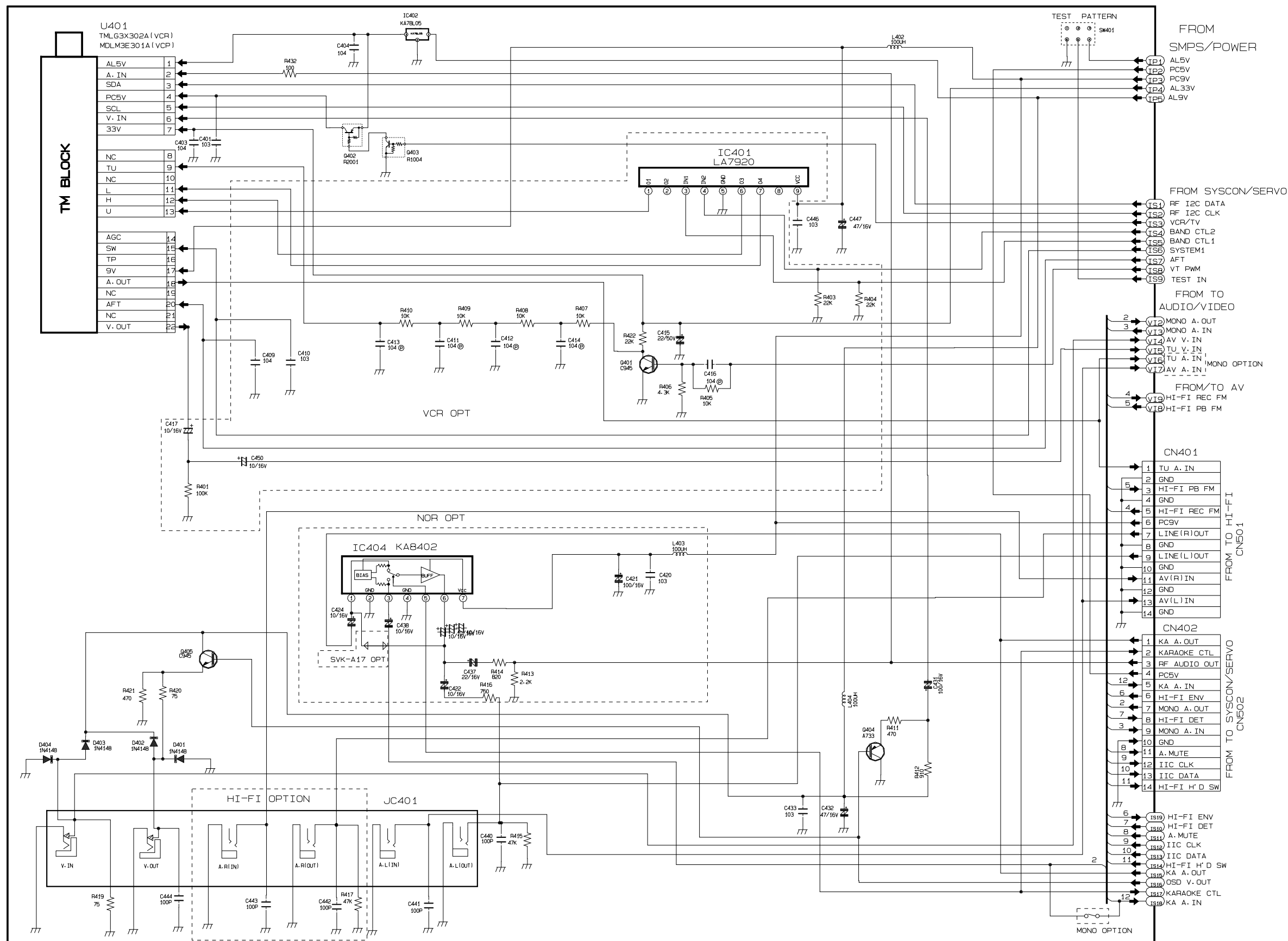
IC501 TA1246F



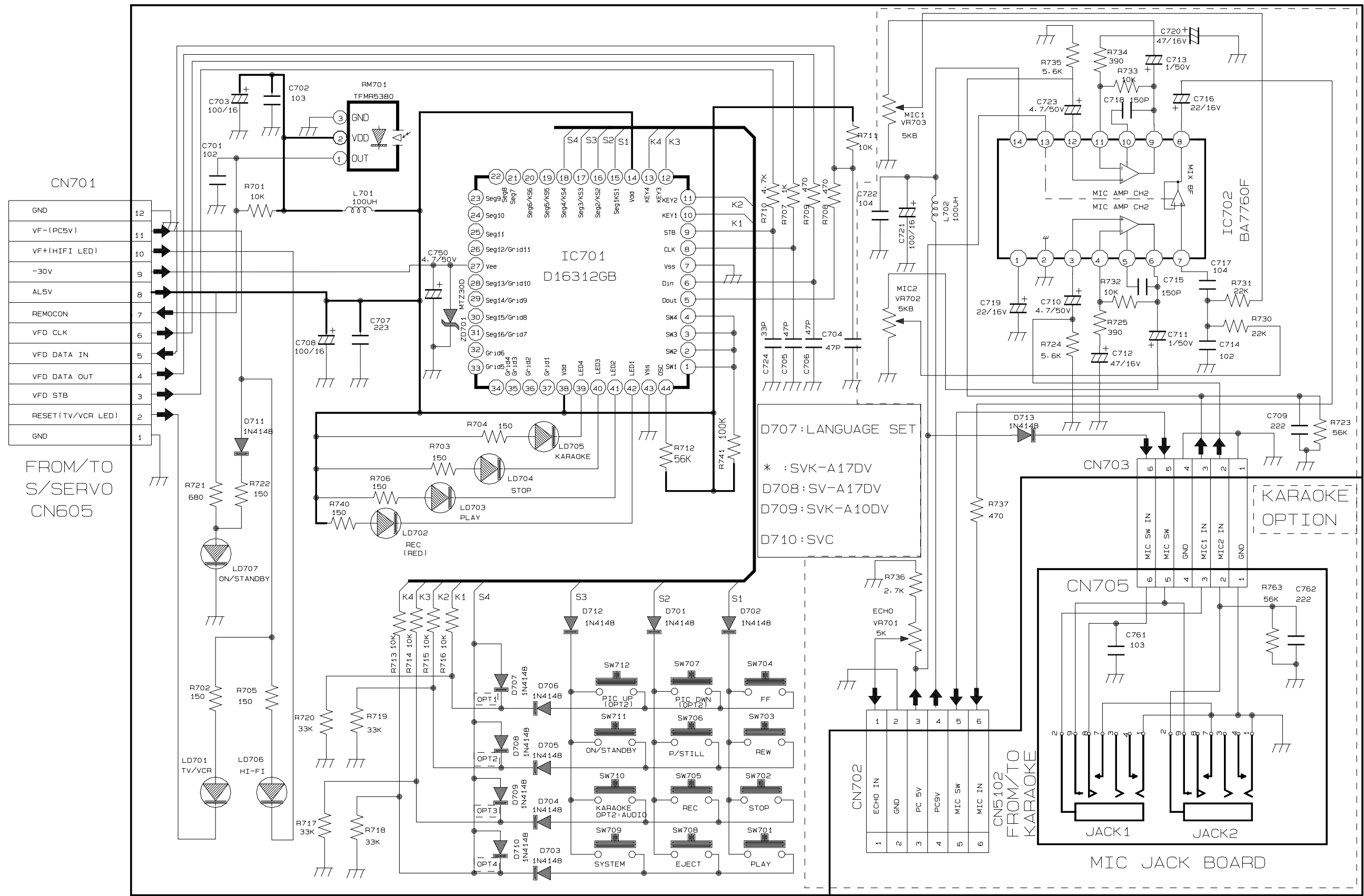
11-5 Karaoke



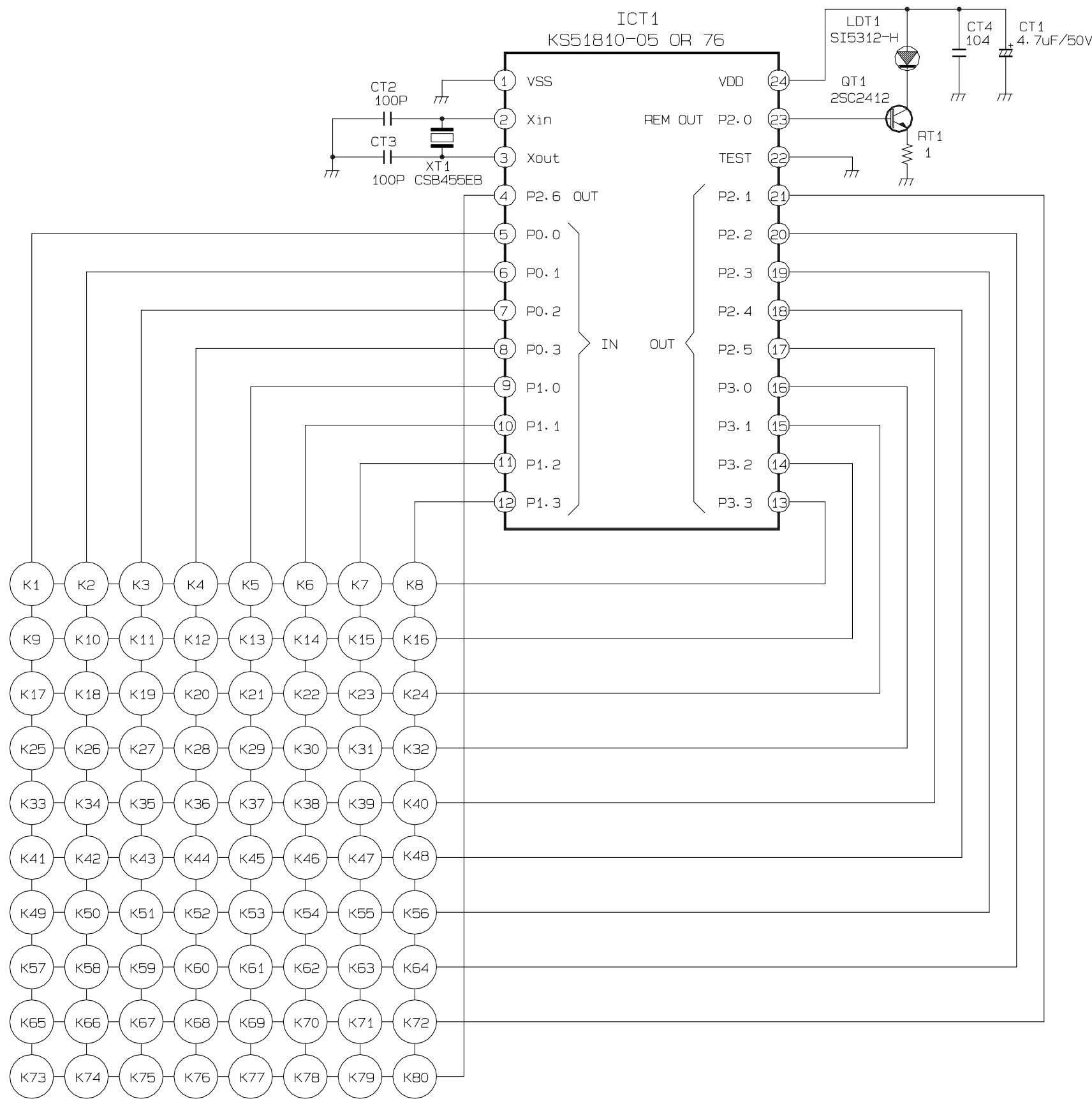
11-6 I/O



11-9 Function



11-11 Remote-Control



FUNCTION KEY			
K1	-	K41	REW
K2	TV/VCR	K42	PLAY
K3	POWER	K43	F.F
K4	REPEAT	K44	-
K5	-	K45	-
K6	ERASE	K46	-
K7	TEST (TEST ONLY)	K47	-
K8	INDEX	K48	-
K9	CH1 (LESSON)	K49	-
K10	CH 2 Δ	K50	CLEAR/RESET
K11	CH 3	K51	DISPLAY
K12	-	K52	MENU
K13	TRACKING UP	K53	SYSTEM (TEST ONLY)
K14	TRACKING DOWN	K54	-
K15	-	K55	-
K16	MARK	K56	-
K17	CH 4 ▷	K57	EJECT
K18	CH 5	K58	-
K19	CH 6 ◁	K59	AUDIO (OUTPUT SEL.)
K20	-	K60	-
K21	-	K61	-
K22	-	K62	-
K23	-	K63	PICTURE
K24	CLK/COUNTER (TEST ONLY)	K64	-
K25	CH 7	K65	-
K26	CH 8 ▽	K66	-
K27	CH 9	K67	-
K28	-	K68	-
K29	-	K69	-
K30	-	K70	-
K31	-	K71	SHUTTLE-
K32	-	K72	SHUTTLE+
K33	REC (OTR)	K73	-
K34	STOP	K74	CH 0
K35	P/STILL	K75	-
K36	SLOW-DOWN	K76	SLOW UP
K37	-	K77	-
K38	-	K78	-
K39	-	K79	SP/LP (TEST ONLY)
K40	-	K80	-