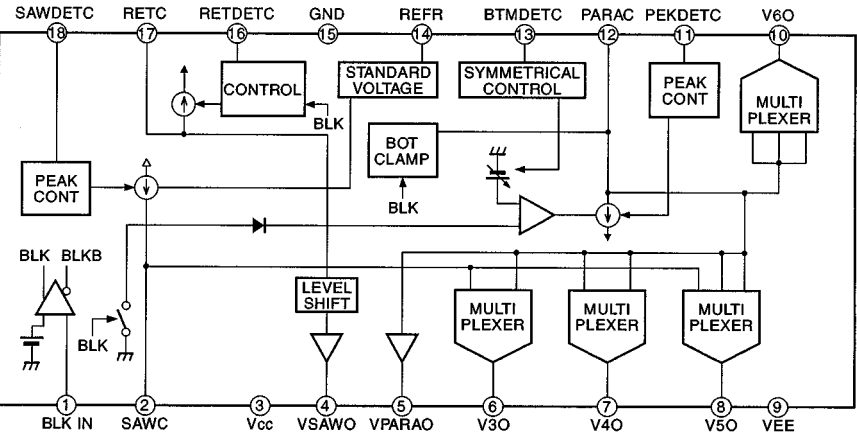
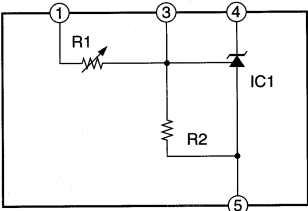


G BOARD : IC801, 802 PA0053B



G BOARD : IC651 DM-58



G BOARD

DIODE			TRANSISTOR		
D501	F-10	-	Q501	G-5	-
D502	F-9	-	Q502	F-5	-
D503	H-7	-	Q503	H-10	-
D504	F-10	-	Q504	I-11	-
D507	H-10	-	Q505	F-9	-
D508	G-6	-	Q506	H-10	-
D509	G-5	-	Q507	H-9	-
D510	G-4	-	Q651	D-4	-
D511	F-8	-	Q652	A-7	-
D513	H-3	-	Q653	A-7	-
D514	F-1	-	Q654	A-6	-
D515	I-1	-	Q655	A-7	-
D517	H-7	-	Q656	A-6	-
D519	H-10	-	Q657	D-5	-
D520	I-2	-	Q658	E-5	-
D521	H-4	-	Q659	A-7	-
D524	H-11	-	Q660	D-5	-
D527	F-9	-	Q661	E-4	-
D528	F-9	-	Q662	D-5	-
D602	B-3	-	Q802	H-13	-
D651	D-4	-	Q803	G-13	-
D652	D-4	-	Q804	G-13	-
D653	C-7	-	Q805	I-14	-
D654	C-7	-	Q809	B-12	-
D655	D-5	-	Q810	B-9	-
D656	C-6	-	IC		
D657	B-6	-	IC501	F-10	-
D658	B-6	-	IC601	A-4	-
D660	D-4	-	IC651	B-6	-
D661	E-6	-	IC652	C-8	-
D662	A-6	-	IC653	C-7	-
D664	A-7	-	IC654	E-4	-
D669	D-3	-	IC655	E-3	-
D670	A-7	-	IC801	F-14	-
D691	E-1	-	IC802	F-12	-
D692	E-2	-	IC803	H-14	-
D693	E-2	-	IC804	D-9	-
D694	E-1	-	IC805	H-12	-
D801	G-14	-	IC806	D-11	-
D802	G-14	-	IC808	D-13	-
D803	G-14	-	IC809	B-13	-
D804	G-14	-	IC810	B-10	-
D809	B-12	-	IC811	I-11	-
D810	B-9	-			
D820	F-14	-			
D828	H-14	-			
D829	I-13	-			
D835	D-11	-			
D840	I-13	-			
D842	I-13	-			
D845	I-13	-			
D846	I-13	-			
D847	H-11	-			
D848	G-12	-			

NOTE :

The circuit indicated as left contains high voltage of over 600 Vp-p. Care must be paid to prevent an electric shock in inspection or repairing.

[POWER SUPPLY, HV, RGB CONV, H/V WAVE GNE]

- G Board -

