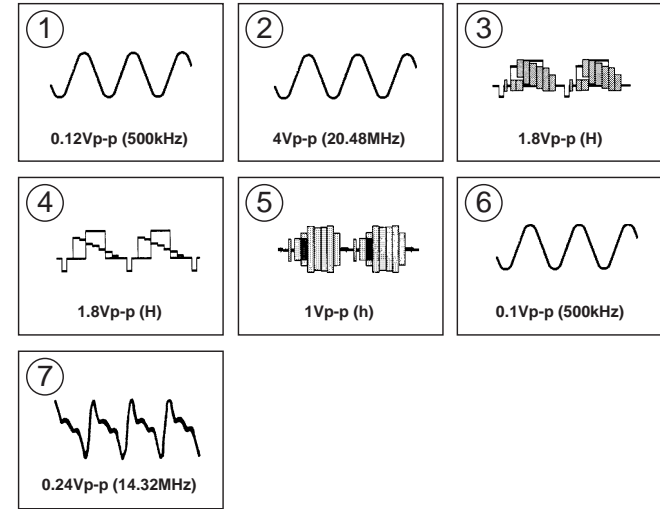


• PT BOARD WAVEFORMS



PT BOARD IC VOLTAGE LIST

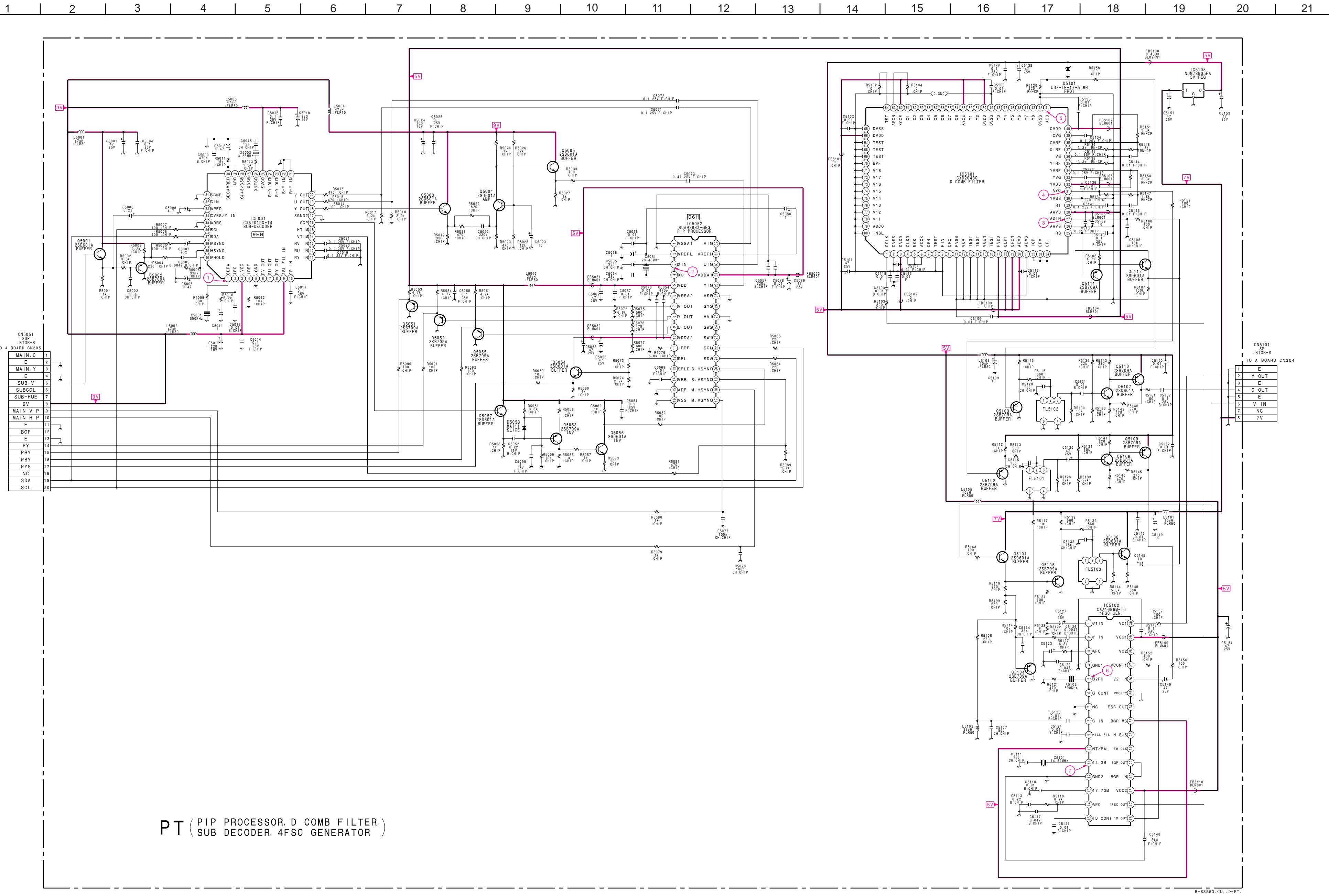
REF.	Pin NO.	VOL.	REF.	Pin NO.	VOL.
IC5001	①	2.3	IC5101	⑩	GND
	②	4.1		⑪	GND
	③	9.0		⑫	4.9
	④	0		⑬	4.9
	⑤	GND		⑭	4.9
	⑥	9.0		⑮	4.9
	⑦	1.0		⑯	3.6
	⑧	3.6		⑰	GND
	⑨	4.5		⑱	4.6
	⑩	4.6		⑲	0.1
	⑪	0.7		⑳	0.7
	⑫	GND		㉑	1.5
IC5052	⑬	2.6	IC5102	⑳	1.5
	⑭	2.9		㉑	4.9
	⑮	2.9		㉒	0.9
	⑯	GND		㉓	4.9
	⑰	0.9		㉔	0.9
	⑱	GND		㉕	2.9
	㉑	0.9		㉖	1.8
	㉒	0		㉗	0.9
	㉓	3.3		㉘	0
	㉔	3.6		㉙	0
	㉕	0		㉚	4.8
	㉖	4.8		㉛	0.9
IC5101	①	4.1	IC5102	①	2.2
	②	3.3		②	2.0
	③	GND		③	2.5
	④	0.7		④	1.1
	⑤	0.1		⑤	0
	⑥	0.5		⑥	4.8
	⑦	GND		⑦	3.1
	⑧	4.8		⑧	4.4
	⑨	2.2		⑨	2.4
	⑩	2.0		⑩	2.5
	⑪	1.6		⑪	1.1
	⑫	4.9		⑫	0

*All voltage are in V.
*Pin numbers which are not described are not used.

PT BOARD TRANSISTOR VOLTAGE LIST

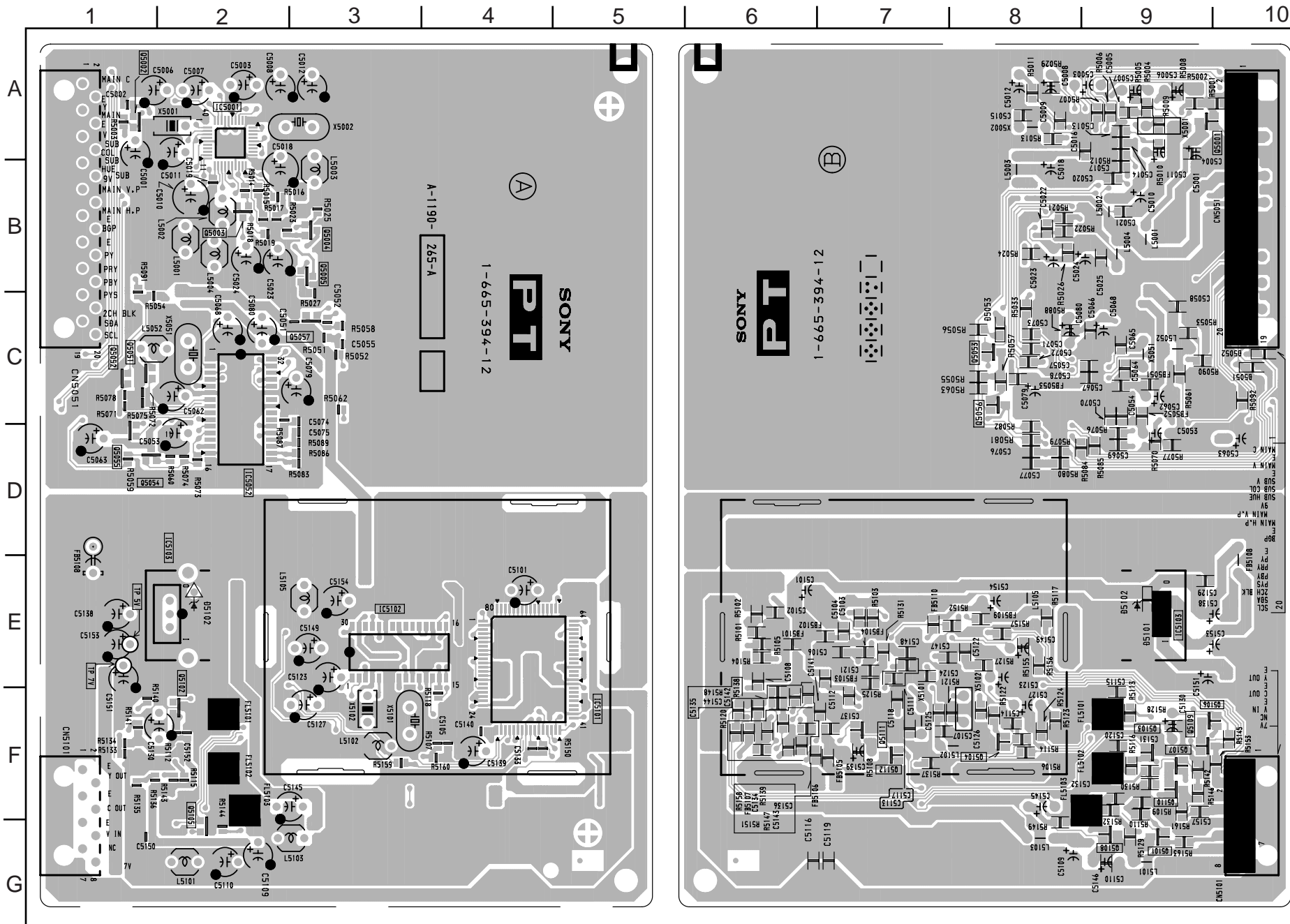
REF.	VOL.	REF.	VOL.
Q5001	B 6.5	Q5101	B 2.5
	E 5.8		E 1.9
	C 8.8		C 5.0
Q5002	B 6.5	Q5102	E 1.8
	C GND		C GND
	B 2.8		B 0.9
Q5003	E 2.2	Q5103	E 1.6
	C 8.5		C GND
	B 2.9		B 0.8
Q5004	E 2.2	Q5104	E 1.5
	C 4.1		C GND
	B 4.1		B 1.9
Q5005	E 3.5	Q5105	E 2.6
	B 0.4		B 2.4
	C GND		C GND
Q5006	E 1.0	Q5106	E 1.7
	C GND		C 4.4
	B 0		B 2.4
Q5007	E 0.5	Q5107	E 1.7
	C GND		C 4.4
	B *		B 2.3
Q5008	E 0	Q5108	E 1.7
	C *		C 5.0
	B 0		B 4.4
Q5009	E 0	Q5109	E 5.0
	C 4.9		C 2.0
	B 0.5		B 4.4
Q5010	E 1.1	Q5110	E 5.0
	C GND		C 2.0
	B *		B 1.5
Q5011	E *	Q5111	E 2.1
	C *		B 2.1
	B 0		E 1.5
Q5012	E 4.9	Q5112	E 1.5
	C 4.9		C 4.9
	B *		C 4.9

All voltages are in V.



PT (PIP PROCESSOR, D COMB FILTER,
SUB DECODER, 4FSC GENERATOR)

- PT Board -



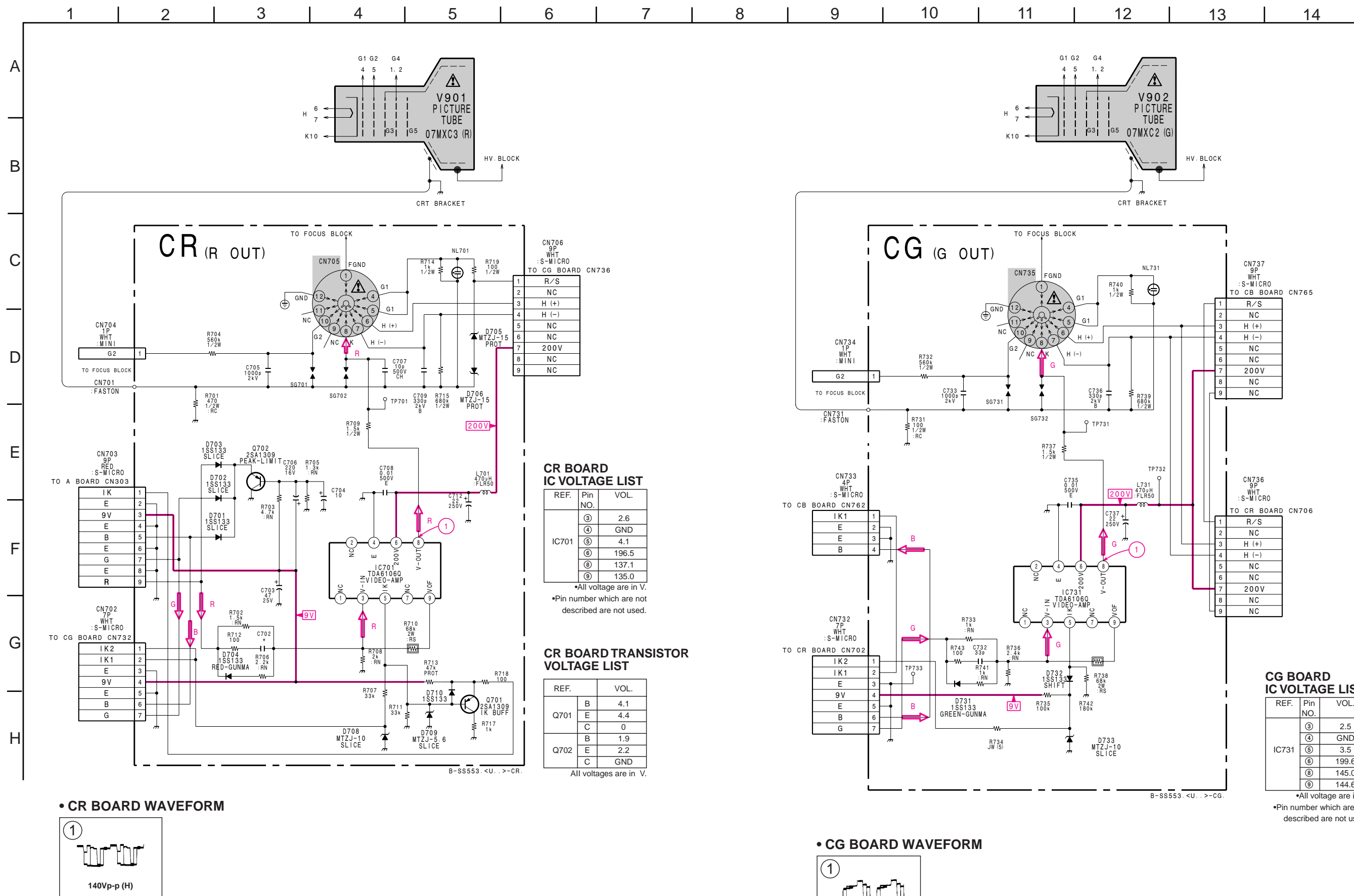
< Component Side >

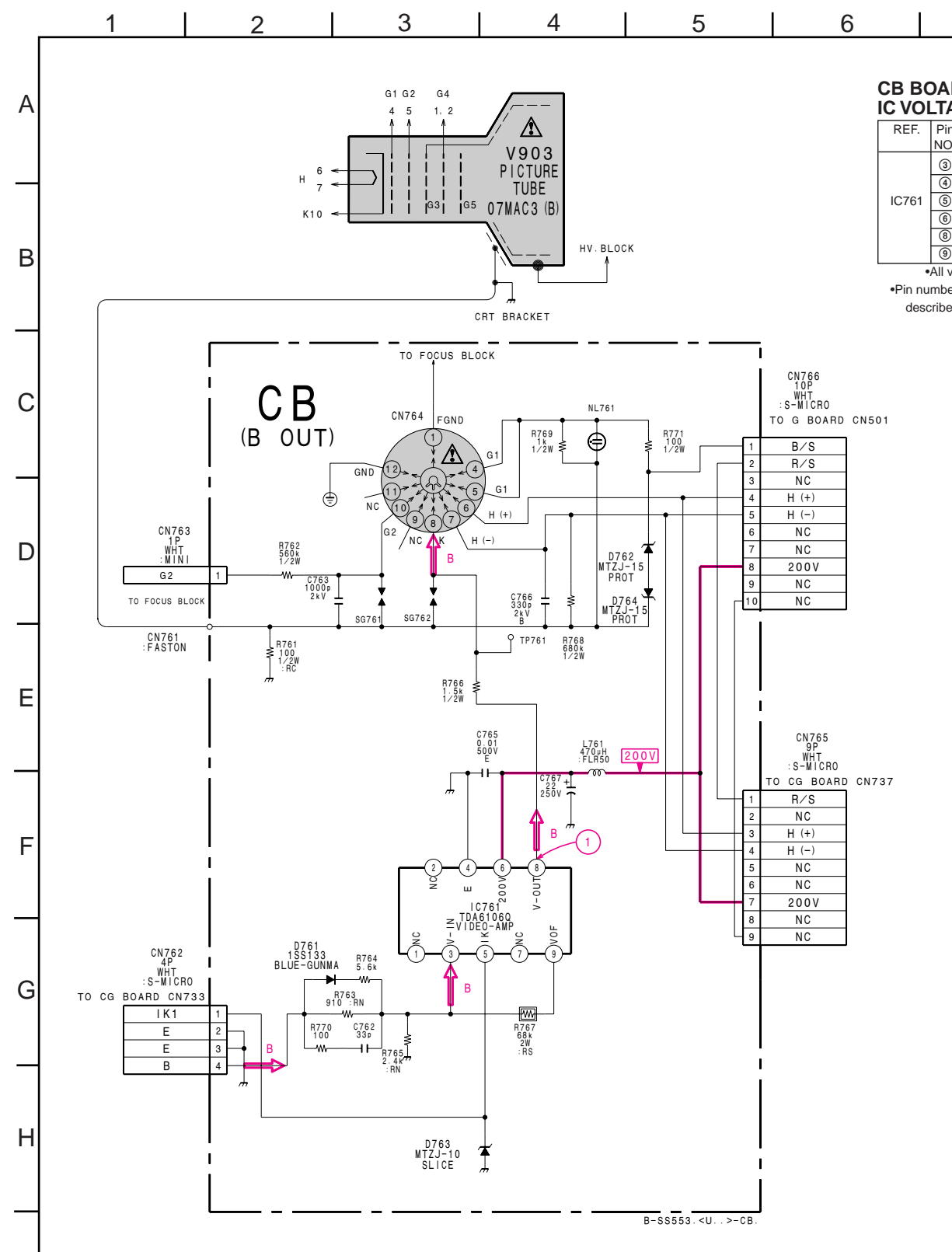
< Conductor Side >

PT BOARD		
DIODE		*
D5053	C-8	③
D5101	E-9	③
TRANSISTOR		*
Q5001	A-10	①
Q5002	A-1	②
Q5003	B-2	②
Q5004	B-3	②
Q5005	B-3	②
Q5051	C-1	②
Q5052	C-1	②
Q5053	C-8	①
Q5054	D-1	②
Q5055	D-1	②
Q5056	C-8	①
Q5057	C-3	②
Q5101	G-9	①
Q5102	F-2	②
Q5103	F-9	①
Q5104	F-8	①
Q5105	G-2	②
Q5106	F-10	①
Q5107	F-10	①
Q5108	G-9	①
Q5109	F-9	①
Q5110	F-9	①
Q5111	H-7	①
Q5112	H-7	①
IC		
IC5001	A-2	
IC5052	C-2	
IC5101	E-4	
IC5102	E-3	
IC5103	E-2, E-9	

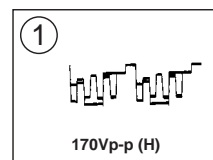
NOTE:

- : Pattern from the side which enables seeing.
- : Pattern of the rear side.



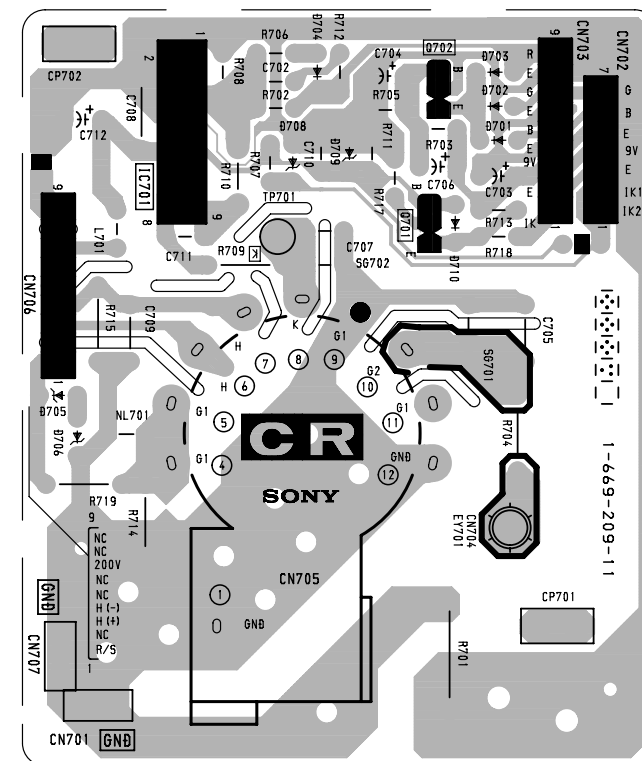


• CB BOARD WAVEFORM

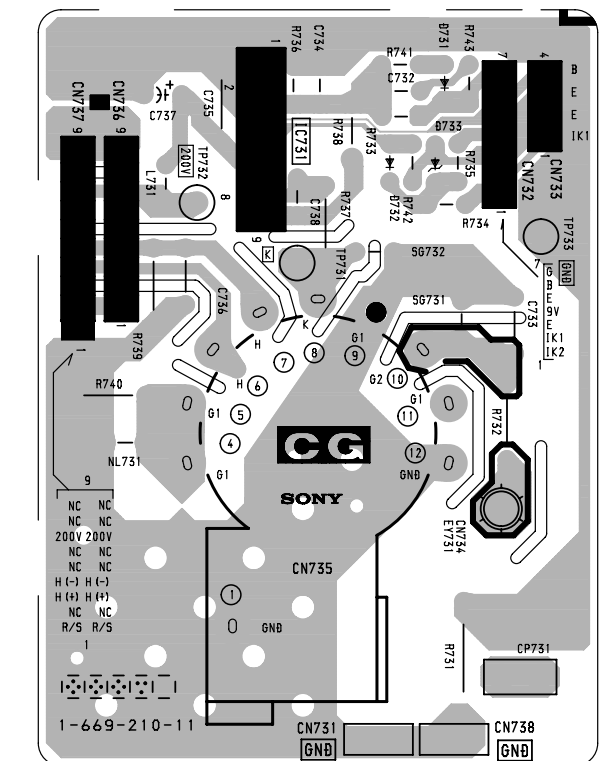


CR [R OUT] **CG** [G OUT] **CB** [B OUT]

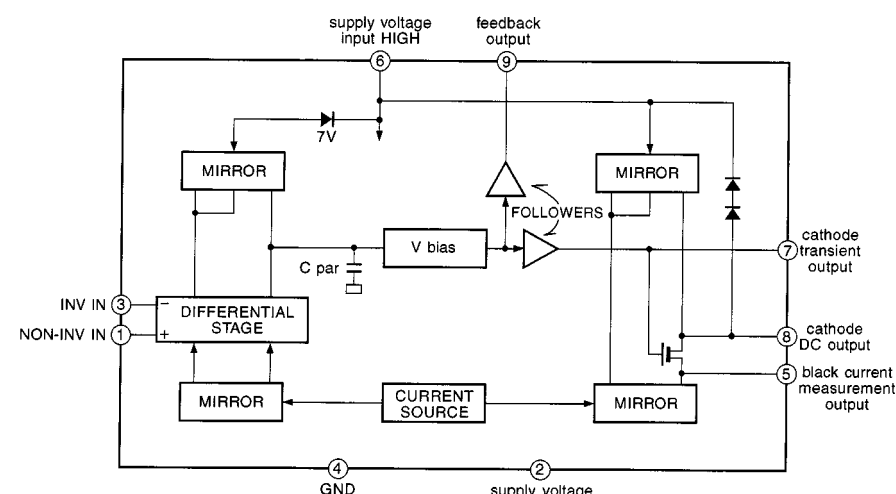
– CR Board –



– CG Board –



CR BOARD : IC701 TDA6106Q
CG BOARD : IC701 TDA6106Q
CB BOARD : IC701 TDA6106Q



– CB Board –

