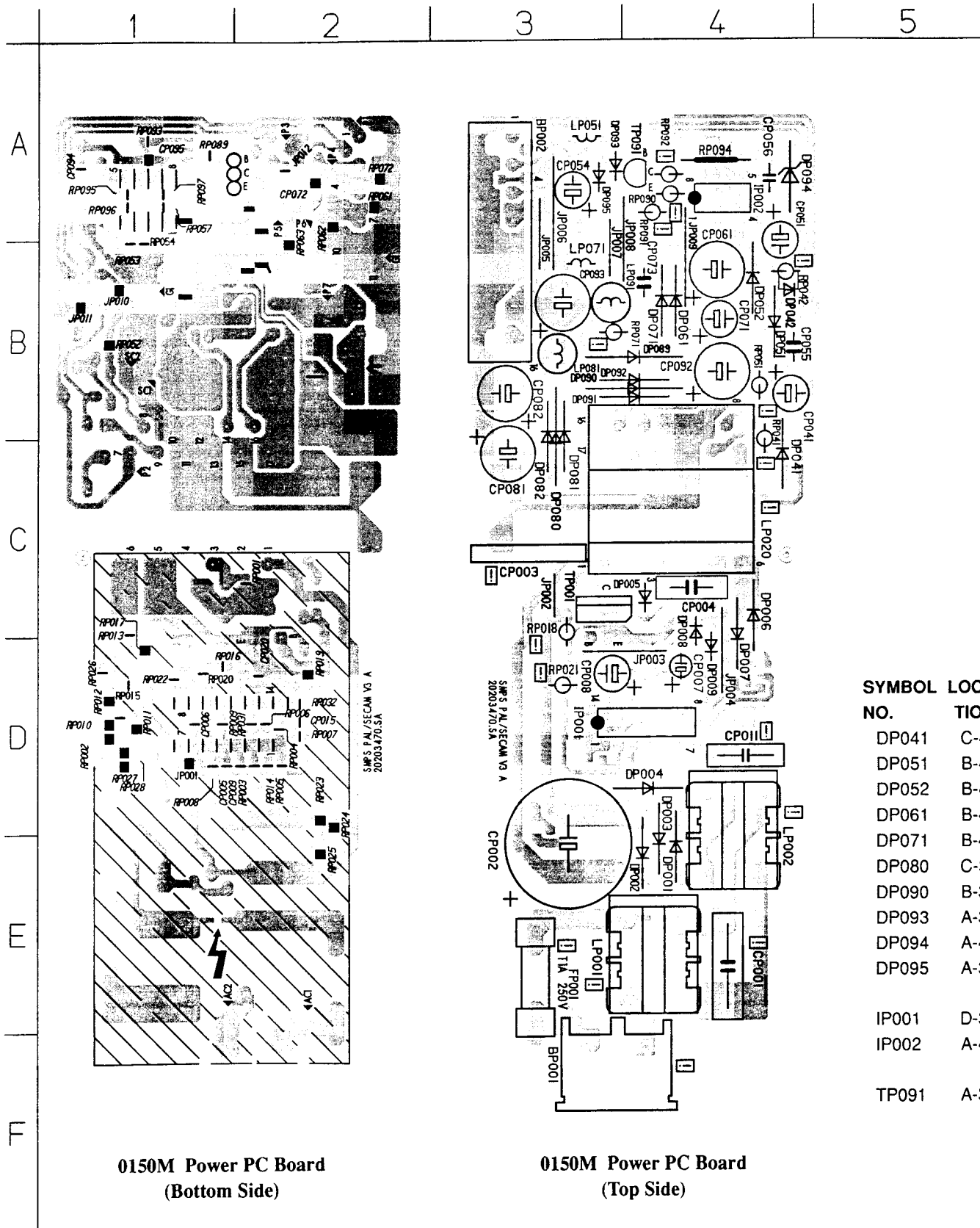




9. PC BOARDS

9-1. Power PC Board



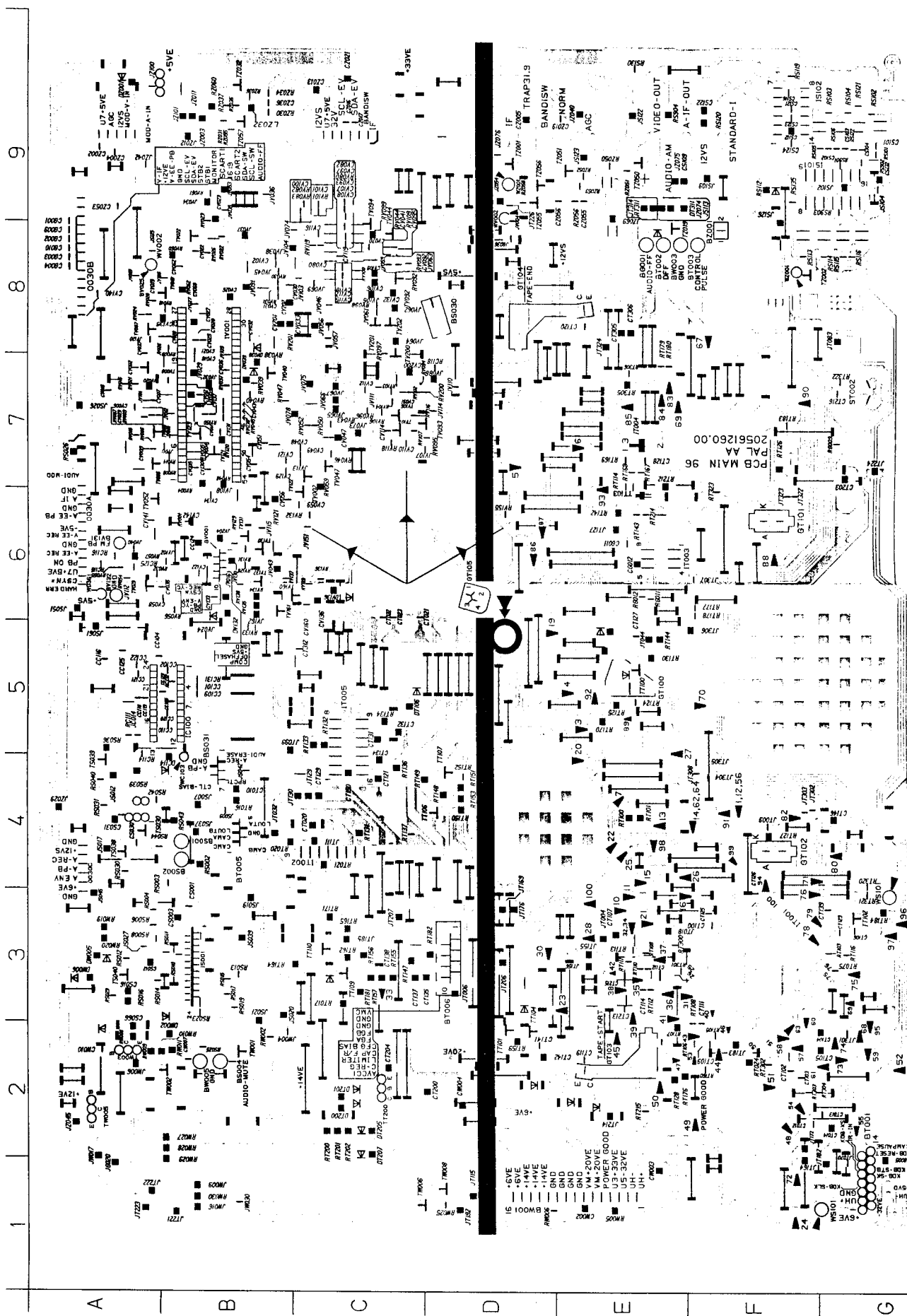
0150M Power PC Board
(Bottom Side)

0150M Power PC Board
(Top Side)

9-2. Main (PIF, Servo/Logic, Video, Audio) PC Board

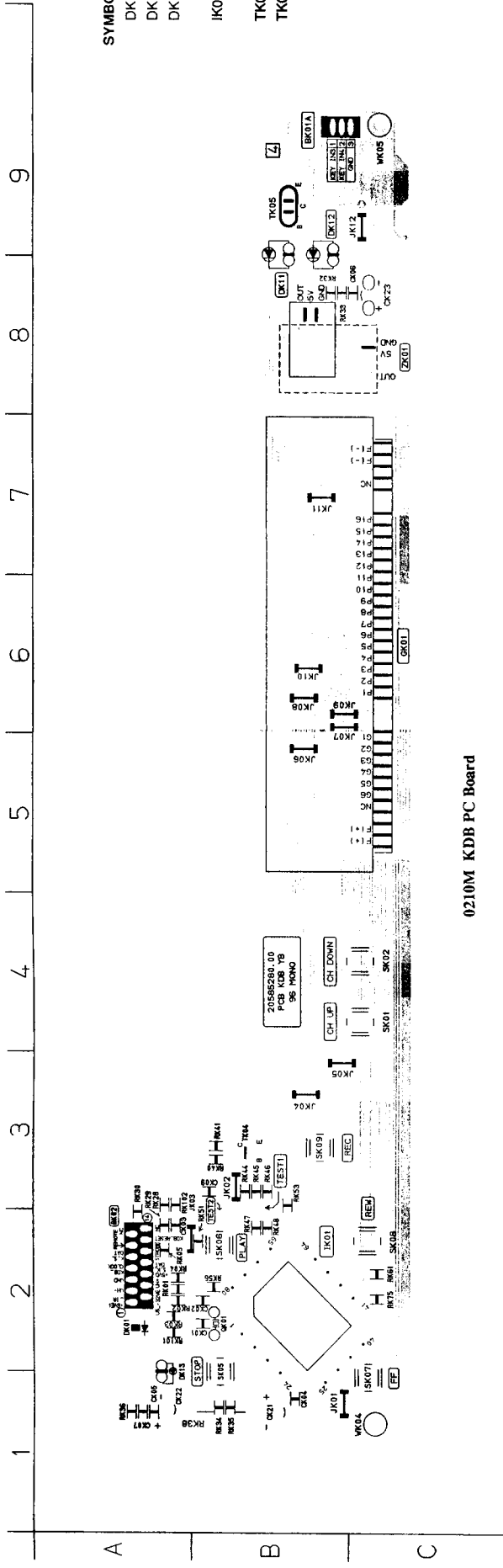
SYMBOL NO.	LOCATION	SYMBOL NO.	LOCATION
DT200	C-2	TV094	C-9
DT201	C-2	TV106	C-7
DT207	C-2	TV107	C-7
DW002	A-2	TV121	B-7
DW005	A-3	TV123	B-7
DW006	A-3	TV130	B-6
DZ001	A-9	TV131	B-6
GT100	E-5	TW001	B-2
GT101	F-6	TW002	B-2
GT102	F-4	TW003	A-2
GT103	E-2	TW005	A-2
GT104	D-8	TW006	C-1
		TW008	D-1
IS001	B-3	TZ032	B-9
IT001	F-3	TZ050	E-9
IT002	C-4	TZ051	E-9
IT003	E-6	TZ057	B-9
IT004	E-7		
IT005	C-5		
IV001	B-8		
TS030	A-4		
TS038	A-4		
TS039	A-4		
TS040	A-3		
TT100	E-5		
TT101	D-2		
TT102	G-3		
TT104	D-3		
TT106	C-4		
TT107	D-4		
TT109	C-3		
TT110	C-3		
TV005	A-7		
TV006	A-7		
TV008	A-7		
TV022	B-8		
TV029	A-6		
TV040	B-7		
TV044	C-9		
TV047	C-7		
TV052	A-6		
TV092	C-8		
TV093	D-7		

For Service Manuals Contact
MAURITRON TECHNICAL SERVICES
 8 Cherry Tree Rd, Chinnor
 Oxon OX9 4QY
 Tel:- 01844-351694 Fax:- 01844-352554
 Email:- enquiries@mauritron.co.uk



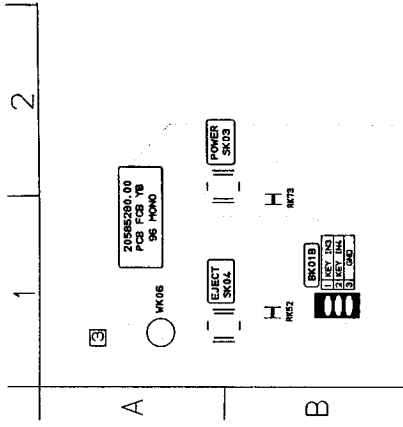
0005M Main (PIF, Servo/Logic, Video, Audio) PC Board

9-3. KDB PC Board



0210M KDB PC Board

9-4. FCB PC Board



0212M FCB PC Board

For Service Manuals Contact
MAURITRON TECHNICAL SERVICES
8 Cherry Tree Rd, Chinnor
Oxon OX9 4QY
Tel: 01844-351694 Fax: 01844-352554
Email: enquiries@mauratron.co.uk

This page is not printed.

SECTION 4

PARTS LIST

SAFETY PRECAUTION

The parts identified by \triangle mark are critical for safety. Replace only with part number specified.

The mounting position of replacement is to be identical with originals.

The substitute replacement parts which do not have the same safety characteristics as specified in the parts list may create shock, fire or other hazards.

NOTICE

The part number must be used when ordering parts in order to assist in processing, be sure to include the model number and description.

Parts marked # are of chip type and mounted on original PC boards.

However, when they are placed for servicing works, use discrete parts listed on the parts list.

ABBREVIATIONS

1. Integrated circuit (IC)

2. Capacitor (Cap)

- Capacitance Tolerance (for Nominal Capacitance more than 10pF)

Symbol	B	C	D	F	G	J	K	M	N
Tolerance %	± 0.1	± 0.25	± 0.5	± 1	± 2	± 5	± 10	± 20	± 30

Symbol	P	Q	T	U	V	W	X	Y	Z
Tolerance %	+100 0	+30 -10	+50 -10	+75 -10	+20 -10	+100 -10	+40 -20	+150 -10	+80 -20

Ex. 10 μ F J = 10 μ F \pm 5%

- Capacitance Tolerance (for Nominal Capacitance 10pF or less)

Symbol	B	C	D	F	G
Tolerance pF	± 0.1	± 0.25	± 0.5	± 1	± 2

Ex. 10pF G = 10pF \pm 2pF

3. Resistor (Res)

- Resistance tolerance

Symbol	B	C	D	F	G	J	K	M
Tolerance %	± 0.1	± 0.25	± 0.5	± 1	± 2	± 5	± 10	± 20

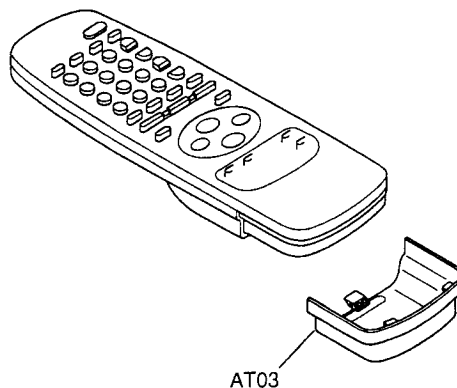
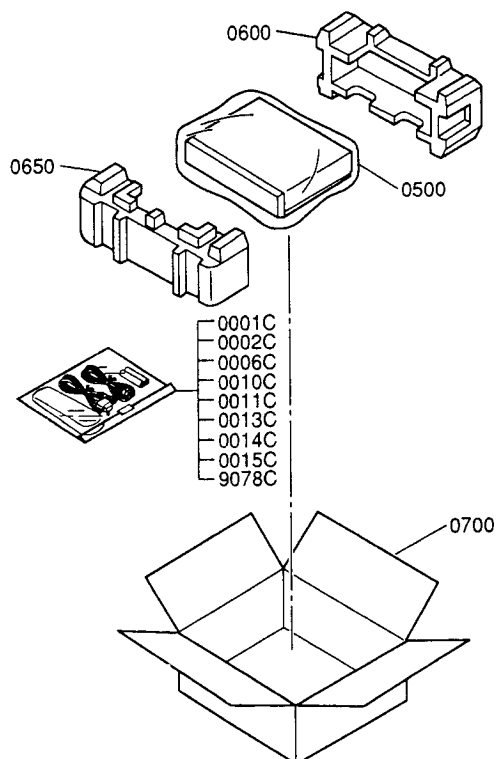
Ex. 470 Ω J = 470 Ω \pm 5%

For Service Manuals Contact
MAURITRON TECHNICAL SERVICES
8 Cherry Tree Rd, Chinnor
Oxon OX9 4QY
Tel:- 01844-351694 Fax:- 01844-352554
Email:- enquiries@mauritron.co.uk

4. EXPLODED VIEWS

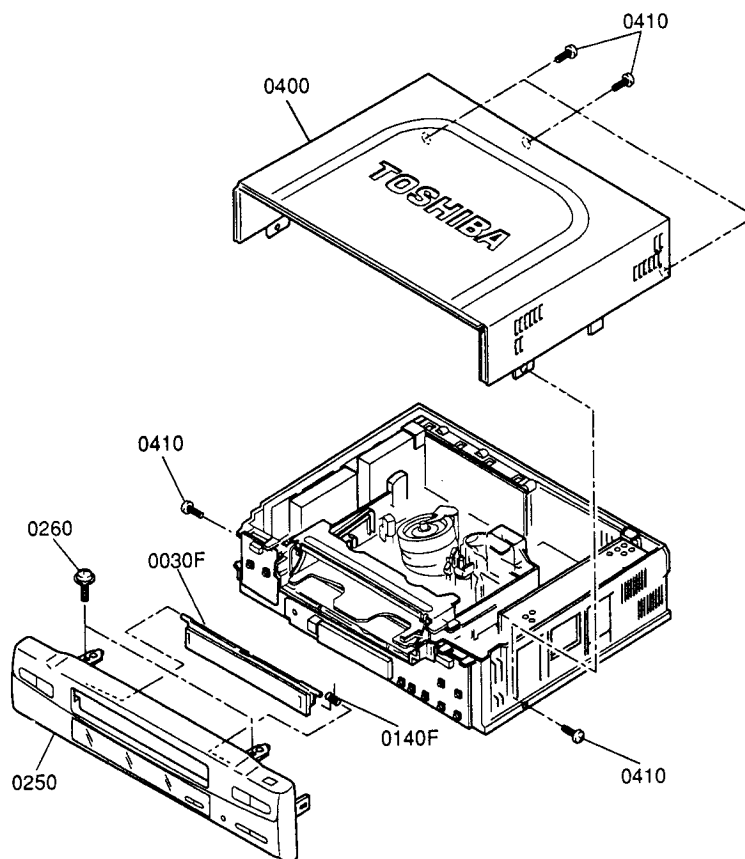
4-2. Remote Control Unit

4-1. Packing Assembly

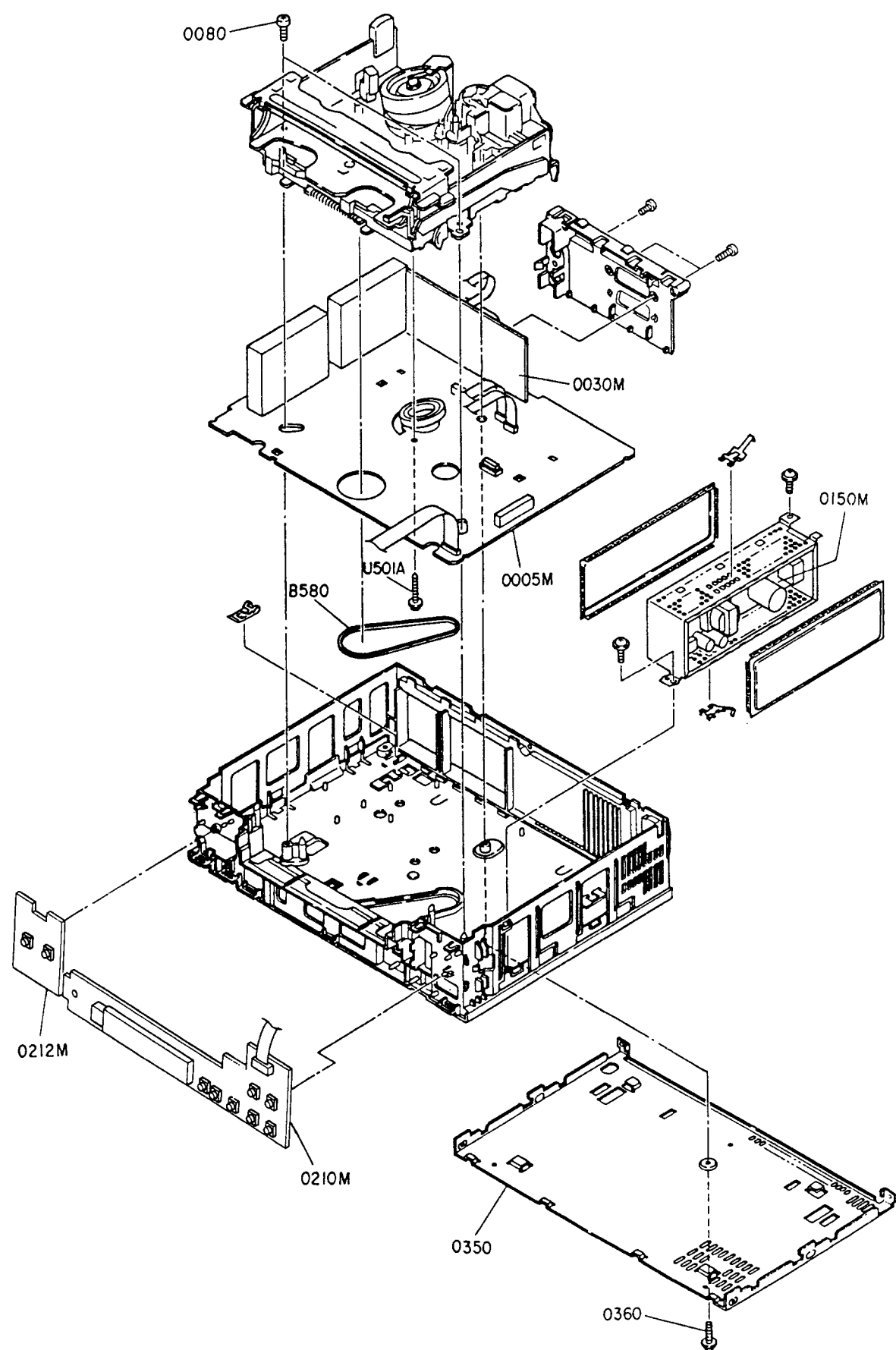


For Service Manuals Contact
MAURITRON TECHNICAL SERVICES
8 Cherry Tree Rd, Chinnor
Oxon OX9 4QY
Tel:- 01844-351694 Fax:- 01844-352554
Email:- enquiries@mauritron.co.uk

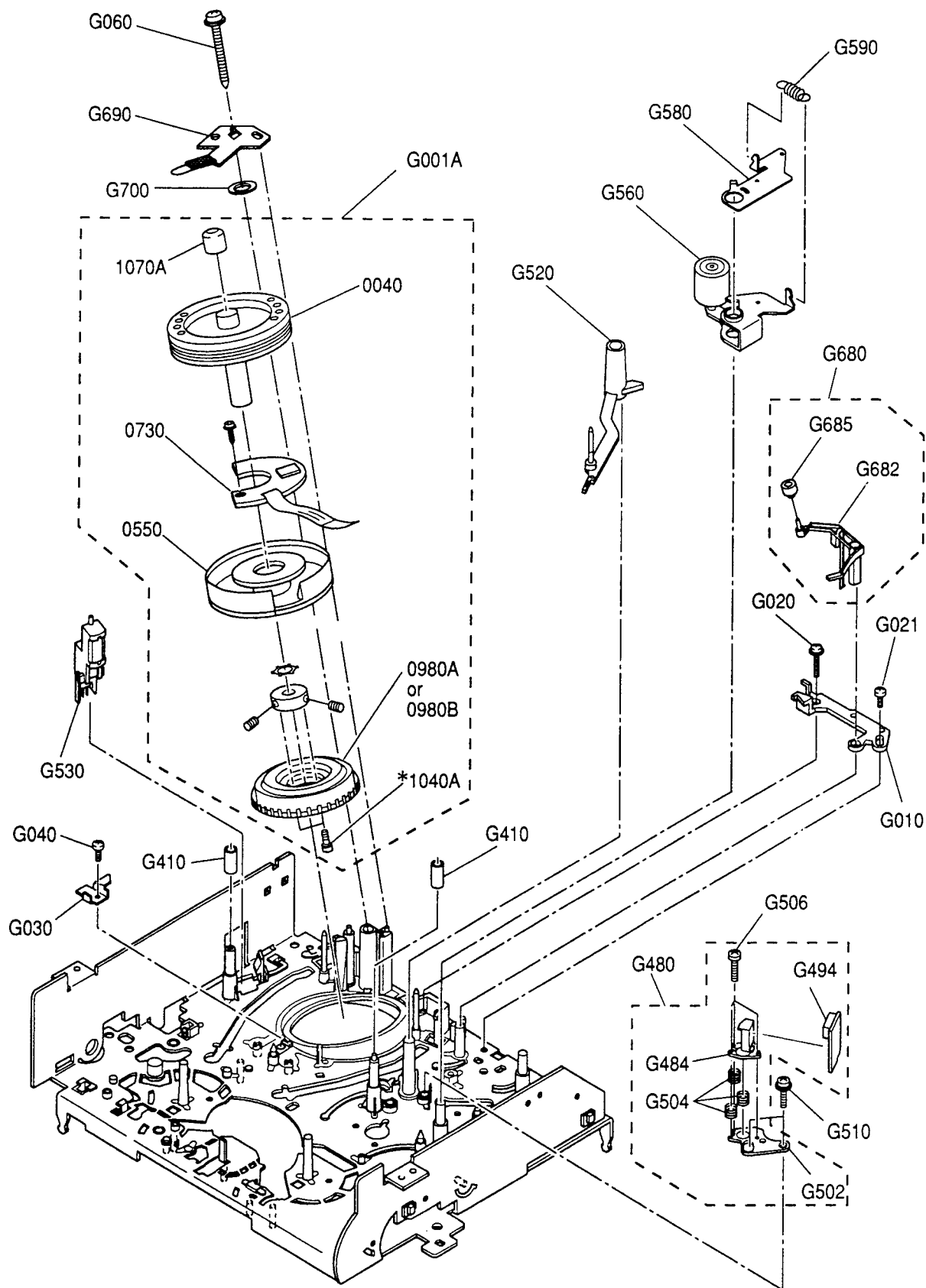
4-3. Cabinet Assembly



4-4. Chassis Assembly

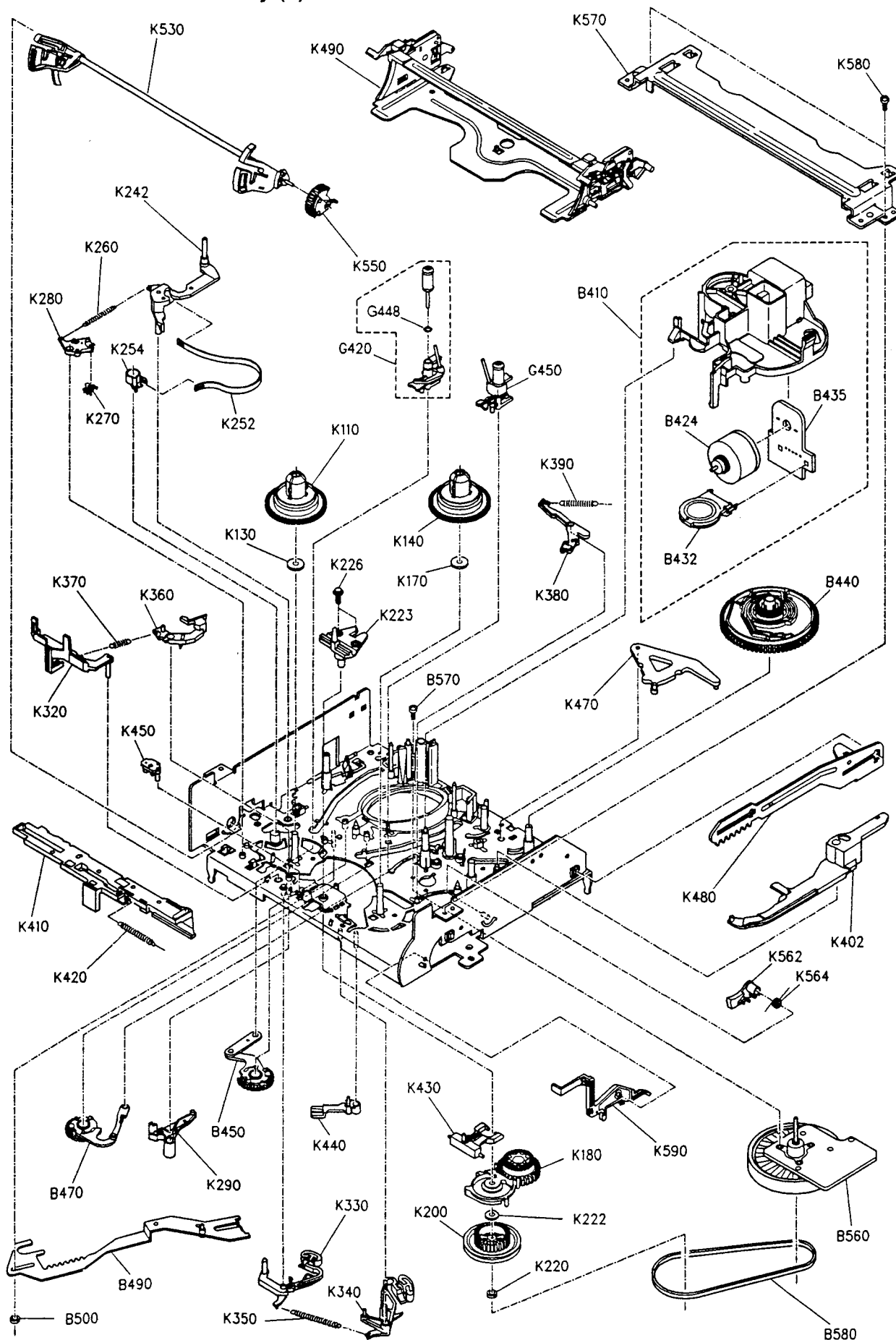


4-5. Mechanism Assembly (1)



*:1040A is used only for the screw securing type rotor.

4-6. Mechanism Assembly (2)



4-5

For Service Manuals Contact
MAURITRON TECHNICAL SERVICES
 8 Cherry Tree Rd, Chinnor
 Oxon OX9 4QY
 Tel:- 01844-351694 Fax:- 01844-352554
 Email:- enquiries@mauriton.co.uk

5. PARTS LIST

LOCATION NUMBER	PART NUMBER	DESCRIPTION
- MECHANICAL PARTS -		
△0001C	70061686	Owners Manual English
0010C	70012584	Remote Control Unit
0013C	70011442	Cable
△0014C	70012604	Power Cord
0030F	70051832	Cassette Door
0040	70903992	Upper Cylinder Assy
0140F	70051372	Spring
△0250	70051827	Front Panel
0350	70051141	Bottom Plate
△0400	70051620	Top Cover
0550	70031714	Lower Cylinder Assy
0600	70061499	Packing(Front)
0650	70061500	Packing(Rear)
0700	70917888	Case
0980A	70031561	Rotor(Screw Securing Type)
0980B	70031620	Rotor(Press Fit Securing Type)
1040A	70031567	Screw
1070A	70031559	Ground Cap
AT03	70107025	Case(Battery)
B410	70031394	Loading Drive Assy
B424	70031396	Loading Motor Sub Assy
B432	70031401	Cam Switch
B435	70031402	Loading Drive Unit
B440	70051147	Cam Gear
B450	70031404	S Loading Assy
B470	70031408	T Loading Assy
B490	70031412	Loading Slider Assy
B560	70031744	Capstan Motor Assy
B570	70070028	Screw, 2. 6x6mm
B580	70031442	Reel Belt
G001A	70031542	Cylinder Assy
G010	70031444	Plate(Cylinder)
G020	70031643	Screw 2. 6x5mm
G021	70031644	Screw 2. 6x5mm
G030	70031445	Plate(Cylinder)
G040	70031644	Screw 2. 6x5mm
G060	70031449	Screw
G410	70031348	Guide Sleeve
G420	70031349	S Slider Assy
G448	70031505	O Ring
G450	70031360	T Slider Assy
G480	70031512	ACE Head Assy
G484	70031511	ACE Sub Base Assy
G504	70031508	Spring
G520	70031370	No. 9 Guide Lever Assy
G530	70031443	FE Head
G560	70031384	Pinch Lever Assy
G580	70031390	Pinch Drive Assy
G590	70031392	Spring
G680	70031493	Cleaner Lever Assy
G690	70031540	Ground Brush
K110	70031328	S Reel Assy
K130	70031334	Washer
K140	70031335	T Reel Assy
K170	70031334	Washer
K180	70031339	Idle Arm Assy
K200	70031345	Center Gear Pulley
K220	70031503	Washer
K222	70031527	Washer
K223	70031454	Center Post Assy
K242	70031374	Tension Lever Sub Assy
K252	70031376	Band Brake Sub Assy
K254	70031377	Band Holder
K260	70031660	Spring
K270	70031379	Hook Lever
K280	70031380	Hook Lever
K290	70031381	Tension Drive Lever
K320	70031466	Rec Inhibit Lever
K330	70031420	S Main Brake Assy
K340	70031421	T Main Brake Assy
K350	70031422	Spring
K360	70031469	S Soft Brake Lever

LOCATION NUMBER	PART NUMBER	DESCRIPTION
K370	70031423	Spring
K380	70031424	T Soft Brake Assy
K390	70031426	Spring
K402	70031471	Drive Lever
K410	70031427	Cam Slider
K420	70031428	Spring
K430	70031472	Idle Up Down Lever
K440	70031473	Idle Kick Lever
K450	70031476	Idle Centering Lever
K470	70031477	Cam Lever
K480	70031430	FL Drive Slider
K490	70031431	Cassette Holder Assy
K530	70031415	Drive Arm Assy
K550	70051150	Drive Lever Gear
K562	70031482	Arm Brake Lever
K564	70031440	Spring
K570	70031441	Top Bracket
K590	70031483	Door Open Lever
U501A	70070070	Screw

LOCATION NUMBER	PART NUMBER	DESCRIPTION
- ELECTRICAL PARTS -		
0100	70095063	Main Assy
0005M		P C Board Assy Main
- INTEGRATED CIRCUITS -		
IS001	70011973	IC BA7795LS
IT001	70012656	IC TMP90CS74DF-7824
IT002	70011888	IC TA7291S
IT003	70011892	IC ST24C04
IT004	70011808	IC PST7032MT
IT005	70011887	IC TB6515AP
IV001	70012632	IC TA8892BN
IV100	70012633	IC TL8850AP
- TRANSISTORS -		
GT103	70010181	Transistor, Photo PT493F
GT104	70010181	Transistor, Photo PT493F
TS030	70010331	Transistor BC847B
TS038	A6004040	Transistor, Chip RN1404
TS039	70010150	Transistor BC848B
TS040	A6004040	Transistor, Chip RN1404
TT100	70010150	Transistor BC848B
TT101	70010942	Transistor BC848
TT102	70010947	Transistor BC858
TT104	70010942	Transistor BC848
TT106	A6004040	Transistor, Chip RN1404
TT107	A6004040	Transistor, Chip RN1404
TT109	A6004020	Transistor, Chip RN1402
TT110	70010332	Transistor BC857B
TT111	70011386	Transistor 2SA1020-Y
TT200	70010131	Transistor BC337-40
TV005	A6004020	Transistor, Chip RN1402
TV006	A6335470	Transistor, Chip 2SC2712-Y
TV008	A6541130	Transistor, Chip 2SA1162-Y
TV010	A6004040	Transistor, Chip RN1404
TV022	70010150	Transistor BC848B
TV029	70010150	Transistor BC848B
TV040	70010150	Transistor BC848B
TV044	A6335470	Transistor, Chip 2SC2712-Y
TV047	70010947	Transistor BC858
TV052	70010947	Transistor BC858
TV092	A6335470	Transistor, Chip 2SC2712-Y
TV093	A6335470	Transistor, Chip 2SC2712-Y
TV094	A6541130	Transistor, Chip 2SA1162-Y
TV106	A6335470	Transistor, Chip 2SC2712-Y
TV107	A6335470	Transistor, Chip 2SC2712-Y
TV121	A6004040	Transistor, Chip RN1404
TV123	A6335470	Transistor, Chip 2SC2712-Y
TV130	70010942	Transistor BC848
TV131	70010947	Transistor BC858
TV137	A6004020	Transistor, Chip RN1402
TW001	70010942	Transistor BC848
TW002	A6014030	Transistor, Chip RN2403
TW003	A6325549	Transistor 2SC2236-Y
TW005	A6325549	Transistor 2SC2236-Y
TW006	70010947	Transistor BC858
TW008	A6004050	Transistor, Chip RN1405
TZ032	70010947	Transistor BC858
TZ050	70010150	Transistor BC848B
TZ051	70010947	Transistor BC858
TZ057	70010947	Transistor BC858
TZ060	70010131	Transistor BC337-40
- DIODES -		
DT102	70012342	Diode 1N4001
DT103	70012342	Diode 1N4001
DT104	70012342	Diode 1N4001
DT107	70012342	Diode 1N4001
DT108	70012342	Diode 1N4001
DT200	70011968	Diode, Zener ZMM5. 1
DT201	70010965	Diode LL4448
DT202	70012342	Diode 1N4001
DT203	70012342	Diode 1N4001
DT204	70010153	Diode 1N4148
DT205	70010342	Diode, Chip LL4148

LOCATION NUMBER	PART NUMBER	DESCRIPTION
DT311	70010342	Diode, Chip LL4148
DV038	70010342	Diode, Chip LL4148
DV039	70010342	Diode, Chip LL4148
DV132	70010342	Diode, Chip LL4148
DV136	70010965	Diode LL4448
DW001	70011967	Diode, Zener ZPD12
DW002	70010965	Diode LL4448
DW005	70011968	Diode, Zener ZMM5. 1
DW006	70010965	Diode LL4448
DW007	70012342	Diode 1N4001
DW008	70012342	Diode 1N4001
DZ001	70012631	Diode, Zener ZMM5. 6
GT100	70010180	Diode, LED GL451V
- COILS -		
LS019	23237729	Coil, Peaking TRF4822AP
LS022	23237729	Coil, Peaking TRF4822AP
LS030	70011369	Transformer
LT103	23238710	Coil, Peaking TRF4220AJ
LT105	70010920	Coil, Peaking
LT106	70011953	Coil, Peaking
LV009	23289181	Coil, Peaking TRF4181AF
LV010	70012096	Coil, Peaking
LV060	70012095	Coil, Peaking
LV103	23289101	Coil, Peaking TRF4101AF
LV104	23289101	Coil, Peaking TRF4101AF
LV105	23238705	Coil, Peaking TRF4560AJ
LV131	70012628	Coil, Peaking
LZ002	70012629	Coil, Peaking
LZ051	70010924	Coil, Peaking
- CAPACITORS -		
CG011	70041873	Cap, Chip 100pF K
CG012	70041868	Cap, Chip 100pF K 50V
CS001	70041916	Cap, Chip 1.5nF K 50V
CS002	70040738	Cap, Electrolytic 4.7μF 25V
CS003	70041155	Cap, Chip 1.5nF J 50V
CS004	70041869	Cap, Electrolytic 6.8μF M 16V
CS005	24633220	Cap, Electrolytic 22μF M 16V
CS006	24591103	Cap, Plastic 0.01μF J 50V
CS007	70040415	Cap, Electrolytic 47μF M 16V
CS012	70041009	Cap, Chip 220nF Z 50V
CS014	24797100	Cap, Electrolytic 10μF M 50V
CS016	70041009	Cap, Chip 220nF Z 50V
CS021	24797100	Cap, Electrolytic 10μF M 50V
CS022	24797100	Cap, Electrolytic 10μF M 50V
CS023	24591473	Cap, Plastic 0.047μF J 50V
CS024	70041632	Cap, Plastic 180nF J 50V
CS030	70041596	Cap, Chip 10nF K 50V
CS031	70041490	Cap, Chip 2.7nF M 50V
CS033	70040053	Cap, Plastic 56nF J 63V
CS034	24214221	Cap, Ceramic 220pF K 500V
CS036	24636010	Cap, Electrolytic 1μF M 50V
CS038	24794101	Cap, Electrolytic 100μF M 16V
CS065	70041411	Cap, Plastic 12nF J 63V
CS066	70041625	Cap, Chip 47nF M 25V
CS119	70040738	Cap, Electrolytic 4.7μF 25V
CT010	24285222	Cap, Chip 2200pF K 50V
CT011	70041037	Cap, Electrolytic 47μF M 16V
CT012	70041118	Cap, Chip 220pF J 50V
CT013	70041118	Cap, Chip 220pF J 50V
CT020	70040730	Cap, Chip 100nF M 25V
CT021	70041596	Cap, Chip 10nF K 50V
CT022	70041596	Cap, Chip 10nF K 50V
CT023	70041596	Cap, Chip 10nF K 50V
CT100	70041328	Cap, Chip 100nF Z 25V
CT102	24774470	Cap, Chip 47pF J 50V
CT103	24774470	Cap, Chip 47pF J 50V
CT104	70041929	Cap, Chip 3.3pF C 50V
CT108	70041037	Cap, Electrolytic 47μF M 16V
CT109	24774101	Cap, Chip 100pF J 50V
CT110	70041037	Cap, Electrolytic 47μF M 16V
CT111	24774101	Cap, Chip 100pF J 50V
CT112	70040245	Cap, Ceramic, Chip 150pF J 50V
CT116	70041054	Cap, Electrolytic 1μF M 50V
CT117	70041054	Cap, Electrolytic 1μF M 50V
CT119	70040247	Cap, Ceramic, Chip 1nF J 50V

LOCATION NUMBER	PART NUMBER	DESCRIPTION		
CT120	70040247	Cap, Ceramic, Chip	1nF	J 50V
CT121	70040730	Cap, Chip	100nF	M 25V
CT123	24783130	Cap, Chip	13pF	J 50V
CT125	70041328	Cap, Chip	100nF	Z 25V
CT126	70041328	Cap, Chip	100nF	Z 25V
CT128	70041596	Cap, Chip	10nF	K 50V
CT129	70040730	Cap, Chip	100nF	M 25V
CT131	70040989	Cap, Chip	10nF	K 50V
CT132	70040989	Cap, Chip	10nF	K 50V
CT133	70041713	Cap, Electrolytic	100µF	M 16V
CT134	70040730	Cap, Chip	100nF	M 25V
CT135	70040989	Cap, Chip	10nF	K 50V
CT137	24285102	Cap, Chip	1000pF	K 50V
CT138	24285102	Cap, Chip	1000pF	K 50V
CT139	24774070	Cap, Chip	7pF	D 50V
CT141	70041328	Cap, Chip	100nF	Z 25V
CT142	70040730	Cap, Chip	100nF	M 25V
CT145	70041111	Cap, Electrolytic	470µF	M 10V
CT146	70041023	Cap, Chip	22nF	M 50V
CT148	70041292	Cap, Electrolytic	100µF	M 6.3V
CT200	70040730	Cap, Chip	100nF	M 25V
CT201	24203470	Cap, Electrolytic	47µF	M 16V
CT202	70011764	Cap, Electrolytic	220µF	M 6.3V
CT203	70040730	Cap, Chip	100nF	M 25V
CT204	70040730	Cap, Chip	100nF	M 25V
CT213	70041328	Cap, Chip	100nF	Z 25V
CT215	70041328	Cap, Chip	100nF	Z 25V
CT305	70040980	Cap, Chip	100pF	J 50V
CT306	70040980	Cap, Chip	100pF	J 50V
CT311	70042256	Cap, Electrolytic	3300µF	M 6.3V
CT312	70041653	Cap, Ceramic	470pF	J 50V
CV001	70041298	Cap, Electrolytic	1µF	M 50V
CV005	70041871	Cap, Chip	200pF	J 50V
CV006	70041651	Cap, Chip	560pF	J 50V
CV007	24774820	Cap, Chip	82pF	J 50V
CV008	70041641	Cap, Electrolytic	10µF	M 50V
CV009	24774330	Cap, Chip	33pF	J 50V
CV011	70041141	Cap, Chip	22nF	M 25V
CV012	70041699	Cap, Chip	100nF	K
CV013	70041570	Cap, Electrolytic	100µF	M 10V
CV014	70042153	Cap, Electrolytic	22µF	M 16V
CV017	70041298	Cap, Electrolytic	1µF	M 50V
CV020	70040238	Cap, Ceramic, Chip	15pF	J 50V
CV021	70041698	Cap, Chip	18nF	K 50V
CV022	24774330	Cap, Chip	33pF	J 50V
CV023	70040730	Cap, Chip	100nF	M 25V
CV024	70041504	Cap, Electrolytic	470nF	M 50V
CV025	24815272	Cap, Chip	2700pF	K 50V
CV026	70041699	Cap, Chip	100nF	K
CV027	70041118	Cap, Chip	220pF	J 50V
CV028	70041328	Cap, Chip	100nF	Z 25V
CV029	70042250	Cap, Chip	180pF	J 50V
CV031	70041530	Cap, Chip	330nF	Z 16V
CV032	70041530	Cap, Chip	330nF	Z 16V
CV033	70041654	Cap, Chip	10nF	K 25V
CV034	70041298	Cap, Electrolytic	1µF	M 50V
CV035	70041328	Cap, Chip	100nF	Z 25V
CV036	70041008	Cap, Chip	33nF	Z 50V
CV039	70041570	Cap, Electrolytic	100µF	M 6.3V
CV041	70041328	Cap, Chip	100nF	Z 25V
CV043	70041530	Cap, Chip	330nF	Z 16V
CV044	70041188	Cap, Electrolytic	10µF	M 16V
CV045	70041505	Cap, Electrolytic	3.3µF	M 50V
CV046	70041641	Cap, Electrolytic	10µF	M 50V
CV047	24285103	Cap, Chip	0.01µF	K 50V
CV048	24783180	Cap, Chip	180pF	J 50V
CV050	70041316	Cap, Electrolytic	1µF	M 50V
CV051	70041654	Cap, Chip	10nF	K 25V
CV052	70041502	Cap, Electrolytic	4.7µF	M 16V
CV053	70042102	Cap, Electrolytic	4.7µF	M 35V
CV054	70041328	Cap, Chip	100nF	Z 25V
CV056	70041118	Cap, Chip	220pF	J 50V
CV057	70041570	Cap, Electrolytic	100µF	M 6.3V
CV058	24815102	Cap, Chip	1000pF	K 50V
CV060	24774101	Cap, Chip	100pF	J 50V

LOCATION NUMBER	PART NUMBER	DESCRIPTION		
CV070	70041328	Cap, Chip	100nF	Z 25V
CV080	70041654	Cap, Chip	10nF	K 25V
CV091	70041654	Cap, Chip	10nF	K 25V
CV094	70041644	Cap, Electrolytic	47µF	M 10V
CV097	70040243	Cap, Ceramic, Chip	82pF	J 50V
CV100	24815472	Cap, Chip	4700pF	K 50V
CV101	70041654	Cap, Chip	10nF	K 25V
CV102	70041328	Cap, Chip	100nF	Z 25V
CV106	70042066	Cap, Chip	560pF	J 50V
CV107	70041654	Cap, Chip	10nF	K 25V
CV108	70041529	Cap, Chip	1µF	Z 16V
CV109	24285103	Cap, Chip	0.01µF	K 50V
CV110	70041326	Cap, Chip	56pF	J 50V
CV112	24783330	Cap, Chip	33pF	J 50V
CV113	70041514	Cap, Electrolytic	100µF	M 16V
CV114	24774479	Cap, Chip	4.7pF	
CV115	70041654	Cap, Chip	10nF	K 25V
CV116	70041654	Cap, Chip	10nF	K 25V
CV117	70041654	Cap, Chip	10nF	K 25V
CV118	70041328	Cap, Chip	100nF	Z 25V
CV119	70041654	Cap, Chip	10nF	K 25V
CV121	70041653	Cap, Chip	470pF	J 50V
CV122	70041657	Cap, Chip	22nF	K 25V
CV130	24774100	Cap, Chip	10pF	D 50V
CV131	70041654	Cap, Chip	10nF	K 25V
CV133	70040261	Cap, Ceramic, Chip	68pF	J 50V
CV134	70041592	Cap, Chip	6pF	D 50V
CV137	70041328	Cap, Chip	100nF	Z 25V
CV138	70042112	Cap, Electrolytic	47µF	M 16V
CW001	70040530	Cap, Electrolytic	100µF	M 16V
CW005	24797100	Cap, Electrolytic	10µF	M 50V
CW006	70040738	Cap, Electrolytic	4.7µF	25V
CW007	70041533	Cap, Chip	47nF	K 50V
CZ003	70041500	Cap, Electrolytic	47µF	M 50V
CZ014	70041241	Cap, Electrolytic	47µF	M 16V
CZ015	70041500	Cap, Electrolytic	47µF	M 50V
CZ021	70041631	Cap, Chip	22nF	K 50V
CZ030	24794101	Cap, Electrolytic	100µF	M 16V
CZ033	24794101	Cap, Electrolytic	100µF	M 16V
PT101	24093962	Cap, Variable	20pF	
- RESISTORS -				
CV140	24872103	Res, Chip	10kΩ	J 1/16W
RG010	70041068	Res, Carbon	2.2kΩ	J
RG011	70040350	Res, Chip	220Ω	J 1/16W
RG012	70040350	Res, Chip	220Ω	J 1/16W
RS002	24871100	Res, Chip	10Ω	J 1/8W
RS003	70040362	Res, Chip	33kΩ	J 1/16W
RS004	24872221	Res, Chip	220Ω	J 1/16W
RS005	70040895	Res, Carbon	820Ω	J 1/4W
RS006	24872334	Res, Chip	330kΩ	J 1/16W
RS007	70040895	Res, Carbon	820Ω	J 1/4W
RS008	70040571	Res, Chip	12kΩ	J 1/16W
RS010	70041138	Res, Chip	5.6kΩ	J 1/10W
RS011	70041800	Res, Chip	4.3kΩ	J 1/10W
RS012	70040374	Res, Chip	8.2kΩ	J 1/16W
RS013	24872393	Res, Chip	39kΩ	J 1/16W
RS014	70041676	Res, Chip	2.2MΩ	K 1/10W
RS015	70040336	Res, Chip	68kΩ	J 1/16W
RS016	24871822	Res, Chip	8.2kΩ	J 1/8W
RS017	24872102	Res, Chip	1kΩ	J 1/16W
RS019	70011728	Res, Chip	20kΩ	J
RS021	70040786	Res, Carbon	33kΩ	J 1/4W
RS022	70040701	Res, Carbon	100Ω	J 1/4W
RS023	70041924	Res, Chip	430Ω	J 1/10W
RS025	24872221	Res, Chip	220Ω	J 1/16W
RS026	70041093	Chip Jumper		
RS029	24872473	Res, Chip	47kΩ	J 1/16W
RS030	70041176	Res, Chip	4.7Ω	J 1/16W
RS031	24872472	Res, Chip	4.7kΩ	J 1/16W
RS036	24871103	Res, Chip	10kΩ	J 1/8W
RS039	24871472	Res, Chip	4.7kΩ	J 1/8W
RS040	24872472	Res, Chip	4.7kΩ	J 1/16W
△RS041	70041671	Res, Fusible	18Ω	J 0.3W
RS042	70041096	Chip Jumper		
RS130	24872104	Res, Chip	100kΩ	J 1/16W

LOCATION NUMBER	PART NUMBER	DESCRIPTION			LOCATION NUMBER	PART NUMBER	DESCRIPTION		
RT016	24871472	Res, Chip	4. 7kΩ	J 1/8W	RT311	24871221	Res, Chip	220Ω	J 1/8W
RT017	24871821	Res, Chip	820Ω	J 1/8W	RT320	24872182	Res, Chip	1. 8kΩ	J 1/16W
RT024	24871103	Res, Chip	10kΩ	J 1/8W	RT321	24872182	Res, Chip	1. 8kΩ	J 1/16W
RT075	24872222	Res, Chip	2. 2kΩ	J 1/16W	RV001	70041613	Res, Chip	2MΩ	J 1/10W
RT100	24871201	Res, Chip	200Ω	J 1/8W	RV003	24872152	Res, Chip	1. 5kΩ	J 1/16W
RT101	24871201	Res, Chip	200Ω	J 1/8W	RV004	24871102	Res, Chip	1kΩ	J 1/8W
RT103	24872472	Res, Chip	4. 7kΩ	J 1/16W	RV005	24872512	Res, Chip	5. 1kΩ	J 1/16W
RT105	24872563	Res, Chip	56kΩ	J 1/16W	RV006	24872152	Res, Chip	1. 5kΩ	J 1/16W
RT106	24872182	Res, Chip	1. 8kΩ	J 1/16W	RV007	24872331	Res, Chip	330Ω	J 1/16W
RT107	24871182	Res, Chip	1. 8kΩ	J 1/8W	RV008	70040338	Res, Chip	680Ω	J 1/16W
RT108	24872563	Res, Chip	56kΩ	J 1/16W	RV009	24872103	Res, Chip	10kΩ	J 1/16W
RT109	24872471	Res, Chip	470Ω	J 1/16W	RV010	70040371	Res, Chip	2. 2kΩ	J 1/16W
RT110	70040370	Res, Chip	680kΩ	J 1/16W	RV014	24872101	Res, Chip	100Ω	J 1/16W
RT111	70041554	Res, Chip	4. 7MΩ	K 1/16W	RV021	24872222	Res, Chip	2. 2kΩ	J 1/16W
RT112	70041387	Res, Chip	220kΩ	J 1/10W	RV022	24872222	Res, Chip	2. 2kΩ	J 1/16W
RT113	70041554	Res, Chip	4. 7MΩ	K 1/16W	RV023	24872102	Res, Chip	1kΩ	J 1/16W
RT116	24872101	Res, Chip	100Ω	J 1/16W	RV026	70040362	Res, Chip	33kΩ	J 1/16W
RT117	70040891	Res, Carbon	470Ω	J 0. 2W	RV031	70041676	Res, Chip	2. 2MΩ	K 1/10W
RT124	24872821	Res, Chip	820Ω	J 1/16W	RV032	24872102	Res, Chip	1kΩ	J 1/16W
RT125	24871181	Res, Chip	180Ω	J 1/8W	RV036	70040375	Res, Chip	15MΩ	J 1/16W
RT126	24871562	Res, Chip	5. 6kΩ	J 1/8W	RV037	24872473	Res, Chip	47kΩ	J 1/16W
RT127	24871562	Res, Chip	5. 6kΩ	J 1/8W	RV038	24872472	Res, Chip	4. 7kΩ	J 1/16W
RT128	24871273	Res, Chip	27kΩ	J 1/8W	RV039	24872103	Res, Chip	10kΩ	J 1/16W
RT129	70040784	Res, Carbon	22kΩ	J 1/4W	RV040	24872473	Res, Chip	47kΩ	J 1/16W
RT130	24871472	Res, Chip	4. 7kΩ	J 1/8W	RV043	24872472	Res, Chip	4. 7kΩ	J 1/16W
RT131	24871221	Res, Chip	220Ω	J 1/8W	RV044	24872122	Res, Chip	1. 2kΩ	J 1/16W
RT132	24871229	Res, Chip	2. 2Ω	J 1/8W	RV045	24872105	Res, Chip	1MΩ	J 1/16W
RT133	24871229	Res, Chip	2. 2Ω	J 1/8W	RV046	24872105	Res, Chip	1MΩ	J 1/16W
RT134	24871114	Res, Chip	110kΩ	J 1/8W	RV048	24872105	Res, Chip	1MΩ	J 1/16W
△RT135	70041236	Res, Fusible	1Ω	J 0. 4W	RV050	24872681	Res, Chip	680Ω	J 1/16W
RT136	24871114	Res, Chip	110kΩ	J 1/8W	RV052	24872102	Res, Chip	1kΩ	J 1/16W
RT138	70040106	Res, Carbon	10kΩ	J 1/4W	RV053	70040846	Res, Carbon	820Ω	J 1/4W
RT139	70040852	Res, Carbon	10kΩ	J 1/4W	RV054	24872102	Res, Chip	1kΩ	J 1/16W
RT145	70040106	Res, Carbon	10kΩ	J 1/4W	RV055	24872102	Res, Chip	1kΩ	J 1/16W
RT147	24871912	Res, Chip	9. 1kΩ	J 1/8W	RV056	70040355	Res, Chip	1. 5kΩ	J 1/16W
RT148	24871102	Res, Chip	1kΩ	J 1/8W	RV057	70041093	Chip Jumper		
RT149	24871182	Res, Chip	1. 8kΩ	J 1/8W	RV060	24871102	Res, Chip	1kΩ	J 1/8W
RT150	24871472	Res, Chip	4. 7kΩ	J 1/8W	RV061	24872822	Res, Chip	8. 2kΩ	J 1/16W
RT151	24871472	Res, Chip	4. 7kΩ	J 1/8W	RV080	24872222	Res, Chip	2. 2kΩ	J 1/16W
RT152	24872472	Res, Chip	4. 7kΩ	J 1/16W	RV082	24872680	Res, Chip	68Ω	J 1/16W
RT153	24871102	Res, Chip	1kΩ	J 1/8W	RV083	24872823	Res, Chip	82kΩ	J 1/16W
RT155	24871473	Res, Chip	47kΩ	J 1/8W	RV092	24872681	Res, Chip	680Ω	J 1/16W
RT156	24871473	Res, Chip	47kΩ	J 1/8W	RV093	24872222	Res, Chip	2. 2kΩ	J 1/16W
RT159	24871222	Res, Chip	2. 2kΩ	J 1/8W	RV094	24872681	Res, Chip	680Ω	J 1/16W
RT160	24872102	Res, Chip	1kΩ	J 1/16W	RV095	24872101	Res, Chip	100Ω	J 1/16W
RT162	24871103	Res, Chip	10kΩ	J 1/8W	RV096	24872102	Res, Chip	1kΩ	J 1/16W
RT163	70041659	Res, Carbon	220Ω	J 1/4W	RV099	24871152	Res, Chip	1. 5kΩ	J 1/8W
RT164	24871103	Res, Chip	10kΩ	J 1/8W	RV100	70040339	Res, Chip	330Ω	J 1/16W
RT165	70041093	Chip Jumper			RV101	24872821	Res, Chip	820Ω	J 1/16W
RT166	70041659	Res, Carbon	220Ω	J 1/4W	RV102	24872183	Res, Chip	18kΩ	J 1/16W
RT167	24872103	Res, Chip	10kΩ	J 1/16W	RV103	24872103	Res, Chip	10kΩ	J 1/16W
RT168	24872473	Res, Chip	47kΩ	J 1/16W	RV104	24872181	Res, Chip	180Ω	J 1/16W
RT169	70041879	Res, Chip	30kΩ	J 1/10W	RV106	24872471	Res, Chip	470Ω	J 1/16W
RT170	24871181	Res, Chip	180Ω	J 1/8W	RV107	24872102	Res, Chip	1kΩ	J 1/16W
RT171	24871151	Res, Chip	150Ω	J 1/8W	RV109	24872683	Res, Chip	68kΩ	J 1/16W
RT176	24871103	Res, Chip	10kΩ	J 1/8W	RV116	24872102	Res, Chip	1kΩ	J 1/16W
RT177	70040371	Res, Chip	2. 2kΩ	J 1/16W	RV118	24872182	Res, Chip	1. 8kΩ	J 1/16W
RT178	70040371	Res, Chip	2. 2kΩ	J 1/16W	RV119	24872124	Res, Chip	120kΩ	J 1/16W
RT179	70041677	Res, Chip	2. 2kΩ	G 1/10W	RV120	24871104	Res, Chip	100kΩ	J 1/8W
RT180	70041677	Res, Chip	2. 2kΩ	G 1/10W	RV121	70040686	Res, Chip	1. 5kΩ	J 1/8W
RT181	24871103	Res, Chip	10kΩ	J 1/8W	RV124	70040849	Res, Carbon	2. 2kΩ	J
RT182	70041675	Res, Chip	16kΩ	J 1/8W	RV128	70041176	Res, Chip	4. 7Ω	J 1/16W
RT183	70040371	Res, Chip	2. 2kΩ	J 1/16W	RV129	24872681	Res, Chip	680Ω	J 1/16W
RT200	24871222	Res, Chip	2. 2kΩ	J 1/8W	RV130	70040844	Res, Carbon	1kΩ	J 1/4W
RT201	24871222	Res, Chip	2. 2kΩ	J 1/8W	RV132	24872102	Res, Chip	1kΩ	J 1/16W
RT202	24871222	Res, Chip	2. 2kΩ	J 1/8W	RV133	70040373	Res, Chip	4. 7kΩ	J 1/16W
RT203	70040103	Res, Carbon	1kΩ	J 1/4W	RV134	70040132	Res, Chip	22kΩ	J 1/8W
RT215	70040371	Res, Chip	2. 2kΩ	J 1/16W	RV135	70040135	Res, Chip	12kΩ	J 1/8W
RT300	70041096	Chip Jumper			RV136	24872563	Res, Chip	56kΩ	J 1/16W
RT301	70041096	Chip Jumper			RV137	70040366	Res, Chip	82kΩ	J 1/16W
RT302	70041096	Chip Jumper			RV138	70040367	Res, Chip	120kΩ	J 1/16W
RT303	70041096	Chip Jumper			RV139	70041173	Res, Chip	100kΩ	J 1/10W
RT304	70041096	Chip Jumper			RV150	24872222	Res, Chip	2. 2kΩ	J 1/16W
RT305	24871221	Res, Chip	220Ω	J 1/8W	RW001	70040118	Res, Carbon	4. 7kΩ	J 1/4W
RT306	24872221	Res, Chip	220Ω	J 1/16W	RW002	24872122	Res, Chip	1. 2kΩ	J 1/16W

LOCATION NUMBER	PART NUMBER	DESCRIPTION		
RW005	24871223	Res, Chip	22k Ω	J 1/8W
RW006	24872472	Res, Chip	4.7k Ω	J 1/16W
RW008	24871103	Res, Chip	10k Ω	J 1/8W
RW009	24871103	Res, Chip	10k Ω	J 1/8W
RW010	24871103	Res, Chip	10k Ω	J 1/8W
RW011	24871103	Res, Chip	10k Ω	J 1/8W
Δ RW012	70041074	Res, Fusible	27 Ω	J 0.3W
RW019	24871152	Res, Chip	1.5k Ω	J 1/8W
RW020	24871152	Res, Chip	1.5k Ω	J 1/8W
Δ RW021	70040126	Res, Fusible	3.9 Ω	
RW024	70040703	Res, Carbon	27k Ω	J 1/4W
RW025	70041137	Res, Chip	3.9k Ω	J 1/10W
RW027	24871339	Res, Chip	3.3 Ω	J 1/8W
RW028	24871339	Res, Chip	3.3 Ω	J 1/8W
RW029	24871339	Res, Chip	3.3 Ω	J 1/8W
RW030	24871332	Res, Chip	3.3k Ω	J 1/8W
RZ015	70040103	Res, Carbon	1k Ω	J 1/4W
RZ030	24872911	Res, Chip	910 Ω	J 1/16W
RZ031	24872102	Res, Chip	1k Ω	J 1/16W
RZ035	70041096	Chip Jumper		
RZ037	70040355	Res, Chip	1.5k Ω	J 1/16W
RZ050	24872681	Res, Chip	680 Ω	J 1/16W
RZ051	70041945	Res, Chip	130 Ω	J 1/10W
RZ052	24872471	Res, Chip	470 Ω	J 1/16W
RZ053	24872471	Res, Chip	470 Ω	J 1/16W
RZ054	70040103	Res, Carbon	1k Ω	J 1/4W
RZ055	24872102	Res, Chip	1k Ω	J 1/16W
RZ056	70041096	Chip Jumper		
RZ060	24871270	Res, Chip	27 Ω	J 1/8W
RZ065	70041660	Res, Carbon	100 Ω	J 0.43W
RZ066	70042251	Res, Carbon	390 Ω	J 1/4W
PS034	24066742	Res, Variable	10k Ω	
JS007	70041093	Chip Jumper		
JS009	70041096	Chip Jumper		
JS012	70041093	Chip Jumper		
JS017	70041093	Chip Jumper		
JS019	70041093	Chip Jumper		
JS020	70041093	Chip Jumper		
JS021	70041093	Chip Jumper		
JS026	70041093	Chip Jumper		
JS027	70041096	Chip Jumper		
JS037	70041093	Chip Jumper		
JS039	70041093	Chip Jumper		
JS042	70041096	Chip Jumper		
JS051	70041093	Chip Jumper		
JS122	70041093	Chip Jumper		
JS123	70041093	Chip Jumper		
JS125	70041096	Chip Jumper		
JT004	70041093	Chip Jumper		
JT006	70041093	Chip Jumper		
JT009	70041096	Chip Jumper		
JT010	70012552	Coil, Peaking		
JT018	70041093	Chip Jumper		
JT032	70041093	Chip Jumper		
JT040	70012552	Coil, Peaking		
JT044	70041093	Chip Jumper		
JT083	70041093	Chip Jumper		
JT094	70040701	Res, Carbon	100 Ω	J 1/4W
JT099	70041093	Chip Jumper		
JT111	70041093	Chip Jumper		
JT115	70041093	Chip Jumper		
JT127	70041093	Chip Jumper		
JT129	70041093	Chip Jumper		
JT130	70041093	Chip Jumper		
JT155	70041093	Chip Jumper		
JT156	70041093	Chip Jumper		
JT164	70041093	Chip Jumper		
JT182	70041093	Chip Jumper		
JT183	70041093	Chip Jumper		
JT185	70041093	Chip Jumper		
JT192	70041093	Chip Jumper		
JT206	70041093	Chip Jumper		
JT207	70041093	Chip Jumper		
JT214	70041093	Chip Jumper		
JT302	70041096	Chip Jumper		

For Service Manuals Contact
MAURITRON TECHNICAL SERVICES
 8 Cherry Tree Rd, Chinnor
 Oxon OX9 4QY
 Tel:- 01844-351694 Fax:- 01844-352554
 Email:- enquiries@mauritron.co.uk

LOCATION NUMBER	PART NUMBER	DESCRIPTION		
JT303	70041096	Chip Jumper		
JT304	70041096	Chip Jumper		
JT305	70041096	Chip Jumper		
JT314	70041093	Chip Jumper		
JT322	70041096	Chip Jumper		
JT324	70041093	Chip Jumper		
JV010	70041096	Chip Jumper		
JV011	70041096	Chip Jumper		
JV012	70041096	Chip Jumper		
JV016	70041093	Chip Jumper		
JV019	70041096	Chip Jumper		
JV020	70041093	Chip Jumper		
JV024	70041096	Chip Jumper		
JV026	70041096	Chip Jumper		
JV027	70041093	Chip Jumper		
JV029	70041093	Chip Jumper		
JV032	70041093	Chip Jumper		
JV033	70041096	Chip Jumper		
JV034	70041093	Chip Jumper		
JV035	70041096	Chip Jumper		
JV037	70041093	Chip Jumper		
JV038	70041096	Chip Jumper		
JV040	70041096	Chip Jumper		
JV043	70041093	Chip Jumper		
JV045	70041096	Chip Jumper		
JV046	70041096	Chip Jumper		
JV053	70041093	Chip Jumper		
JV054	70041096	Chip Jumper		
JV056	70041093	Chip Jumper		
JV059	70041096	Chip Jumper		
JV061	70041096	Chip Jumper		
JV062	70041093	Chip Jumper		
JV063	70041096	Chip Jumper		
JV064	70041093	Chip Jumper		
JV065	70041093	Chip Jumper		
JV066	70041093	Chip Jumper		
JV067	70041093	Chip Jumper		
JV069	70041096	Chip Jumper		
JV073	70041093	Chip Jumper		
JV074	70041096	Chip Jumper		
JV075	70041093	Chip Jumper		
JV078	70041093	Chip Jumper		
JV082	70041093	Chip Jumper		
JV083	70041093	Chip Jumper		
JV086	70041093	Chip Jumper		
JV091	70041093	Chip Jumper		
JV101	70041096	Chip Jumper		
JV102	70041096	Chip Jumper		
JV103	70041096	Chip Jumper		
JV104	70041093	Chip Jumper		
JV105	70041093	Chip Jumper		
JV106	70041096	Chip Jumper		
JV108	70041093	Chip Jumper		
JV109	70041096	Chip Jumper		
JV111	70041096	Chip Jumper		
JV112	70041096	Chip Jumper		
JV113	70041096	Chip Jumper		
JV115	70041096	Chip Jumper		
JV120	70041096	Chip Jumper		
JV130	70041093	Chip Jumper		
JV151	70041096	Chip Jumper		
JV162	70041093	Chip Jumper		
JV204	70041093	Chip Jumper		
JW004	70041096	Chip Jumper		
JW006	70041093	Chip Jumper		
JW009	70041093	Chip Jumper		
JW016	70041093	Chip Jumper		
JW017	70041093	Chip Jumper		
JW030	70041096	Chip Jumper		
JZ003	70041093	Chip Jumper		
JZ012	70041093	Chip Jumper		
JZ029	70041093	Chip Jumper		
JZ040	70041093	Chip Jumper		
JZ042	70041096	Chip Jumper		
JZ045	70041093	Chip Jumper		

LOCATION NUMBER	PART NUMBER	DESCRIPTION			
JZ069	70041093	Chip Jumper			
JZ101	70041093	Chip Jumper			
		- MISCELLANEOUS -			
0010M	70012627	Tuner	FE5231		
0020M	70012022	IF Module			
BT006	70011830	Connector			
FZ051	70011260	Filter			
GT101	70011793	Photo Interrupter	GP1S562		
GT102	70011793	Photo Interrupter	GP1S562		
GT105	70011828	Hall Sensor	HW300B		
GT10A	70051136	LED Holder			
MT001	70031317	Stator			
QT100	70010116	Crystal, 32kHz			
QT101	70012167	Crystal	16MHz		
QT102	70012188	Crystal	17.734MHz		
QV018	70011960	Crystal	4.433619MHz		
ST002	70011826	Switch, Push			
■0030M	70095067	P C Board Assy	Terminal		
		- INTEGRATED CIRCUITS -			
IX001	70011881	IC	STV6400		
IX020	70011975	IC	MC14052/BCP		
IX040	70119727	IC	MC14053BCP		
IY001	70012403	IC	SDA5649		
		- TRANSISTORS -			
TG030	23114454	Transistor	DTC144E		
TX002	70010134	Transistor	BC548B		
		- DIODES -			
DG020	70010153	Diode	1N4148		
DG034	70010153	Diode	1N4148		
		- COILS -			
LX001	70010642	Coil, Peaking			
LX002	70011954	Coil, Peaking			
LY001	70011953	Coil, Peaking			
		- CAPACITORS -			
CX001	24203470	Cap, Electrolytic	47μF	M 16V	
CX002	70040052	Cap, Plastic	100nF	M 63V	
CX003	70040052	Cap, Plastic	100nF	M 63V	
CX004	70040052	Cap, Plastic	100nF	M 63V	
CX005	70040052	Cap, Plastic	100nF	M 63V	
CX008	70040052	Cap, Plastic	100nF	M 63V	
CX009	70041051	Cap, Electrolytic	47μF	M 16V	
CX010	70040052	Cap, Plastic	100nF	M 63V	
CX016	24203470	Cap, Electrolytic	47μF	M 16V	
CX017	70040052	Cap, Plastic	100nF	M 63V	
CX018	70042126	Cap, Ceramic	10nF	M 16V	
CX023	24436271	Cap, Ceramic	270pF	J 50V	
CX050	70040738	Cap, Electrolytic	4.7μF	25V	
CX051	24633220	Cap, Electrolytic	22μF	M 16V	
CX055	24203470	Cap, Electrolytic	47μF	M 16V	
CX056	70040052	Cap, Plastic	100nF	M 63V	
CX057	70040500	Cap, Plastic	8.2nF	J 63V	
CX061	70040300	Cap, Ceramic	1nF	K 50V	
CX070	24206479	Cap, Electrolytic	4.7μF	M 50V	
CX071	70040530	Cap, Electrolytic	100μF	M 16V	
CX072	24630852	Cap, Electrolytic	22μF	M 16V	
CX073	70040500	Cap, Plastic	8.2nF	J 63V	
CX091	70040300	Cap, Ceramic	1nF	K 50V	
CY001	70041943	Cap, Chip	150pF	K 50V	
CY002	70041109	Cap, Plastic	330nF	K 50V	
CY003	70041187	Cap, Plastic	33nF	K 100V	
CY004	70040045	Cap, Plastic	47nF	K 63V	
CY005	24203470	Cap, Electrolytic	47μF	M 16V	
CY010	70041920	Cap, Chip	2200pF	K 50V	
		- RESISTORS -			
RG020	70040963	Res, Carbon	8.2kΩ	J 1/4W	
RG021	70041665	Res, Carbon	5.6kΩ	J 1/4W	
RG030	70040844	Res, Carbon	1kΩ	J 1/4W	
RG031	70040852	Res, Carbon	10kΩ	J 1/4W	
RG032	70040846	Res, Carbon	820Ω	J 1/4W	
RG034	70040963	Res, Carbon	8.2kΩ	J 1/4W	
RG035	70041665	Res, Carbon	5.6kΩ	J 1/4W	
RG057	70040845	Res, Carbon	680Ω	J 1/4W	
RX002	70040842	Res, Carbon	470Ω	J	
RX021	70040844	Res, Carbon	1kΩ	J 1/4W	

LOCATION NUMBER	PART NUMBER	DESCRIPTION			
RX023	70040963	Res, Carbon	8.2kΩ	J 1/4W	
RX024	70040852	Res, Carbon	10kΩ	J 1/4W	
RX025	70040848	Res, Carbon	100kΩ	J	
RX033	70040848	Res, Carbon	100kΩ	J	
RX050	70041666	Res, Carbon	470kΩ	J 1/4W	
RX051	70041664	Res, Carbon	220kΩ	J 1/4W	
RX053	70040844	Res, Carbon	1kΩ	J 1/4W	
RX054	70040848	Res, Carbon	100kΩ	J	
RX060	70041665	Res, Carbon	5.6kΩ	J 1/4W	
RX061	70041665	Res, Carbon	5.6kΩ	J 1/4W	
RX070	70041664	Res, Carbon	220kΩ	J 1/4W	
RX071	70041666	Res, Carbon	470kΩ	J 1/4W	
RX072	70040844	Res, Carbon	1kΩ	J 1/4W	
RX073	70040845	Res, Carbon	680Ω	J 1/4W	
RX080	70041663	Res, Carbon	75Ω	J 1/4W	
RX081	70040838	Res, Carbon	68Ω	J 1/4W	
RX089	70040845	Res, Carbon	680Ω	J 1/4W	
RX090	70041665	Res, Carbon	5.6kΩ	J 1/4W	
RX091	70041665	Res, Carbon	5.6kΩ	J 1/4W	
RX092	70041663	Res, Carbon	75Ω	J 1/4W	
RX093	70040838	Res, Carbon	68Ω	J 1/4W	
RX094	70040848	Res, Carbon	100kΩ	J	
RX095	70040848	Res, Carbon	100kΩ	J	
RX096	70040848	Res, Carbon	100kΩ	J	
RX097	70040845	Res, Carbon	680Ω	J 1/4W	
RX212	70041667	Res, Carbon	12kΩ	J 1/4W	
RX213	70040811	Res, Carbon	3.3kΩ	J	
RY001	70040849	Res, Carbon	2.2kΩ	J	
RY002	70041668	Res, Carbon	1MΩ	J 1/4W	
RY003	70041669	Res, Carbon	1.2MΩ	J 0.14W	
RY004	70040851	Res, Carbon	6.8kΩ	J	
RY006	70040848	Res, Carbon	100kΩ	J	
RY009	70040851	Res, Carbon	6.8kΩ	J	
RY010	70041669	Res, Carbon	1.2MΩ	J 0.14W	
0110	70095117	Power Assy			
■0150M		P C Board Assy	Power		
		- INTEGRATED CIRCUITS -			
IP001	70011972	IC	U4614B		
IP002	70011699	IC	LM393N		
		- TRANSISTORS -			
TP001	70011962	Transistor, Chip	BUL310XI		
TP091	70011386	Transistor	2SA1020-Y		
		- DIODES -			
DP001	70012286	Diode	1N4007		
DP002	70012286	Diode	1N4007		
DP003	70012286	Diode	1N4007		
DP004	70012286	Diode	1N4007		
DP007	70012469	Diode	BA157		
DP008	70010817	Diode	1N4148		
DP009	70010817	Diode	1N4148		
DP041	70012469	Diode	BA157		
DP051	70012434	Diode	BAV20		
DP052	70012434	Diode	BAV20		
DP061	70011965	Diode	BA157		
DP071	70012434	Diode	BAV20		
DP080	70010417	Diode	1N5822		
DP090	70011964	Diode	FUF5404		
DP093	70010817	Diode	1N4148		
DP094	70011286	Diode, Zener	ZPD5.6		
DP095	70010955	Diode	MUR115		
		- COILS -			
LP051	70010922	Coil, Peaking			
LP071	23238916	Coil, Peaking	TRF4330AC		
LP081	70011955	Coil, Peaking			
LP091	70011952	Coil, Peaking			
		- CAPACITORS -			
ΔCP001	70040056	Cap, Plastic	100nF	M 275V	
ΔCP002	70041047	Cap, Electrolytic	47μF	M 385V	
ΔCP003	70041646	Cap, Ceramic	2.2nF	M 400V	
CP004	70041370	Cap, Ceramic	100pF	K 1kV	
CP005	24774100	Cap, Chip	10pF	D 50V	
CP006	70041656	Cap, Chip	4.7nF	M 50V	
CP007	24797100	Cap, Electrolytic	10μF	M 50V	
CP008	70040725	Cap, Electrolytic	100μF	M 25V	

LOCATION NUMBER	PART NUMBER	DESCRIPTION		
CP009	70041532	Cap, Chip	330pF	J 50V
CP015	70041653	Cap, Chip	470pF	J 50V
CP020	70041532	Cap, Chip	330pF	J 50V
CP041	70040412	Cap, Electrolytic	220 μ F	M 10V
CP051	24636010	Cap, Electrolytic	1 μ F	M 50V
CP054	24797100	Cap, Electrolytic	10 μ F	M 50V
CP055	70040096	Cap, Ceramic	470pF	M 400V
CP056	70041633	Cap, Plastic	10nF	K 100V
CP061	70041638	Cap, Electrolytic	470 μ F	M 25V
CP071	70040772	Cap, Electrolytic	47 μ F	M 50V
CP072	70041562	Cap, Chip	100nF	Z 50V
CP073	70040096	Cap, Ceramic	470pF	M 400V
CP081	70041637	Cap, Electrolytic	1000 μ F	M 16V
CP082	70040772	Cap, Electrolytic	47 μ F	M 50V
CP092	70041638	Cap, Electrolytic	470 μ F	M 25V
CP093	70040772	Cap, Electrolytic	47 μ F	M 50V
CP094	70041328	Cap, Chip	100nF	Z 25V
CP095	70040980	Cap, Chip	100pF	J 50V
- RESISTORS -				
RP001	24872103	Res, Chip	10k Ω	J 1/16W
RP002	24871153	Res, Chip	15k Ω	J 1/8W
RP003	24872823	Res, Chip	82k Ω	J 1/16W
RP004	24872223	Res, Chip	22k Ω	J 1/16W
RP005	24872223	Res, Chip	22k Ω	J 1/16W
RP006	24872223	Res, Chip	22k Ω	J 1/16W
RP007	24872223	Res, Chip	22k Ω	J 1/16W
RP008	24872473	Res, Chip	47k Ω	J 1/16W
RP009	24872104	Res, Chip	100k Ω	J 1/16W
RP010	24871153	Res, Chip	15k Ω	J 1/8W
RP011	24871153	Res, Chip	15k Ω	J 1/8W
RP012	24871153	Res, Chip	15k Ω	J 1/8W
RP013	70041917	Res, Chip	6.8k Ω	F 1/10W
RP014	24872222	Res, Chip	2.2k Ω	J 1/16W
RP015	70041678	Res, Chip	3.9 Ω	K
RP016	24872330	Res, Chip	33 Ω	J 1/16W
RP017	24871100	Res, Chip	10 Ω	J 1/8W
△RP018	70041078	Res, Fusible	1.5 Ω	J 0.3W
RP019	24871182	Res, Chip	1.8k Ω	J 1/8W
RP020	24872270	Res, Chip	27 Ω	J 1/16W
△RP021	70041673	Res, Fusible	2.2k Ω	J 0.3W
RP022	24872104	Res, Chip	100k Ω	J 1/16W
RP023	24871334	Res, Chip	330k Ω	J 1/8W
RP024	24871334	Res, Chip	330k Ω	J 1/8W
RP025	24871334	Res, Chip	330k Ω	J 1/8W
RP026	24872473	Res, Chip	47k Ω	J 1/16W
RP027	24871153	Res, Chip	15k Ω	J 1/8W
RP028	24871153	Res, Chip	15k Ω	J 1/8W
RP031	24872393	Res, Chip	39k Ω	J 1/16W
RP032	24872752	Res, Chip	7.5k Ω	J 1/16W
△RP041	70041081	Res, Fusible	0.1 Ω	F 0.4W
△RP042	70040456	Res, Fusible	10 Ω	J
△RP051	70041116	Res, Fusible	39 Ω	J 0.3W
RP052	24871102	Res, Chip	1k Ω	J 1/8W
RP053	24872473	Res, Chip	47k Ω	J 1/16W
RP054	24872822	Res, Chip	8.2k Ω	J 1/16W
RP057	24872333	Res, Chip	33k Ω	J 1/16W
RP061	24871682	Res, Chip	6.8k Ω	J 1/8W
RP062	24871682	Res, Chip	6.8k Ω	J 1/8W
RP063	24871682	Res, Chip	6.8k Ω	J 1/8W
△RP071	70040125	Res, Carbon	47 Ω	J 0.3W
RP072	24871153	Res, Chip	15k Ω	J 1/8W
RP089	24872152	Res, Chip	1.5k Ω	J 1/16W
△RP091	70041081	Res, Fusible	0.1 Ω	F 0.4W
△RP092	70041670	Res, Fusible	120 Ω	J 0.3W
RP093	24872682	Res, Chip	6.8k Ω	J 1/16W
RP094	70040895	Res, Carbon	820 Ω	J 1/4W
RP095	24872393	Res, Chip	39k Ω	J 1/16W
RP096	70041880	Res, Chip	1k Ω	F 1/10W
RP097	70041679	Res, Chip	1.5k Ω	F 1/10W
JP001	70041093	Chip Jumper		
JP010	70041093	Chip Jumper		
JP011	70041093	Chip Jumper		
- MISCELLANEOUS -				
△BP001	70011176	Inlet		
△FP001	70010445	Fuse, 1A, 250V		

LOCATION NUMBER	PART NUMBER	DESCRIPTION		
FP01A	70010597	Fuse Holder		
△LP001	70011950	Line Filter		
△LP002	70011949	Line Filter		
△LP020	70011948	Power Transformer		
0209	70095059	KDB/FCB Assy		
■0210M		P C Board Assy	KDB	
- INTEGRATED CIRCUITS -				
IK01	70012623	IC	TMP87CM70AF-6413	
- TRANSISTORS -				
TK04	A6004010	Transistor, Chip	RN1401	
TK05	A6325549	Transistor	2SC2236-Y	
- DIODES -				
DK01	70011969	Diode, Zener	ZMM5.6V	
DK11	70011582	Diode, LED	SE303AC-YD	
DK12	70011582	Diode, LED	SE303AC-YD	
DK13	70011582	Diode, LED	SE303AC-YD	
- CAPACITORS -				
CK01	70041690	Cap, Chip	30pF	J 50V
CK02	70041690	Cap, Chip	30pF	J 50V
CK03	70041376	Cap, Chip	10nF	Z 50V
CK04	70041376	Cap, Chip	10nF	Z 50V
CK05	70041376	Cap, Chip	10nF	Z 50V
CK06	70041376	Cap, Chip	10nF	Z 50V
CK07	24814223	Cap, Chip	2200pF	Z 50V
CK09	70040243	Cap, Ceramic, Chip	82pF	J 50V
CK22	70040647	Cap, Electrolytic	47 μ F	M 10V
CK23	70041292	Cap, Electrolytic	100 μ F	M 6.3V
- RESISTORS -				
RK01	70040350	Res, Chip	220 Ω	J 1/16W
RK02	70040350	Res, Chip	220 Ω	J 1/16W
RK03	70040350	Res, Chip	220 Ω	J 1/16W
RK04	70040350	Res, Chip	220 Ω	J 1/16W
RK05	70040373	Res, Chip	4.7k Ω	J 1/16W
RK101	70040391	Chip Jumper		
RK28	70040373	Res, Chip	4.7k Ω	J 1/16W
RK29	70041709	Res, Chip	2.2k Ω	G 1/10W
RK30	70040358	Res, Chip	10k Ω	J 1/16W
RK32	70040337	Res, Chip	270 Ω	J 1/16W
RK33	70040340	Res, Chip	47 Ω	J 1/16W
RK34	70041168	Res, Chip	15 Ω	J 1/10W
RK35	70041168	Res, Chip	15 Ω	J 1/10W
RK36	70041138	Res, Chip	5.6k Ω	J 1/10W
RK38	70041618	Res, Oxide Mental	3.3 Ω	J 1W
RK40	70040373	Res, Chip	4.7k Ω	J 1/16W
RK41	70041171	Res, Chip	1.2k Ω	J 1/10W
RK44	70011425	Res, Chip	3k Ω	
RK45	70011425	Res, Chip	3k Ω	
RK46	70011425	Res, Chip	3k Ω	
RK47	70011425	Res, Chip	3k Ω	
RK48	70011425	Res, Chip	3k Ω	
RK51	70040354	Res, Chip	1k Ω	J 1/16W
RK53	70040354	Res, Chip	1k Ω	J 1/16W
RK56	70011426	Res, Chip	2k Ω	
RK61	70041389	Res, Chip	6.2k Ω	J 1/10W
RK75	70041712	Res, Chip	9.1k Ω	J 1/10W
- MISCELLANEOUS -				
GK01	70012522	FIP	6-MT-255GNAK	
QK01	70010937	Resonator	8MHz	
SK01	23344094	Push Switch		
SK02	23344094	Push Switch		
SK05	23344094	Push Switch		
SK06	23344094	Push Switch		
SK07	23344094	Push Switch		
SK08	23344094	Push Switch		
SK09	23344094	Push Switch		
ZK01	70012418	F.U.	GP1U281X	
■0212M		P C Board Assy	FCB	
- RESISTORS -				
RK52	70040354	Res, Chip	1k Ω	J 1/16W
RK73	70040374	Res, Chip	8.2k Ω	J 1/16W
- MISCELLANEOUS -				
BK01B	23164505	Plug, 3P		
SK03	23344094	Push Switch		

LOCATION NUMBER	PART NUMBER	DESCRIPTION
--------------------	----------------	-------------

SK04	23344094	Push Switch
------	----------	-------------

LOCATION NUMBER	PART NUMBER	DESCRIPTION
--------------------	----------------	-------------

For Service Manuals Contact
MAURITRON TECHNICAL SERVICES
8 Cherry Tree Rd, Chinnor
Oxon OX9 4QY
Tel:- 01844-351694 Fax:- 01844-352554
Email:- enquiries@mauritron.co.uk

For Service Manuals Contact
MAURITRON TECHNICAL SERVICES
8 Cherry Tree Rd, Chinnor
Oxon OX9 4QY
Tel:- 01844-351694 Fax:- 01844-352554
Email:- enquiries@mauritron.co.uk

This page is not printed.

SPECIFICATIONS

SYSTEM

Format	: VHS standard
Recording system	: Rotary, 2-head helical scan system
Video heads	: 4 heads
Video signal system	: CCIR; 625 lines, 50 fields, PAL colour signal, NTSC colour, 525 lines
Tape speed	: SP : 23.39 mm/s (PAL) SP : 33.35 mm/s (NTSC) LP : 11.70 mm/s (PAL) SLP : 11.12 mm/s (NTSC)
Recording time	: SP : 240 minutes with E240 cassettes (PAL), LP : 480 minutes with E240 cassettes (PAL)
Winding time	: Approx. 110 seconds with E180 cassettes
Dimensions	: 370 (W) × 89 (H) × 307 (D) mm
Mass	: 4.0 kg
Operating temperature	: +5 to +40°C
Operating humidity	: Less than 80% RH
Mains power	: 230/240 V AC, 50 Hz
Power consumption	: 21 W (in operation)

CONNECTORS

Aerial input	: 75 Ω coaxial
Aerial output	: 75 Ω coaxial
Video input	: AUDIO/VIDEO SCART socket, 1.0 V(p-p), 75 Ω
Audio input	: AUDIO/VIDEO SCART socket, 308 mV(rms), more than 10 k Ω
Video output	: AUDIO/VIDEO SCART socket, 1.0 V(p-p), 75 Ω
Audio output	: AUDIO/VIDEO SCART socket, 308 mV(rms), less than 1.0 k Ω

VIDEO

Signal-to-noise ratio	: More than 43 dB (SP tape speed/PAL)
-----------------------	---------------------------------------

AUDIO

Signal-to-noise ratio	: More than 42 dB (SP tape speed/PAL/normal mono)
Frequency range	: 80 Hz to 10,000 Hz

TIMER

Clock	: 24-hour digital indication
No. of events	: 6 events 1 month

TUNER

System	: Frequency synthesizer
Channel coverage	: PAL I VHF: A – J, UHF: E21 – E69 CATV: 1 – 53, S01 – S41
RF converter	: UHF channel 60 (50 – 67, adjustable), System-I

Designs and specifications are subject to change without notice.

For Service Manuals Contact
MAURITRON TECHNICAL SERVICES
8 Cherry Tree Rd, Chinnor
Oxon OX9 4QY
Tel:- 01844-351694 Fax:- 01844-352554
Email:- enquiries@mauritron.co.uk